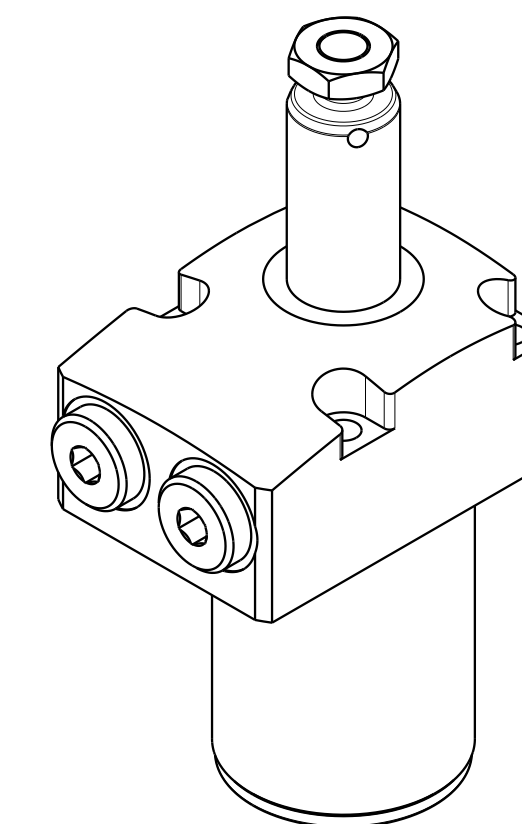
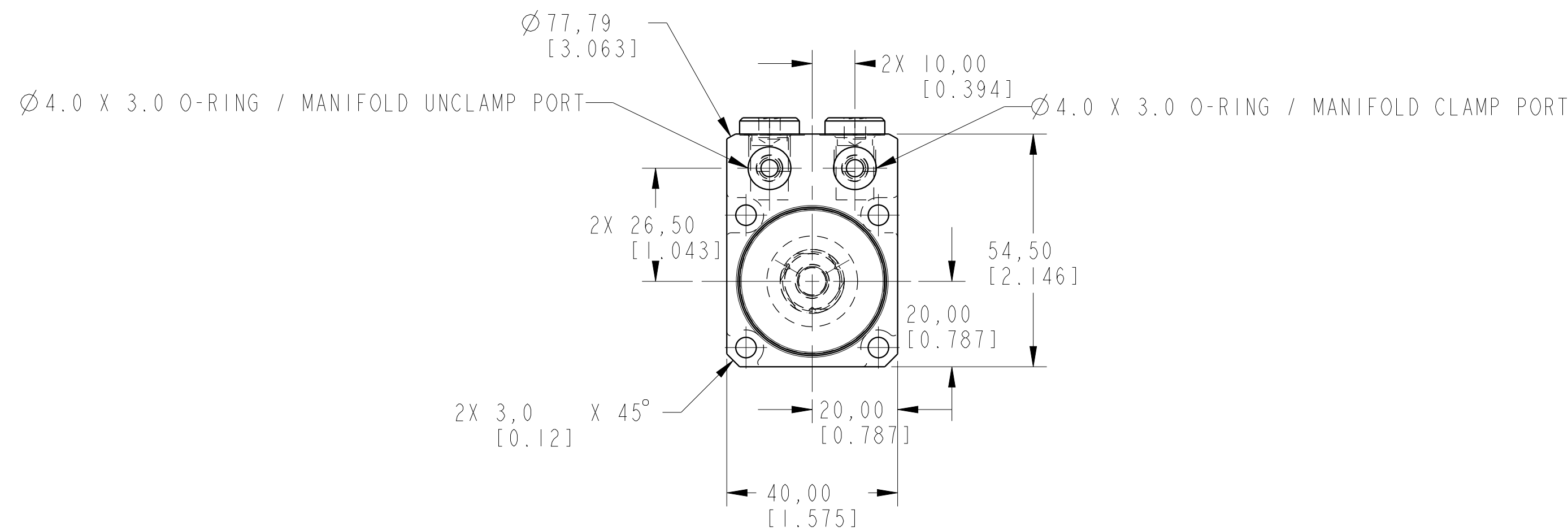


1

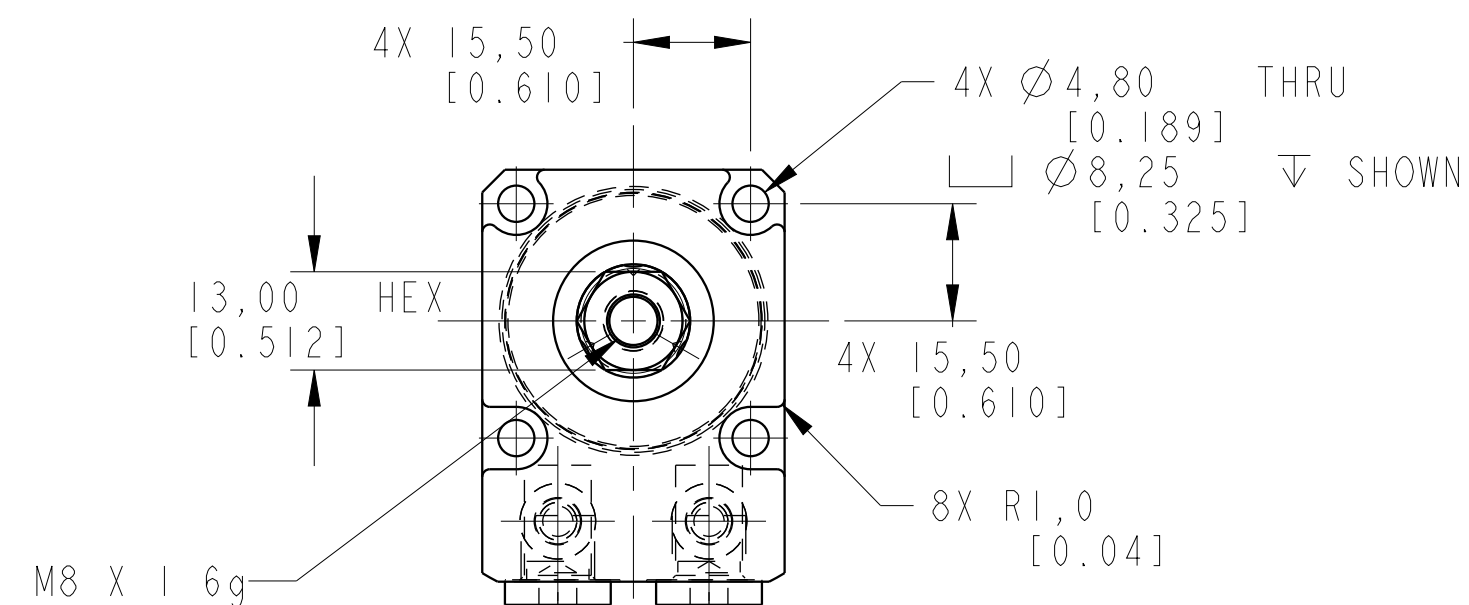
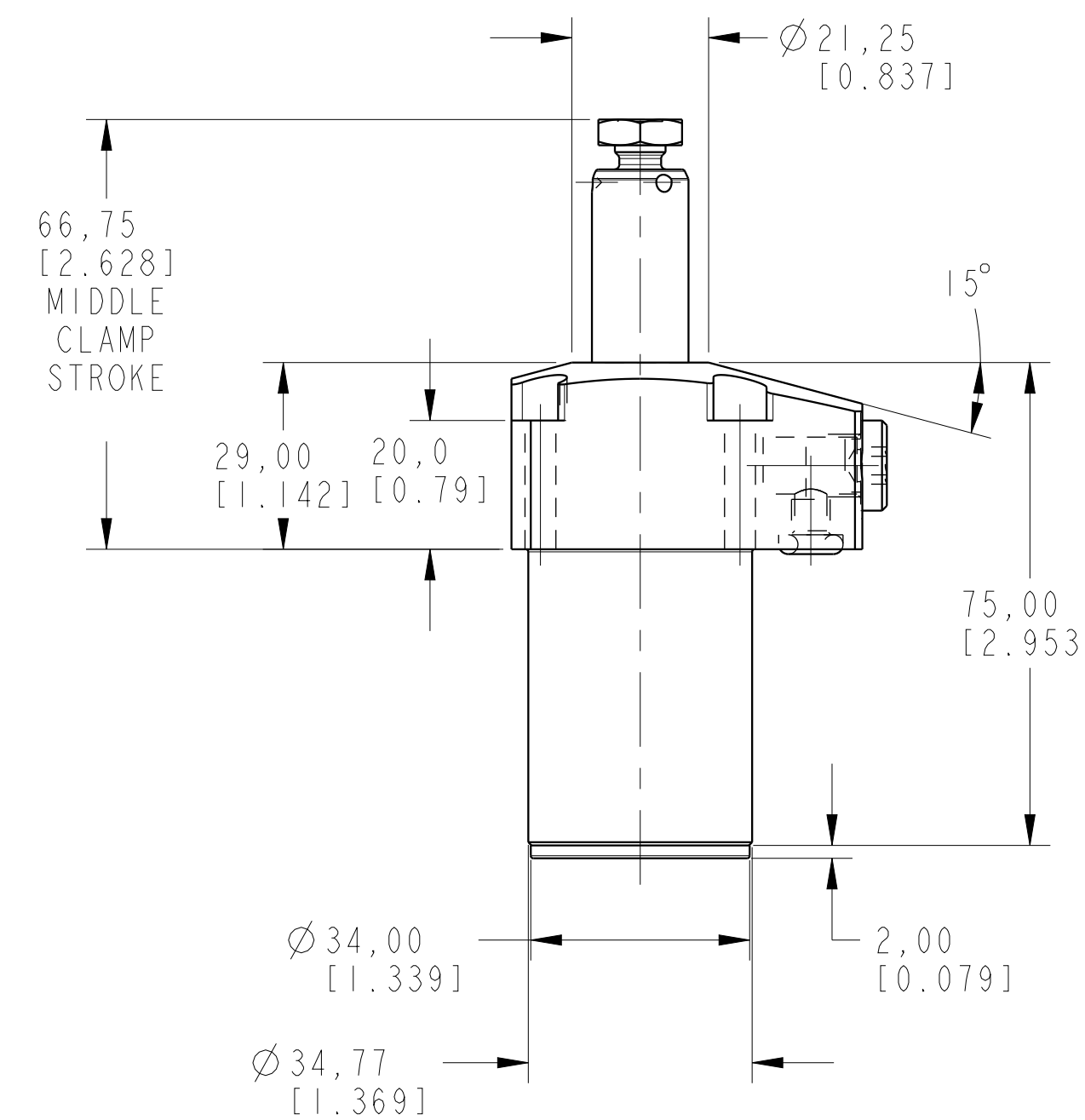
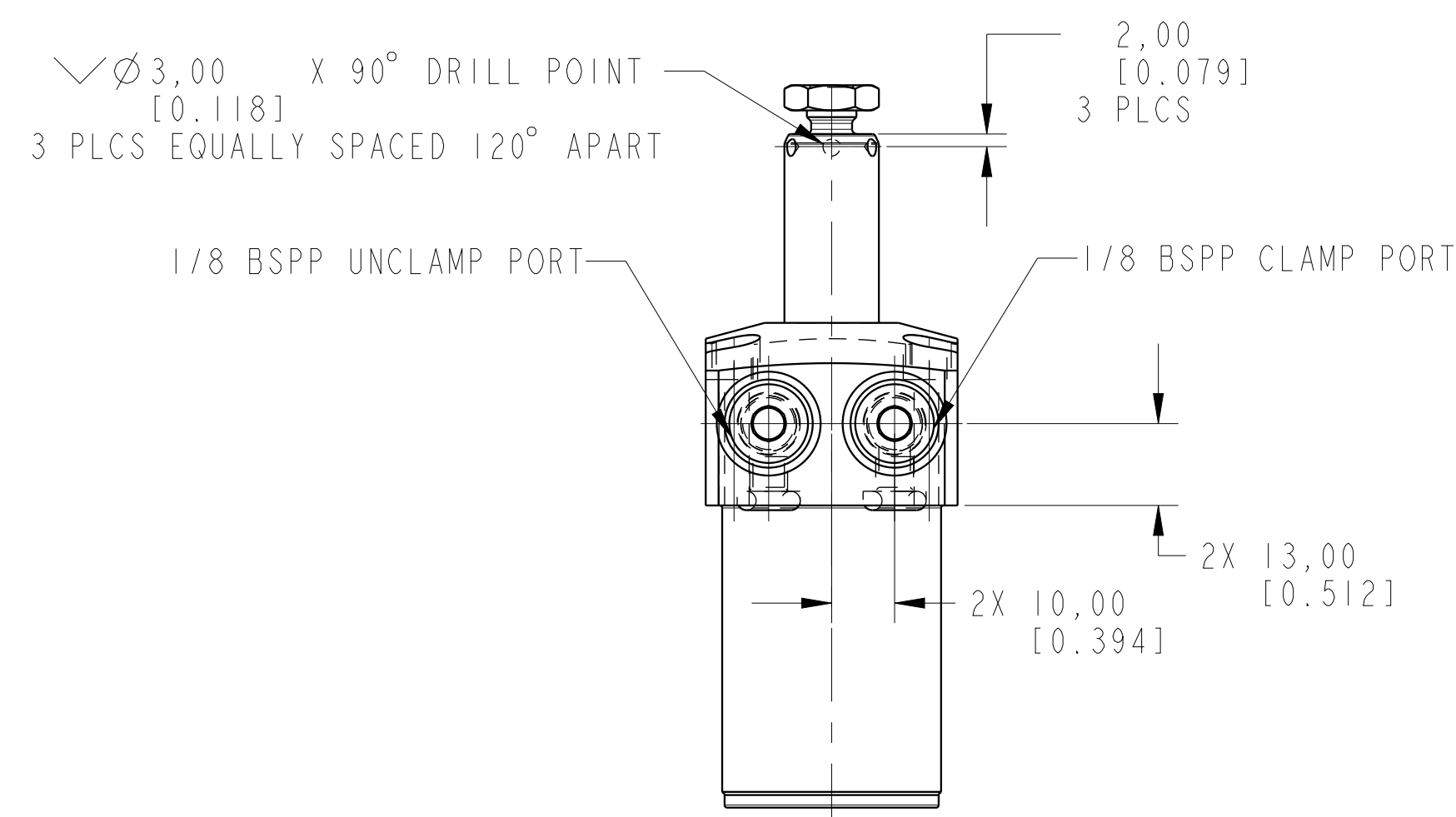
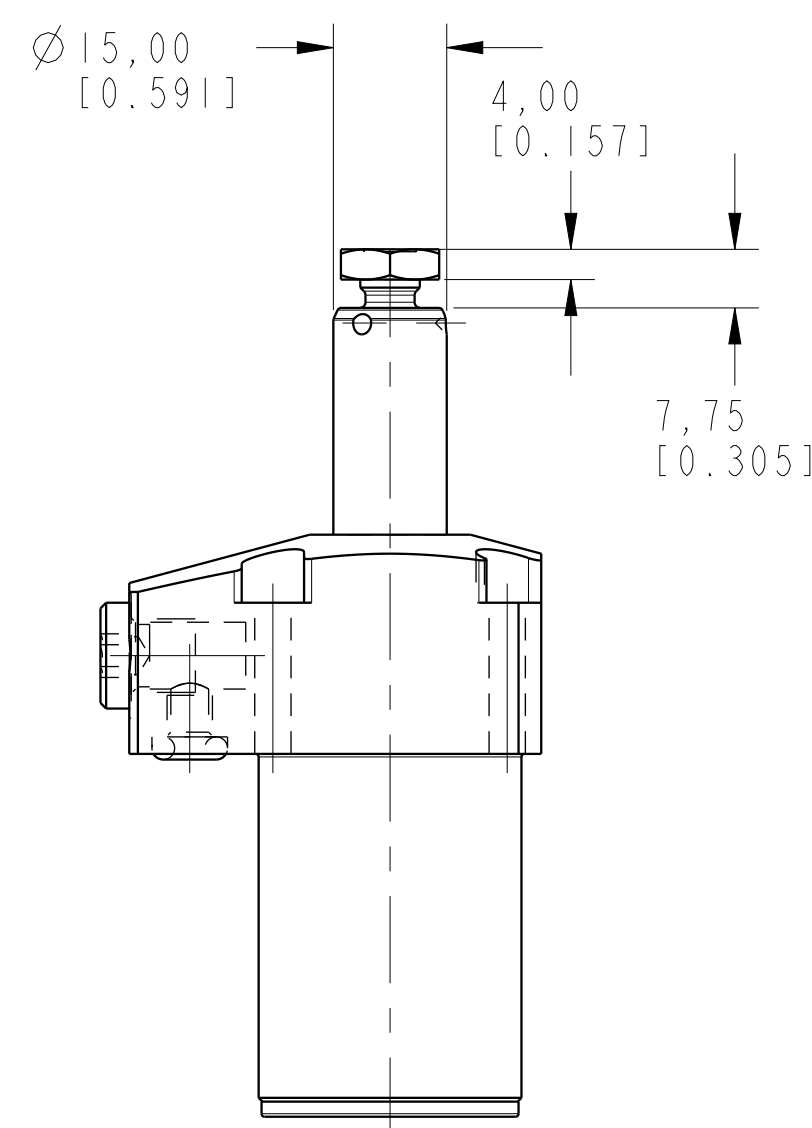
2

3

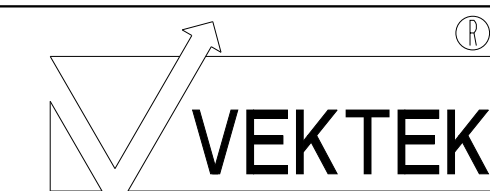
4



ILCML1402500S REV A ECN 3096



CAD CONTROL DRAWING



VEKTEK, INC.
1334 E. SIXTH AVE. P.O. BOX 625
EMPORIA, KS. 66801 U.S.A.

A	3096	RELEASE	MAJ	9/20/16
REV	IN ACCORDANCE WITH ECN	EFFECTIVE DATE	REVISED BY	DATE
DRW BY:	MAJ	DRAWING STATUS: Released		
DATE:	9/19/16	PRODUCTION APPROVED FOR RELEASED STATUS ONLY		

LI402500S	A	SC, TF, 7MP α , 25B, STR
REFERENCE MODEL	REF REV	*****
TOLERANCES DO NOT APPLY DIMENSIONS ARE NOMINAL	UNITS mm [inch]	SIZE D
		ILCML1402500S
		REV A

1

2

3

4

SHEET 1 OF 1