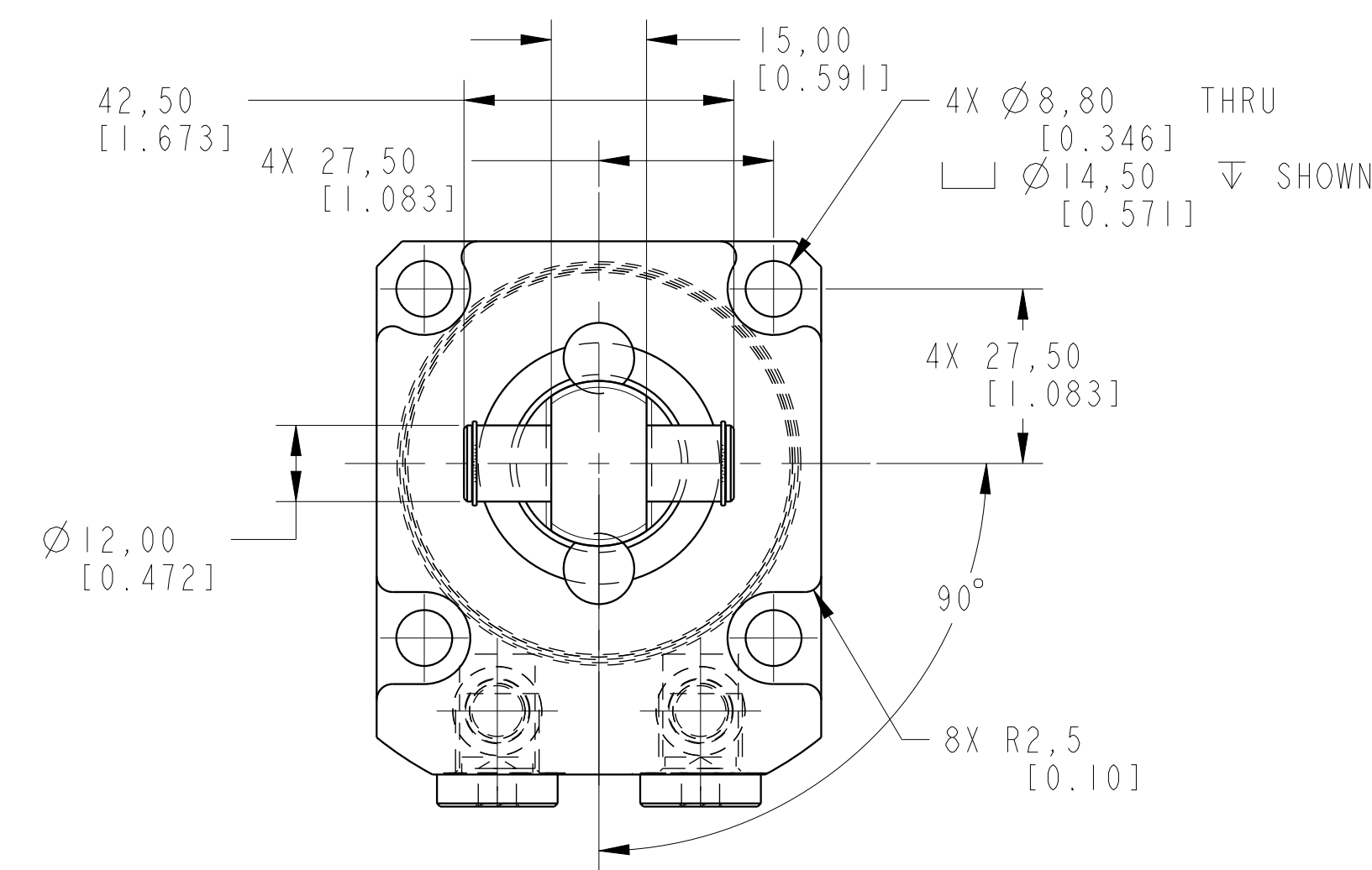
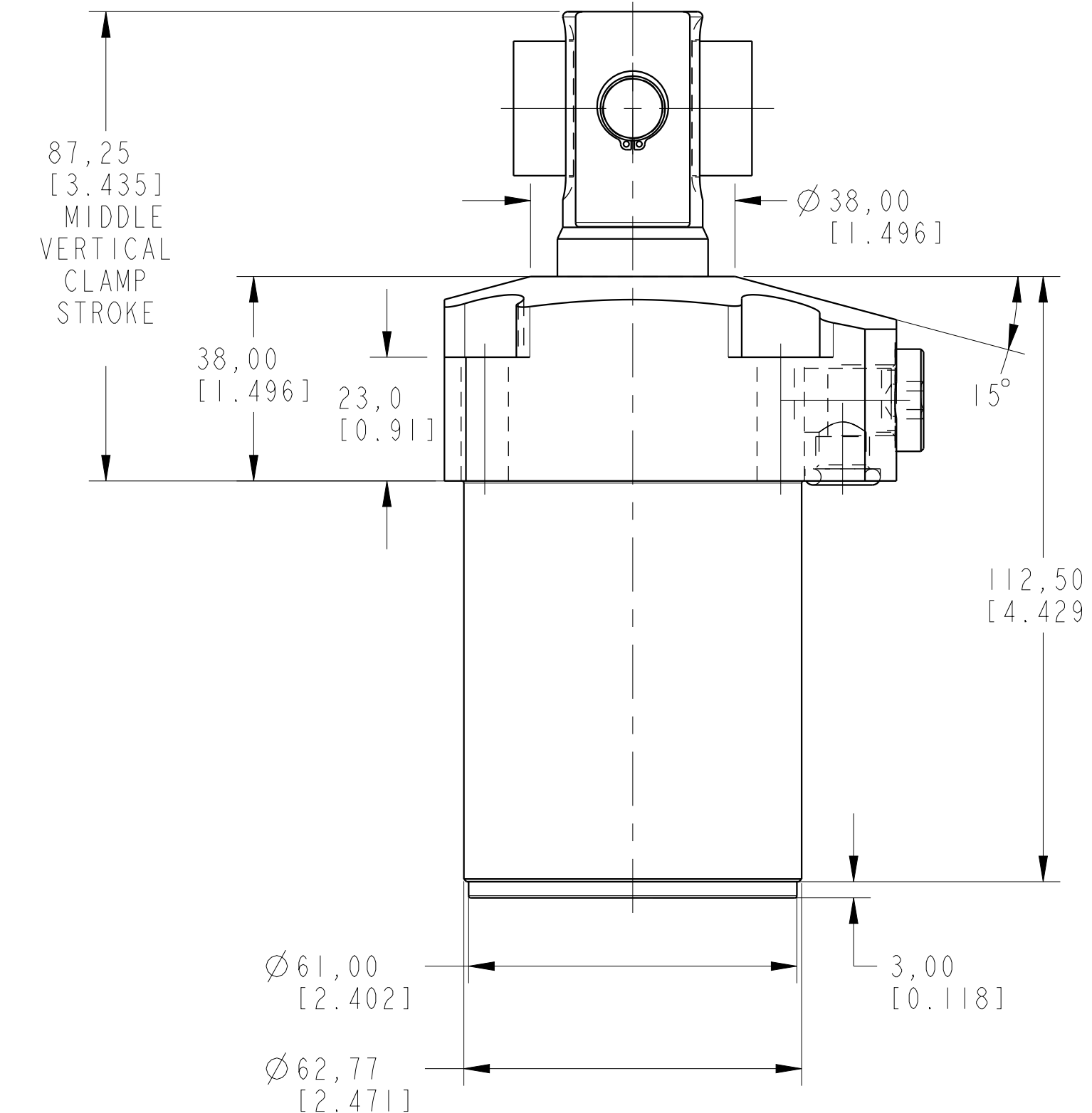
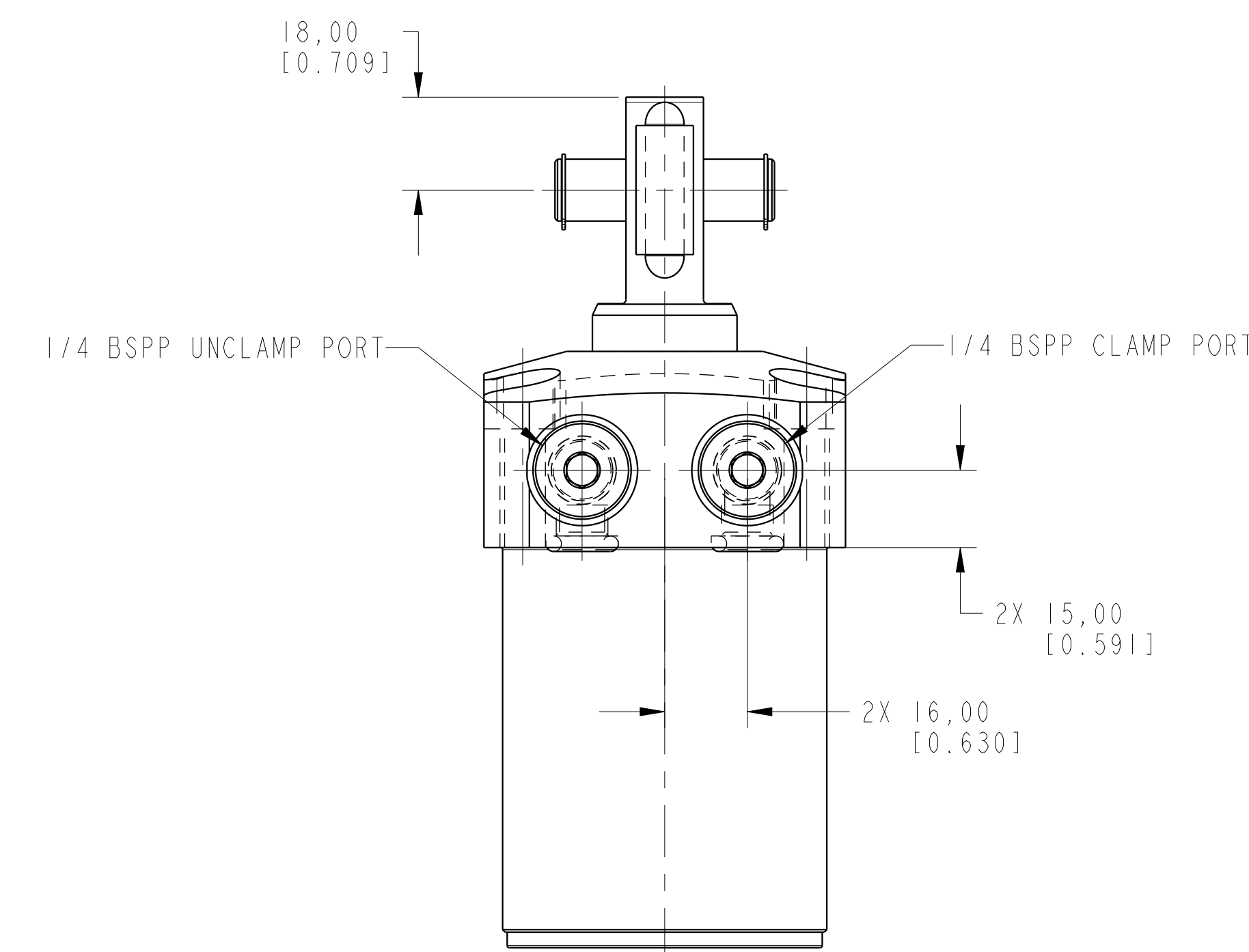
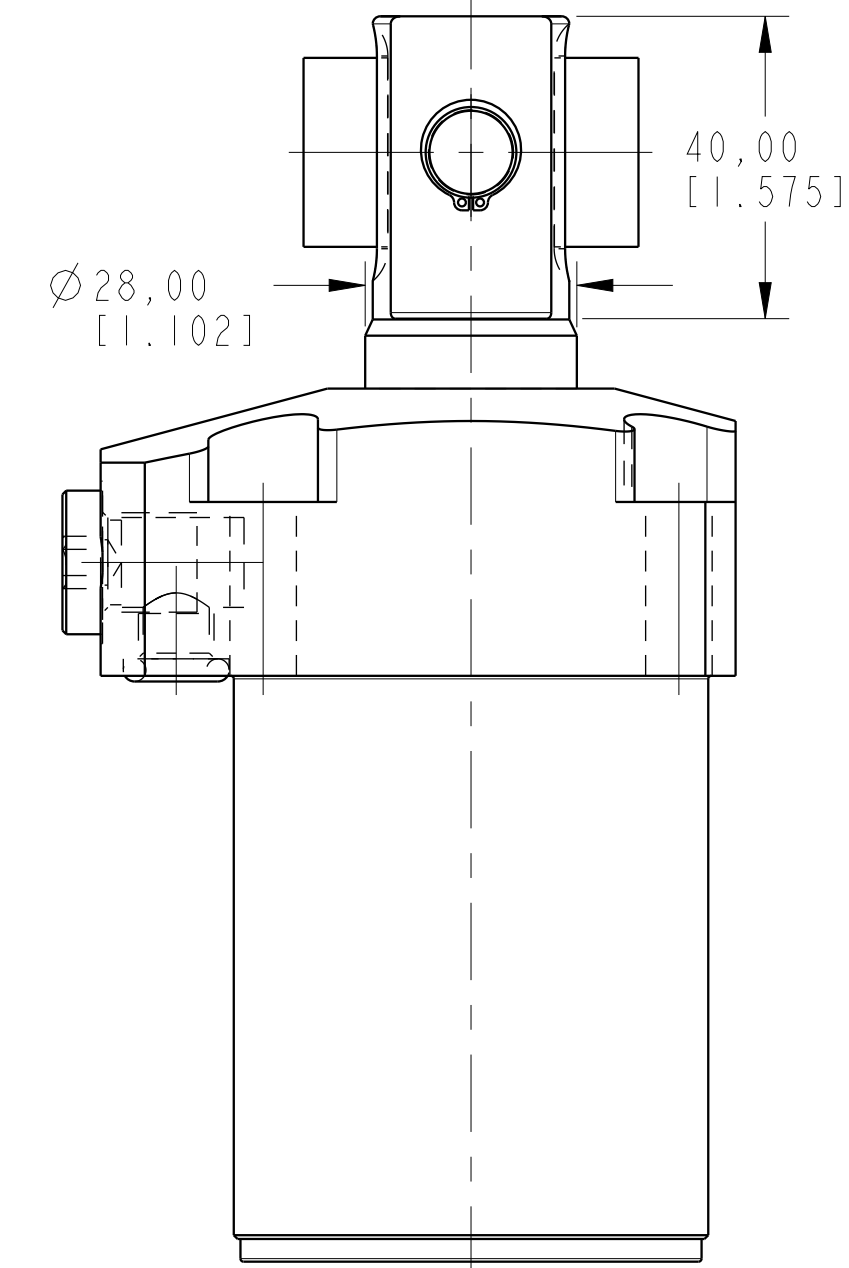


ILCML1405010R90 REV A ECN 2714



**CAD CONTROL DRAWING**

VEKTEK, INC.  
1334 E. SIXTH AVE. P.O. BOX 625  
EMPORIA, KS. 66801 U.S.A.

A	2714	RELEASE	MAJ	3-25-15	LI-4050-10-R-90	A	SC, TF, 7MPa, 50B, RH, CLEVIS, 90
REV	IN ACCORDANCE WITH ECN	EFFECTIVE DATE	REVISED BY	DATE	REFERENCE MODEL	REF REV	*****
DRW BY:	ALUTHI	DRAWING STATUS: <b>Released</b>			TOLERANCES DO NOT APPLY DIMENSIONS ARE NOMINAL		SIZE D
DATE:	8-13-14	PRODUCTION APPROVED FOR RELEASED STATUS ONLY			ILCML1405010R90		REV A