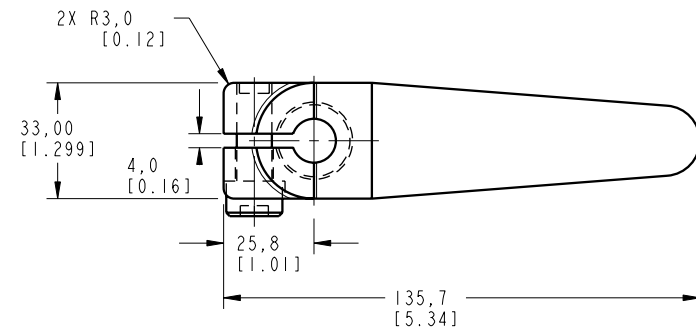
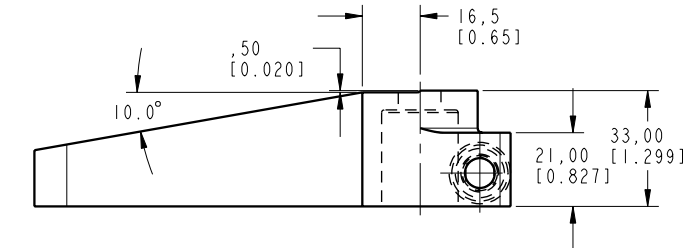
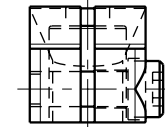
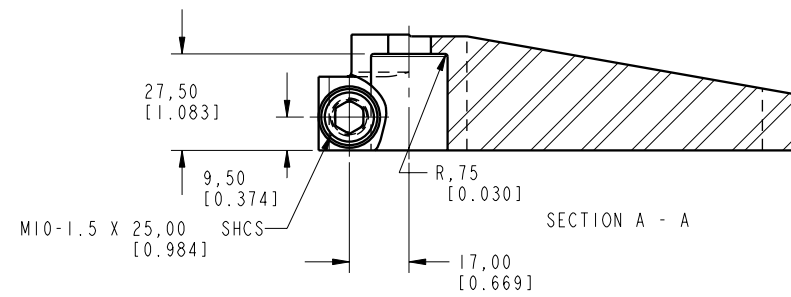
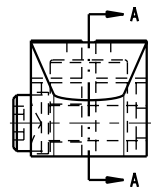


ILCML9144002 REV A ECN 2549



CAD CONTROL DRAWING



VEKTEK, INC.  
1334 E. SIXTH AVE. P.O. BOX 625  
EMPORIA, KS. 66801 U.S.A.

REV	A	2549	RELEASE	OMITCHELL	6-3-13	L9144002	A	ARM, SC, 7MPa, 40B, LONG
REV	IN ACCORDANCE WITH ECN		EFFECTIVE DATE	REVISED BY	DATE	REFERENCE MODEL	REF REV	*****
DRW BY:	ALUTHI		DRAWING STATUS: <b>ECN</b>			TOLERANCES DO NOT APPLY	UNITS	SIZE
DATE:	2-4-13		PRODUCTION APPROVED FOR RELEASED STATUS ONLY			DIMENSIONS ARE NOMINAL	mm [inch]	D
						ILCML9144002	REV	A

FORM FEQ036, Rev. B

SHEET 1 OF 1