

1

2

3

4

D

D

C

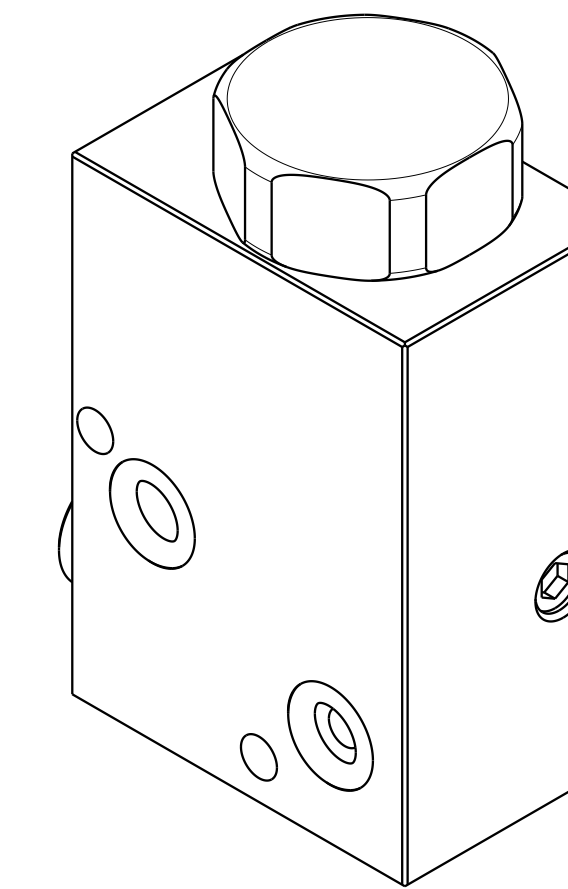
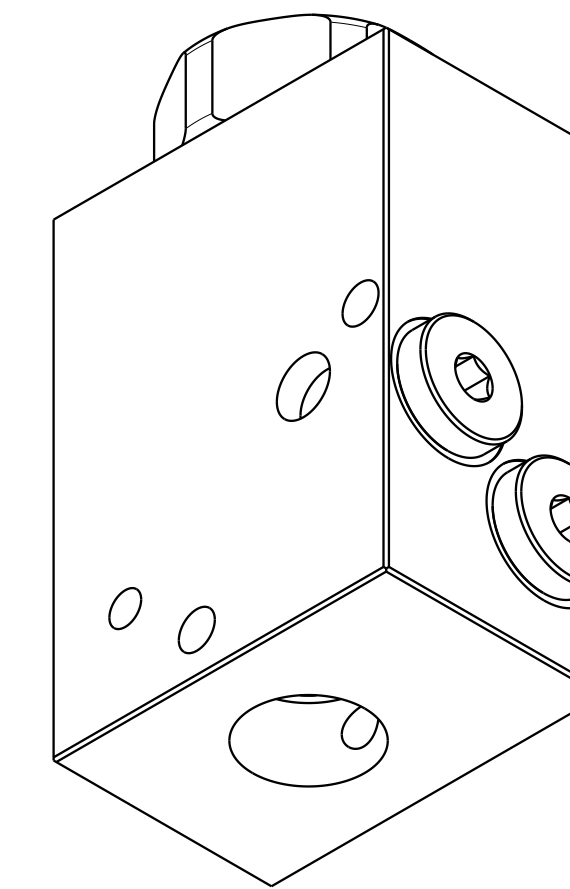
C

B

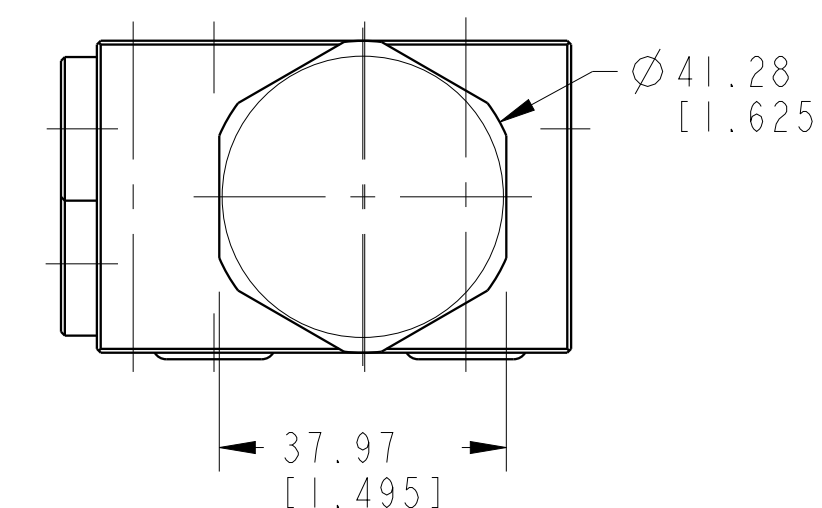
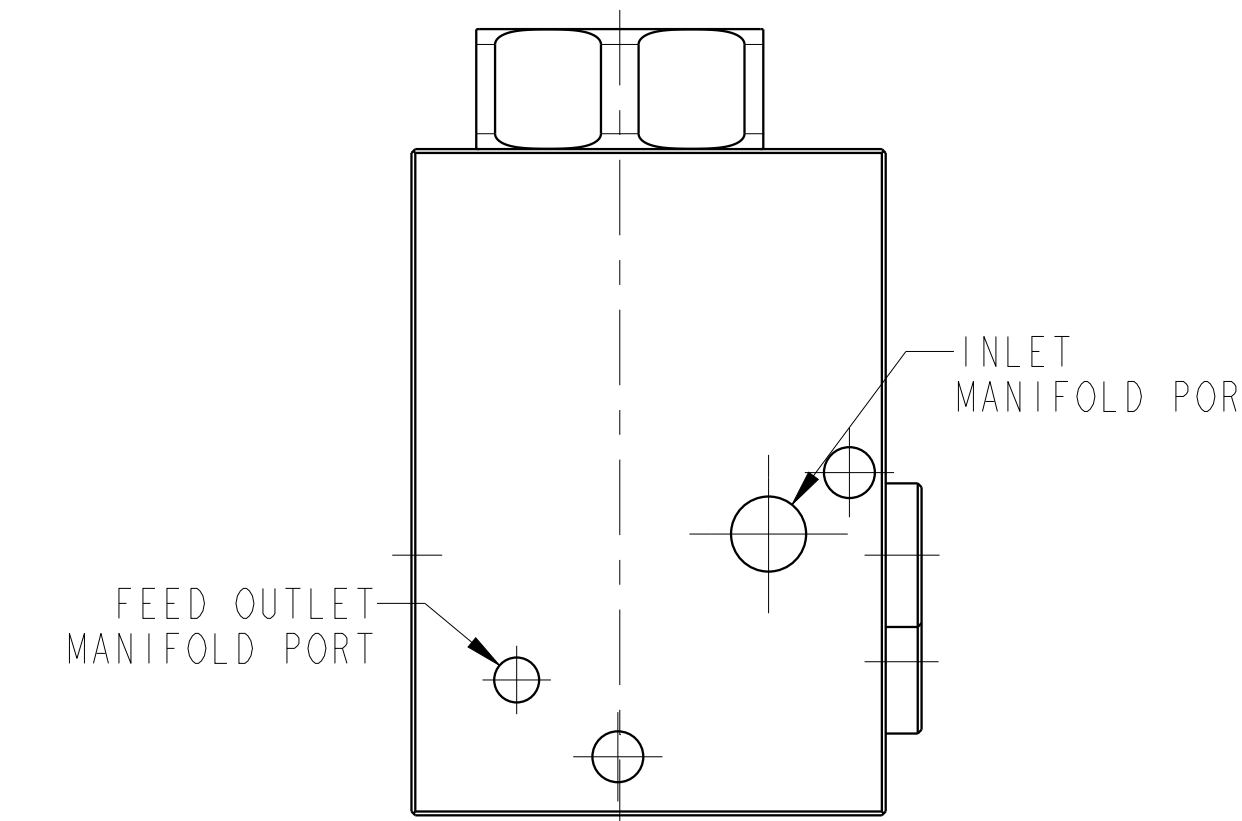
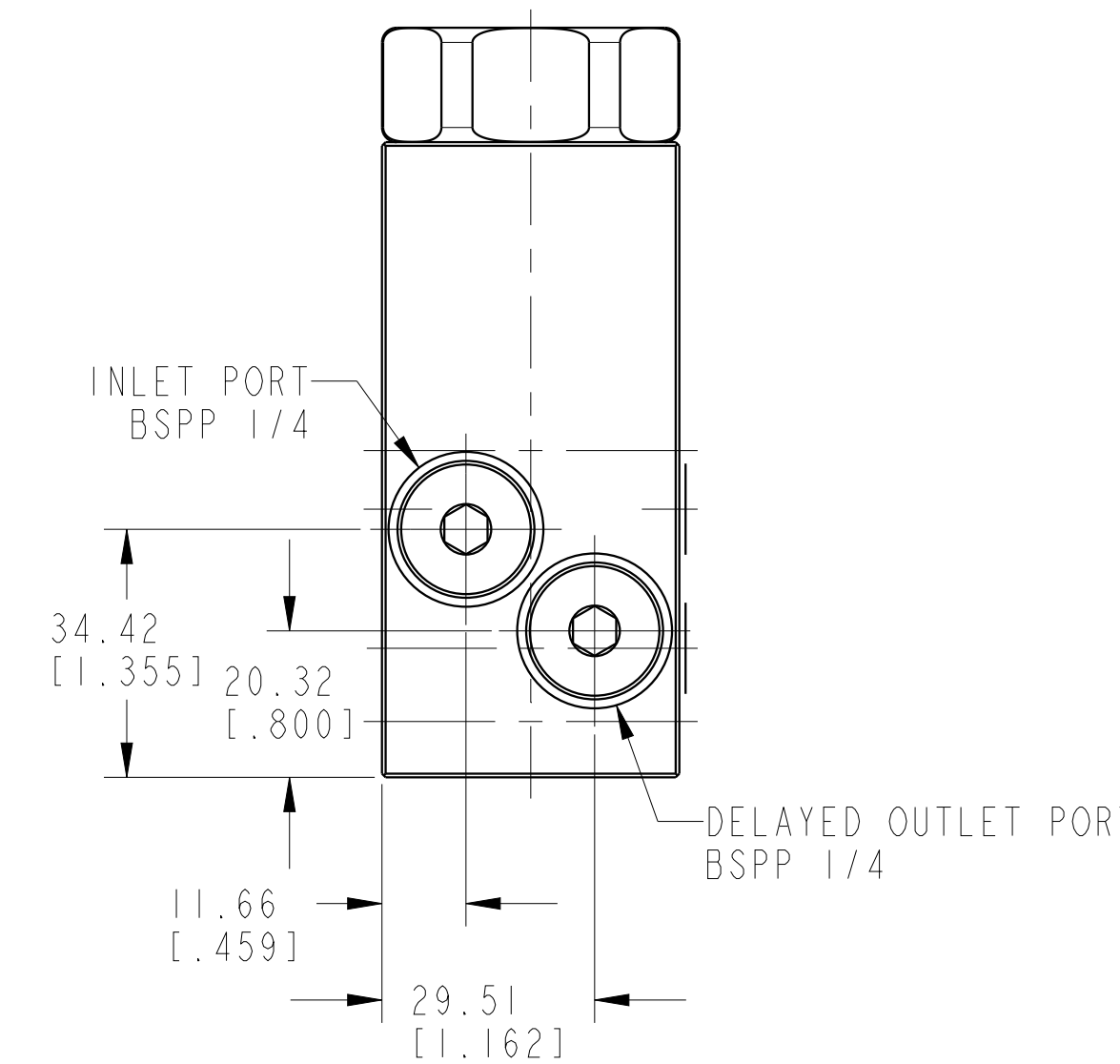
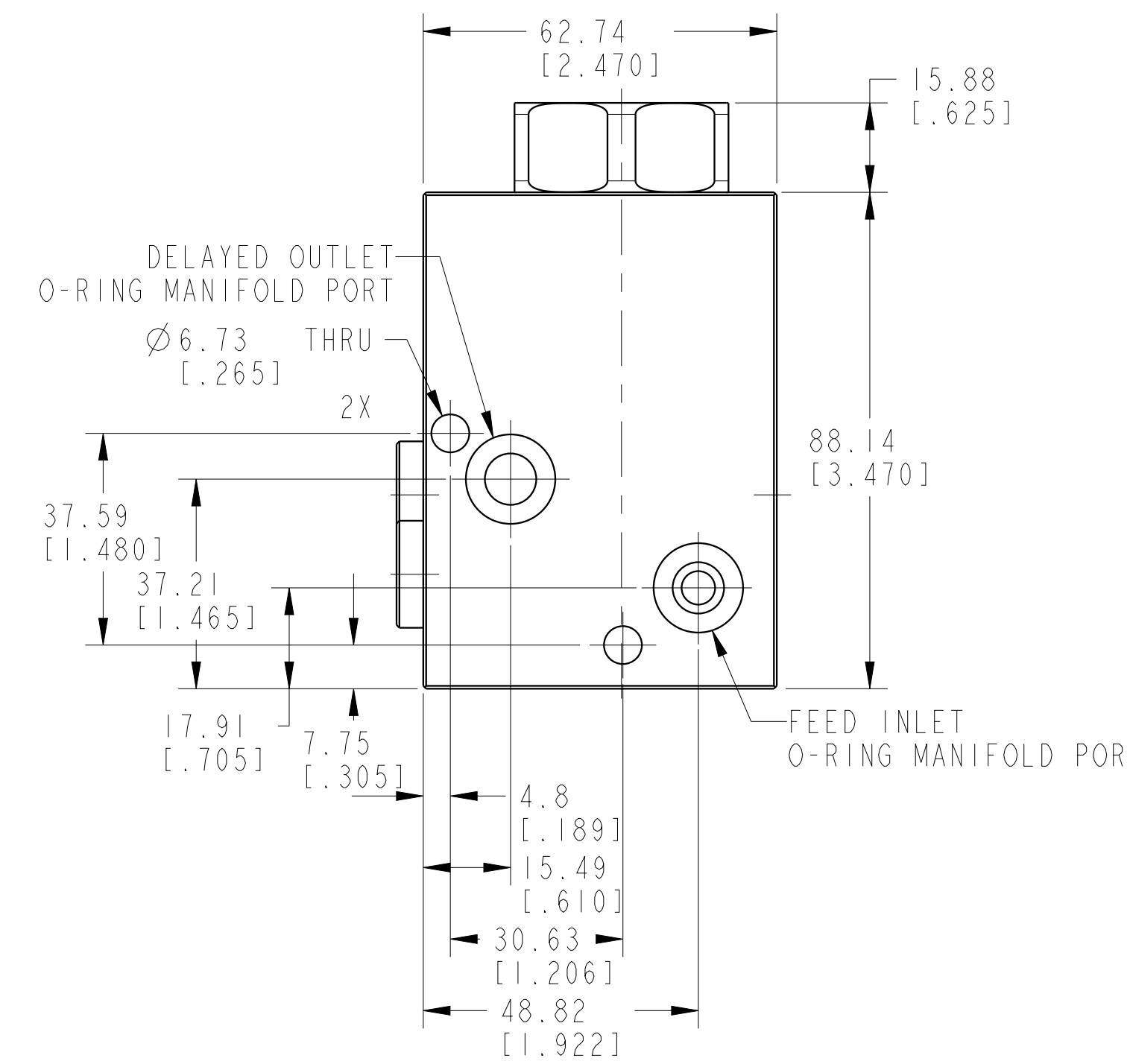
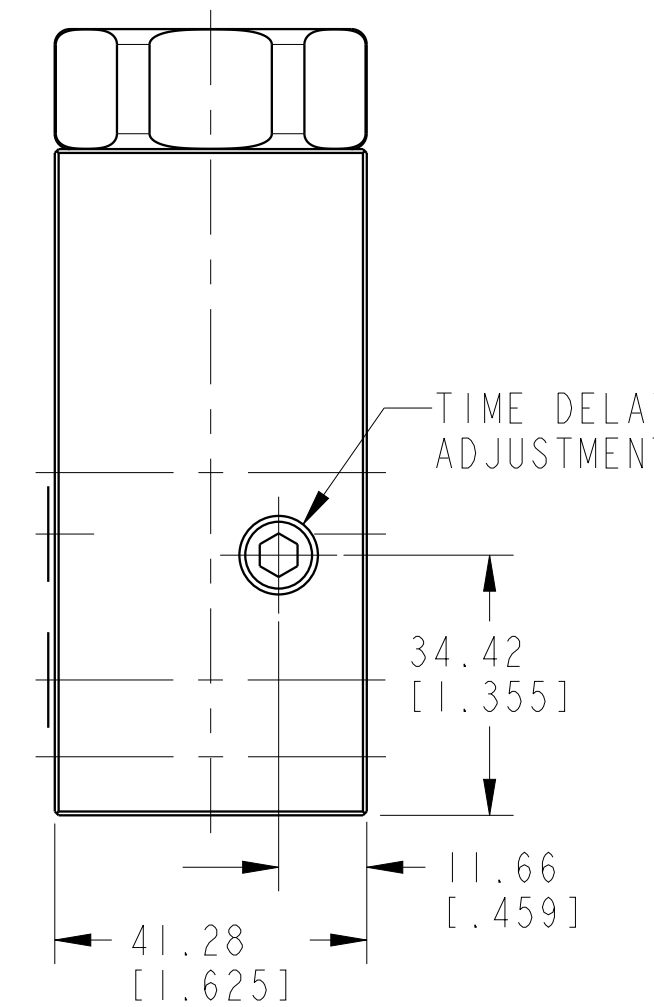
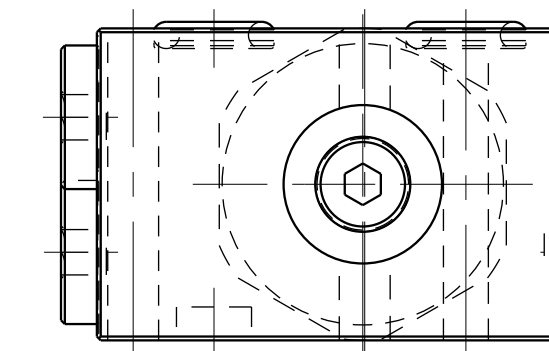
B

A

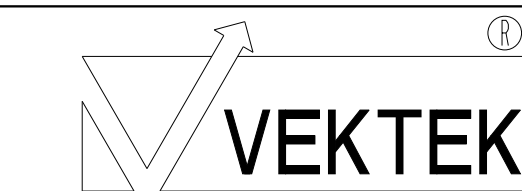
A



ILCML7043100 REV A ECN 2829



CAD CONTROL DRAWING



VEKTEK, INC.  
1334 E. SIXTH AVE. P.O. BOX 625  
EMPORIA, KS. 66801 U.S.A.

A	2829	RELEASE	ALUTHI	3-26-15	L7-0431-00	A	VALVE, UNCLAMP DELAY, 7MPa
REV	IN ACCORDANCE WITH ECN	EFFECTIVE DATE	REVISED BY	DATE	REFERENCE MODEL	REF REV	*****
DRW BY:	ALUTHI	DRAWING STATUS: Released			TOLERANCES DO NOT APPLY	UNITS	SIZE
DATE:	3-26-15	PRODUCTION APPROVED FOR RELEASED STATUS ONLY			DIMENSIONS ARE NOMINAL	mm (inch)	D
					ILCML7043100	REV	A

1

2

3

4

SHEET 1 OF 1