

1

2

3

4

D

D

C

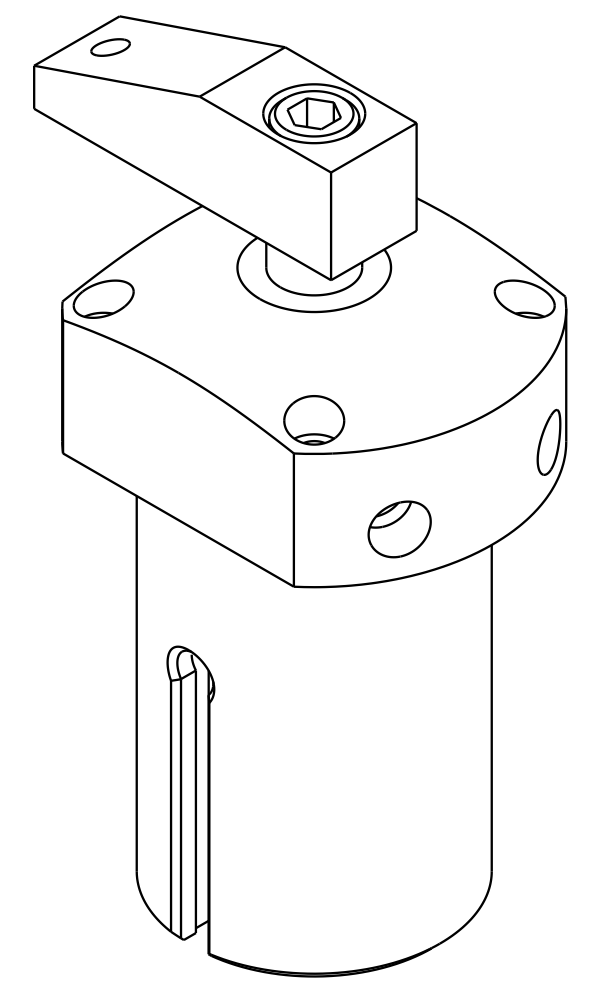
C

B

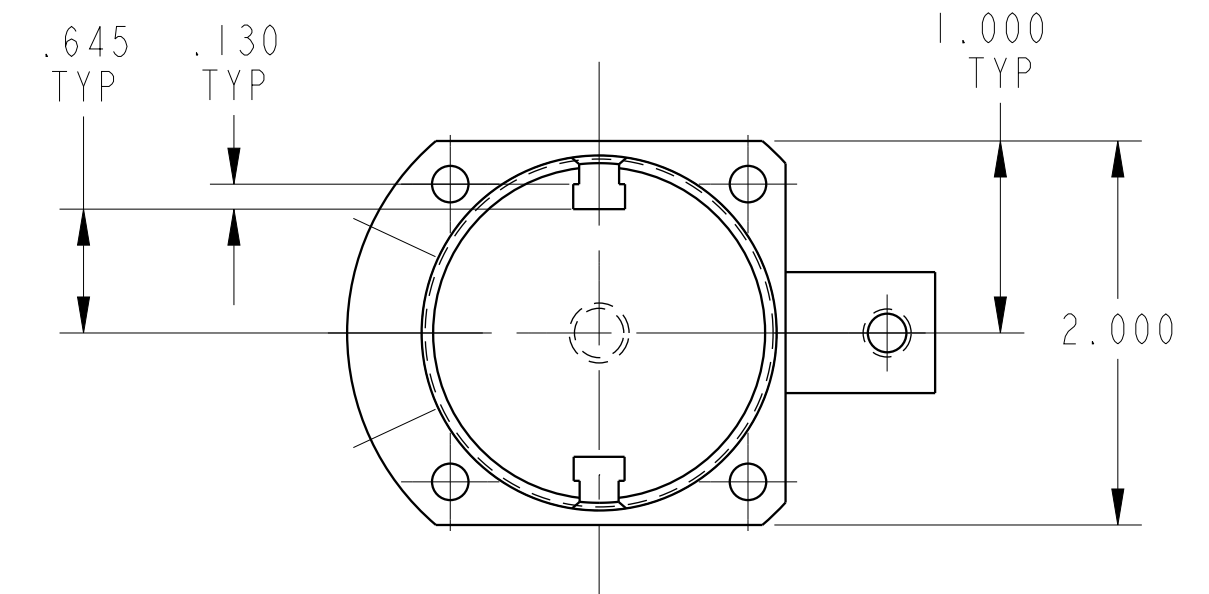
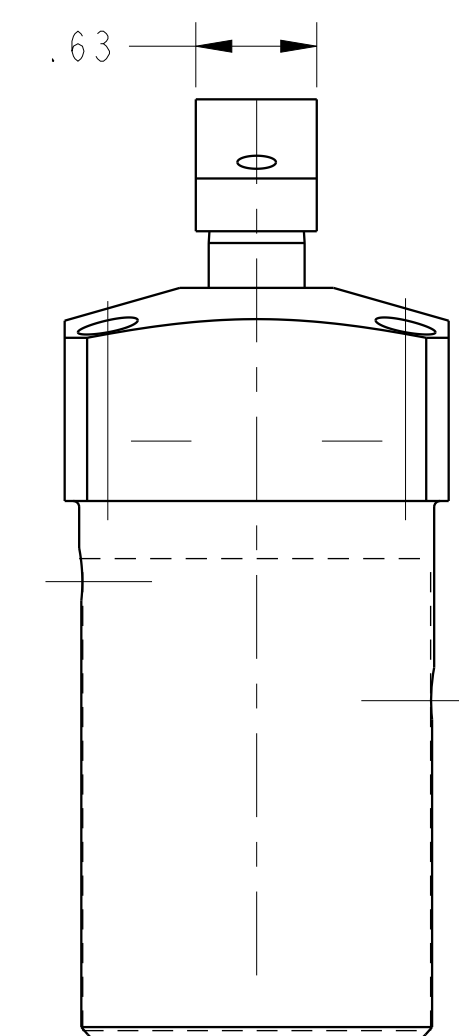
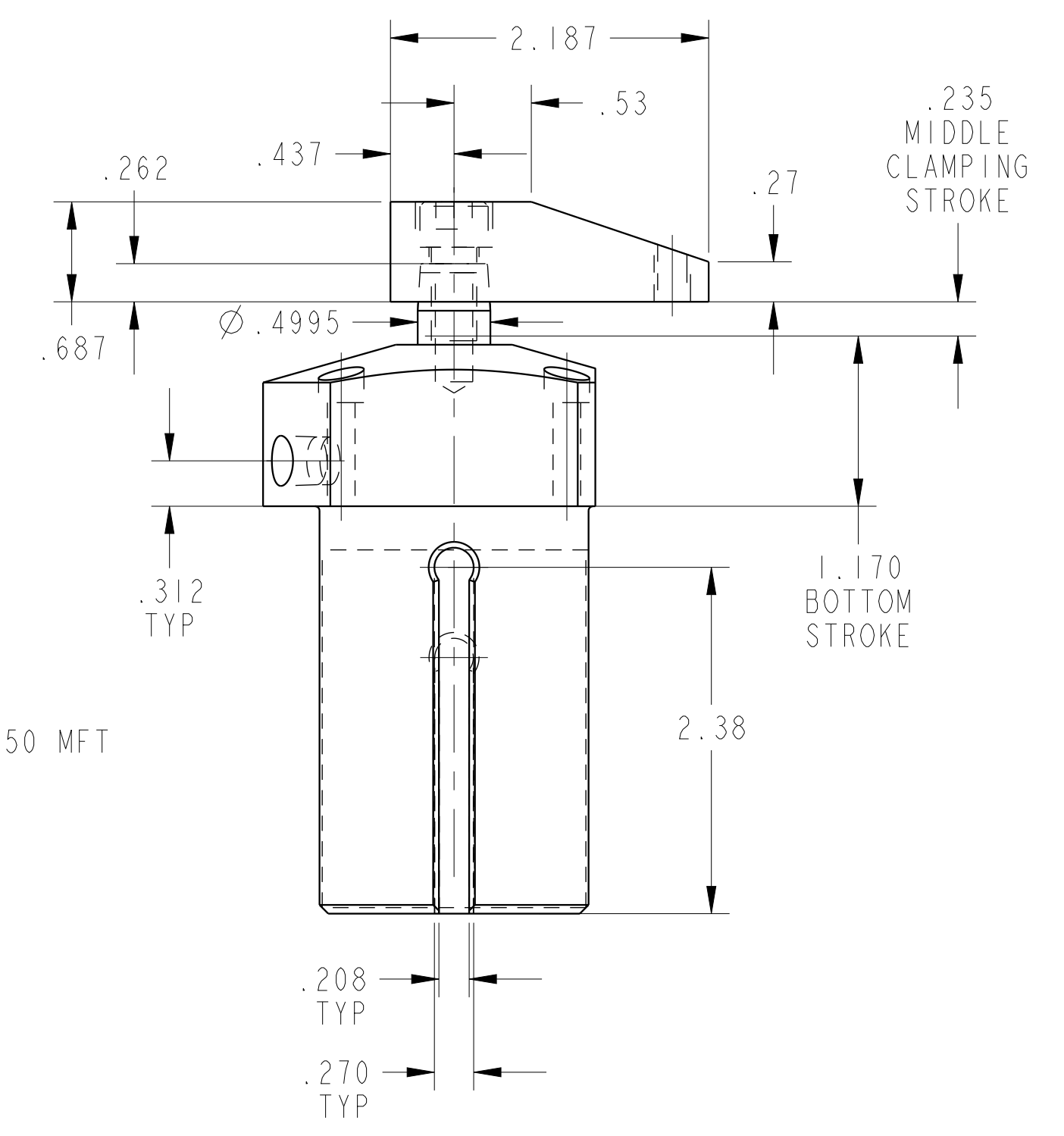
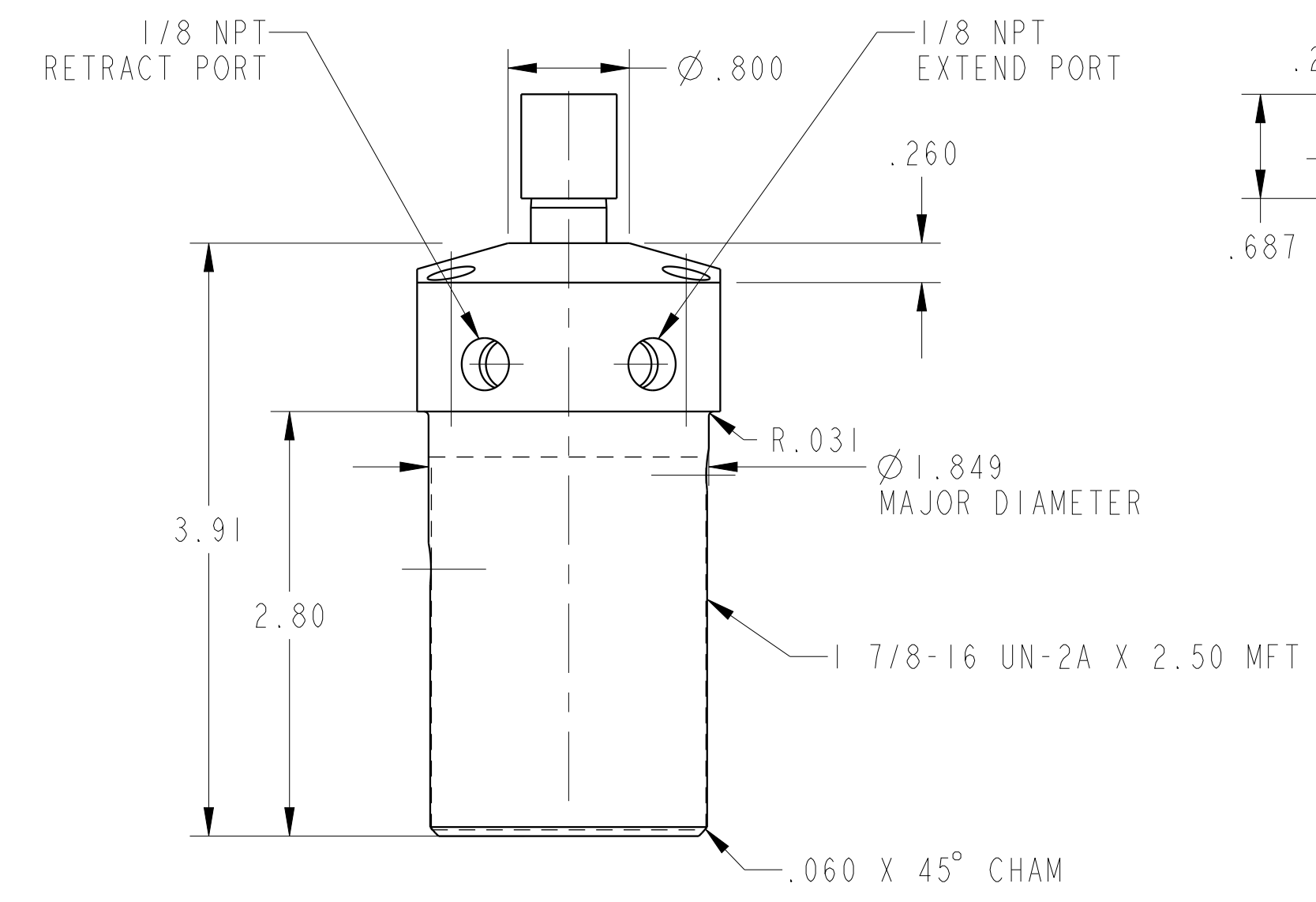
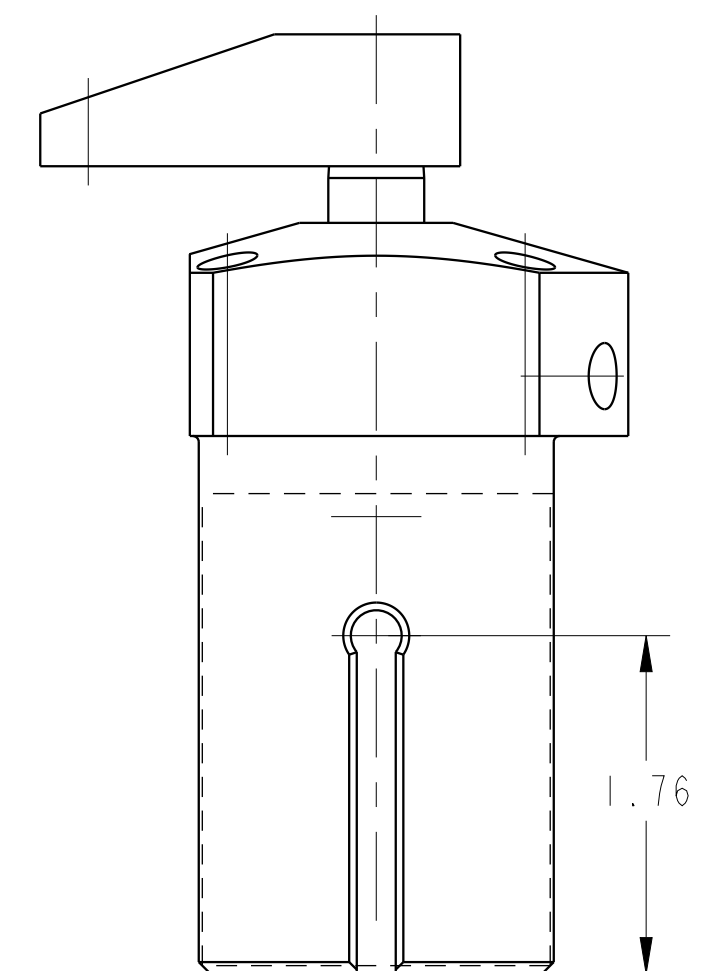
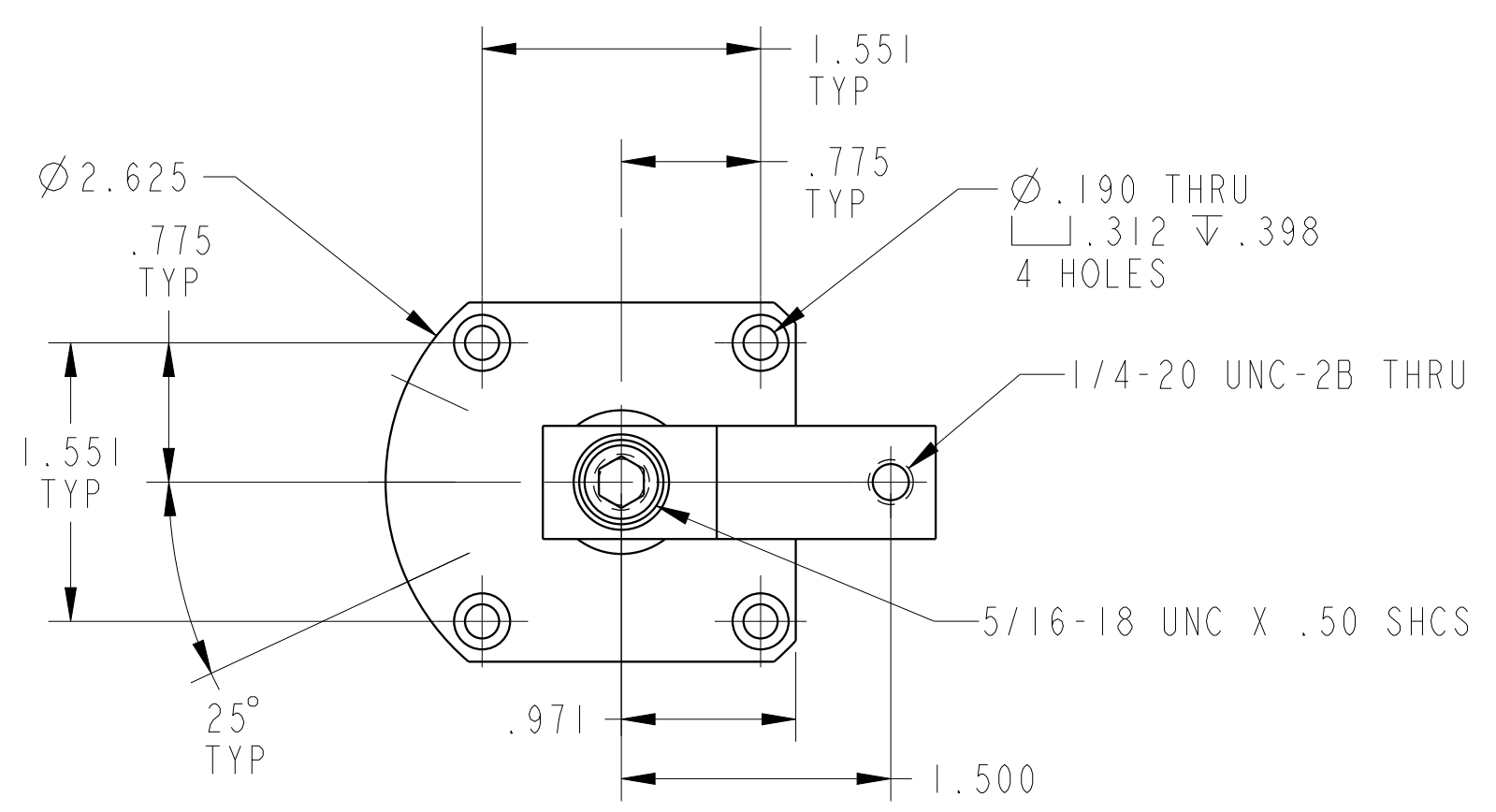
B

A

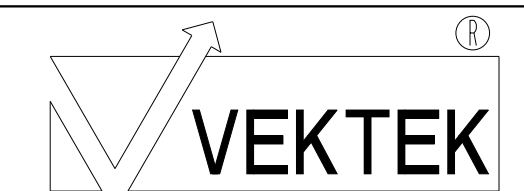
A



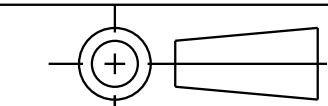
ILCPI511600 REV D ECN 5257



CAD CONTROL DRAWING



VEKTEK, INC.
 1334 E. SIXTH AVE. P.O. BOX 625
 EMPORIA, KS. 66801 U.S.A.



D	5257	RELEASE	RLK	3/5/24	P1511600	6	ASSY, SC, PNEU, TF, 1 1/8, LH
REV	IN ACCORDANCE WITH ECN	EFFECTIVE DATE	REVISED BY	DATE	REFERENCE MODEL	REF REV	
DRW BY:	K. ROEMER	DRAWING STATUS: Released			TOLERANCES DO NOT APPLY		SIZE
DATE:	09-27-06	PRODUCTION APPROVED FOR RELEASED STATUS ONLY			DIMENSIONS ARE NOMINAL		D

ILCPI511600 REV D

FORM FEG036, Rev. B

1

2

3

4

SHEET 1 OF 1