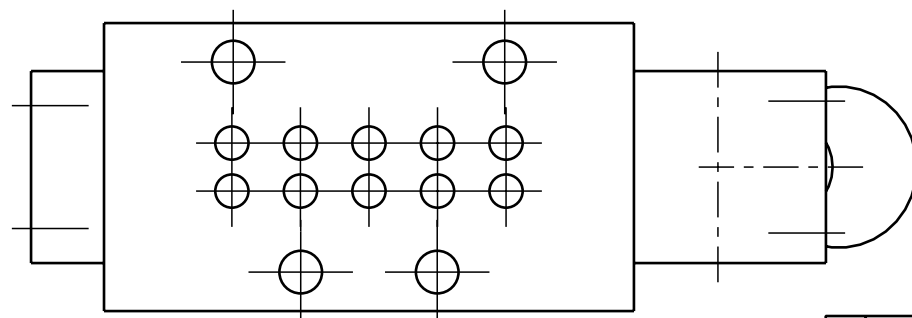


ILCP7103000 REV B ECN1601



**CAD CONTROL  
DRAWING**



VEKTEK, INC.  
1334 E. SIXTH AVE. P.O. BOX 625  
EMPORIA, KS. 66801 U.S.A.

B	1601	RELEASE	K. ROEMER	11-17-06	P7103000	C	ASSY, VALVE, AIR, 5/2, ISO1, MAN
REV	IN ACCORDANCE WITH ECN	EFFECTIVE DATE	REVISED BY	DATE	REFERENCE MODEL	REF REV	''''
DRW BY:	K. ROEMER	<b>DRAWING STATUS: Released</b>			TOLERANCES DO NOT APPLY DIMENSIONS ARE NOMINAL		SIZE B
DATE:	11-17-06	PRODUCTION APPROVED FOR RELEASED STATUS ONLY			ILCP7103000		REV B

FORM FEG036, Rev. A

SHEET 1 OF 1