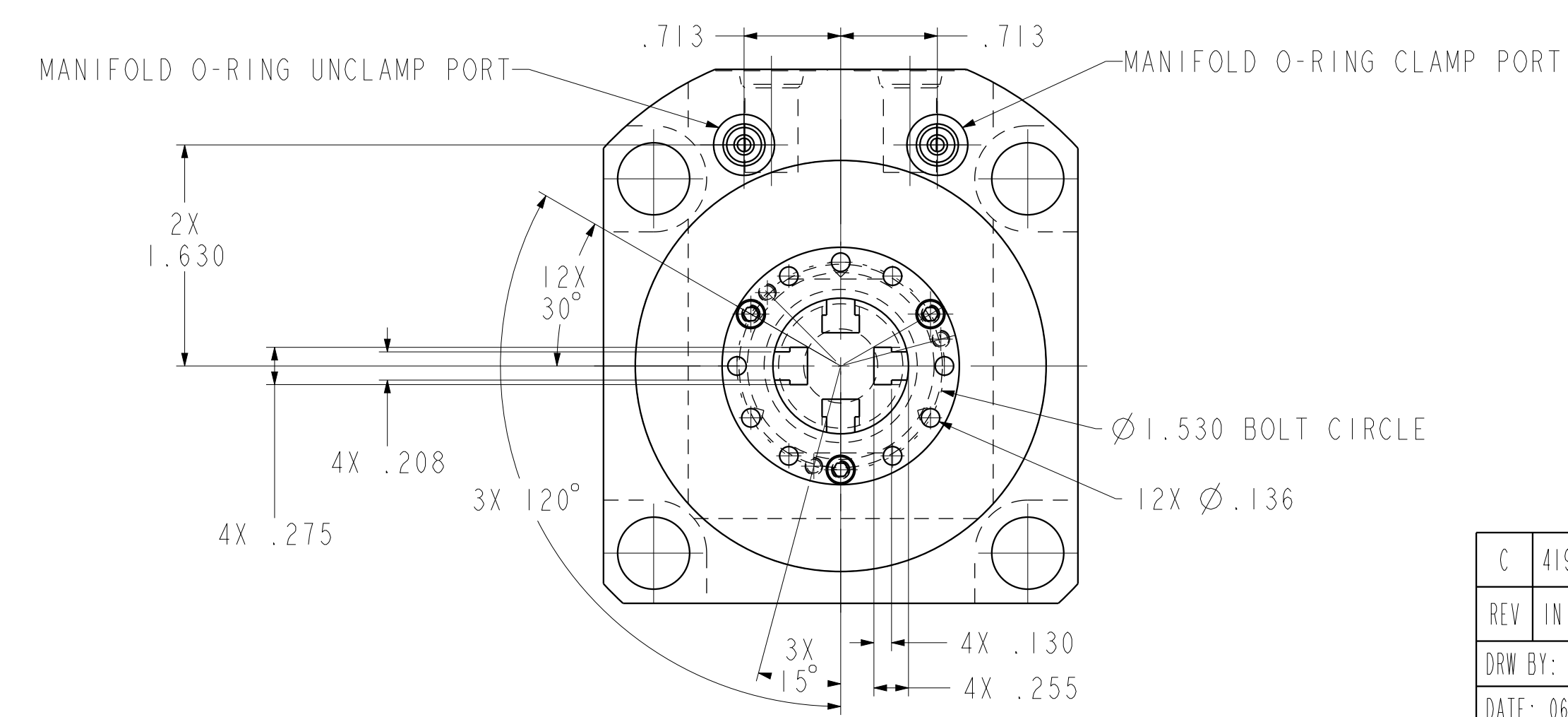
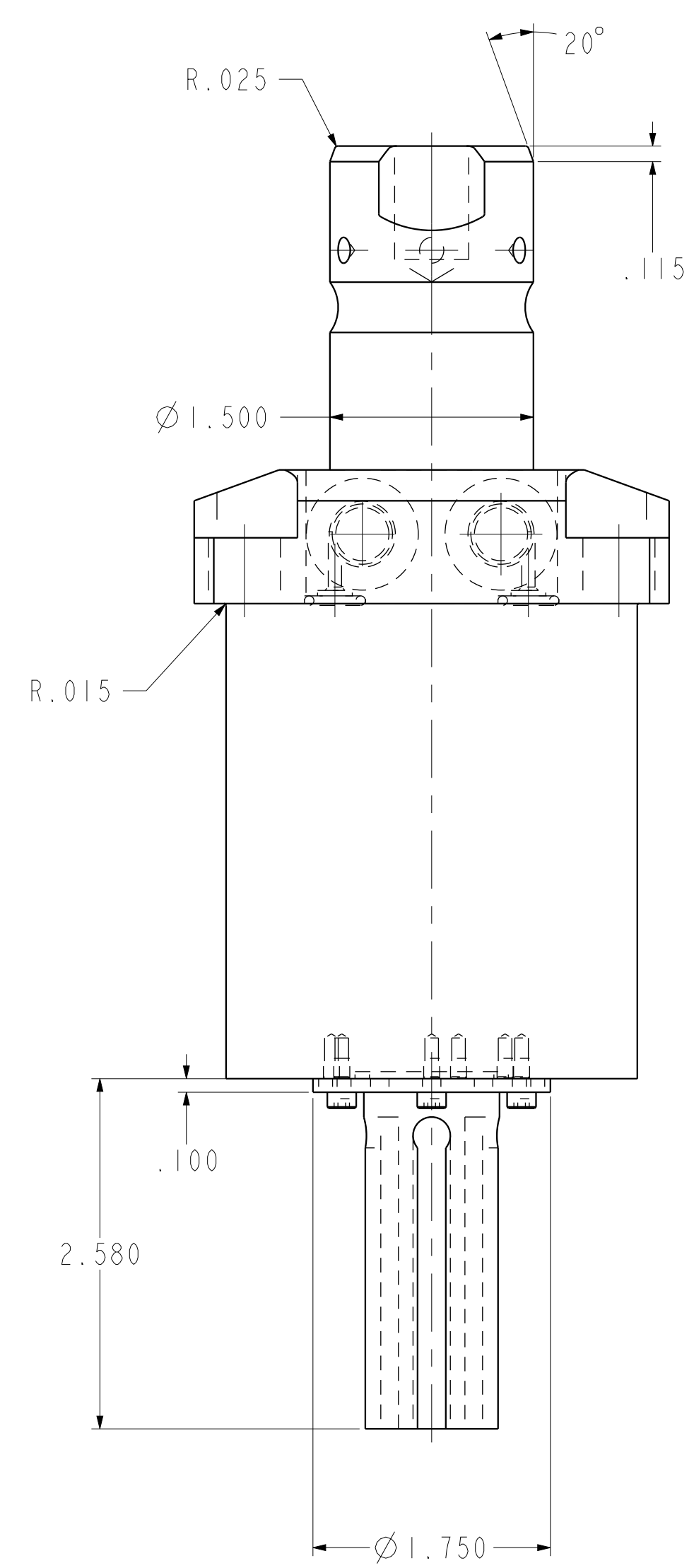
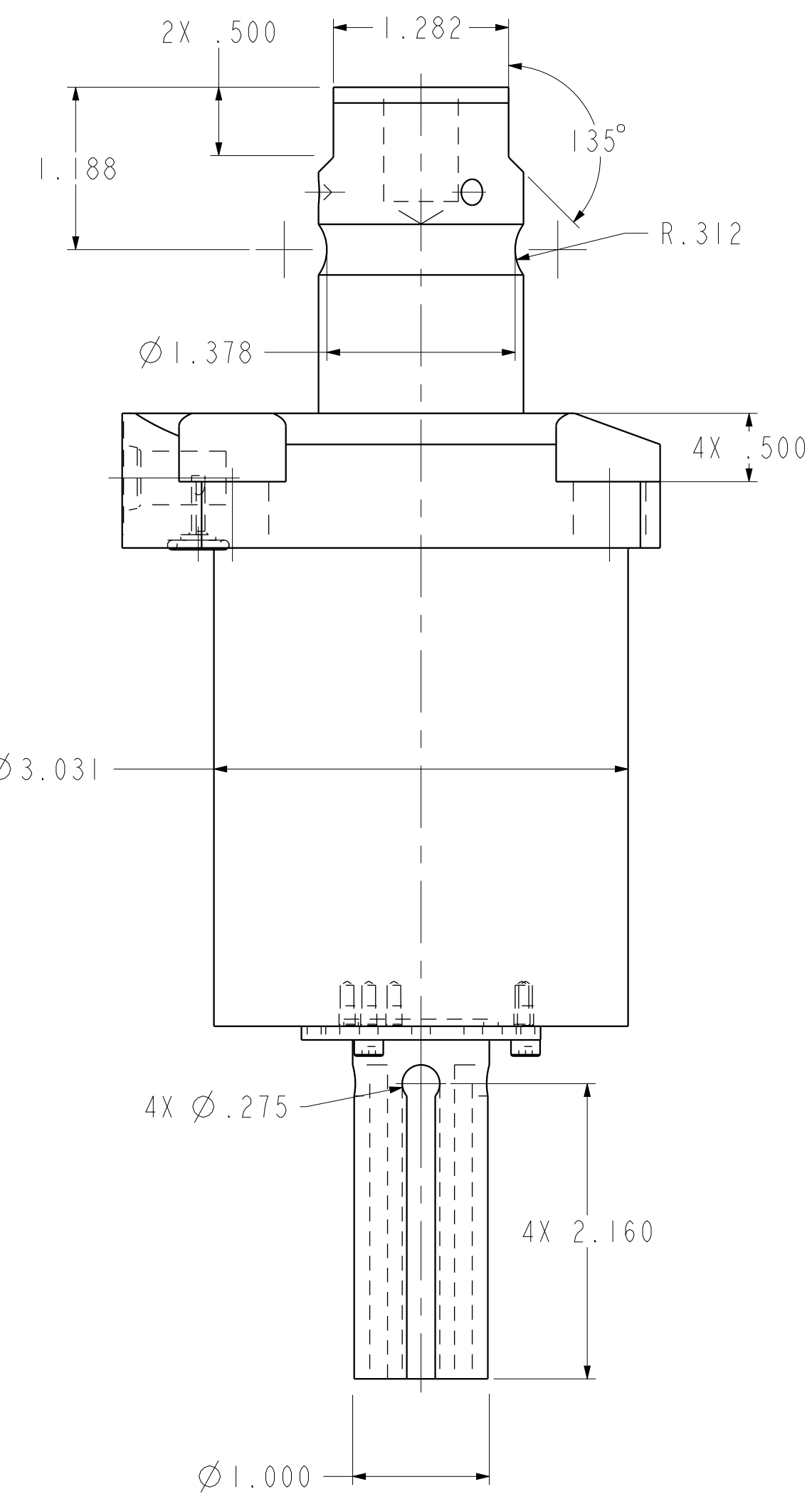
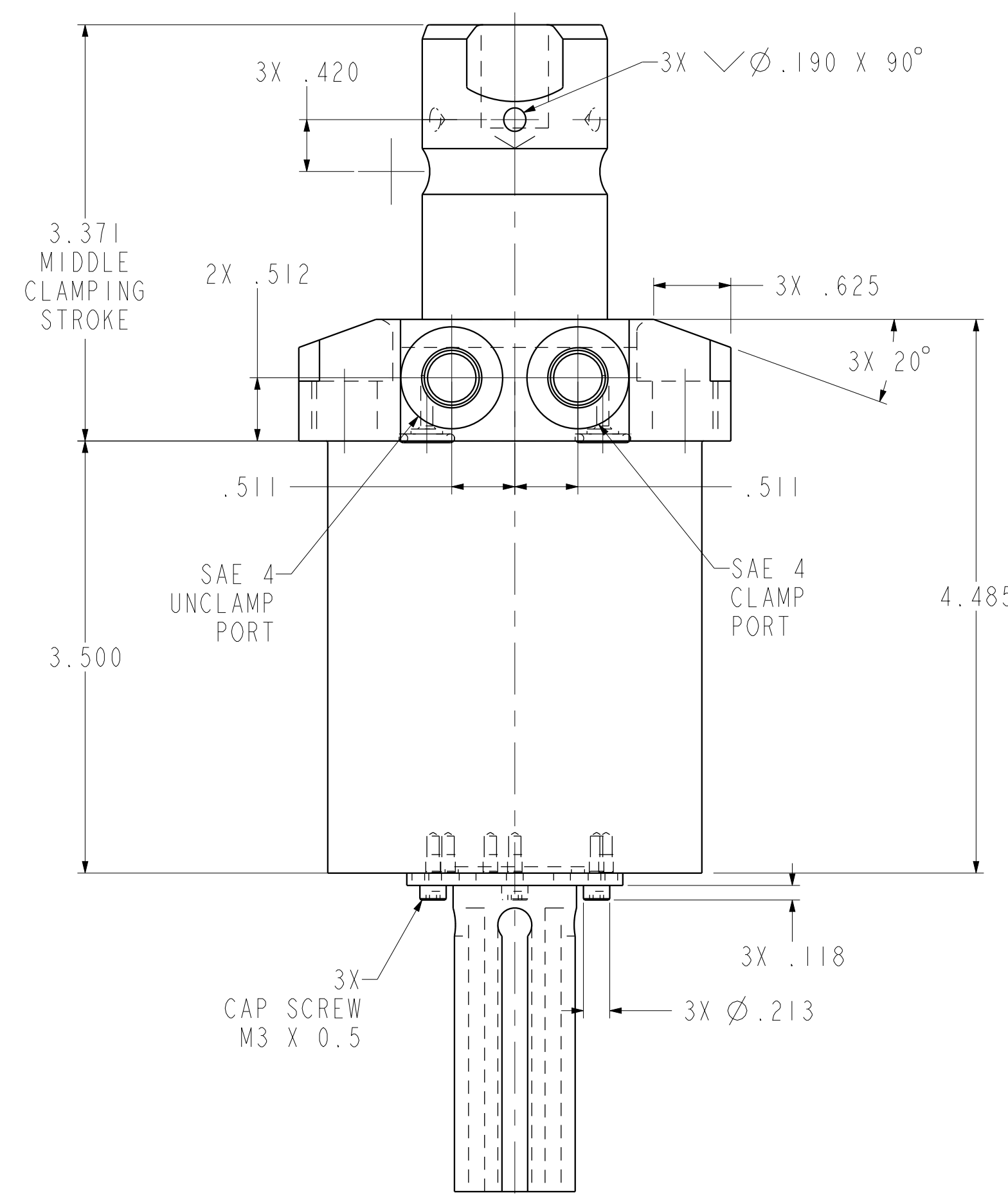
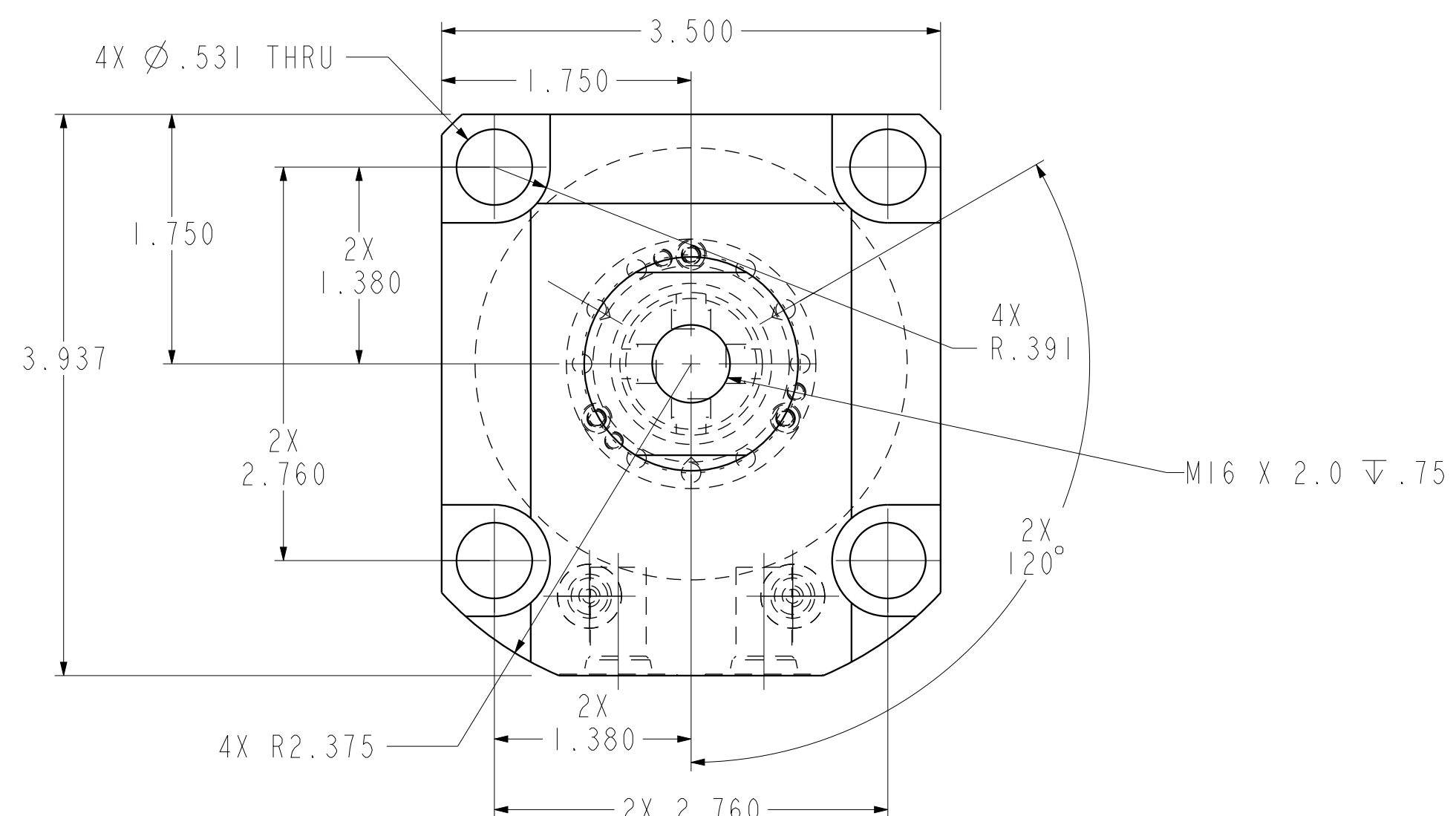


ILCI406210IPS REV C ECN 4191



<b>CAD CONTROL DRAWING</b>			
		VEKTEK, INC. 1334 E. SIXTH AVE. P.O. BOX 625 EMPORIA, KS. 66801 U.S.A.	

C	4191	RELEASE	JDW	05/22/20	1406210IPS	A	SC, LP, TF, TC, 7500, DA, LH, PS
REV	IN ACCORDANCE WITH ECN	EFFECTIVE DATE	REVISED BY	DATE	REFERENCE MODEL	REF REV	
DRW BY:	JDW	DRAWING STATUS: <b>Released</b>			TOLERANCES DO NOT APPLY DIMENSIONS ARE NOMINAL		SIZE D
DATE:	06/30/14	PRODUCTION APPROVED FOR RELEASED STATUS ONLY			ILCI406210IPS		REV C