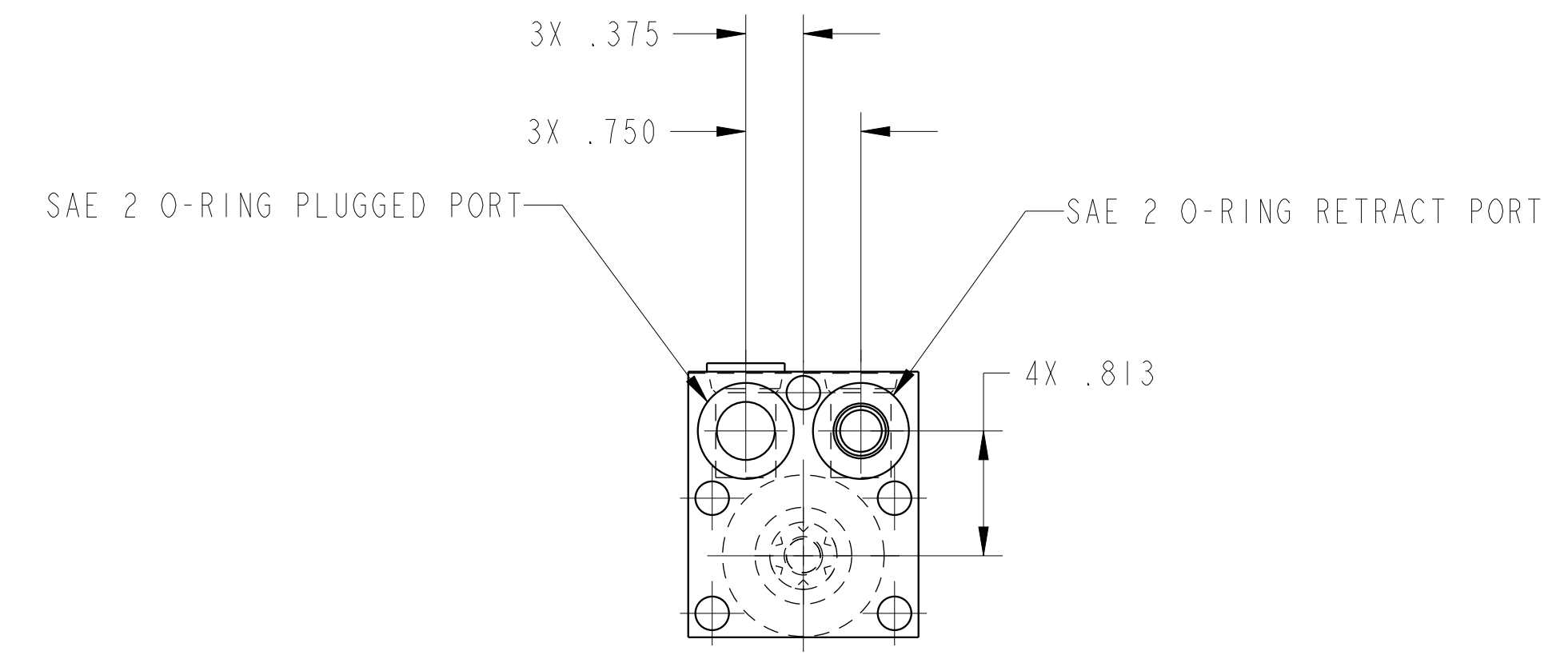
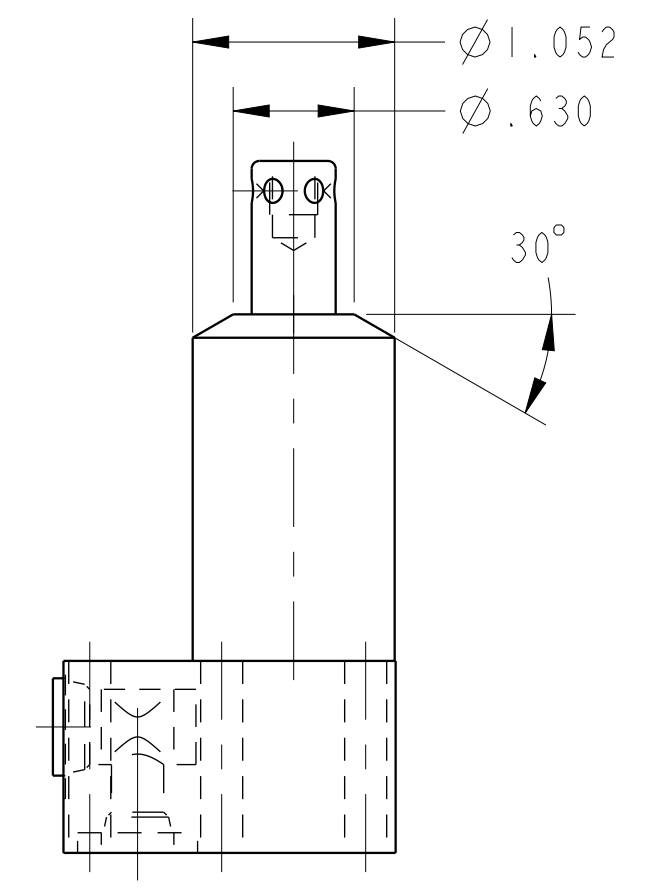
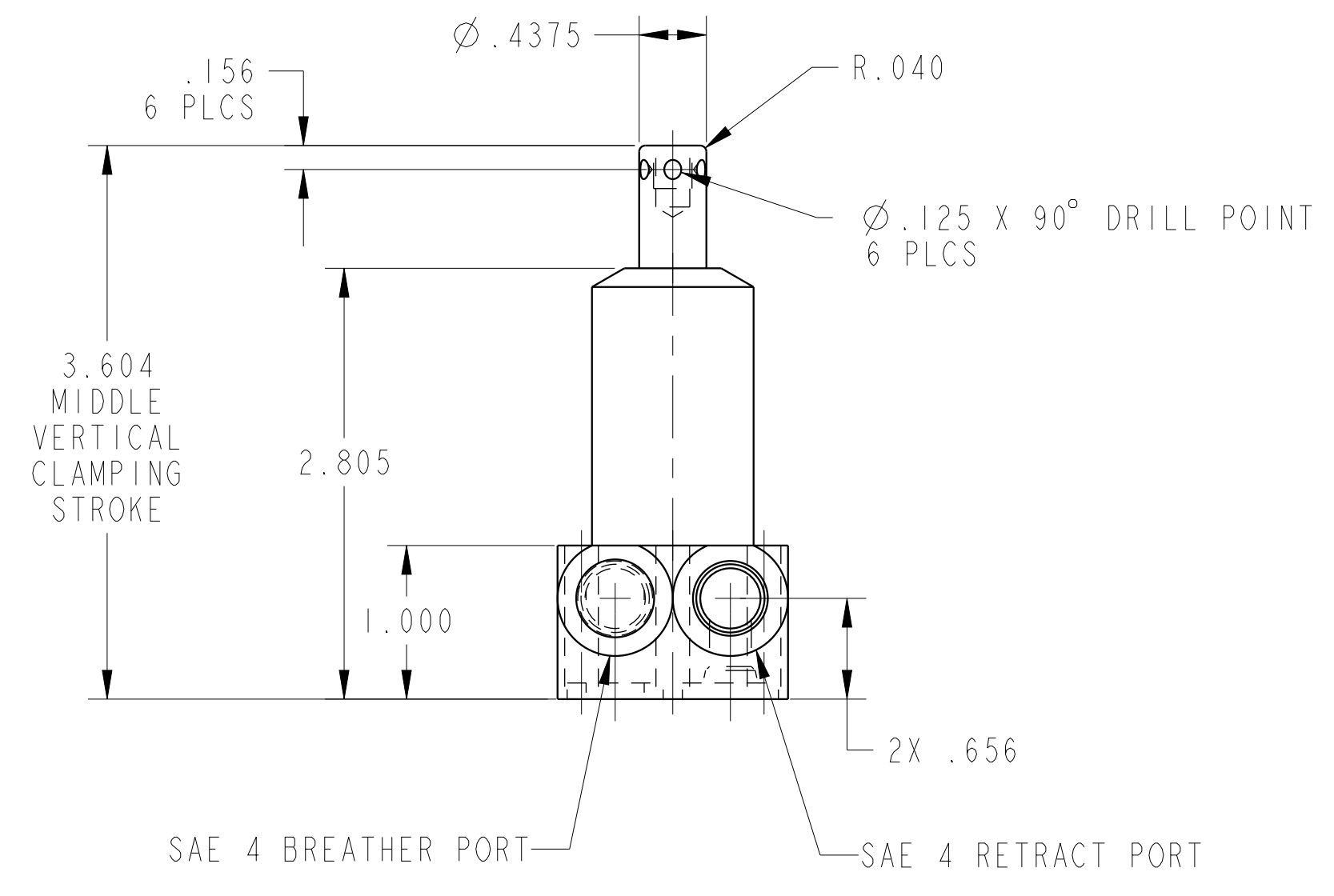



ILCI4210501R REV D ECN 3489
SCALE 1.000



CAD CONTROL DRAWING		
	VEKTEK, INC. 1334 E. SIXTH AVE. P.O. BOX 625 EMPORIA, KS. 66801 U.S.A.	

D	3489	RELEASE	ATHOMSEN	11-JUN-2018	14210501R	D	SC, BF, SA, HS, RH, 450
REV	IN ACCORDANCE WITH ECN	EFFECTIVE DATE	REVISED BY	DATE	REFERENCE MODEL	REF REV	***
DRW BY:	K. ROEMER	DRAWING STATUS: Released			TOLERANCES DO NOT APPLY		SIZE
DATE:	02-09-05	PRODUCTION APPROVED FOR RELEASED STATUS ONLY			DIMENSIONS ARE NOMINAL		D
					I L C I 4 2 1 0 5 0 1 R		REV
					D		D