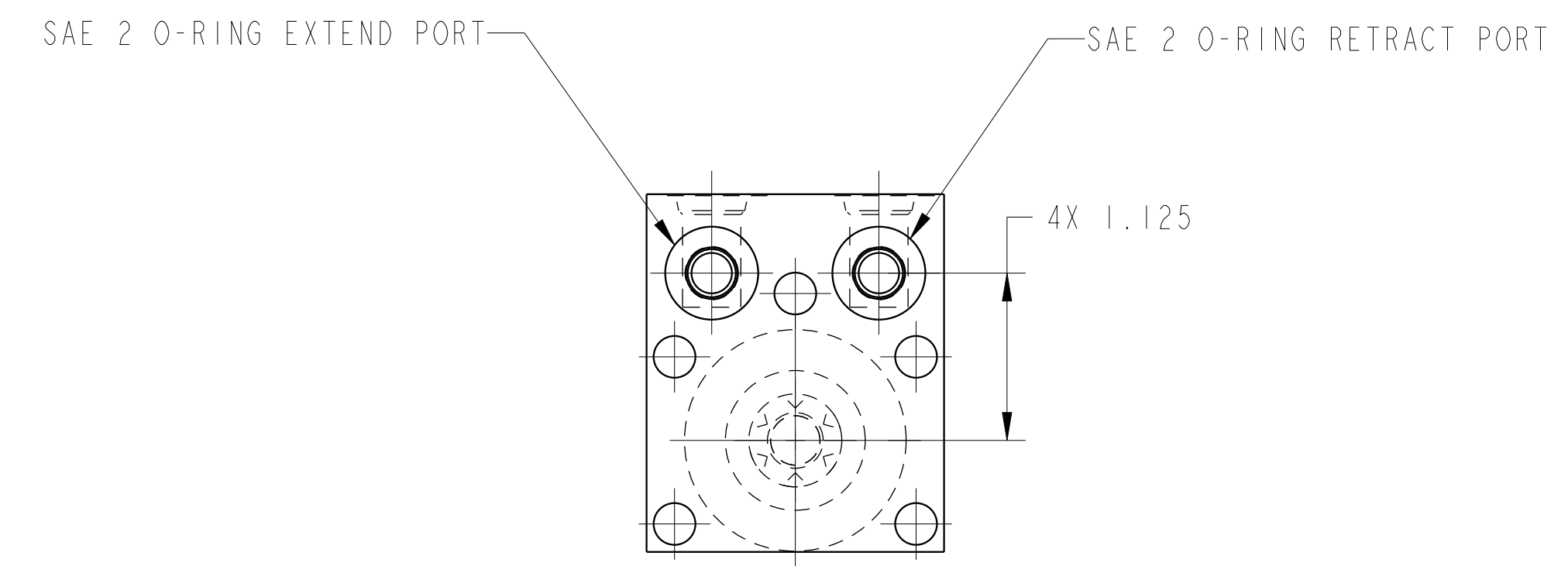
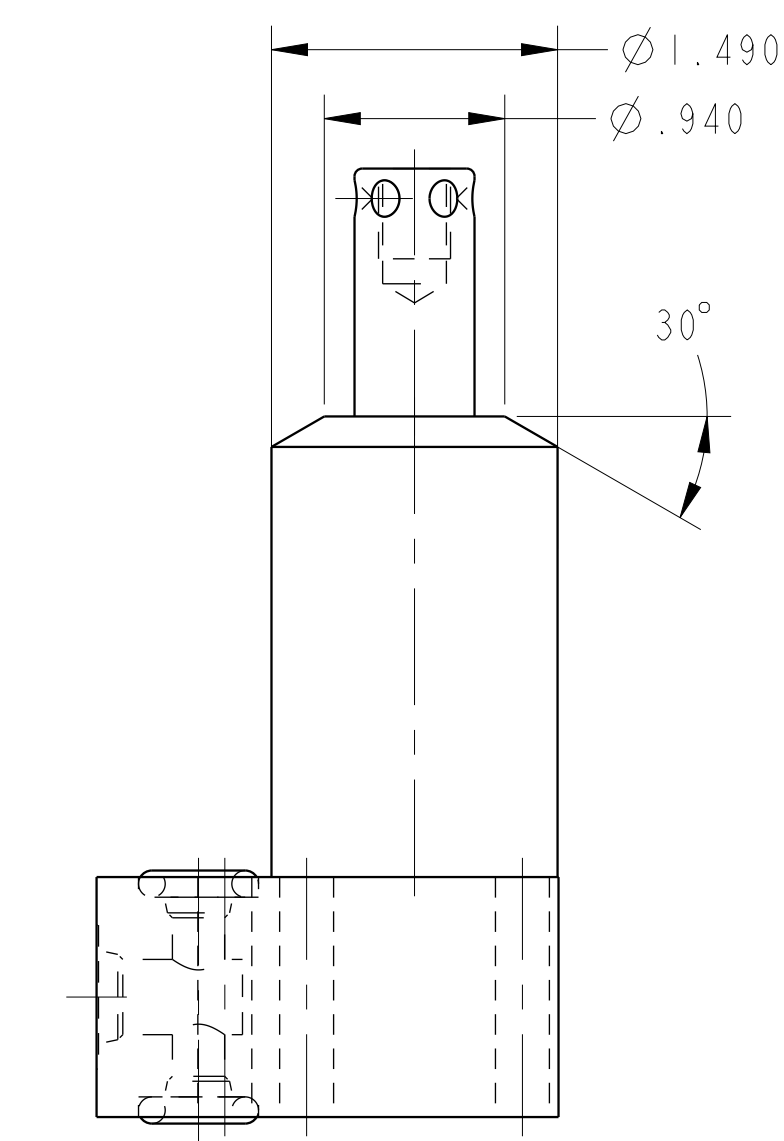
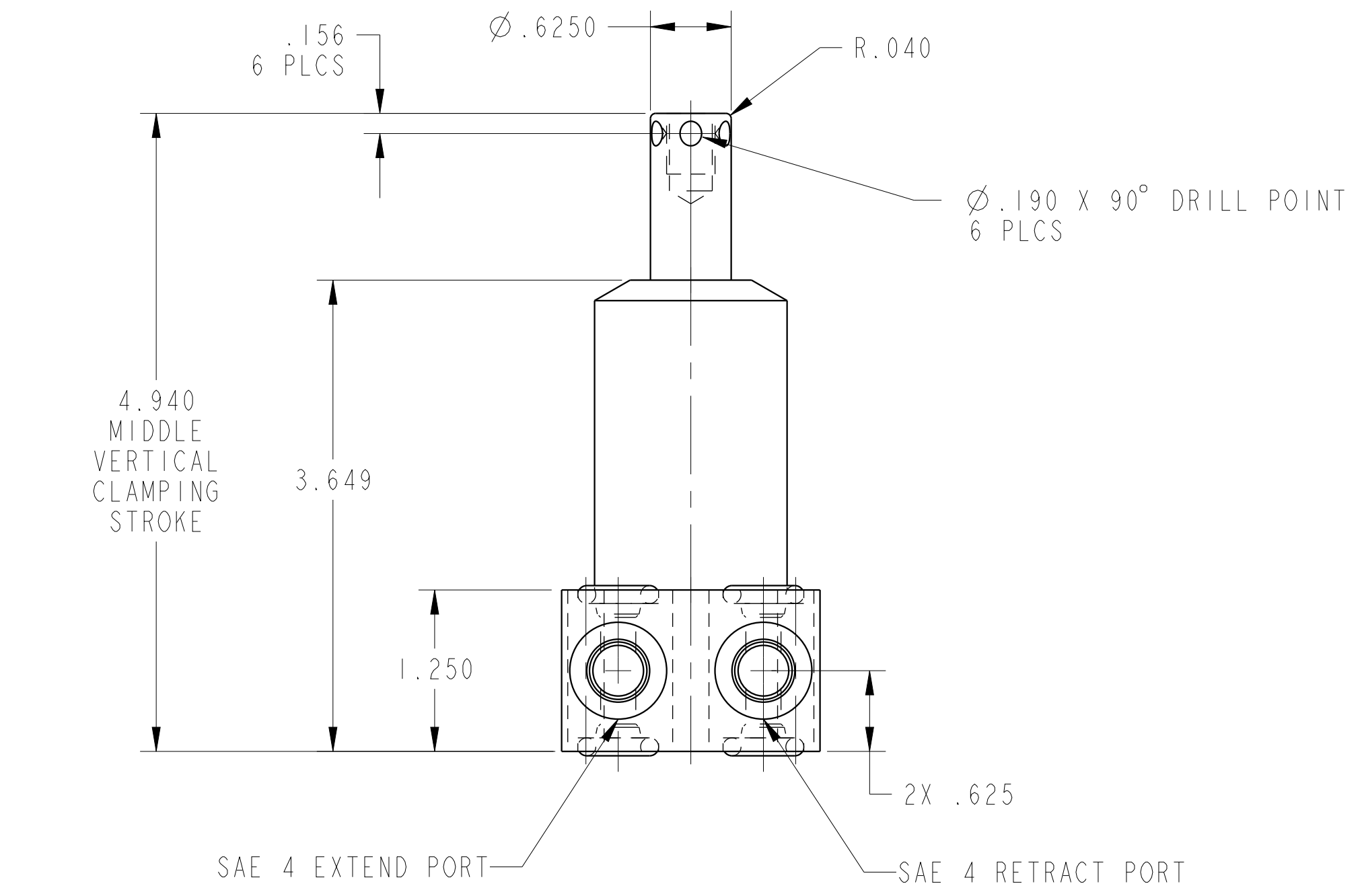


ILC14220901S REV B ECN 3502  
SCALE 1.000



CAD CONTROL DRAWING		
	VEKTEK, INC. 1334 E. SIXTH AVE. P.O. BOX 625 EMPORIA, KS. 66801 U.S.A.	

B	3502	RELEASE	ATHOMSEN	12-JUN-2018	14220901S	A	SC, BF, DA, HS, STR, 1100
REV	IN ACCORDANCE WITH ECN	EFFECTIVE DATE	REVISED BY	DATE	REFERENCE MODEL	REF REV	
DRW BY:	DRAWING STATUS: <b>Released</b>				TOLERANCES DO NOT APPLY		SIZE
DATE:	PRODUCTION APPROVED FOR RELEASED STATUS ONLY				DIMENSIONS ARE NOMINAL		D
	01/30/18						ILC14220901S REV B