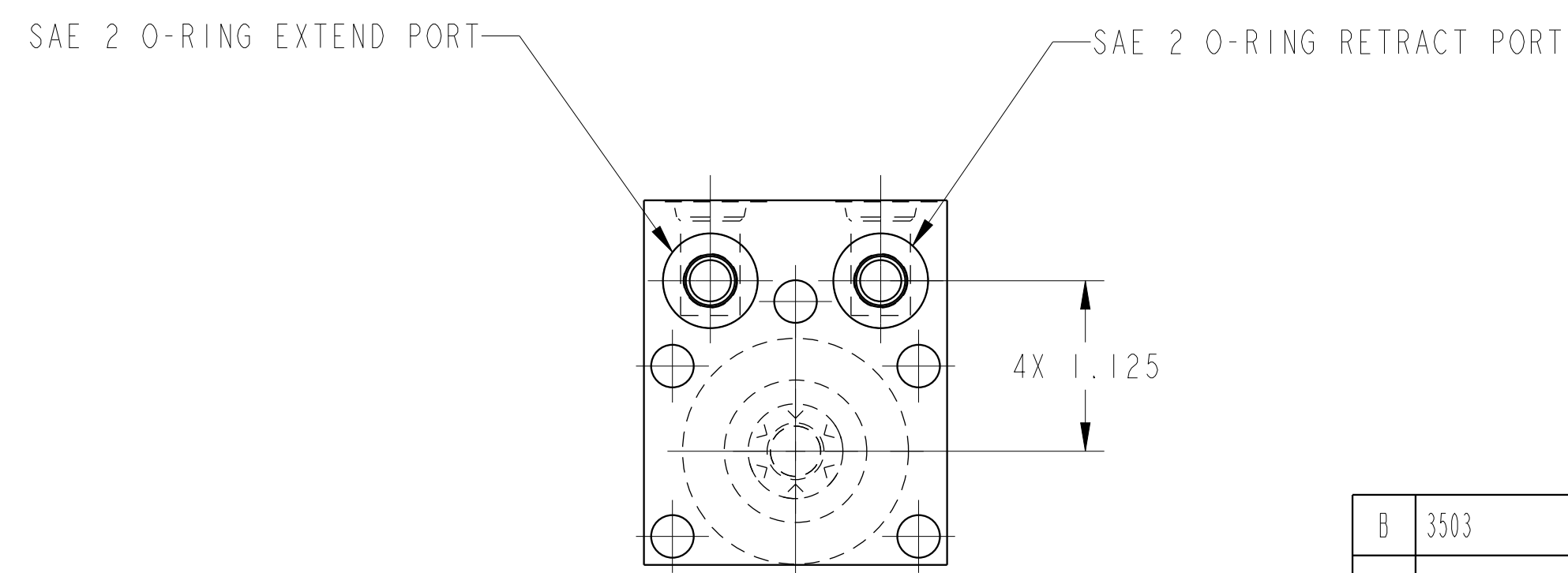
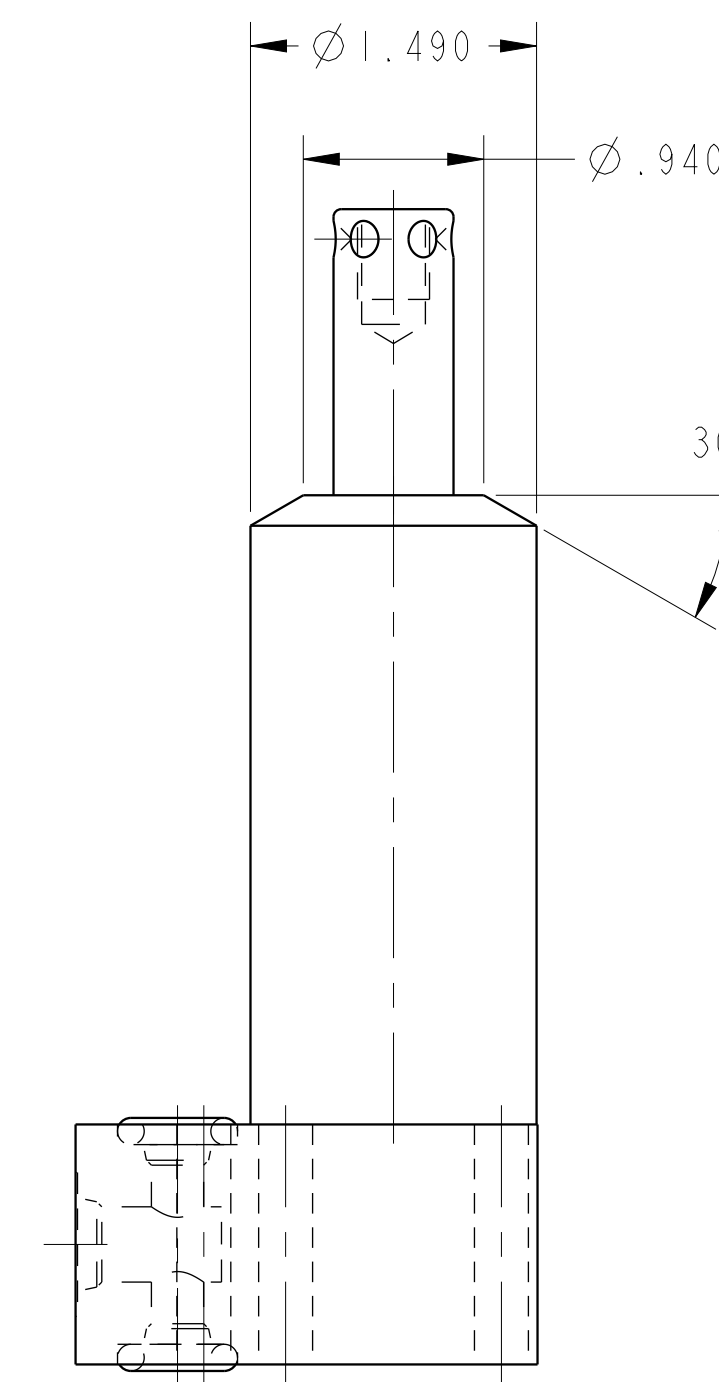
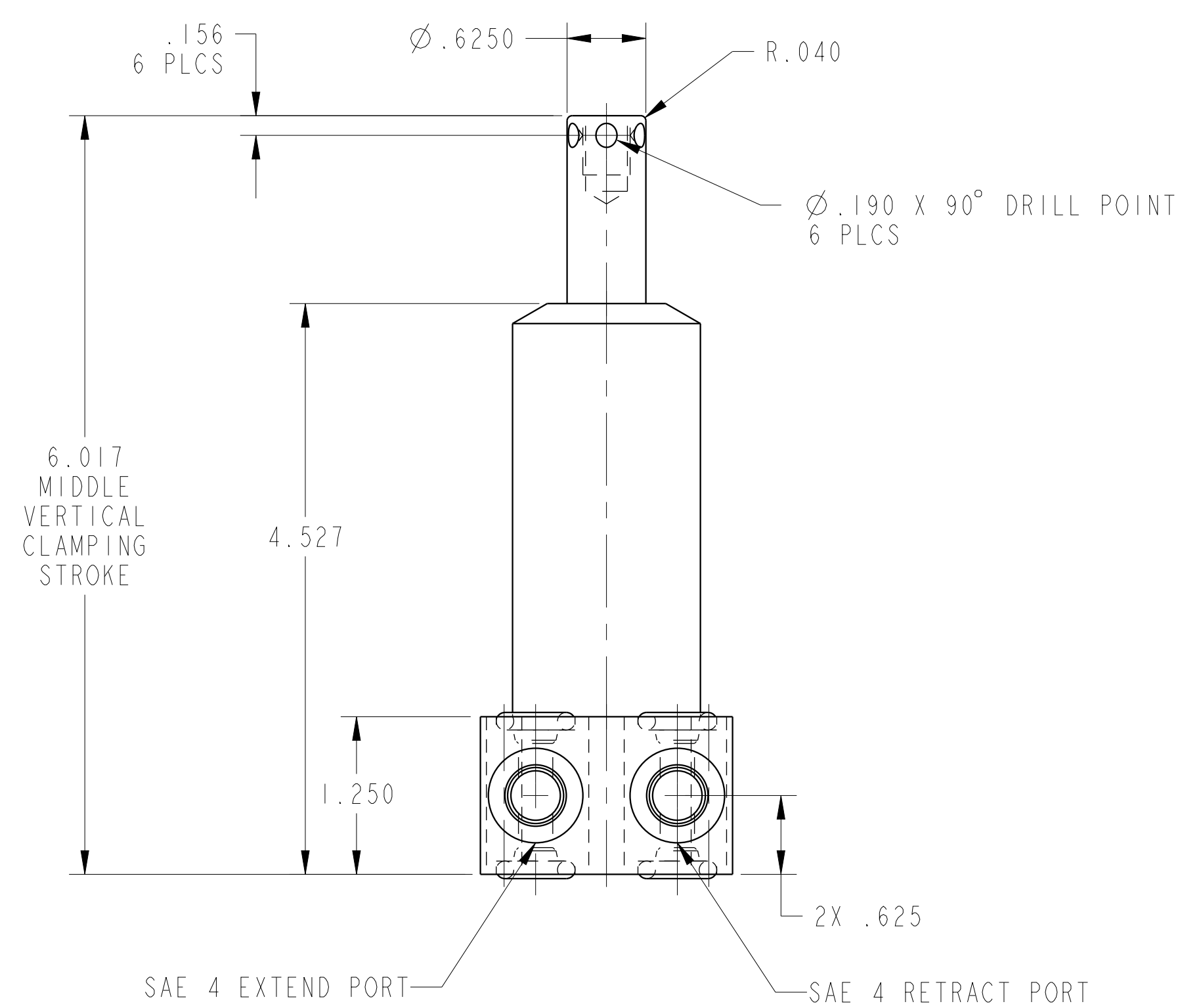
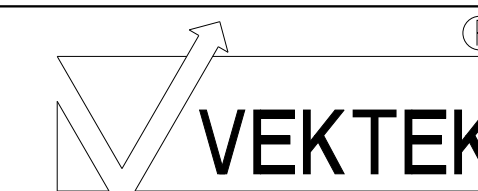


ILC14220910S REV B ECN 3503



CAD CONTROL DRAWING



VEKTEK, INC.  
1334 E. SIXTH AVE. P.O. BOX 625  
EMPORIA, KS. 66801 U.S.A.

B	3503	RELEASE	ATHOMSEN	13-JUN-2018
REV	IN ACCORDANCE WITH ECN	EFFECTIVE DATE	REVISED BY	DATE
DRW BY:	DRAWING STATUS: <b>Released</b>			
DATE:	PRODUCTION APPROVED FOR RELEASED STATUS ONLY			

14220910S	A
REFERENCE MODEL	REF REV
TOLERANCES DO NOT APPLY DIMENSIONS ARE NOMINAL	

SC, HS, BF, 1100, LS, DA, STR
SIZE D
ILC14220910S
REV B