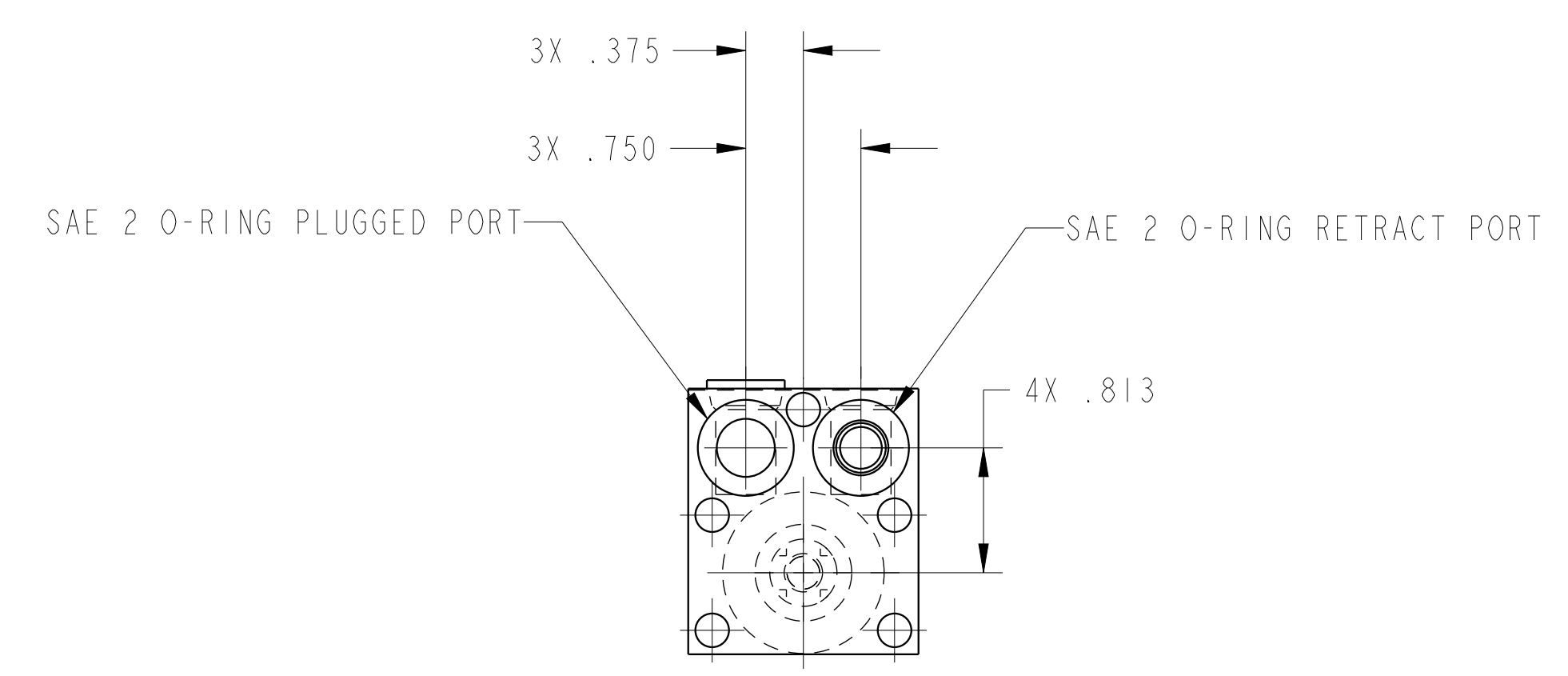
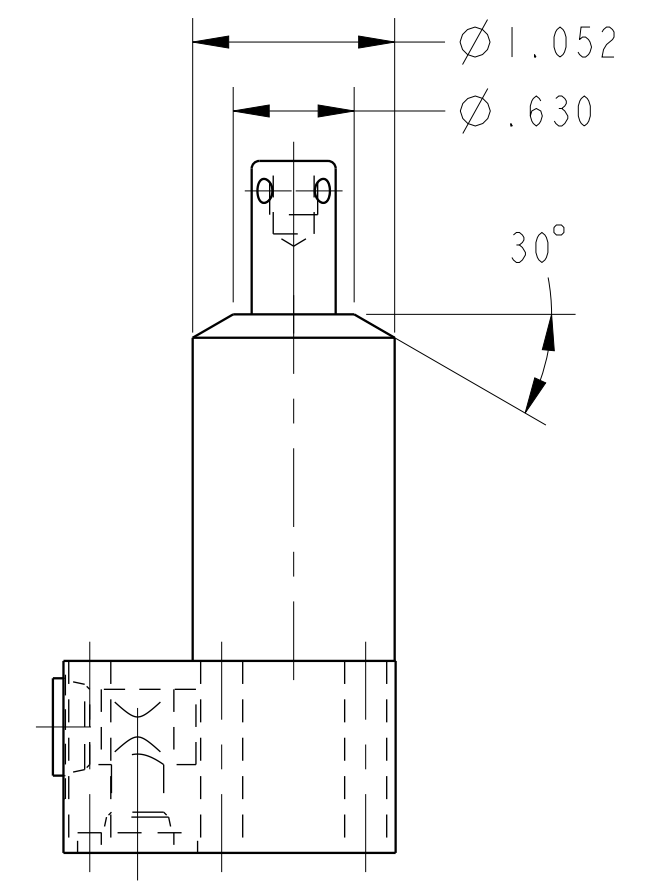
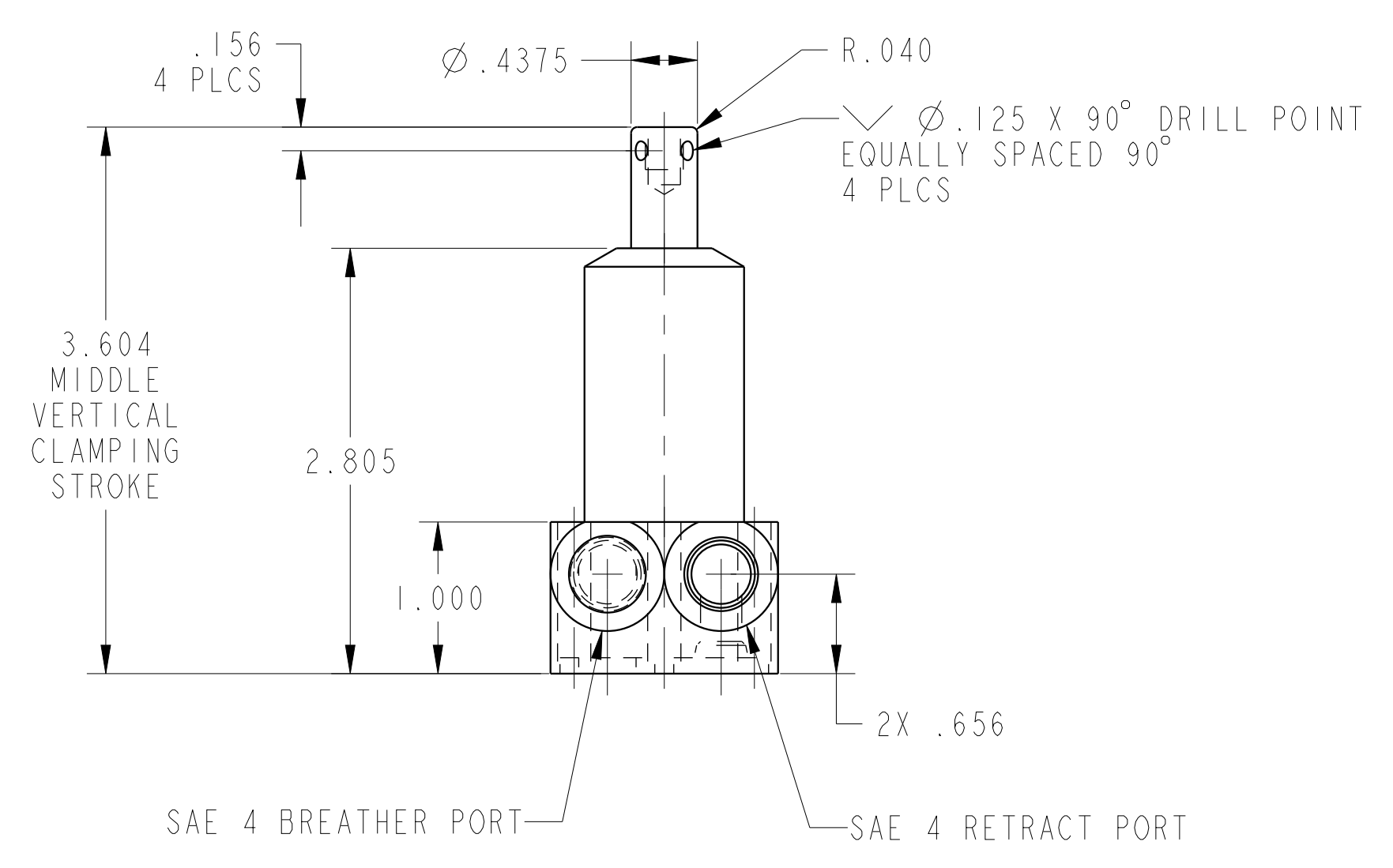



ILC15210503L REV B ECN 5049
SCALE 1.000



CAD CONTROL DRAWING		
	VEKTEK, INC. 1334 E. SIXTH AVE. P.O. BOX 625 EMPORIA, KS. 66801 U.S.A.	

B	5049	RELEASE	JDW	03/06/23
REV	IN ACCORDANCE WITH ECN	EFFECTIVE DATE	REVISED BY	DATE
DRW BY:	RLK	DRAWING STATUS: Released		
DATE:	1/22/22	PRODUCTION APPROVED FOR RELEASED STATUS ONLY		

15210503L	A	SC, BF, 450, SA, LH
REFERENCE MODEL	REF REV	***
TOLERANCES DO NOT APPLY DIMENSIONS ARE NOMINAL		SIZE D
ILC15210503L		REV B