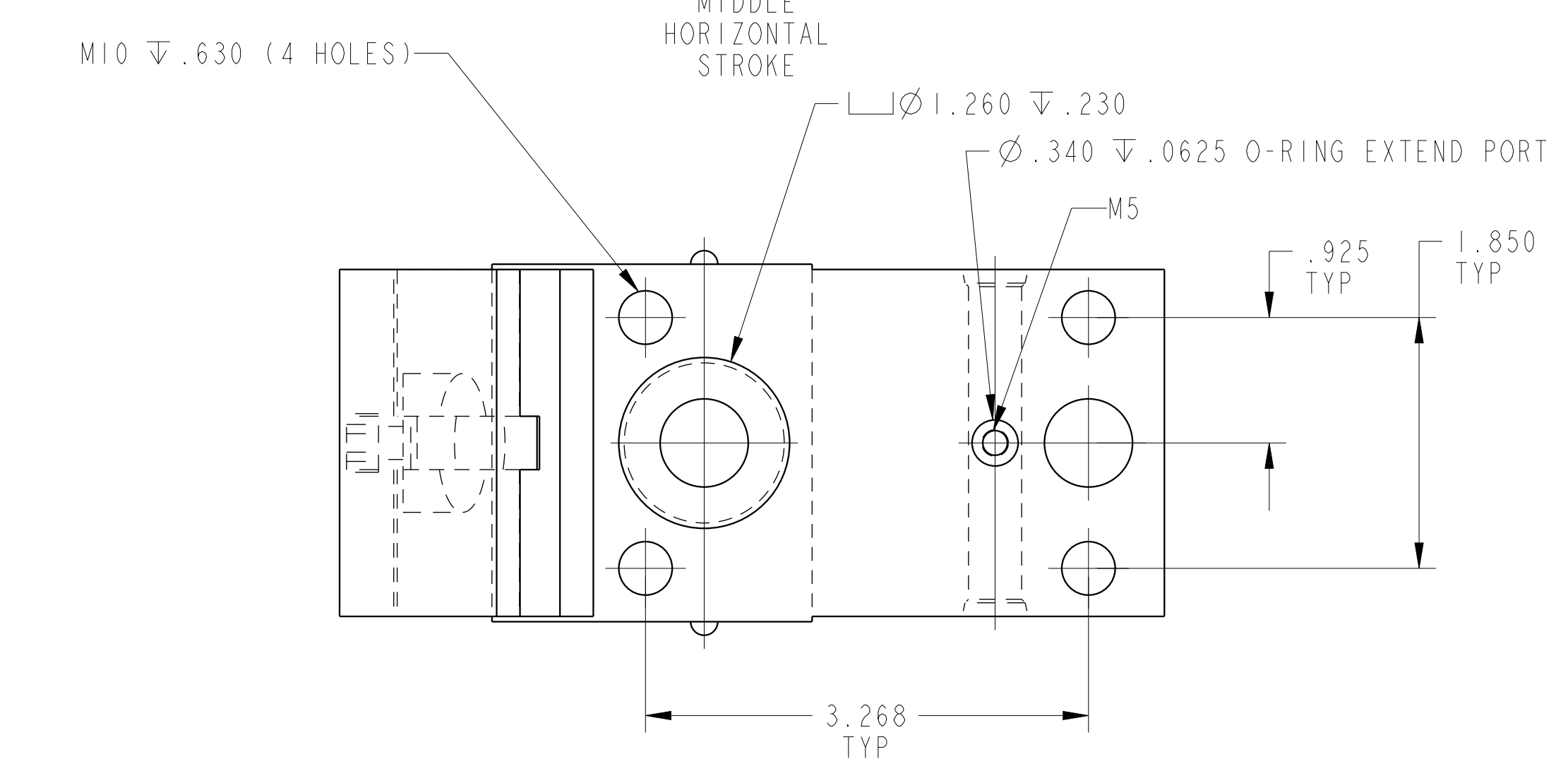
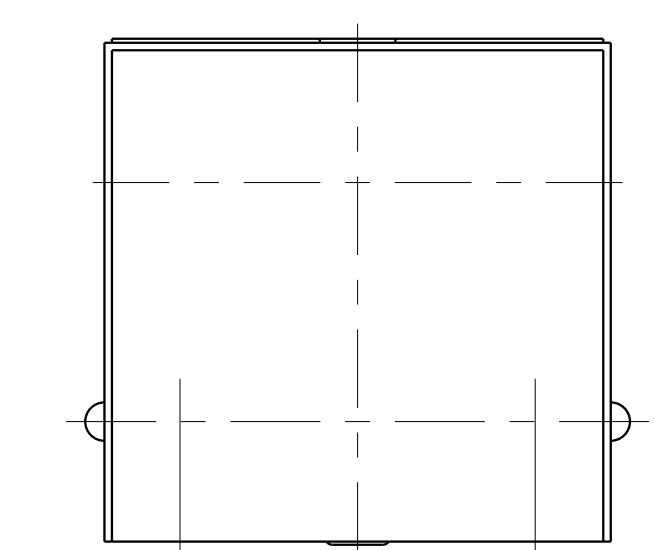
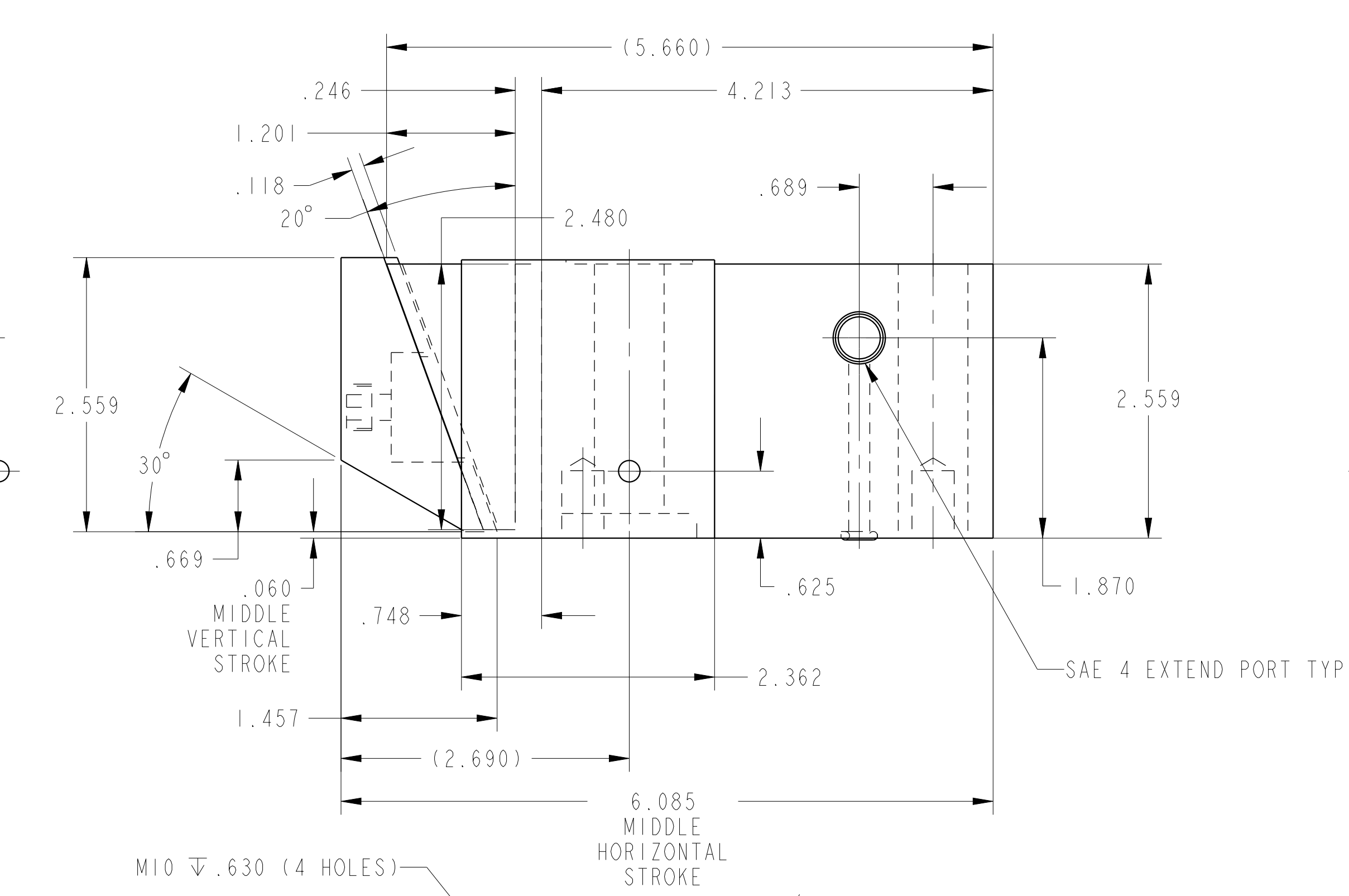
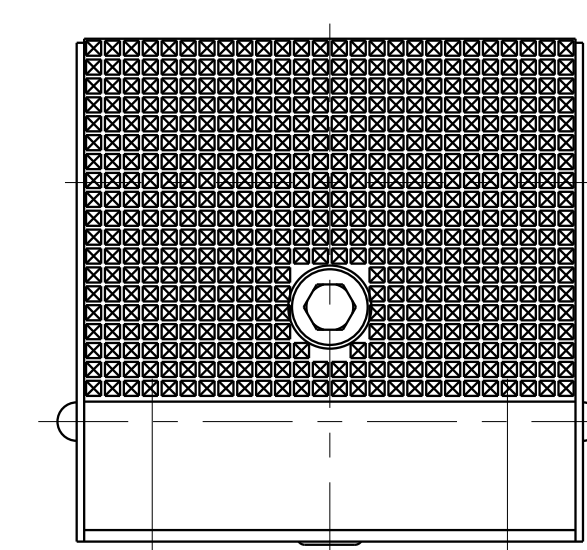


ILC15311200 REV C ECN 5286



CAD CONTROL DRAWING		
	VEKTEK, INC. 1334 E. SIXTH AVE. P.O. BOX 625 EMPORIA, KS. 66801 U.S.A.	

C	5286	RELEASE	RLK	4/17/24
REV	IN ACCORDANCE WITH ECN	EFFECTIVE DATE	REVISED BY	DATE
DRW BY:	DRAWING STATUS: Released			
DATE:	PRODUCTION APPROVED FOR RELEASED STATUS ONLY			

15311200	L	CLAMP, PL-DN, MM, SA, SRJ, 2100
REFERENCE MODEL	REF REV	---
TOLERANCES DO NOT APPLY		SIZE
DIMENSIONS ARE NOMINAL		D ILC15311200
		REV C