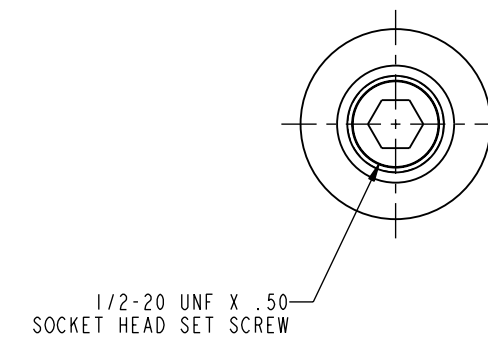
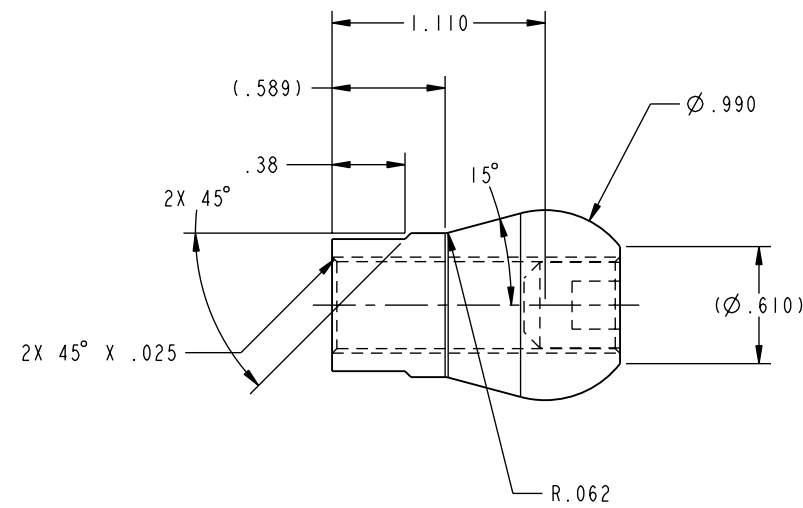
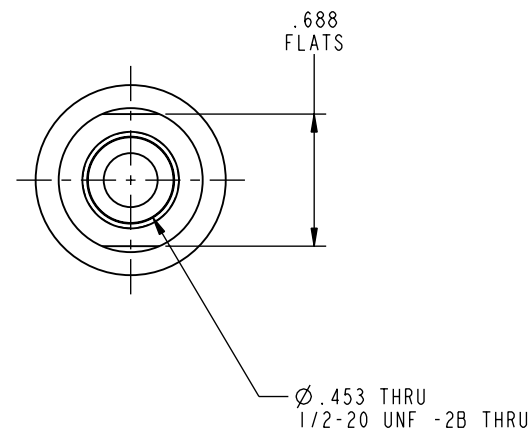


ILC15801003 REV A ECN 2442



CAD CONTROL  
DRAWING



VEKTEK, INC.  
1334 E. SIXTH AVE. P.O. BOX 625  
EMPORIA, KS. 66801 U.S.A.

A	2442	RELEASE	K. ROEMER	12/05/12	15801003	A	HEAD, CLUB, PIN, 600
REV	IN ACCORDANCE WITH ECN	EFFECTIVE DATE	REVISED BY	DATE	REFERENCE MODEL	REF REV	*****
DRW BY:	K. ROEMER	DRAWING STATUS: <b>Released</b>			TOLERANCES DO NOT APPLY DIMENSIONS ARE NOMINAL		SIZE B
DATE:	07/16/12	PRODUCTION APPROVED FOR RELEASED STATUS ONLY			FORM FEG036, Rev. A		ILC15801003 REV A

SHEET 1 OF 1