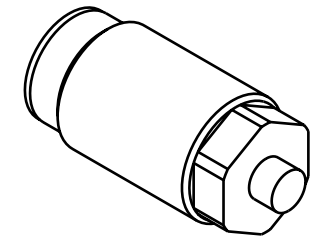
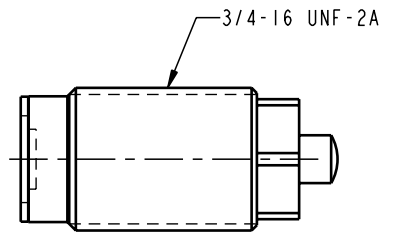


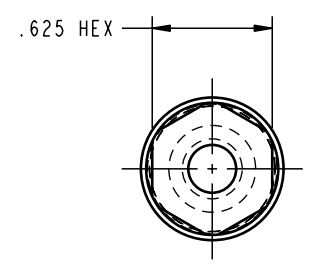
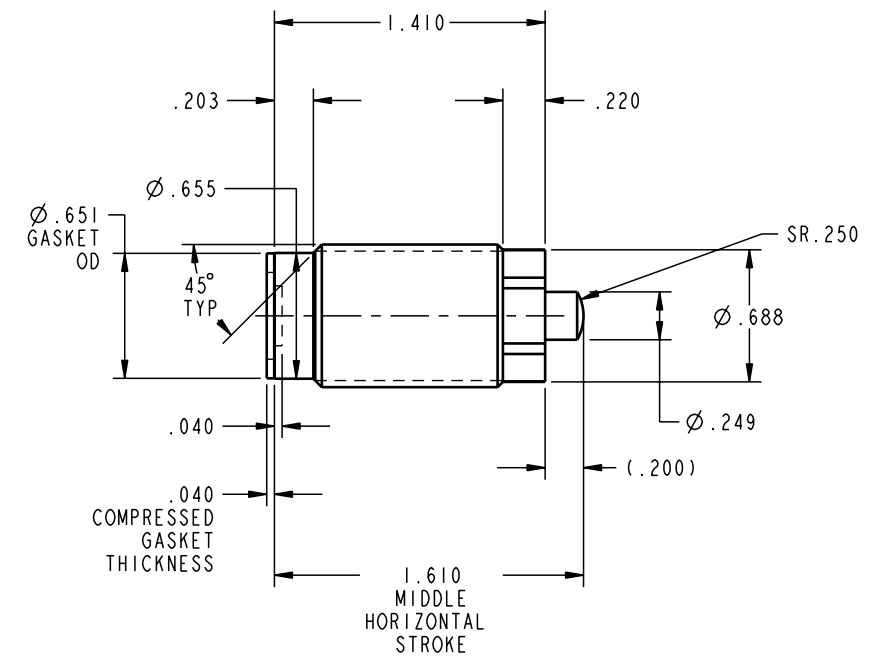
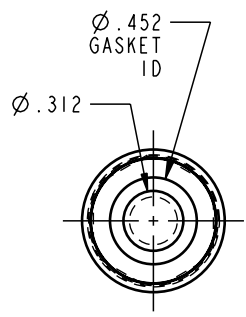
1 2 3 4

D
C
B
A

D
C
B
A



ILC21010503 REV A ECN 1297



CAD CONTROL DRAWING			
		VEKTEK, INC. 1334 E. SIXTH AVE. P.O. BOX 625 EMPORIA, KS. 66801 U.S.A.	

A	1297	RELEASE	K. ROEMER	04-22-05	21010503	V	CYL, MINI, CM, 980, .25 STRK
REV	IN ACCORDANCE WITH ECN	EFFECTIVE DATE	REVISED BY	DATE	REFERENCE MODEL	REF REV	
DRW BY:	K. ROEMER	DRAWING STATUS: Released			TOLERANCES DO NOT APPLY DIMENSIONS ARE NOMINAL		SIZE B
DATE:	04-22-05	PRODUCTION APPROVED FOR RELEASED STATUS ONLY					ILC21010503 REV A

SIZE	B	REV	A
FORM FEG036, Rev. A			

SHEET 1 OF 1

1 2 3 4