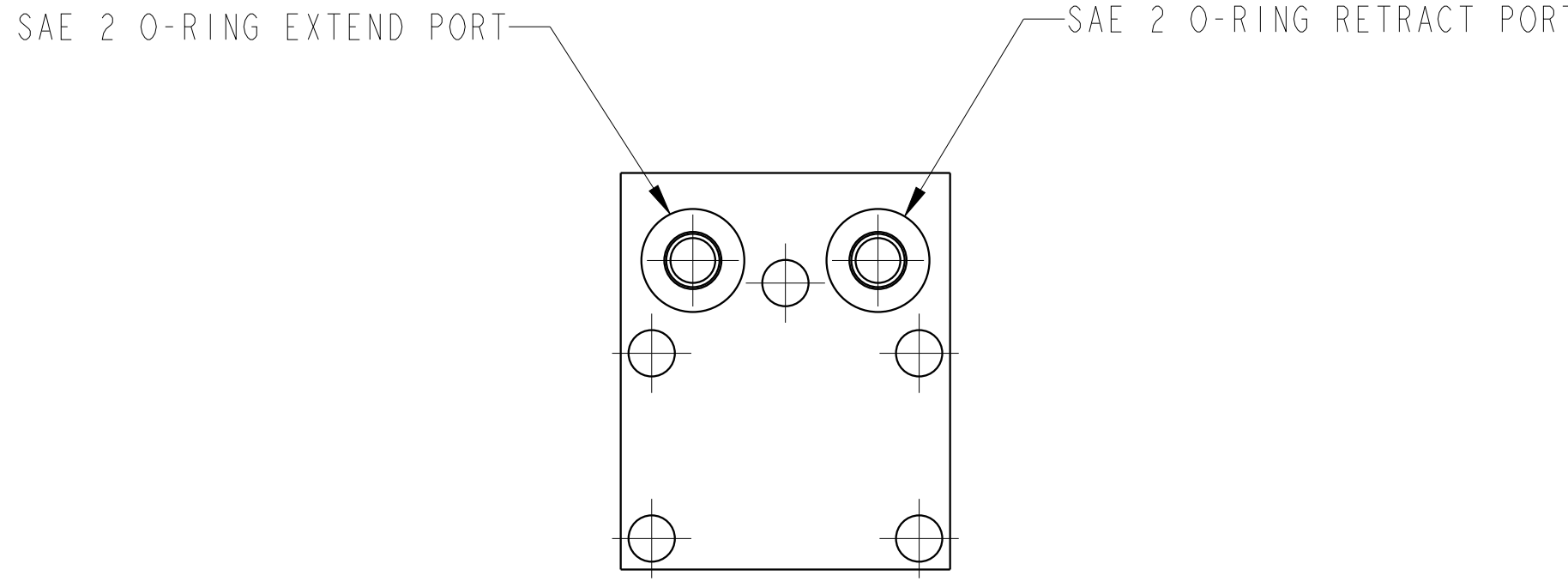
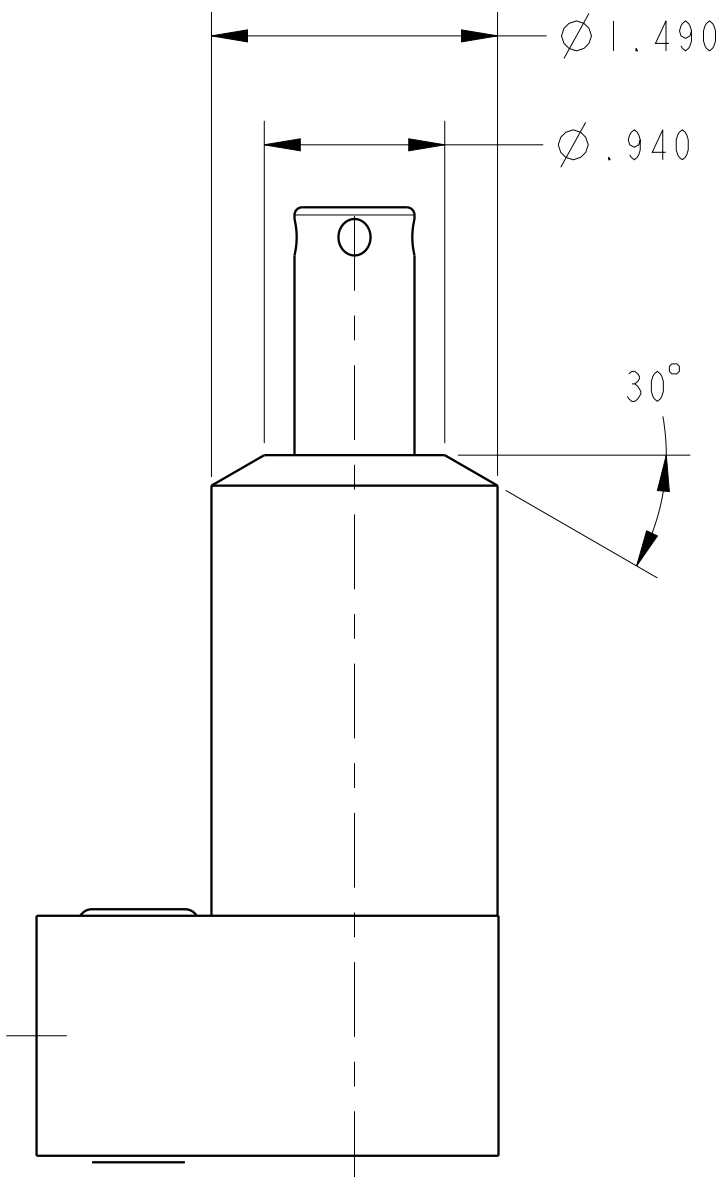
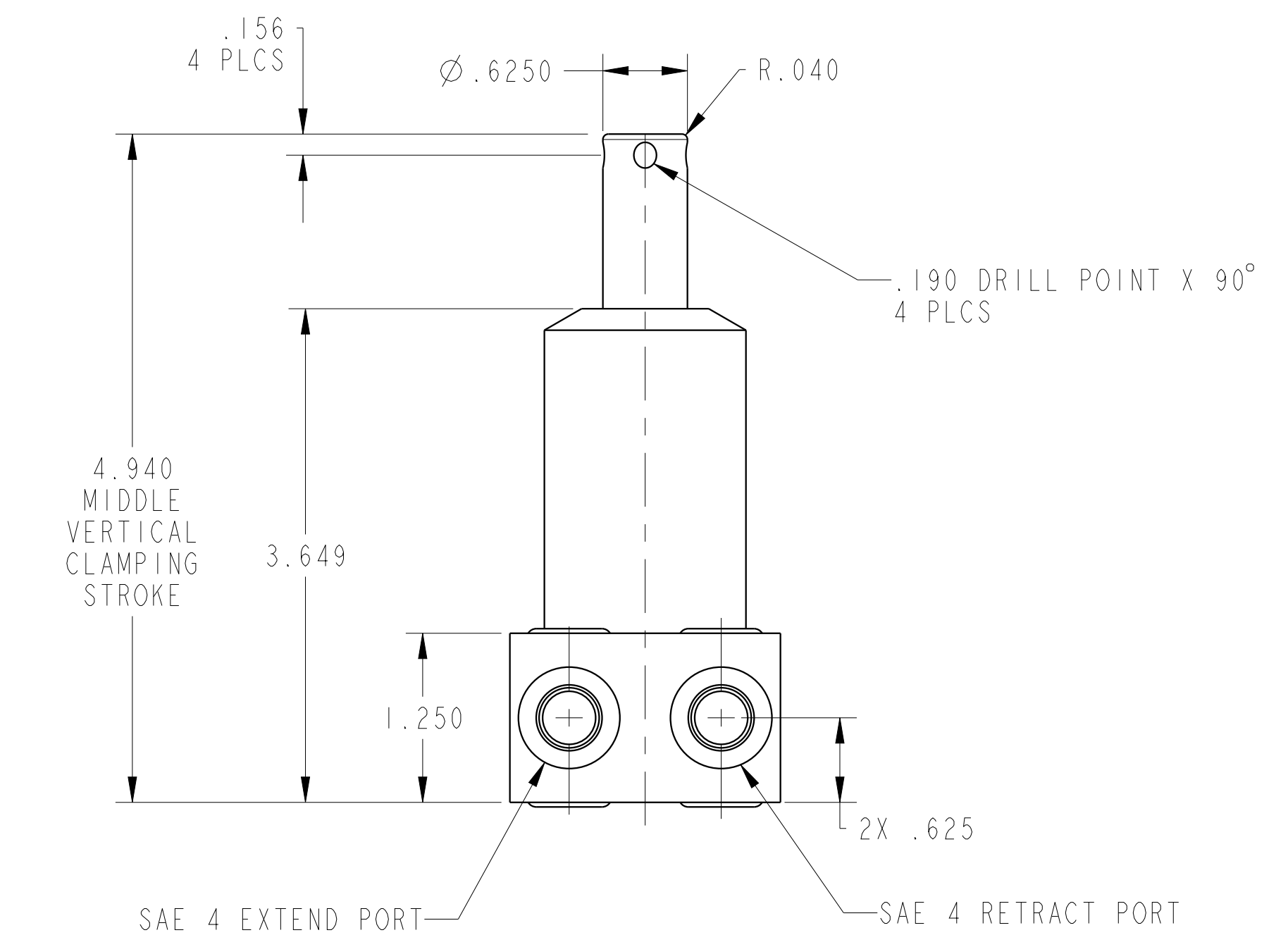



ILC25220902 REV A ECN4448



CAD CONTROL
DRAWING


VEKTEK, INC.
1334 E. SIXTH AVE. P.O. BOX 625
EMPORIA, KS. 66801 U.S.A.

A	4448	RELEASE	ALS	5/18/21	25220902	A	CYL, PP, BF, 3000
REV	IN ACCORDANCE WITH ECN	EFFECTIVE DATE	REVISED BY	DATE	REFERENCE MODEL	REF REV	---
DRAWN BY: ALS					DRAWING STATUS: Released		
DATE: 5/19/21					PRODUCTION APPROVED FOR RELEASED STATUS ONLY		
					TOLERANCES DO NOT APPLY DIMENSIONS ARE NOMINAL		SIZE D
					ILC25220902		REV A

FORM FEG036, Rev. B