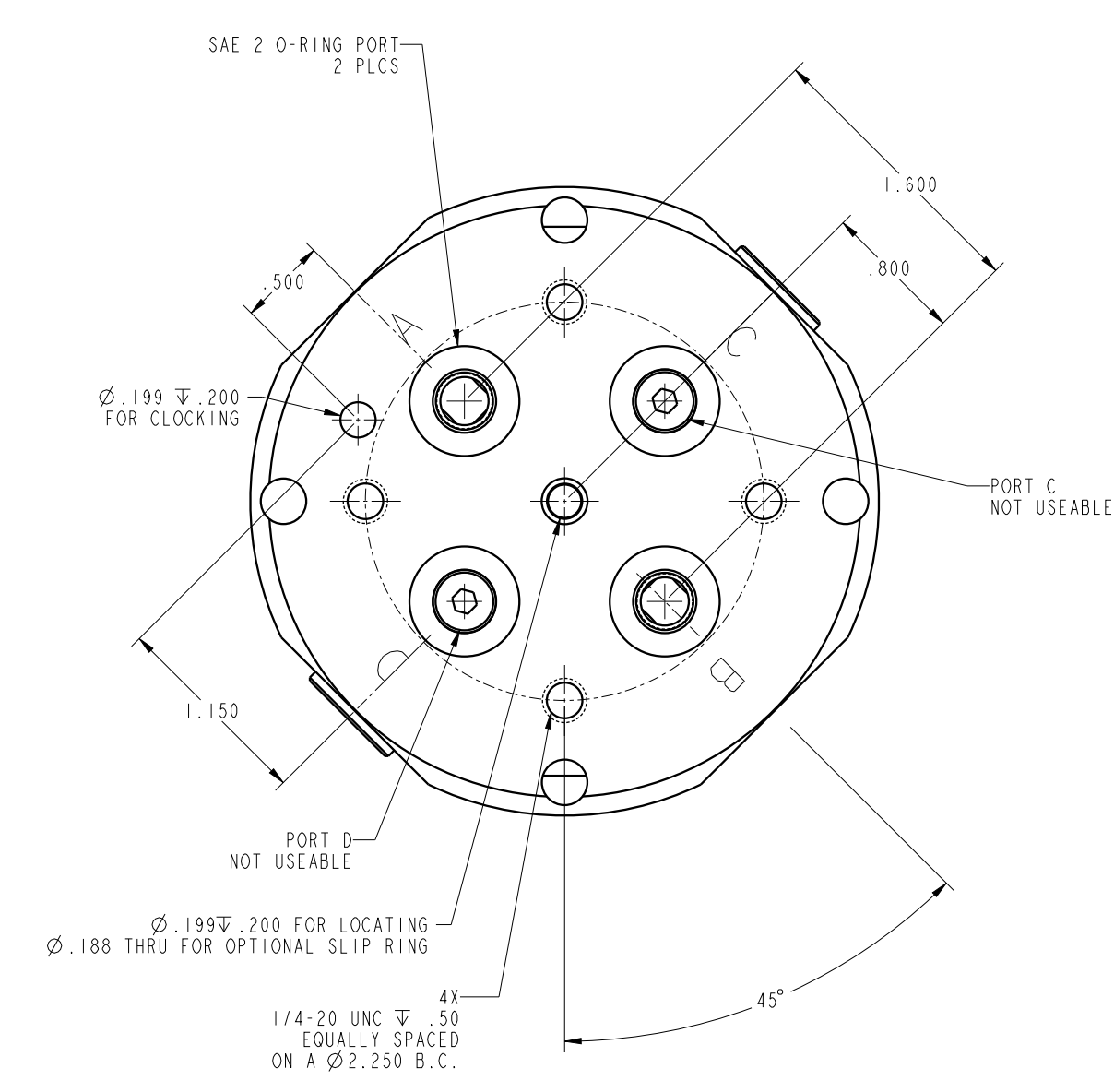
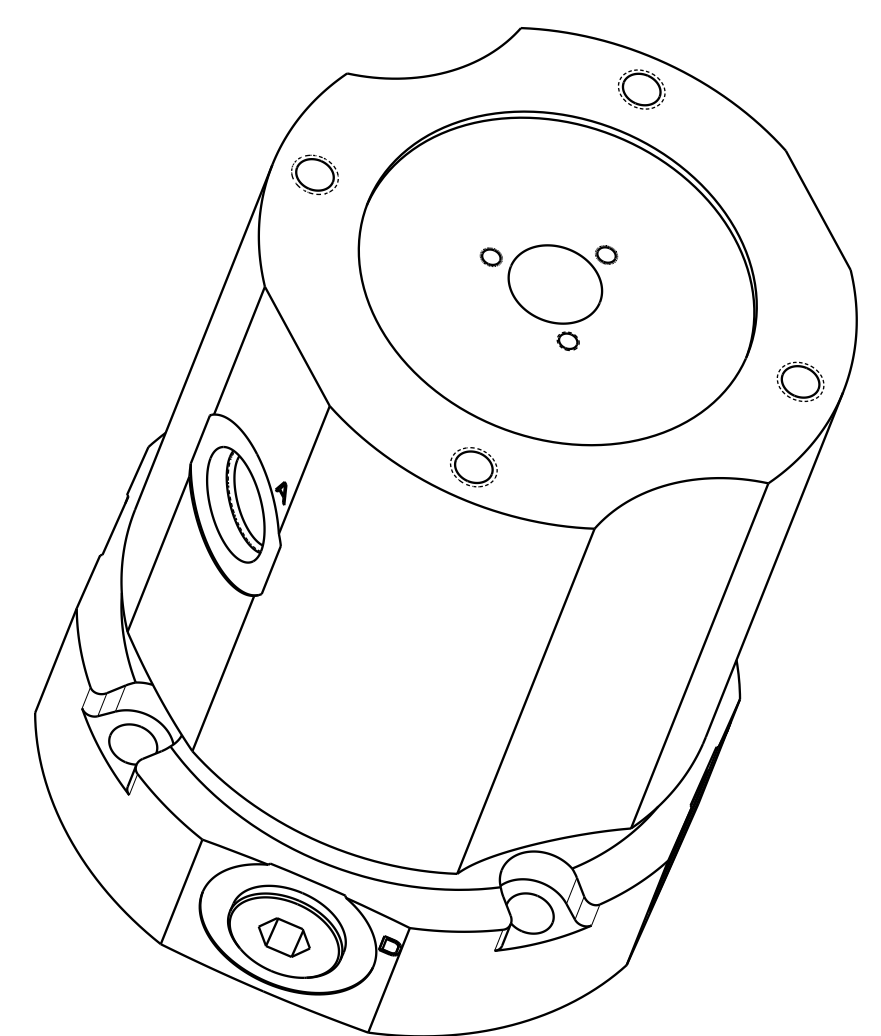
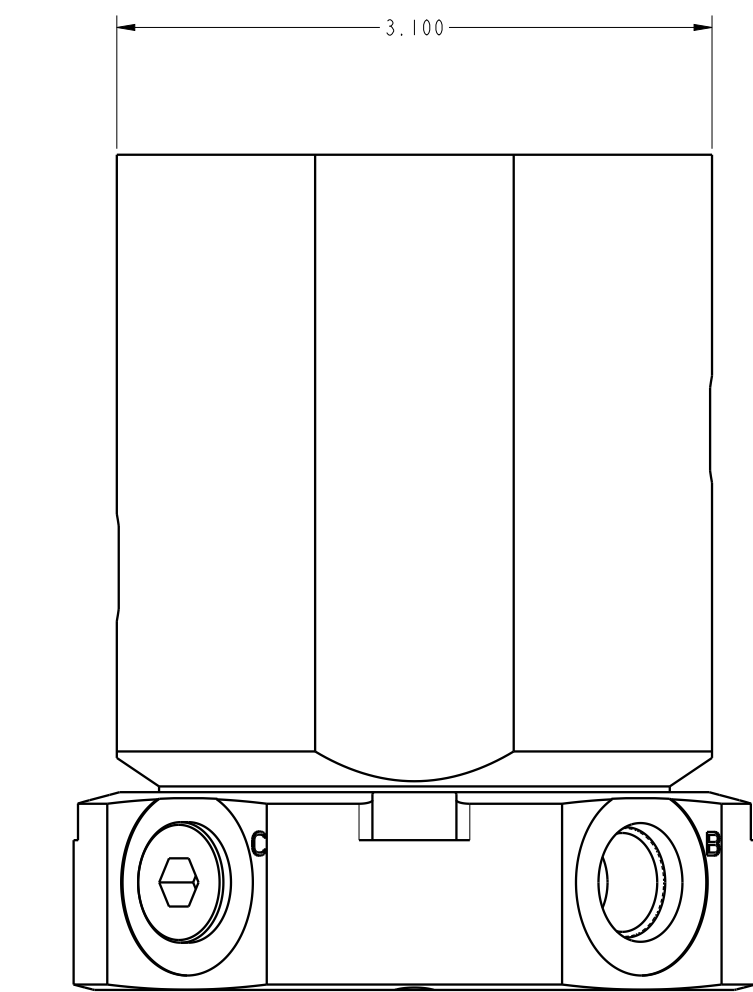
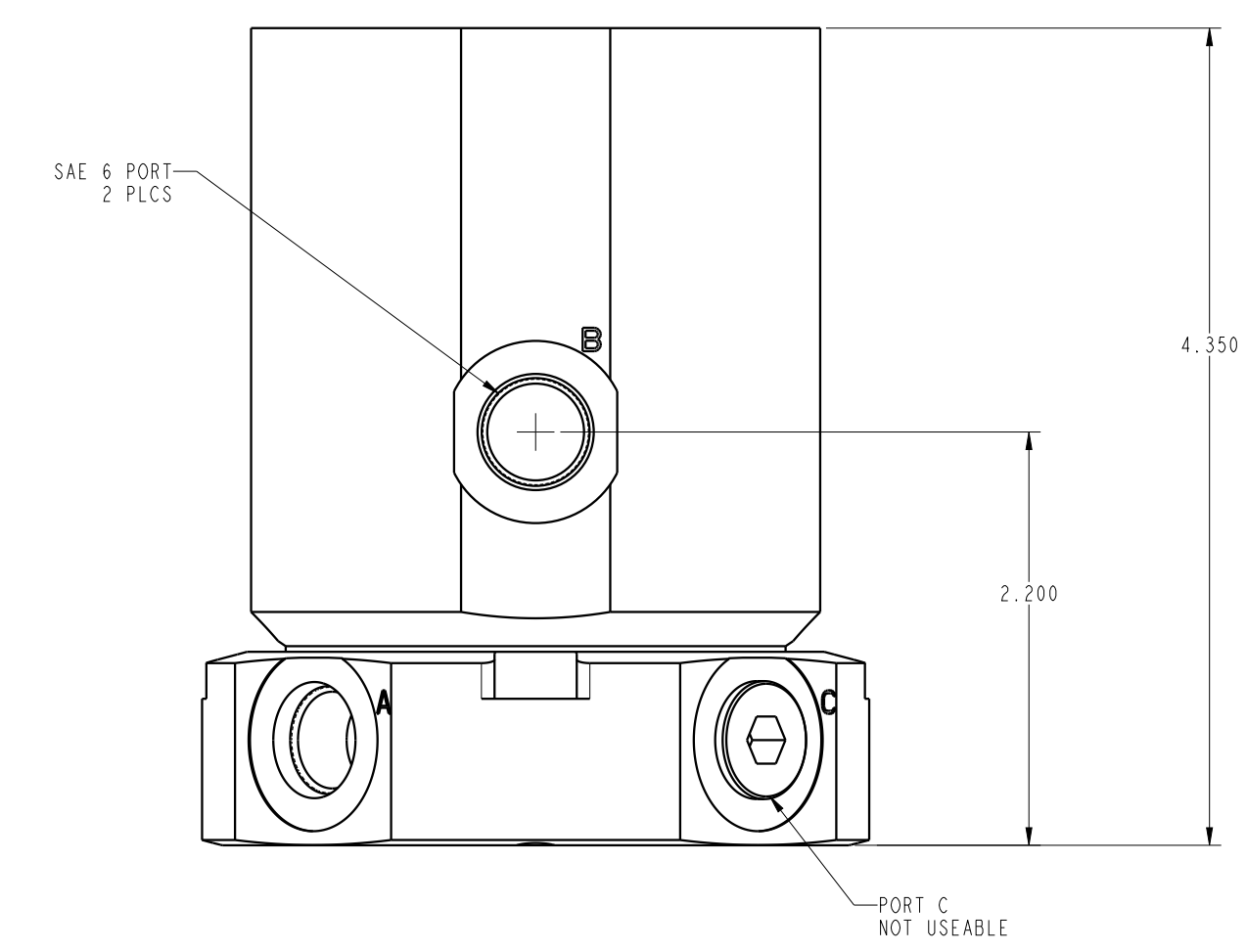
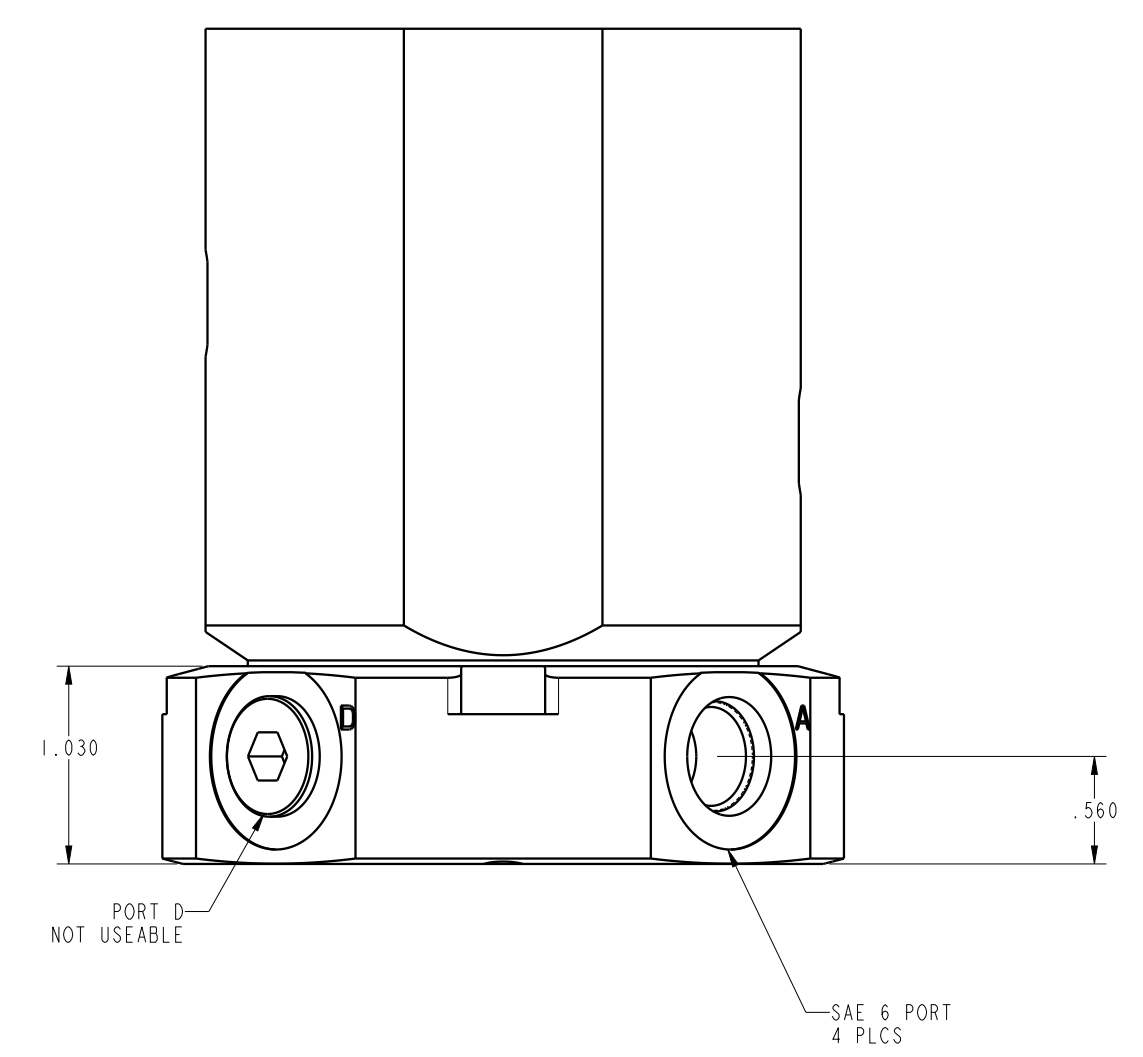
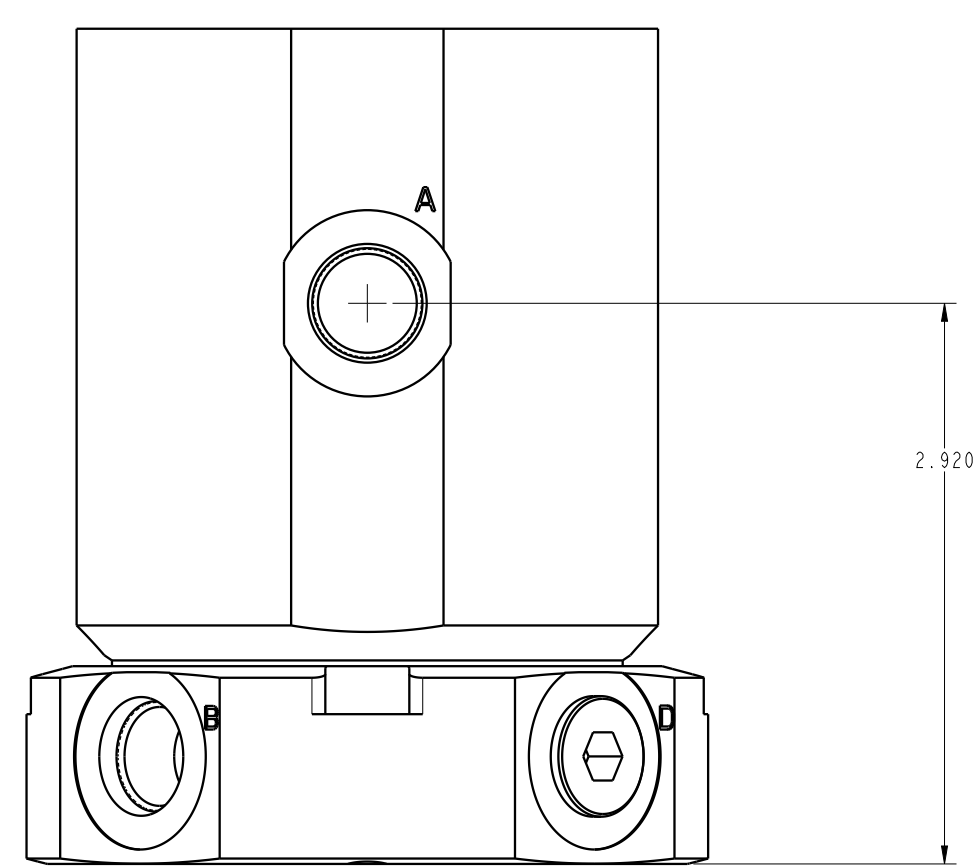
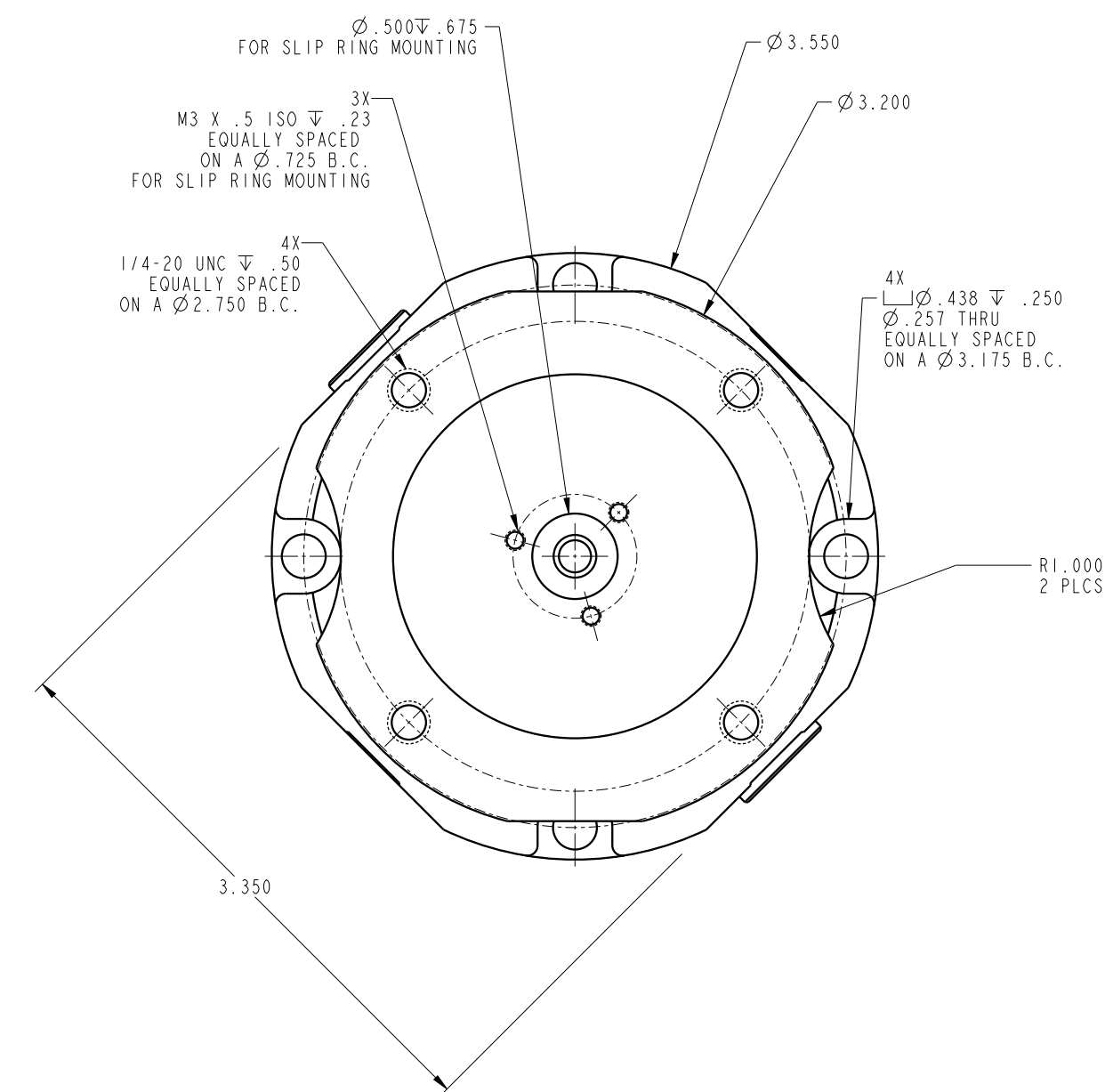


1

2

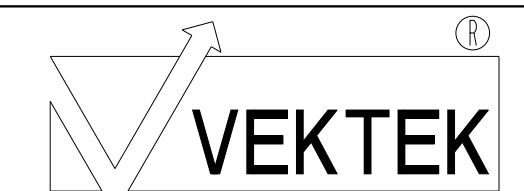
3

4



ILC32226204 REV A ECN 5297

CAD CONTROL DRAWING



VEKTEK, INC.
 1334 E. SIXTH AVE. P.O. BOX 625
 EMPORIA, KS. 66801 U.S.A.

A	5297	RELEASE	NPETERS	4/20/24
REV	IN ACCORDANCE WITH ECN	EFFECTIVE DATE	REVISED BY	DATE
DRW BY:	NPETERS	DRAWING STATUS: Released		
DATE:	4/20/24	PRODUCTION APPROVED FOR RELEASED STATUS ONLY		

32-2262-04	A
REFERENCE MODEL	REF REV
TOLERANCES DO NOT APPLY DIMENSIONS ARE NOMINAL	

ILC, SUPER UNION, DP, SAE 6
SIZE D
ILC32226204
REV A

1

2

3

4

SHEET 1 OF 1