

1

2

3

4

D

D

C

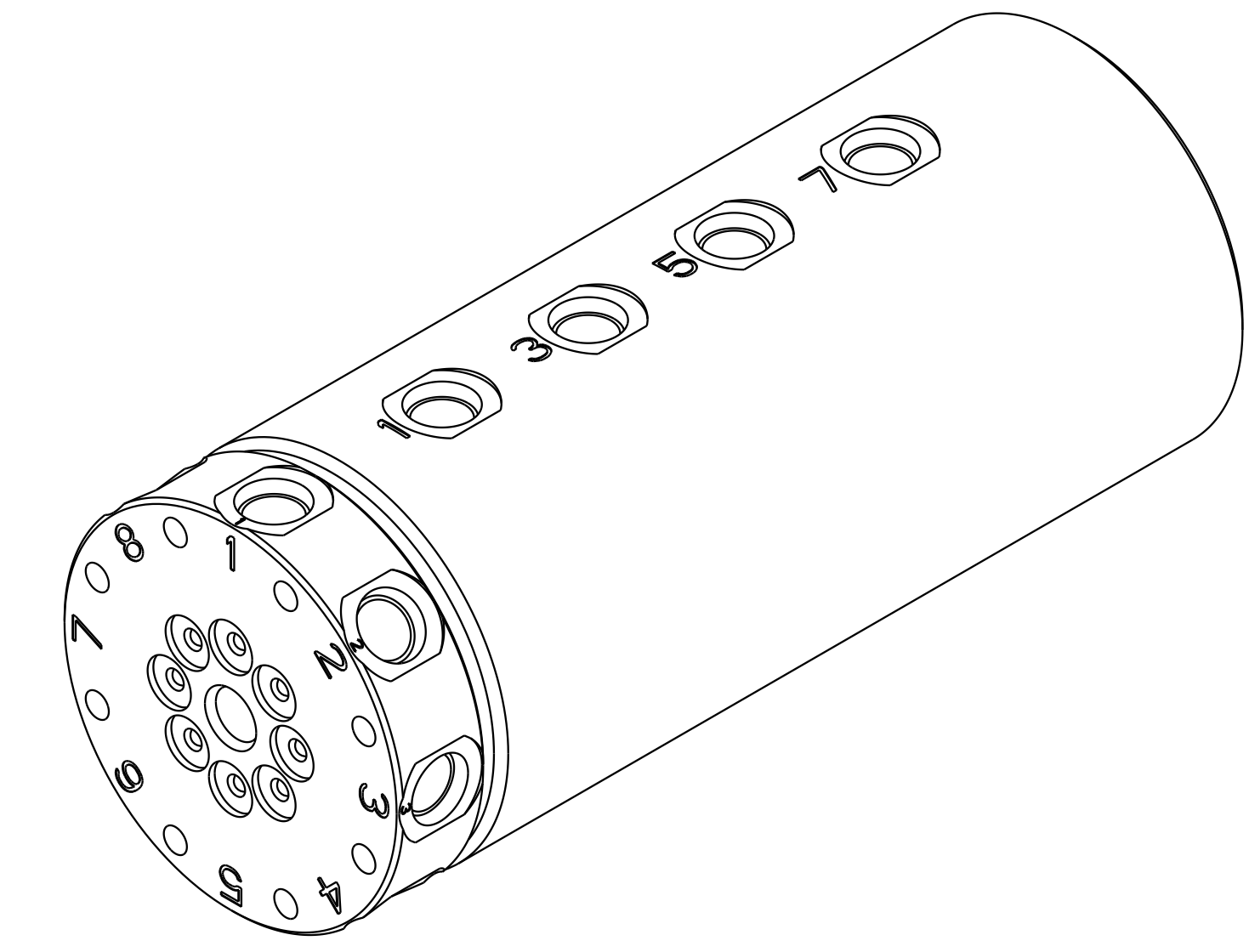
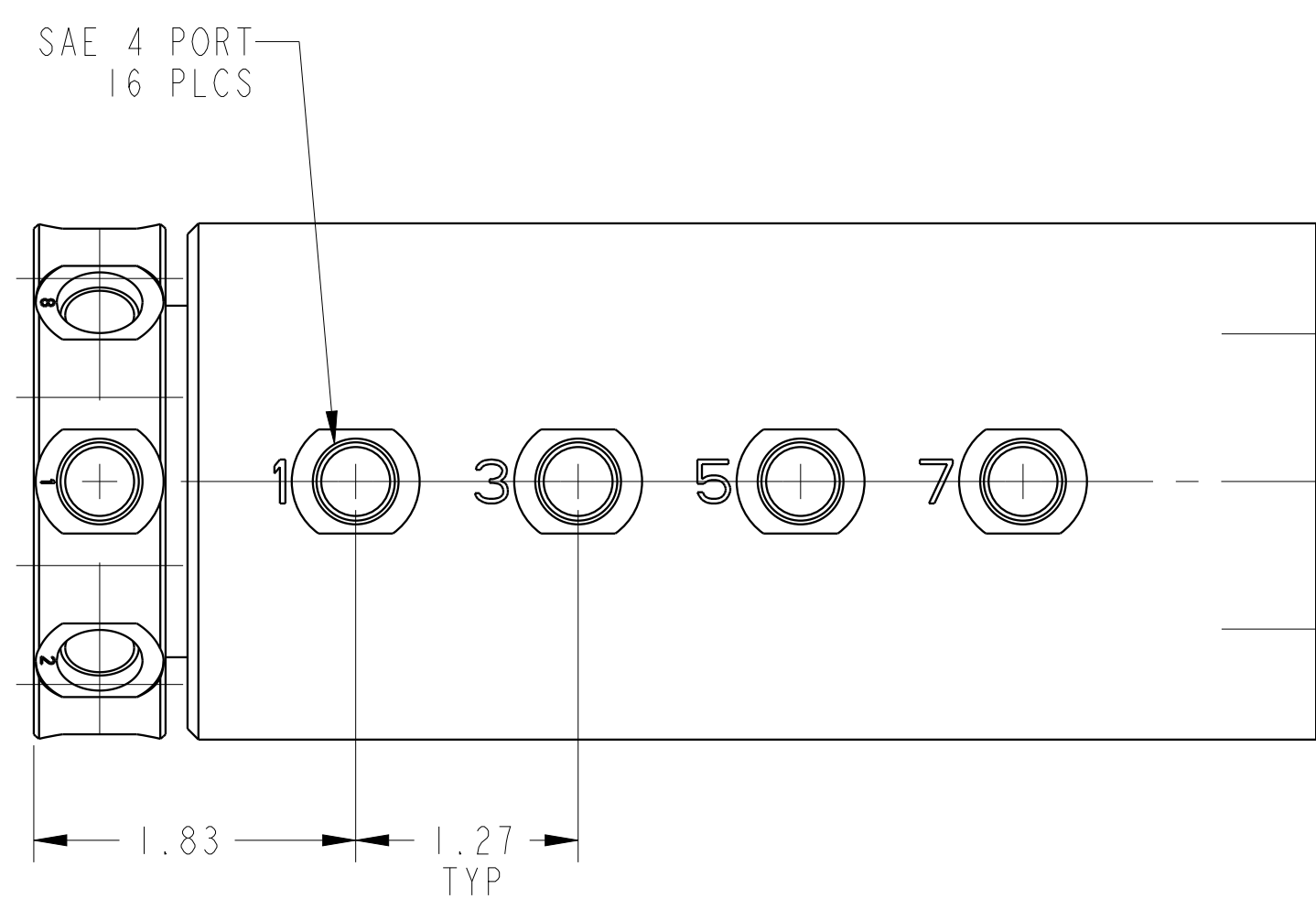
C

B

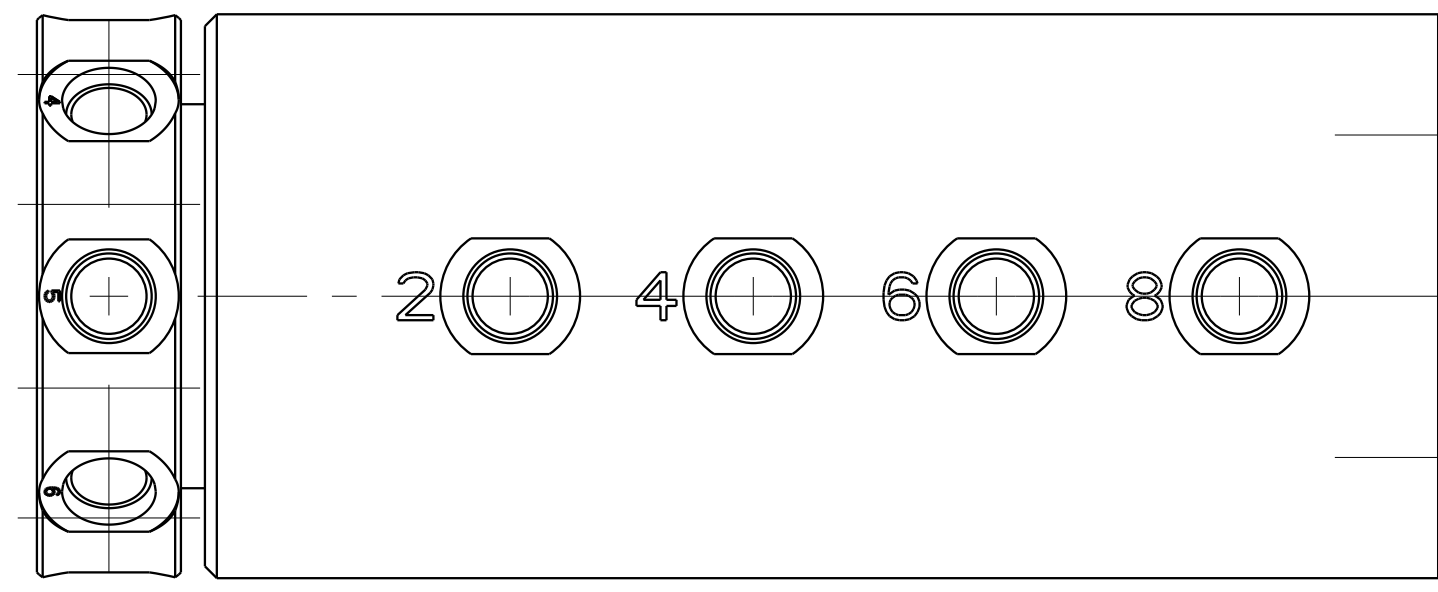
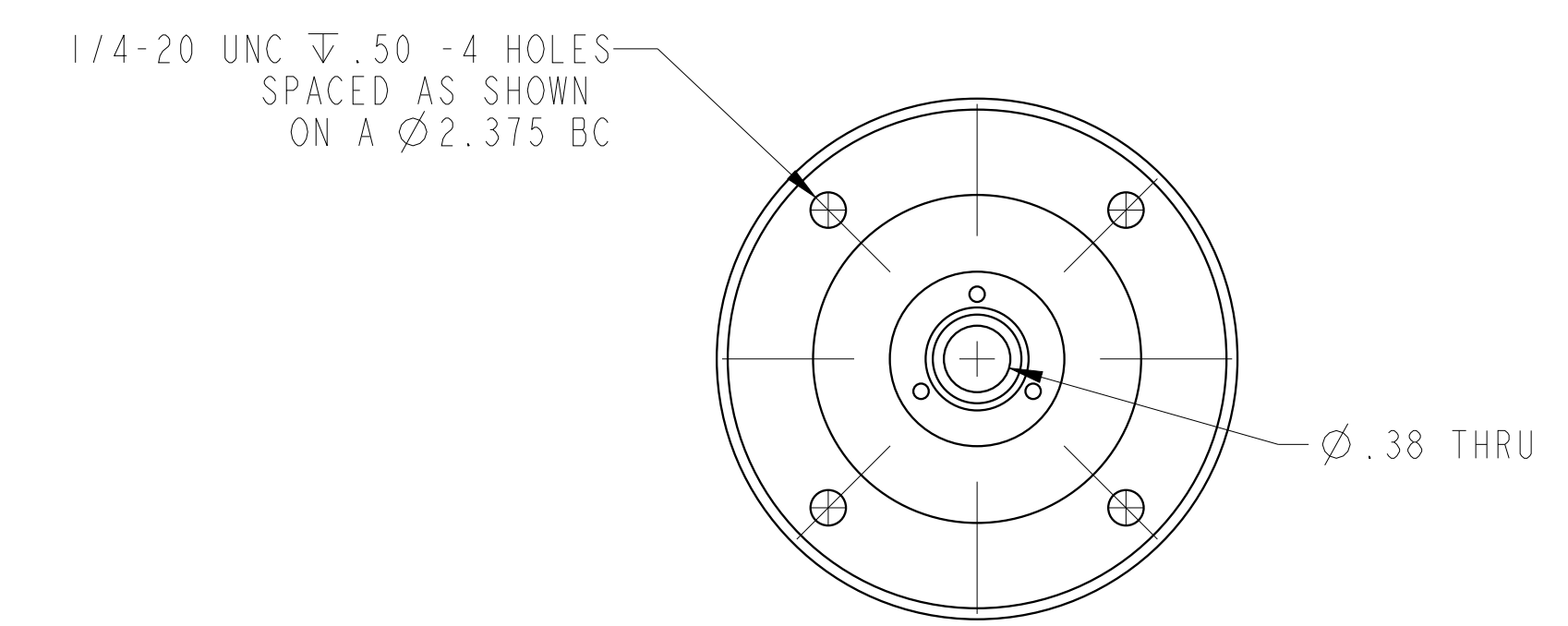
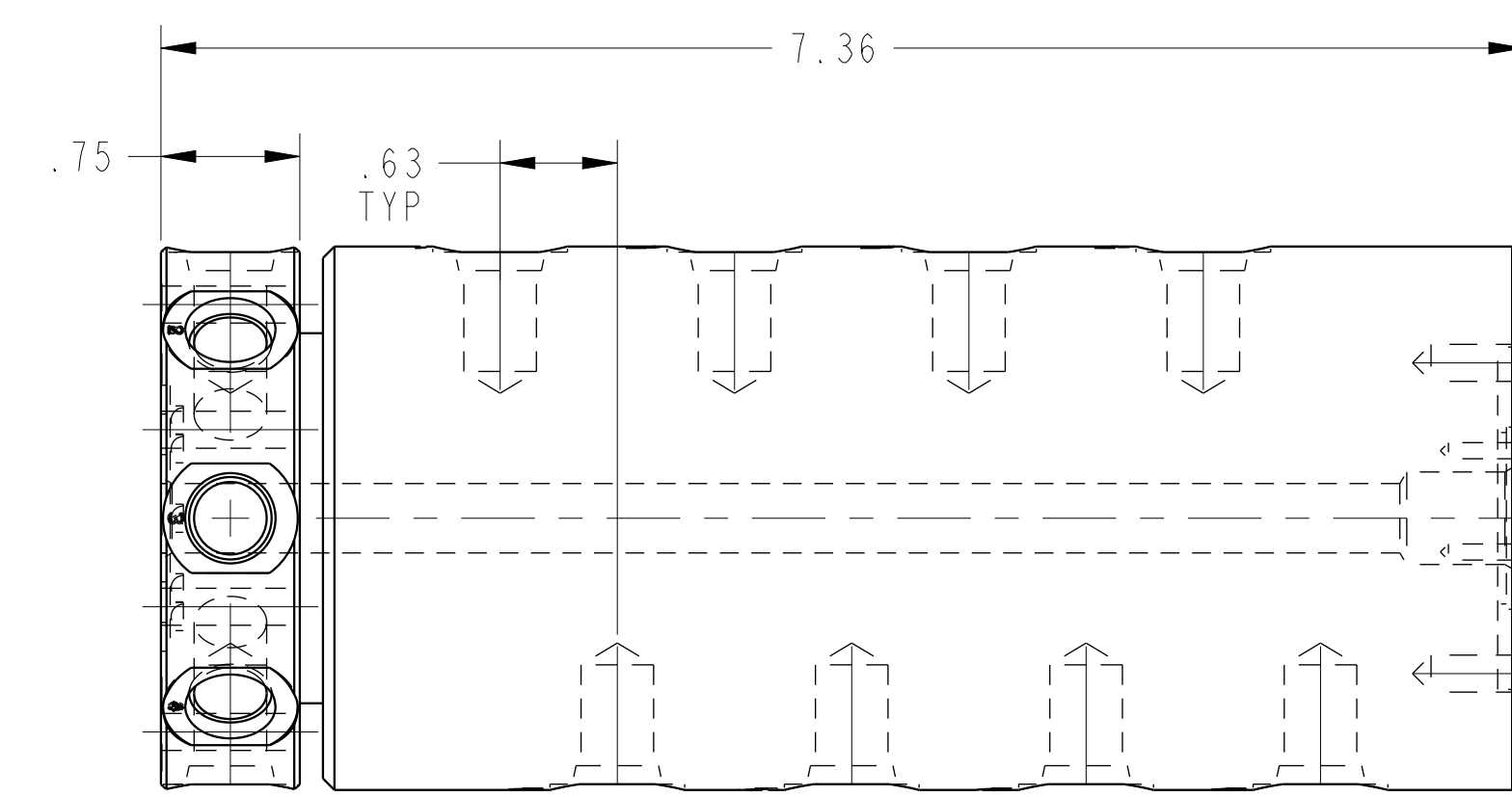
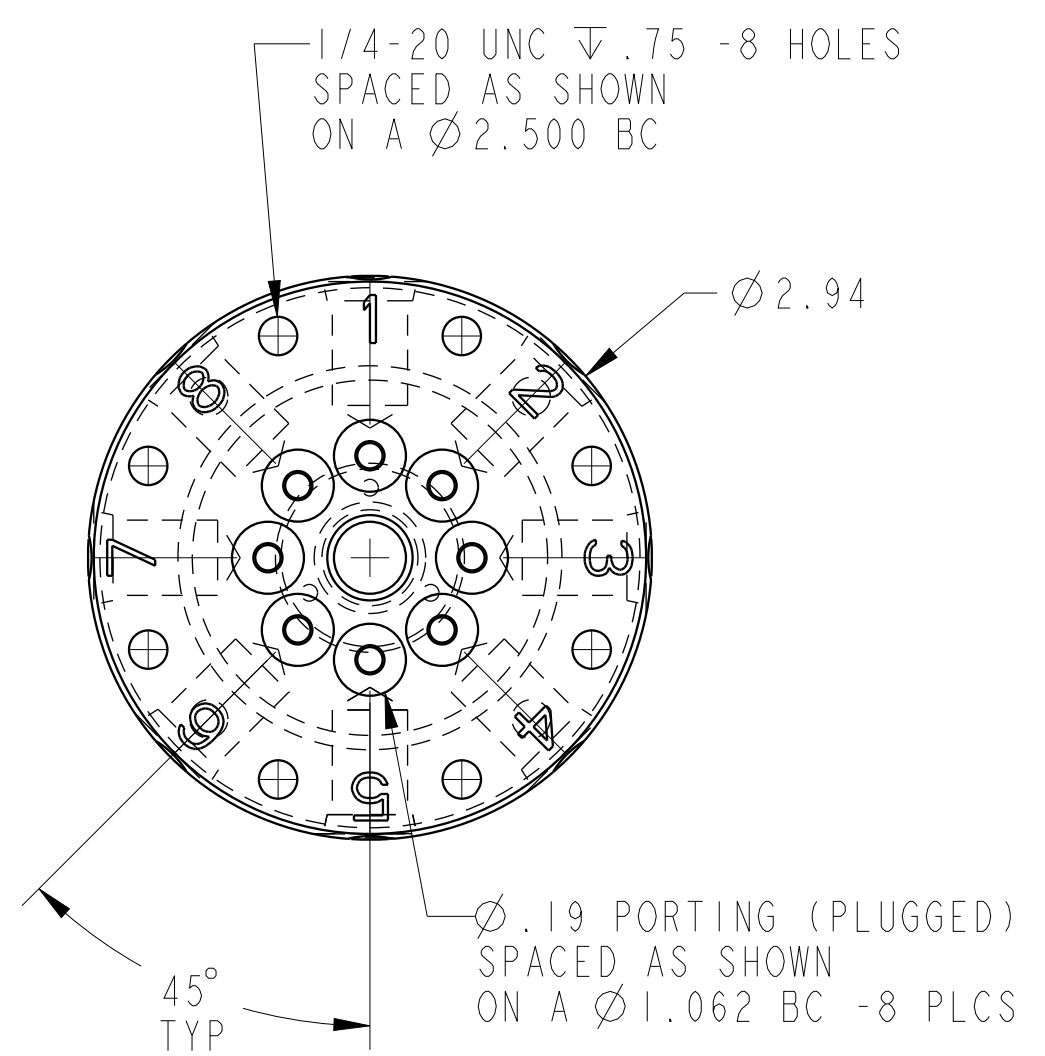
B

A

A



ILC32824800 REV B ECN 5033



CAD CONTROL DRAWING		
	VEKTEK, INC. 1334 E. SIXTH AVE. P.O. BOX 625 EMPORIA, KS. 66801 U.S.A.	

B	5033	RELEASE	JDW	02/14/23	32824800	c	RU, 8 PASSAGE, SAE4
REV	IN ACCORDANCE WITH ECN	EFFECTIVE DATE	REVISED BY	DATE	REFERENCE MODEL	REF REV	
DRW BY:	DRAWING STATUS: Released				TOLERANCES DO NOT APPLY		SIZE
DATE:	PRODUCTION APPROVED FOR RELEASED STATUS ONLY				DIMENSIONS ARE NOMINAL		D
							ILC32824800 REV B
							FORM FEG036, Rev. B

1

2

3

4

SHEET 1 OF 1