
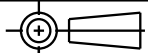
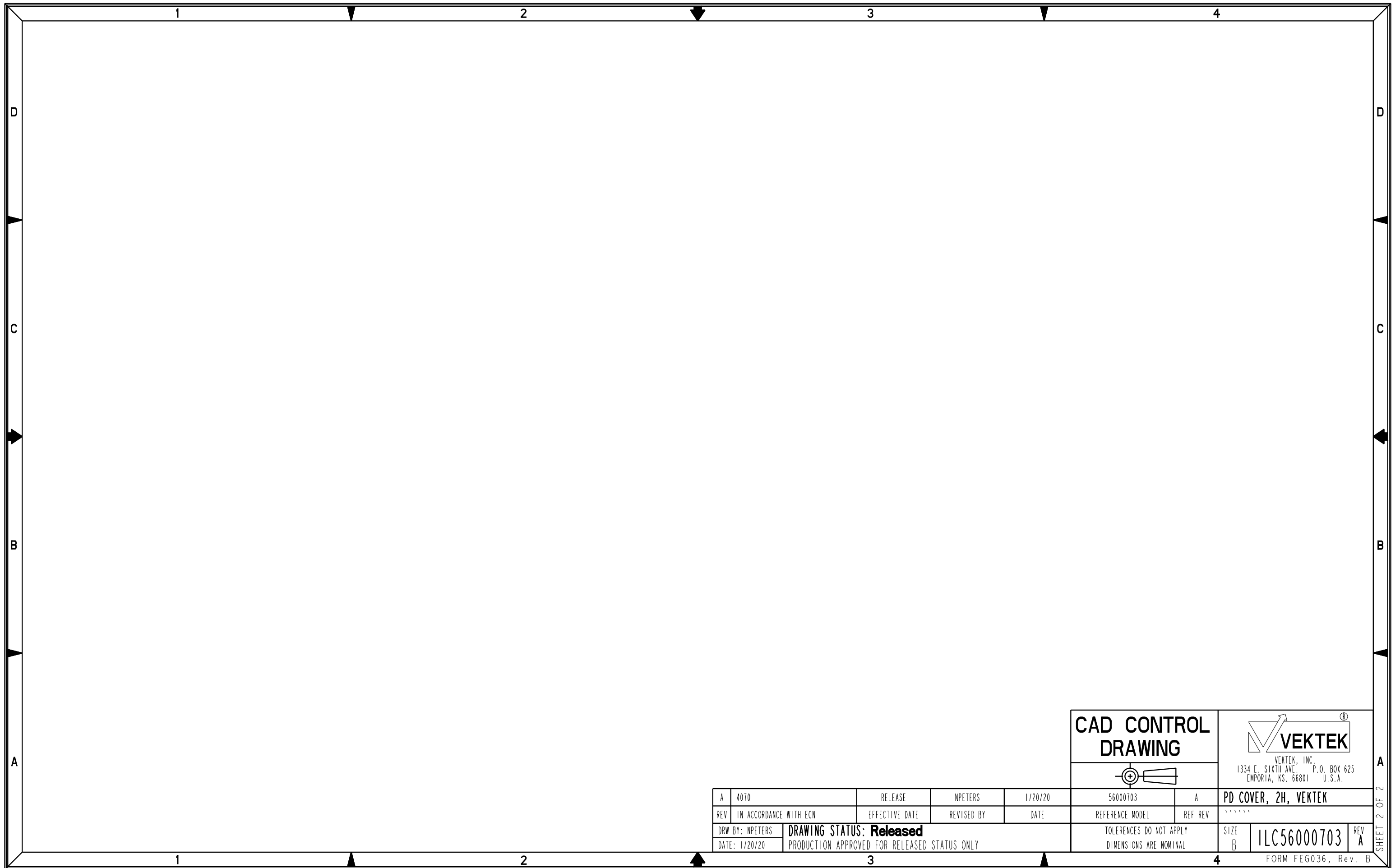

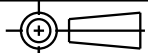


ILC56000703 REV A ECN4070

<b>CAD CONTROL DRAWING</b>				 VEKTEK, INC. 1334 E. SIXTH AVE. P.O. BOX 625 EMPORIA, KS. 66801 U.S.A.	
					
A	4070	RELEASE	NPETERS	1/20/20	56000703
REV	IN ACCORDANCE WITH ECN	EFFECTIVE DATE	REVISED BY	DATE	REFERENCE MODEL
DRW BY: NPETERS	<b>DRAWING STATUS: Released</b>			TOLERANCES DO NOT APPLY	SIZE
DATE: 1/20/20	PRODUCTION APPROVED FOR RELEASED STATUS ONLY			DIMENSIONS ARE NOMINAL	B
					ILC56000703 REV A FORM FEG036, Rev. B

SHEET 1 OF 2



<b>CAD CONTROL DRAWING</b>		 VEKTEK, INC. 1334 E. SIXTH AVE. P.O. BOX 625 EMPORIA, KS. 66801 U.S.A.						
								
A	4070	RELEASE	NPETERS	1/20/20	56000703	A	PD COVER, 2H, VEKTEK	
REV	IN ACCORDANCE WITH ECN	EFFECTIVE DATE	REVISED BY	DATE	REFERENCE MODEL	REF REV	''''''''	
DRW BY:	NPETERS	<b>DRAWING STATUS: Released</b>			TOLERANCES DO NOT APPLY		SIZE	
DATE:	1/20/20	PRODUCTION APPROVED FOR RELEASED STATUS ONLY			DIMENSIONS ARE NOMINAL		B	
							ILC56000703	REV A
							FORM FEG036, Rev. B	

SHEET 2 OF 2