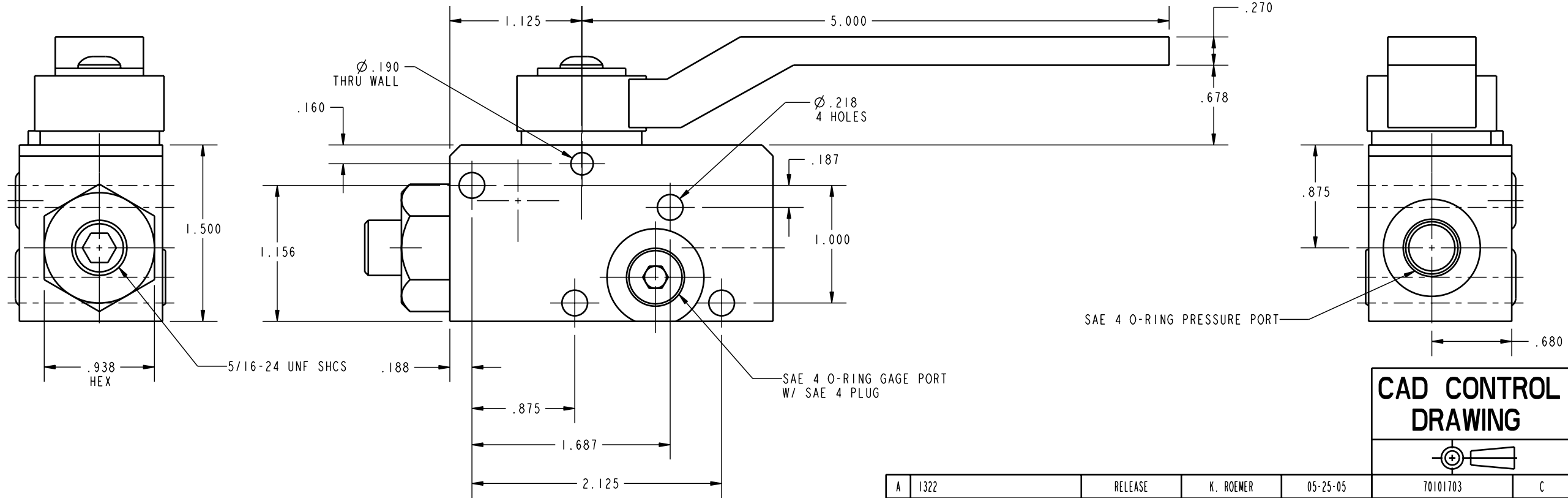


ILC70101703 REV A ECN1322



CAD CONTROL DRAWING			
		VEKTEK, INC. 1334 E. SIXTH AVE. P.O. BOX 625 EMPORIA, KS. 66801 U.S.A.	
A	1322	RELEASE	K. ROEMER
REV	IN ACCORDANCE WITH ECN	EFFECTIVE DATE	REVISED BY
DRW BY:	K. ROEMER	DRAWING STATUS: Released	
DATE:	05-25-05	PRODUCTION APPROVED FOR RELEASED STATUS ONLY	
70101703	C	70101703	C
REFERENCE MODEL	REF REV	VLV, UNL, MNL, W/BLDR	
TOLERANCES DO NOT APPLY DIMENSIONS ARE NOMINAL		SIZE B	ILC70101703 REV A
		FORM FEG036, Rev. A	