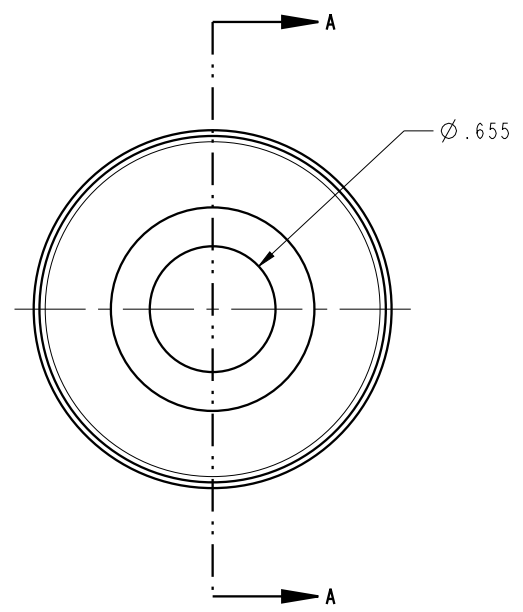
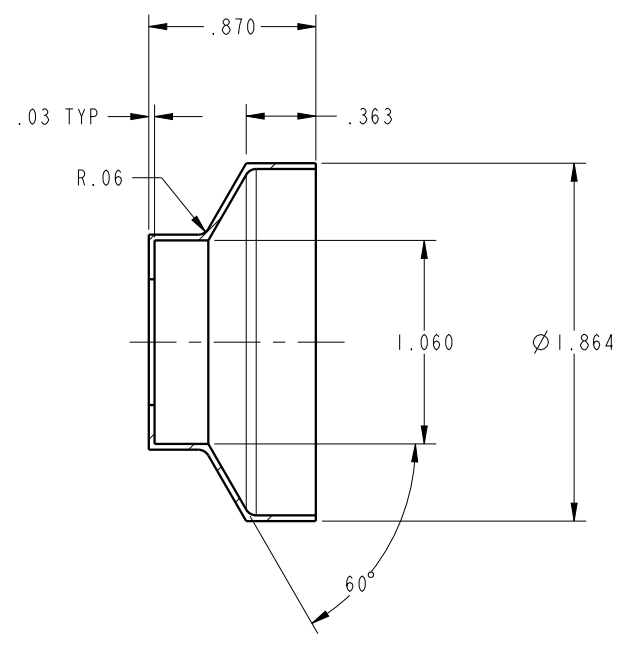

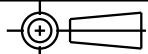


ILC81070901 REV A 4223



CAD CONTROL DRAWING				 VEKTEK, INC. 1334 E. SIXTH AVE. P.O. BOX 625 EMPORIA, KS. 66801 U.S.A.	
				SHIELD, HC, WS, FA, 8000	
A	4223	RELEASE	ALS	8/20/20	81070901
REV	IN ACCORDANCE WITH ECN	EFFECTIVE DATE	REVISED BY	DATE	REFERENCE MODEL
REV	IN ACCORDANCE WITH ECN	EFFECTIVE DATE	REVISED BY	DATE	REFERENCE MODEL
DRW BY: ALS	DRAWING STATUS: Released				TOLERANCES DO NOT APPLY
DATE: 8/20/20	PRODUCTION APPROVED FOR RELEASED STATUS ONLY				DIMENSIONS ARE NOMINAL
SIZE B	ILC81070901	REV A	FORM FEG036, Rev. B		