

1

2

3

4

D

D

C

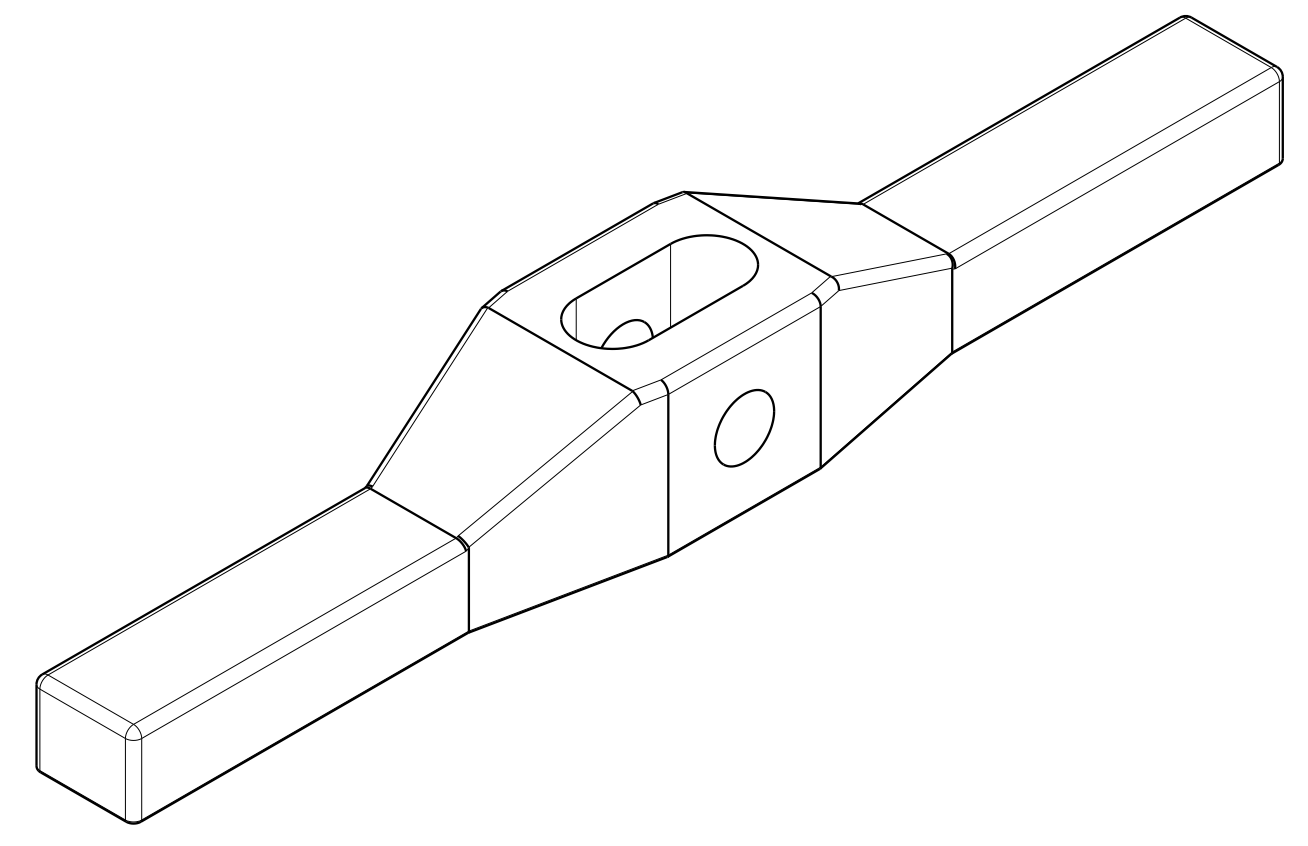
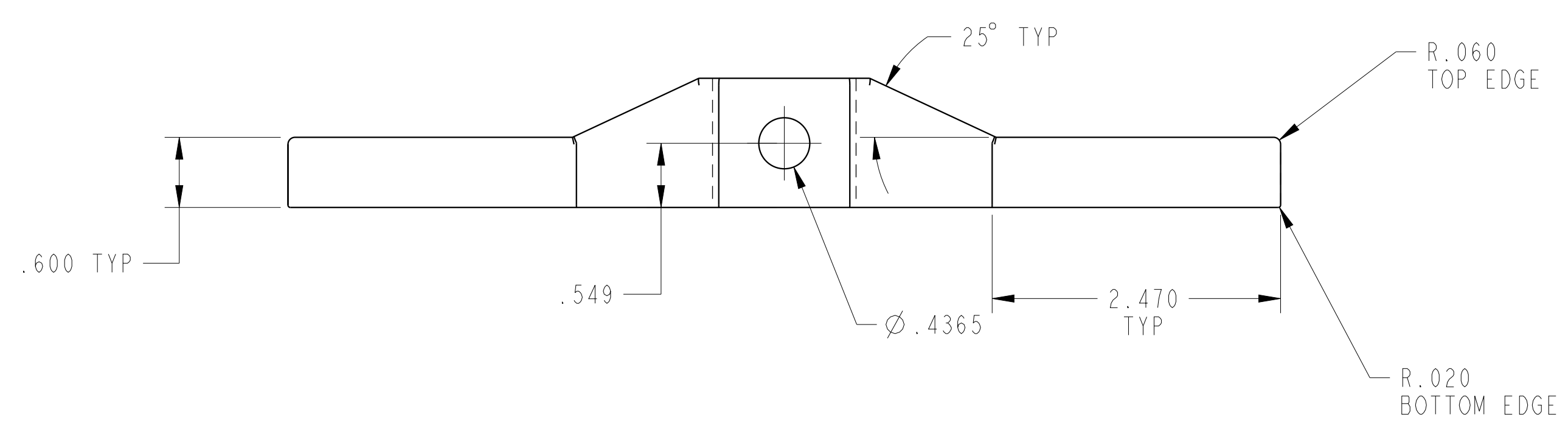
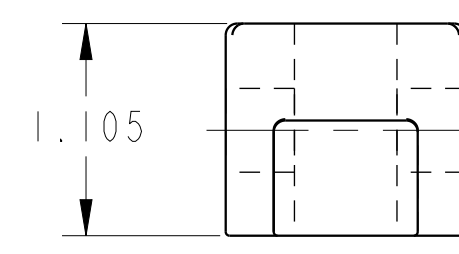
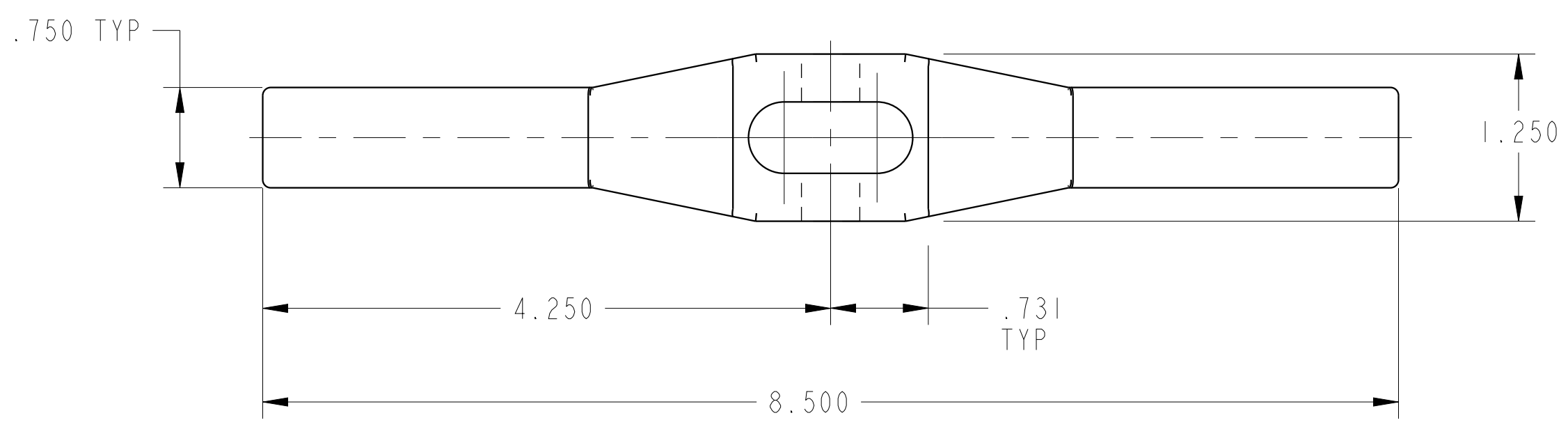
C

B

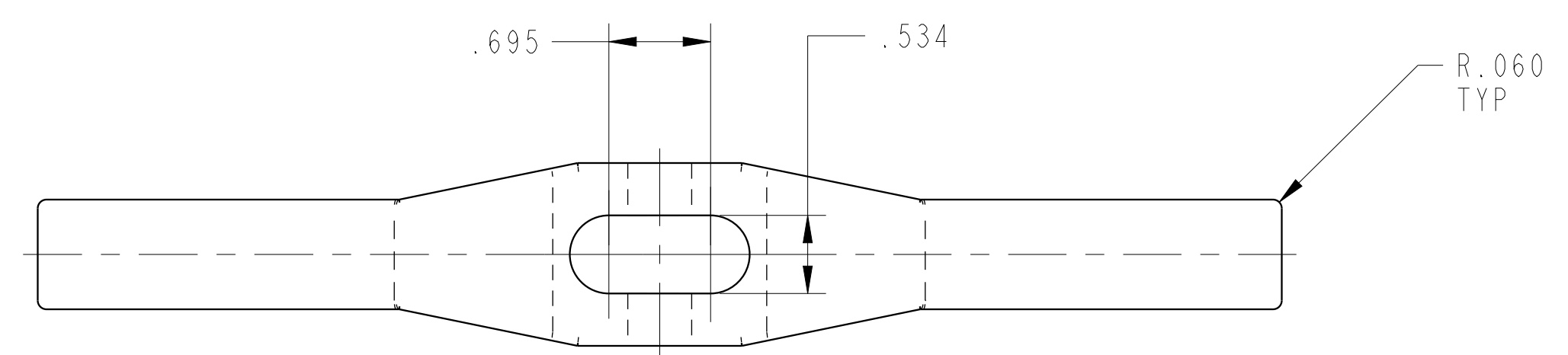
B

A

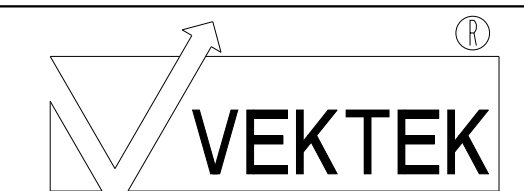
A



ILC91521309 REV B ECN 4064



CAD CONTROL DRAWING



VEKTEK, INC.  
1334 E. SIXTH AVE. P.O. BOX 625  
EMPORIA, KS. 66801 U.S.A.

B	4064	RELEASE	NPETERS	2/5/20	91521309	H	ARM, SC, ROCKER, 2600
REV	IN ACCORDANCE WITH ECN	EFFECTIVE DATE	REVISED BY	DATE	REFERENCE MODEL	REF REV	***
DRW BY:	K. ROEMER	DRAWING STATUS: <b>Released</b>			TOLERANCES DO NOT APPLY DIMENSIONS ARE NOMINAL		SIZE D
DATE:	10-18-02	PRODUCTION APPROVED FOR RELEASED STATUS ONLY			ILC91521309		REV B

1

2

3

4

SHEET 1 OF 1