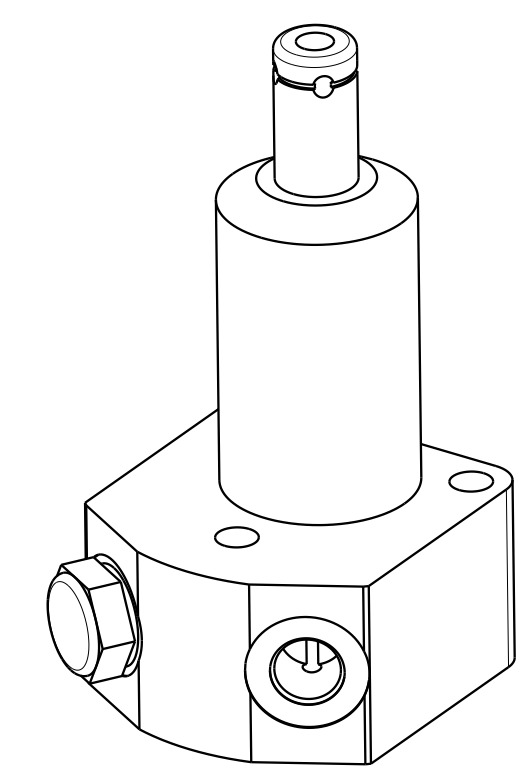
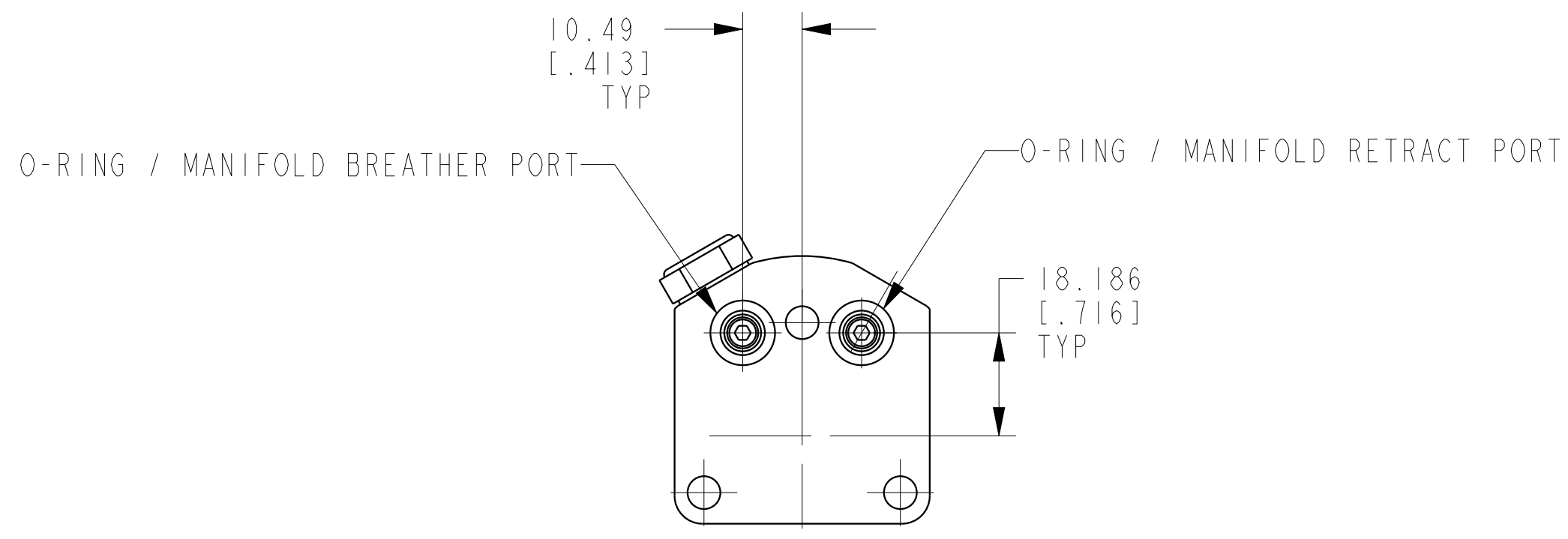


1

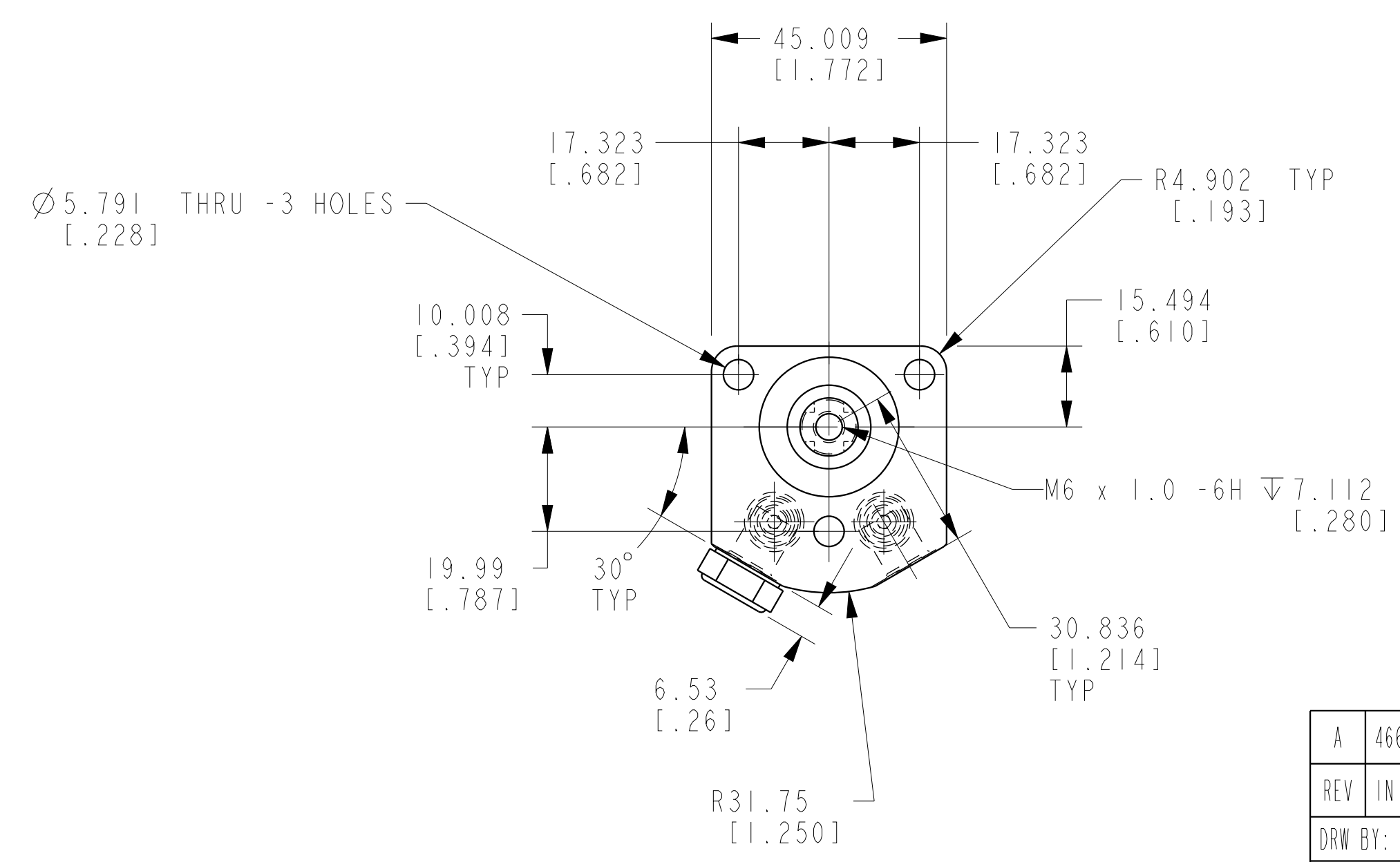
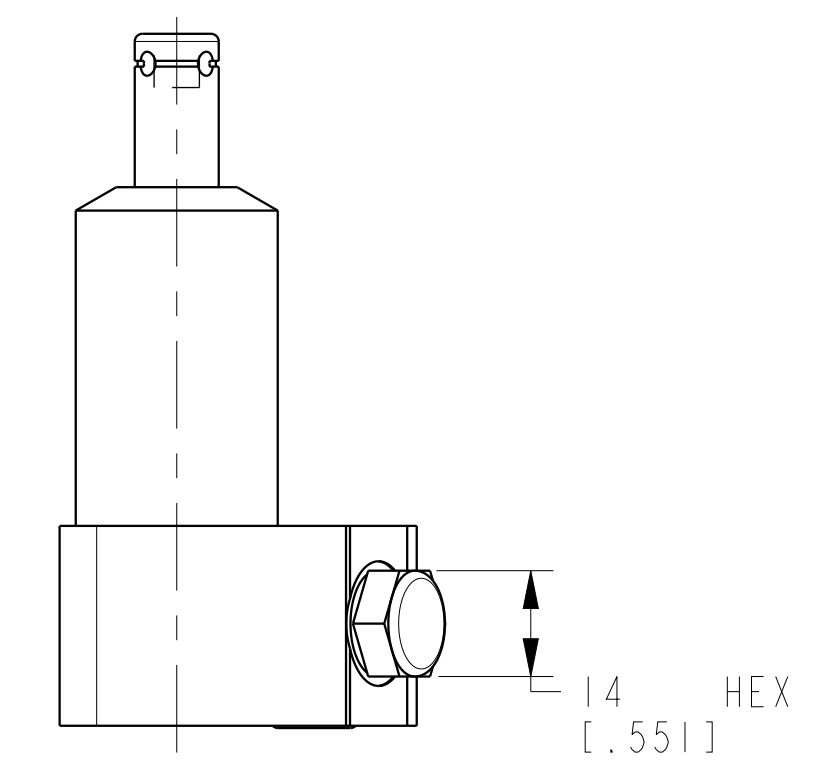
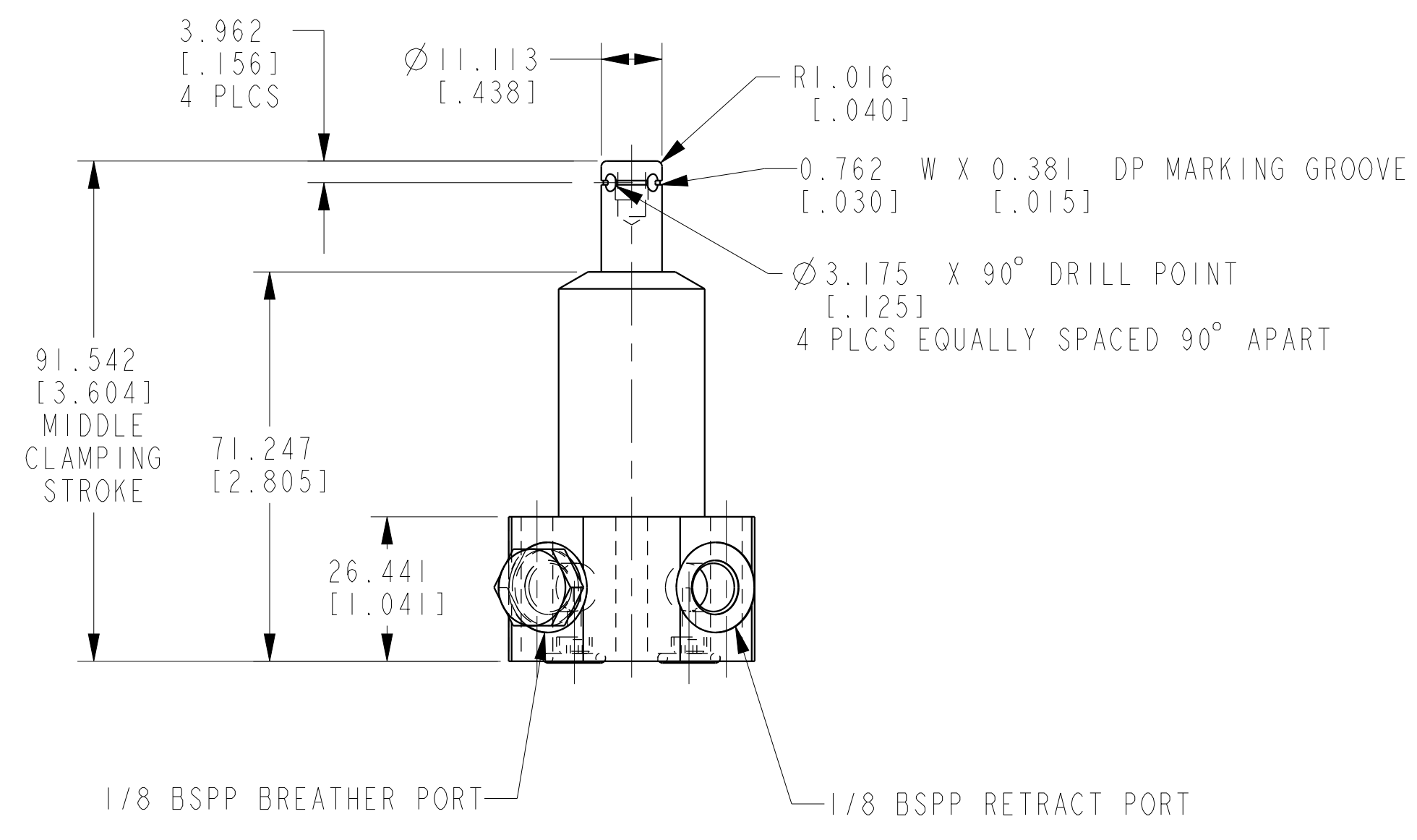
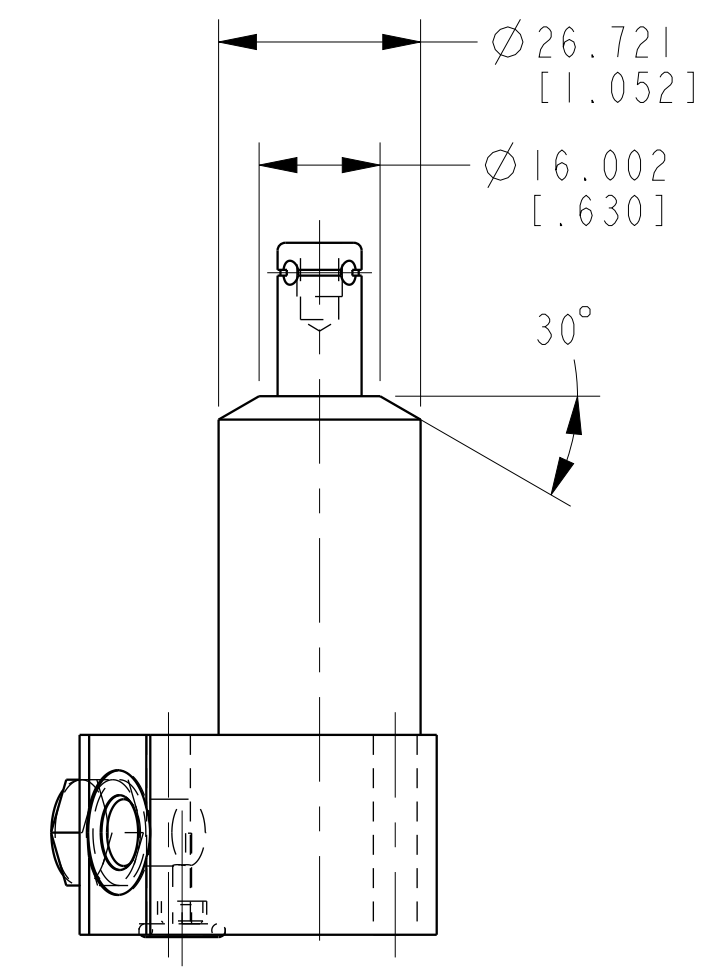
2

3

4



I LCM41520214 REV A ECN 4665



CAD CONTROL DRAWING			VEKTEK, INC. 1334 E. SIXTH AVE. P.O. BOX 625 EMPORIA, KS. 66801 U.S.A.	

A	4665	RELEASE	NPETERS	4/4/22	41520214	A	SC, BF, VC, 2 KN, SA, LH
REV	IN ACCORDANCE WITH ECN	EFFECTIVE DATE	REVISED BY	DATE	REFERENCE MODEL	REF REV	
DRW BY:	NPETERS	DRAWING STATUS: Released			TOLERANCES DO NOT APPLY	UNITS	SIZE
DATE:	4/4/22	PRODUCTION APPROVED FOR RELEASED STATUS ONLY			DIMENSIONS ARE NOMINAL	mm (inch)	D
					I LCM41520214	REV	A
							FORM FEG036, Rev. C

1

2

3

4

SHEET 1 OF 1