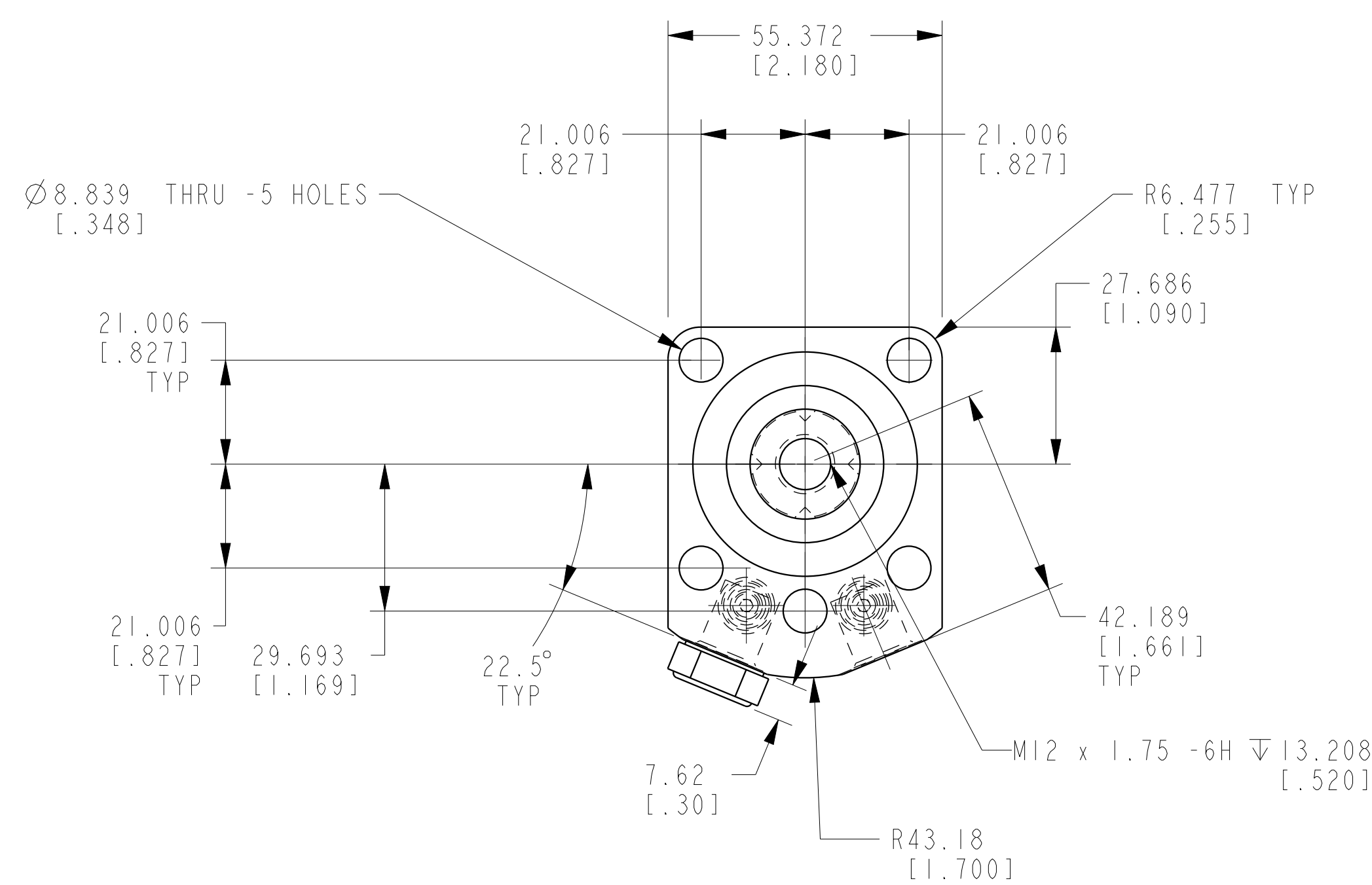
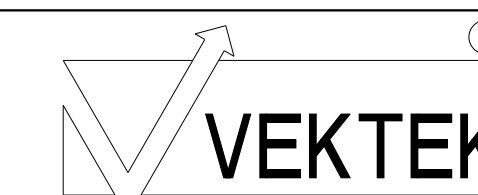


ILCM41521116 REV C ECN 5049



CAD CONTROL DRAWING



VEKTEK, INC.
 1334 E. SIXTH AVE. P.O. BOX 625
 EMPORIA, KS. 66801 U.S.A.

C	5049	RELEASE	JDW	03/21/23
REV	IN ACCORDANCE WITH ECN	EFFECTIVE DATE	REVISED BY	DATE
DRW BY:	NPETERS	DRAWING STATUS: Released		
DATE:	4/4/22	PRODUCTION APPROVED FOR RELEASED STATUS ONLY		

41521116	A	SC, BF, VC, 11.6 KN, SA, STR
TOLERANCES DO NOT APPLY DIMENSIONS ARE NOMINAL	UNITS mm (inch)	SIZE D

41521116	REV C
FORM FEG036, Rev. C	