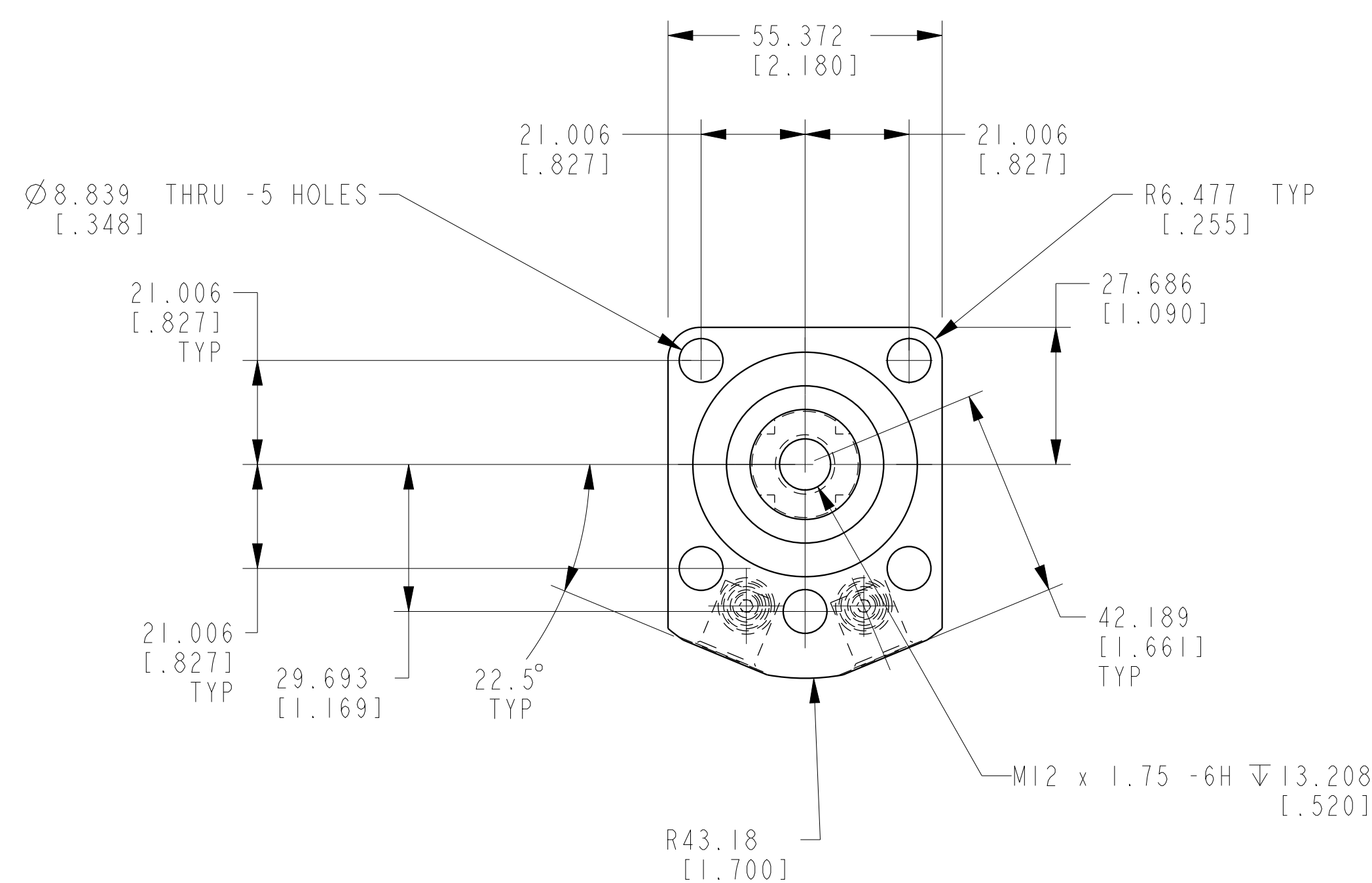
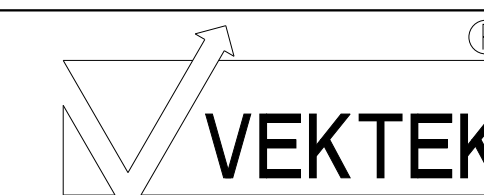


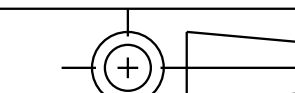
ILCM41521123 REV B ECN 4998



CAD CONTROL DRAWING



VEKTEK, INC.  
 1334 E. SIXTH AVE. P.O. BOX 625  
 EMPORIA, KS. 66801 U.S.A.



B	4998	RELEASE	RLK	12/22/22
REV	IN ACCORDANCE WITH ECN	EFFECTIVE DATE	REVISED BY	DATE
DRW BY:	NPETERS	DRAWING STATUS: Released		
DATE:	4/4/22	PRODUCTION APPROVED FOR RELEASED STATUS ONLY		

41521123	A	SC, BF, VC, 11.6 KN, DA, RH
TOLERANCES DO NOT APPLY DIMENSIONS ARE NOMINAL	UNITS mm (inch)	SIZE D
ILCM41521123	REV B	