

1

2

3

4

D

D

C

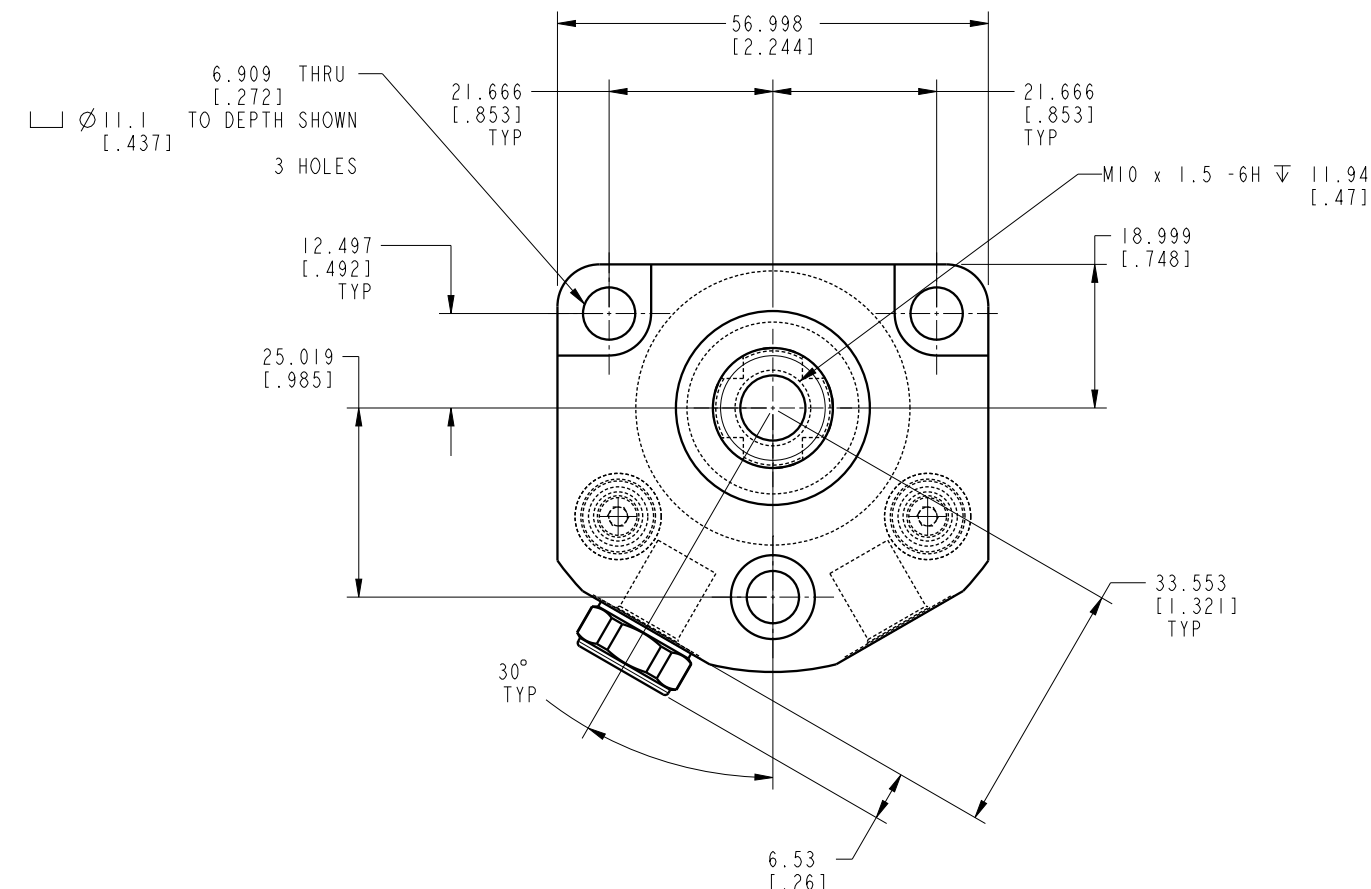
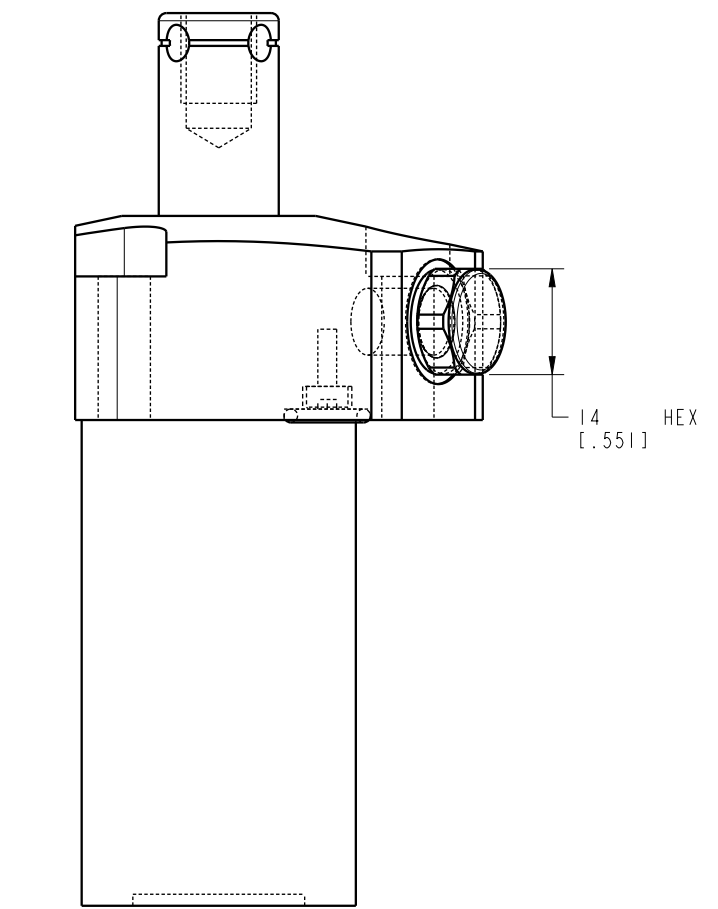
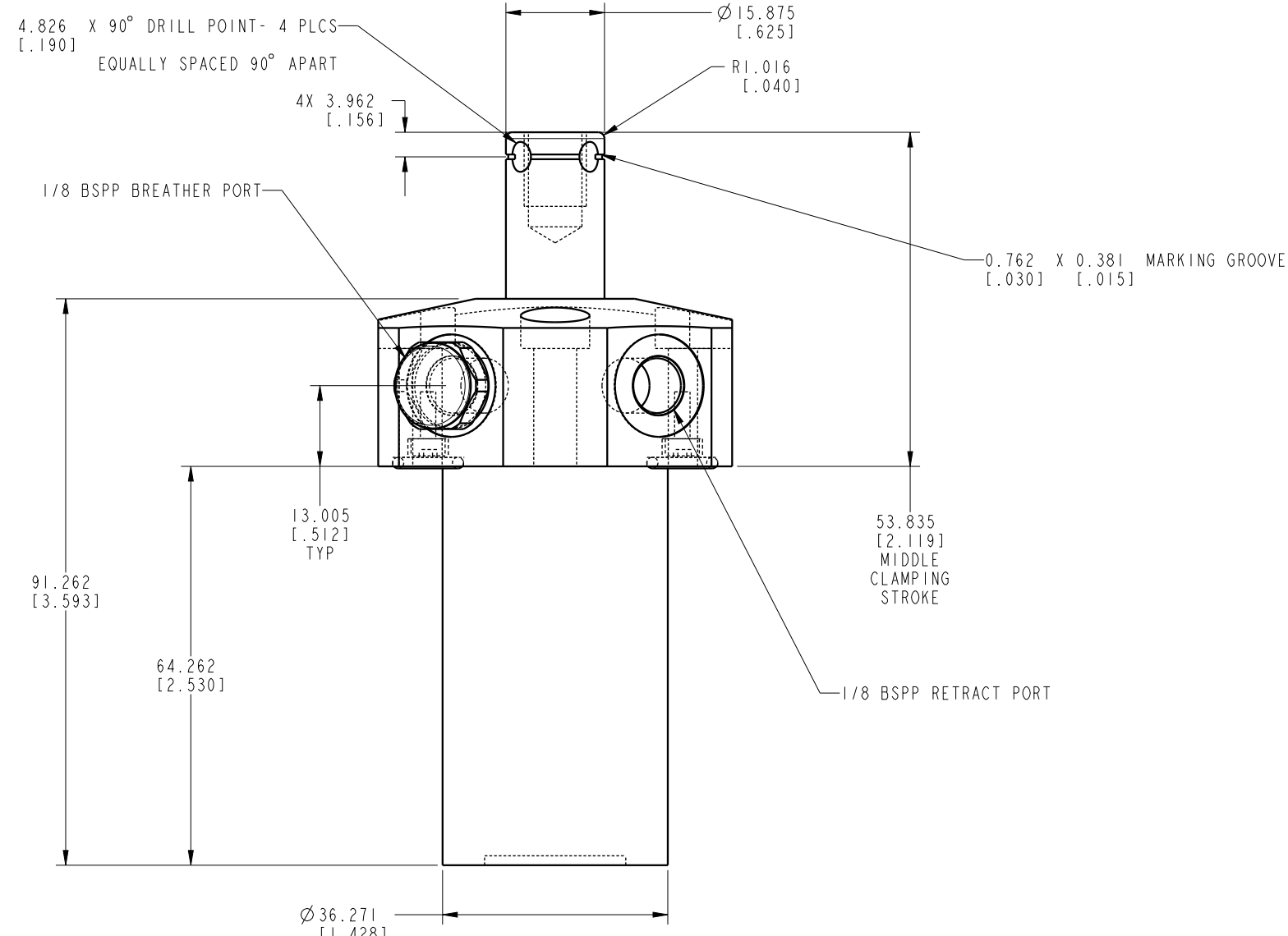
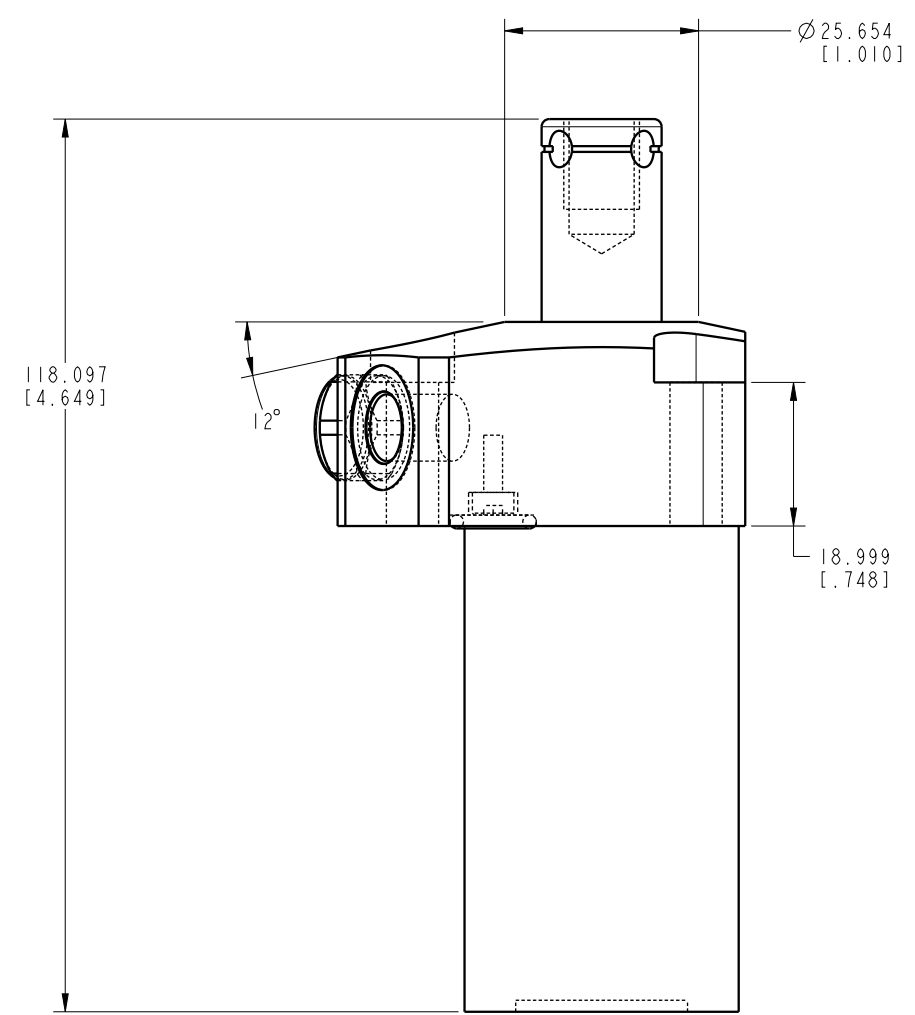
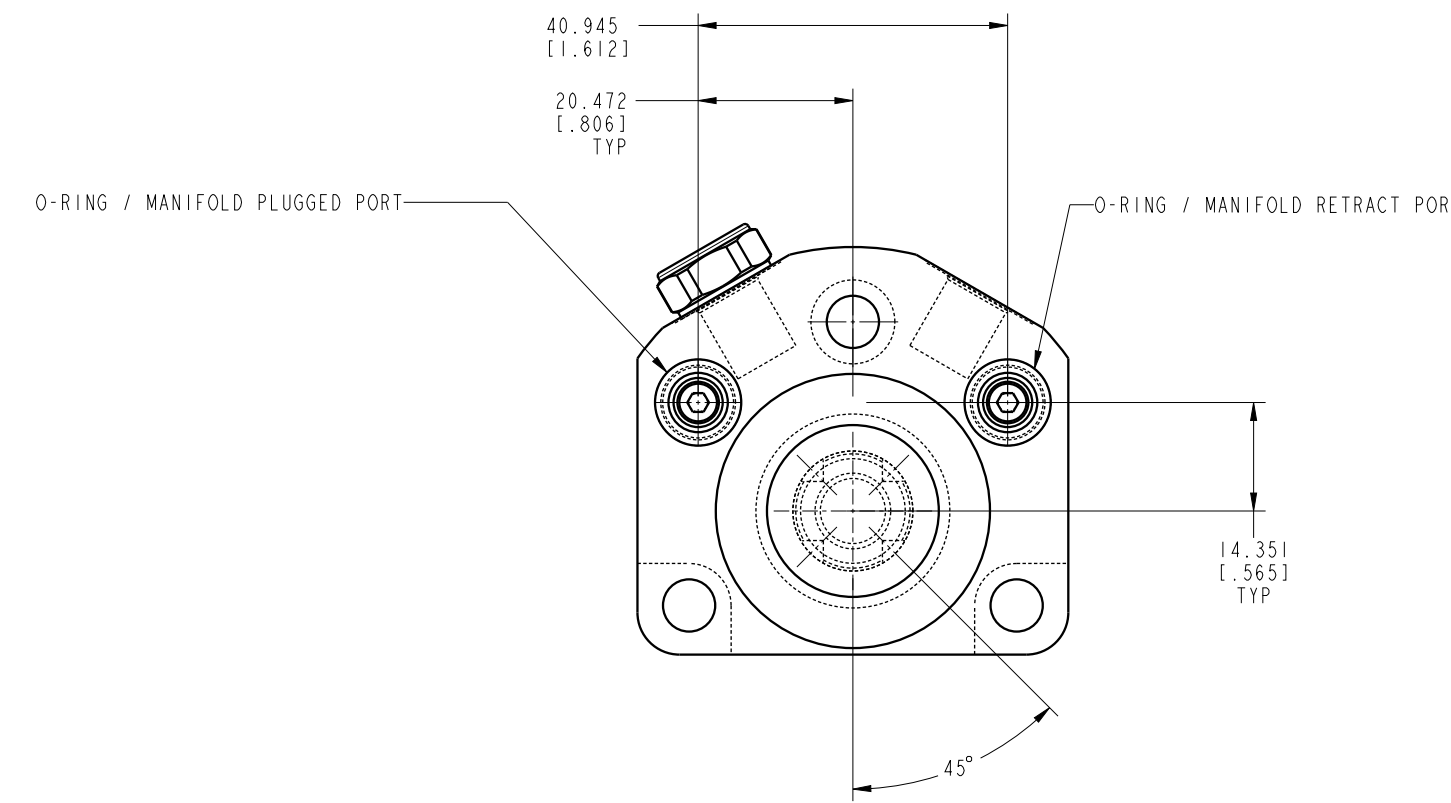
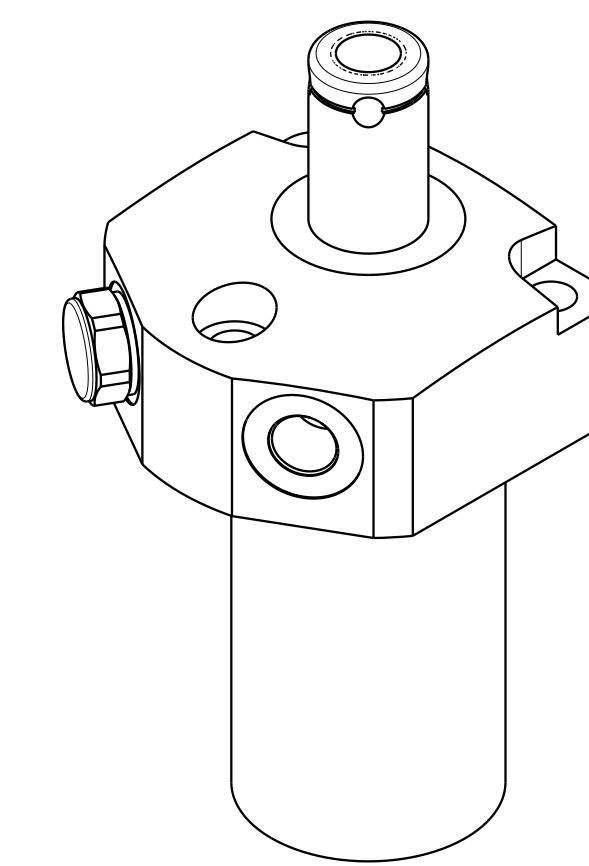
C

B

B

A

A



| | | |
|---------------------|--|--|
| CAD CONTROL DRAWING | | |
| | VEKTEK, INC. 1334 E. SIXTH AVE. P.O. BOX 625 EMPORIA, KS. 66801 U.S.A. | |

| | | | | | | | |
|---------|------------------------|--|------------|--------|-------------------------|-----------|----------------------------|
| A | 4665 | RELEASE | NPETERS | 4/1/22 | 41560513 | A | SC, TF, VC, 4.9 KN, SA, RH |
| REV | IN ACCORDANCE WITH ECN | EFFECTIVE DATE | REVISED BY | DATE | REFERENCE MODEL | REF REV | |
| DRW BY: | NPETERS | DRAWING STATUS: Released | | | TOLERANCES DO NOT APPLY | UNITS | SIZE |
| DATE: | 3/31/22 | PRODUCTION APPROVED FOR RELEASED STATUS ONLY | | | DIMENSIONS ARE NOMINAL | mm (inch) | D |
| | | | | | ILCM41560513 | REV | A |

1

2

3

4

SHEET 1 OF 1