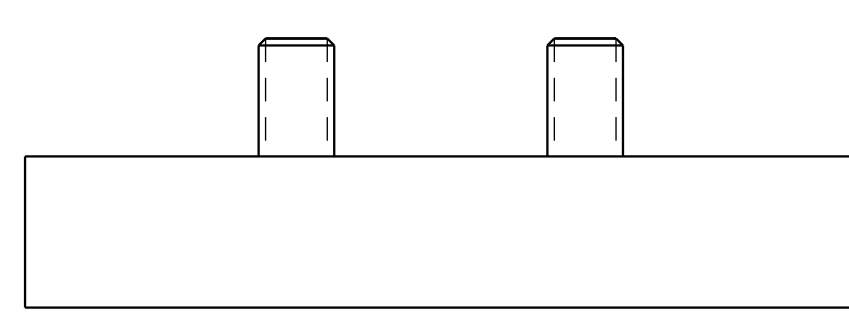


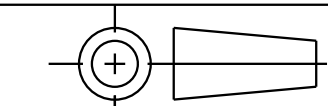
I LCM41582002 REV. A ECN4112



**CAD CONTROL  
DRAWING**



VEKTEK, INC.  
1334 E. SIXTH AVE. P.O. BOX 625  
EMPORIA, KS. 66801 U.S.A.



A	4112	RELEASE	JDW	02/21/20	41582002	A	PLATE, MOUNT, MM PORTS, M10 SHCS
REV	IN ACCORDANCE WITH ECN	EFFECTIVE DATE	REVISED BY	DATE	REFERENCE MODEL	REF REV	
DRW BY:	JDW	DRAWING STATUS: <b>Released</b>			TOLERANCES DO NOT APPLY DIMENSIONS ARE NOMINAL	UNITS mm (inch)	SIZE D
DATE:	02/21/20	PRODUCTION APPROVED FOR RELEASED STATUS ONLY					I LCM41582002
							REV A