

1

2

3

4

D

D

C

C

B

B

A

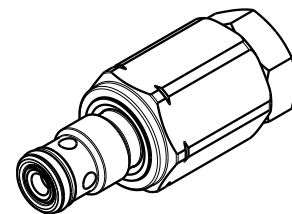
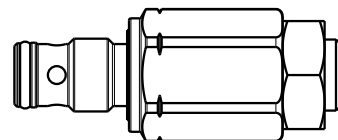
A

1

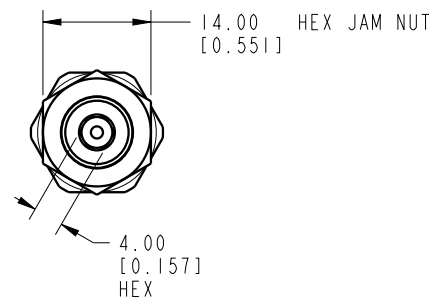
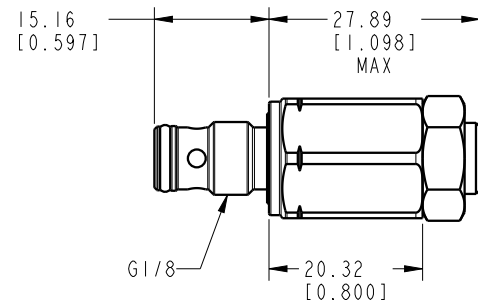
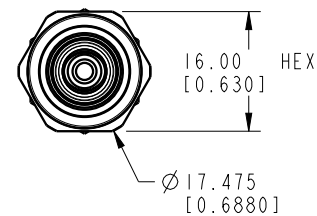
2

3

4



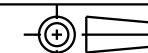
I LCM47044330 REV A ECN 3559



CAD CONTROL DRAWING



VEKTEK, INC.  
1334 E. SIXTH AVE. P.O. BOX 625  
EMPORIA, KS. 66801 U.S.A.



A	3559	RELEASE	ATHOMSEN	22-AUG-2018	47044330	A	ASSY, IP-SEQ, G1/8, 15.16, 50BAR	
REV	IN ACCORDANCE WITH ECN	EFFECTIVE DATE	REVISED BY	DATE	REFERENCE MODEL	REF REV	*****	
DRW BY:	ATHOMSEN	DRAWING STATUS: <b>Released</b>			TOLERANCES DO NOT APPLY	UNITS	SIZE	
DATE:	22-AUG-2018	PRODUCTION APPROVED FOR RELEASED STATUS ONLY			DIMENSIONS ARE NOMINAL	mm [inch]	B	
							I LCM47044330	REV A

FORM FEG036, Rev. C

SHEET 1 OF 1