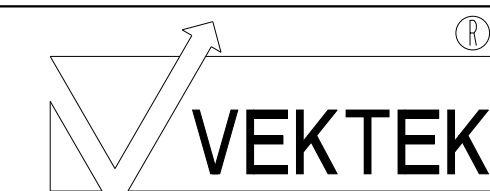
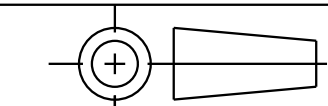


CAD CONTROL
DRAWING



VEKTEK, INC.
1334 E. SIXTH AVE. P.O. BOX 625
EMPORIA, KS. 66801 U.S.A.



| | | | | | | | |
|---------|------------------------|--|------------|---------|---------------------------|-----------|---------------------------|
| A | 4540 | RELEASE | RLK | 10/8/21 | 41070816 | A | WS, FA, CM, HC, 17.8kN LS |
| REV | IN ACCORDANCE WITH ECN | EFFECTIVE DATE | REVISED BY | DATE | REFERENCE MODEL | REF REV | |
| DRW BY: | RLK | DRAWING STATUS: Released | | | TOLERANCES DO NOT APPLY | UNITS | SIZE |
| DATE: | 11/28/21 | PRODUCTION APPROVED FOR RELEASED STATUS ONLY | | | DIMENSIONS ARE NOMINAL | mm (inch) | D |
| | | | | | I L C M V 4 1 0 7 0 8 1 6 | REV | A |