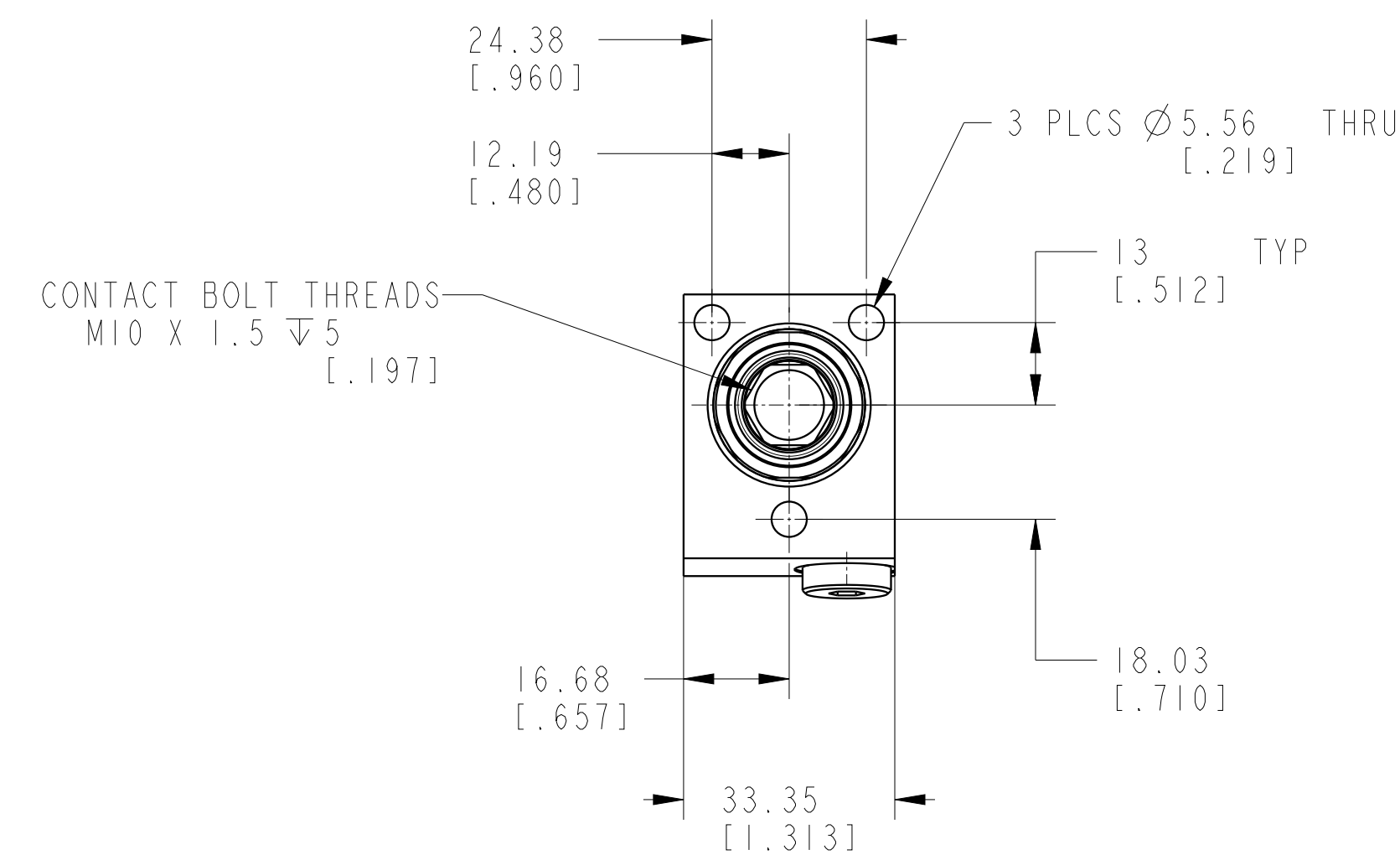
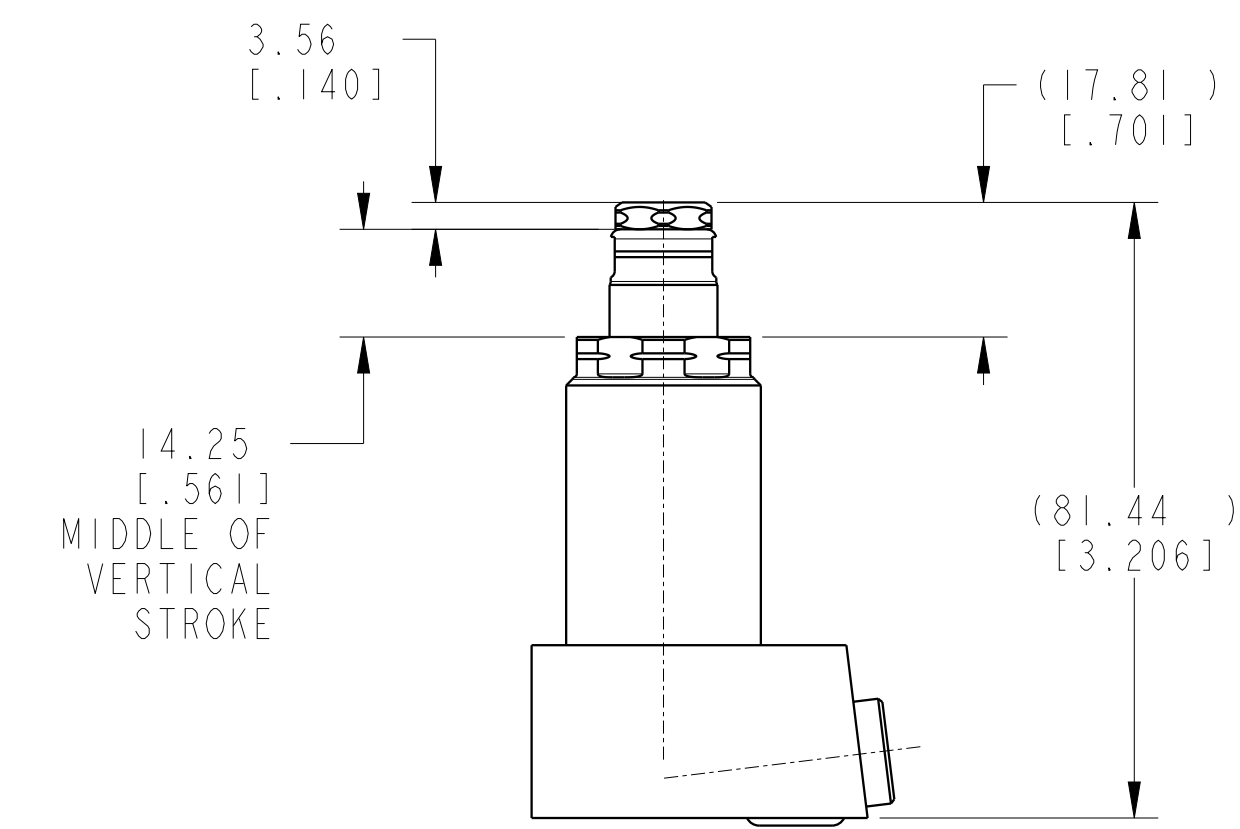
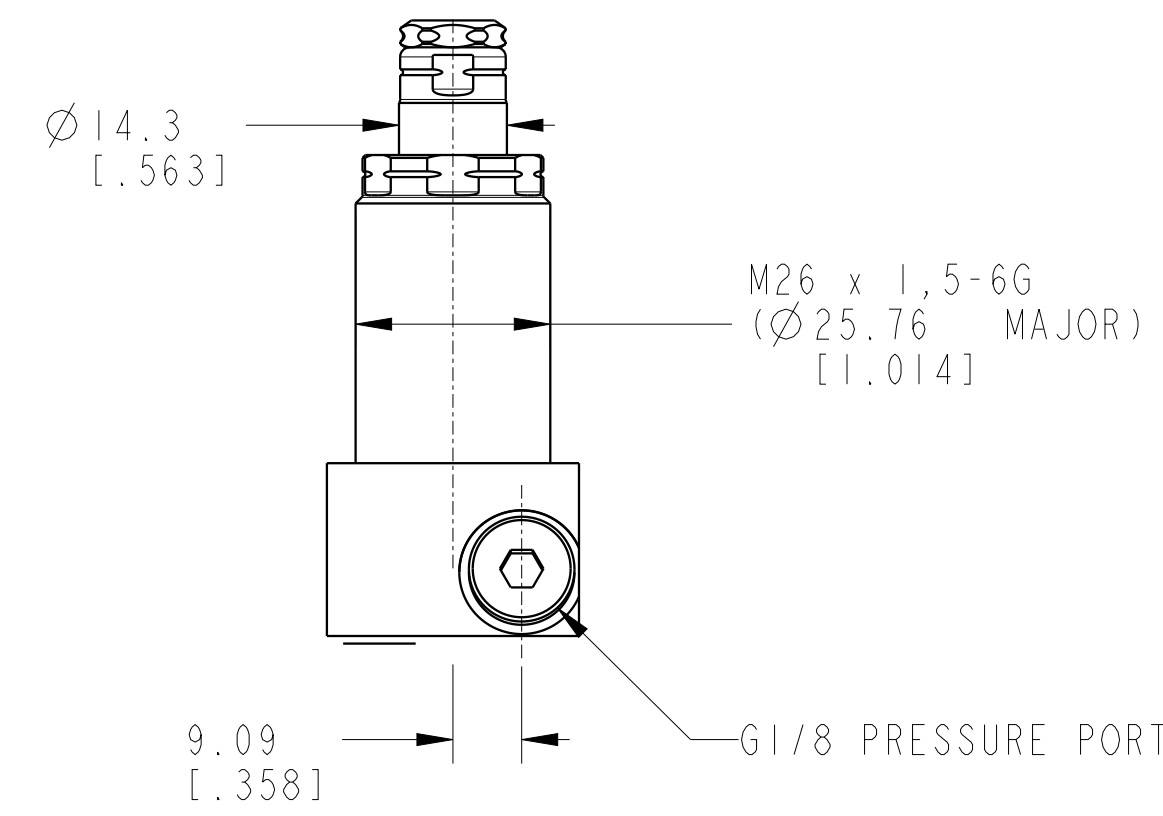
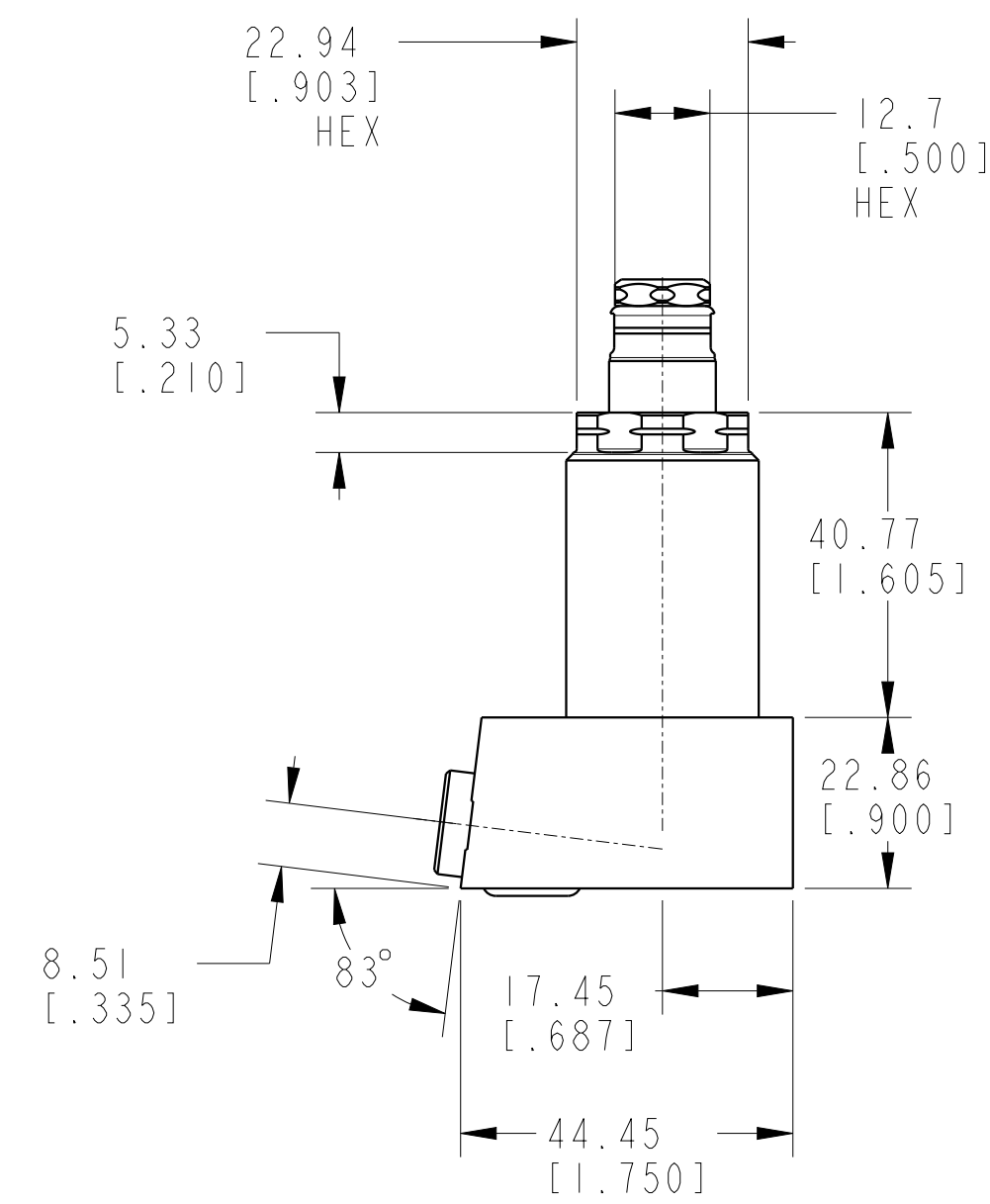
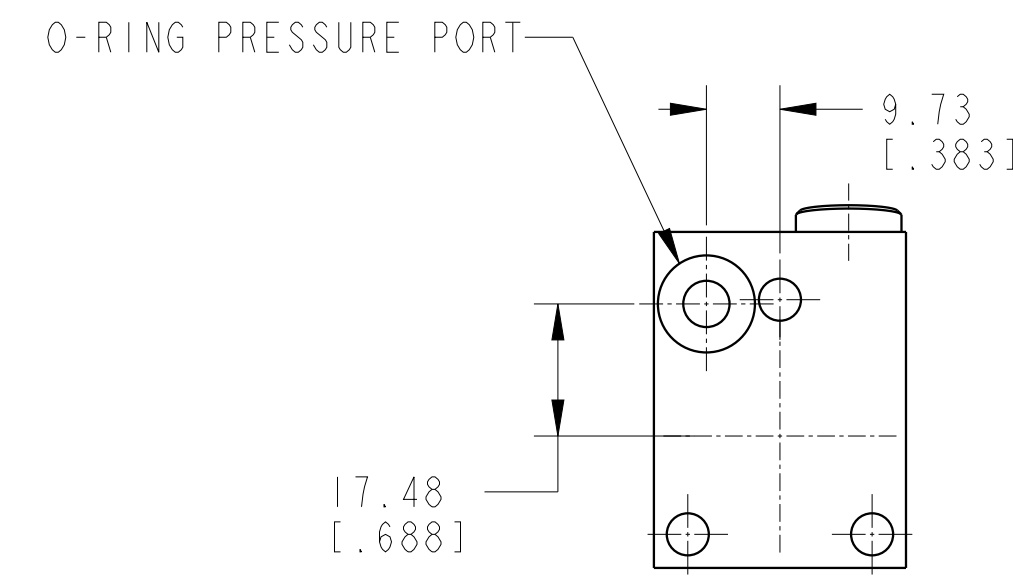
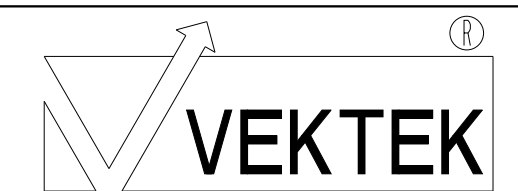


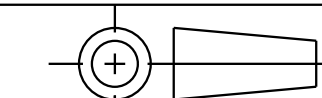
ILCMV41080616 REV A ECN4540



CAD CONTROL
DRAWING



VEKTEK, INC.
1334 E. SIXTH AVE. P.O. BOX 625
EMPORIA, KS. 66801 U.S.A.



| | | | | | | | |
|---------|------------------------|--|------------|----------|-------------------------|-----------|-----------------------------------|
| A | 4540 | RELEASE | RLK | 10/28/21 | 41080616 | A | WS, FA, BM, HC, 8.9kN, LS, 3 BOLT |
| REV | IN ACCORDANCE WITH ECN | EFFECTIVE DATE | REVISED BY | DATE | REFERENCE MODEL | REF REV | |
| DRW BY: | RLK | DRAWING STATUS: Released | | | TOLERANCES DO NOT APPLY | UNITS | SIZE |
| DATE: | 10/28/21 | PRODUCTION APPROVED FOR RELEASED STATUS ONLY | | | DIMENSIONS ARE NOMINAL | mm (inch) | D |
| | | | | | | | ILCMV41080616 |
| | | | | | | | REV A |