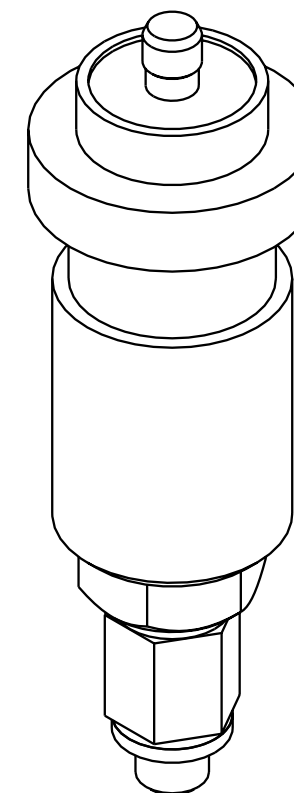
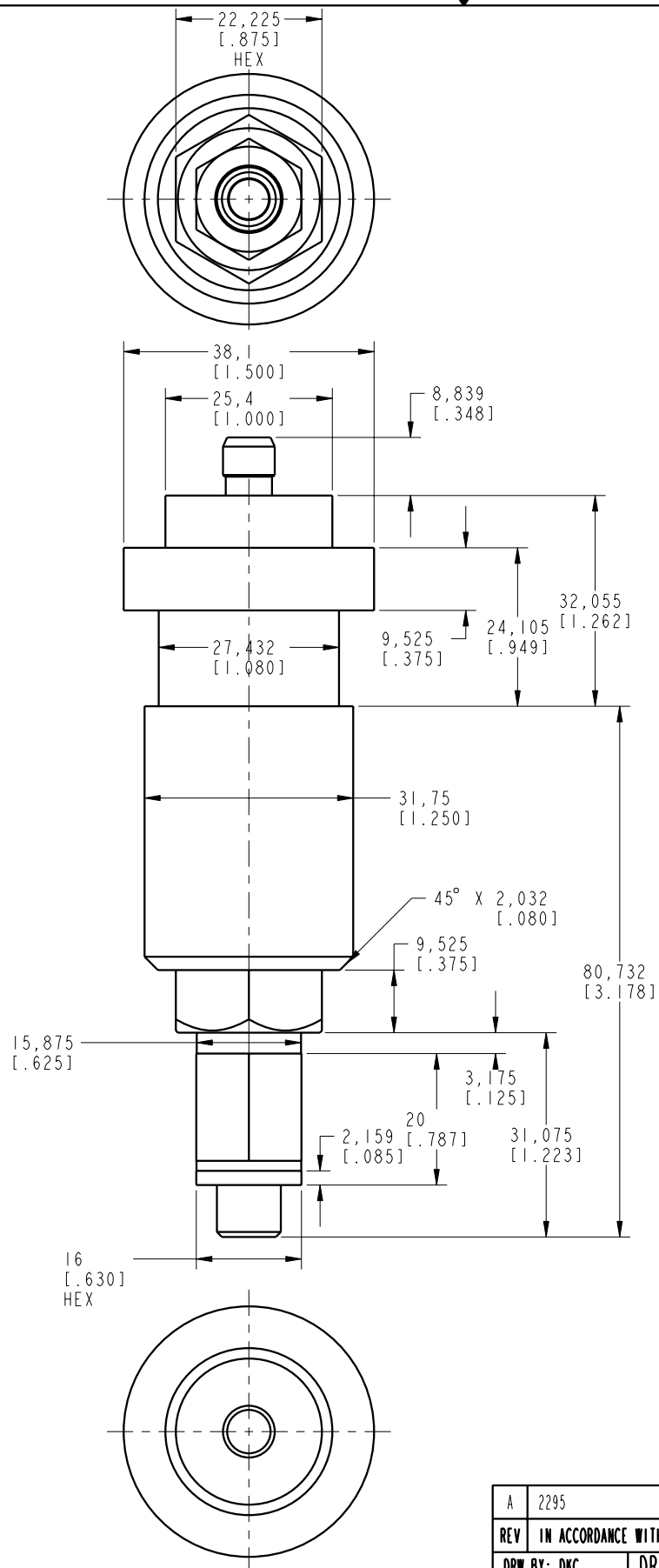


M8 3 PIN MALE CONNECTOR

1/8 BSPP MALE PORT



ILCMV47070074 REV A ECN 2295

CAD CONTROL DRAWING



VEKTEK, INC.
1334 E. SIXTH AVE. P.O. BOX 625
EMPORIA, KS. 66801 U.S.A.

A	2295	RELEASE	DKC	9-9-11	47070074	A	SWITCH, PRESS, M8 MALE
REV	IN ACCORDANCE WITH ECN	EFFECTIVE DATE	REVISED BY	DATE	REFERENCE MODEL	REF REV	''''
DRW BY:	DKC	DRAWING STATUS: Released			TOLERANCES DO NOT APPLY	UNITS	SIZE
DATE:	7-13-11	PRODUCTION APPROVED FOR RELEASED STATUS ONLY			DIMENSIONS ARE NOMINAL	mm [inch]	B
					ILCMV47070074	REV	A

FORM FEG036, Rev. A

SHEET 1 OF 1