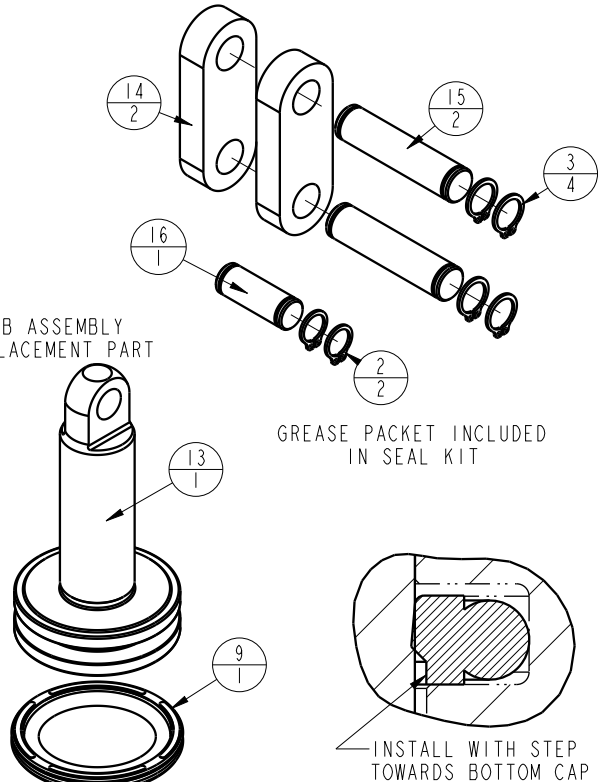
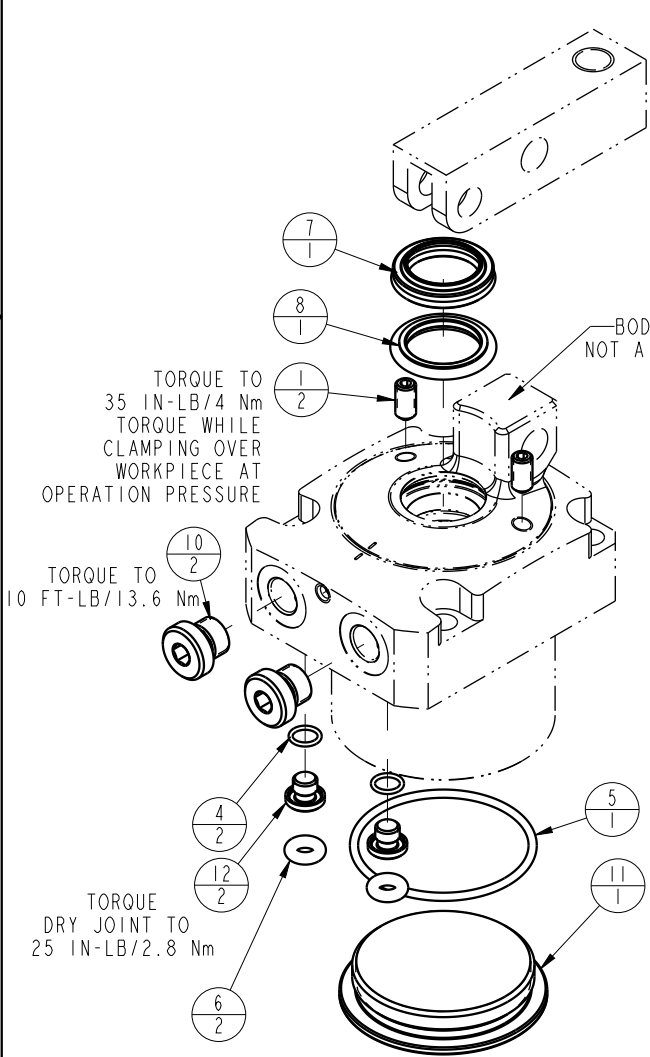


NO	QTY	PART NO	DESCRIPTION	SEAL KIT
1	2	21500318	SCREW, SET, CUP PT, M5 X .8 X 10	
2	2	23050034	RING, RTNG, EXT, 0.312	X
3	4	23050035	RING, RTNG, EXT, 0.354	X
4	2	39051079	O-RING, (6mm X 1)	X
5	1	39051083	O-RING, (41mm X 2)	X
6	2	39051087	O-RING, (4mm X 3)	X
7	1	39053042	SEAL, WIPER, SNAP IN, WED, 18, 94A, AU	X
8	1	39056002	SEAL, STEP, ROD, 18	X
9	1	39056013	SEAL, CAP, PISTON, 40, 94A, AU	X
10	2	43068004	PLUG, SOCH, G1/8	
11	1	81400153	CAP, LC/SC, 7MPα, 40B	
12	2	81400200	PLUG, MANIFOLD, 7MPα, M6	
13	1	81600142	PLUNGER, LC, 7MPα, 40B	
14	2	81600147	LINK, LC, 7MPα, 40B	
15	2	81600152	PIN, LINK, LC, 7MPα, 40B	
16	1	81600157	PIN, PLUNGER, LC, 7MPα, 40B	
N/A	N/A	L6016400	KIT, SEAL, LC, 7MPα, 40B	NOTED



DETAIL A  
SCALE 4.000

PARTS LIST		
	VEKTEK, INC. 1334 E. SIXTH AVE. P.O. BOX 625 EMPORIA, KS. 66801 U.S.A.	
ASSEMBLIES AFFECTED	PARTS LIST, ASSY, LC, 7MPα, 40B	
L1604000	ROTARY LUG	
SIZE	LPL1602	REV
A		C

C	3273	RELEASE	JDW	08/15/18
REV	IN ACCORDANCE WITH ECN	EFFECTIVE DATE	REVISED BY	DATE
DRW BY:	QMITCHELL	DRAWING STATUS: <b>Released</b>		
DATE:	7-16-13	PRODUCTION APPROVED FOR RELEASED STATUS ONLY		