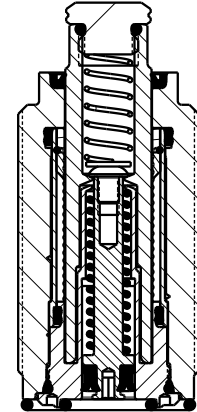




SEE ISI023 FOR SERVICE INSTRUCTIONS.
LUBRICATE ALL SEALS WITH CLEAN HYDRAULIC OIL
PRIOR TO ASSEMBLY.
DO NOT USE SILICONE BASED LUBRICANTS.



APPLY MEDIUM STRENGTH
THREAD LOCKER (BLUE)
TORQUE TO 9 Nm
80 IN-LB

TORQUE TO 1.25 Nm
11 IN-LB

PLUNGER
These work supports are fully
rebuildable to full factory original
capacity by any authorized Vektek repair
facility. All seals can be replaced by
any authorized repair facility.

BODY ASSEMBLY
-NOT REPLACEABLE
TORQUE TO 47.5 Nm
35 FT-LB

ASSEMBLE LIP
SIDE TOWARD
BOTTOM OF PISTON

NO	QTY	PART NO	DESCRIPTION	STD SEAL KIT	SPRING KIT
1	1	21410076	BHCS, 6-32 x 3/16 SELFLOCK, SST		
2	1	21430022	WASHER		
3	1	23355024	SPRING, COMPRESSION		X
4	1	23355025	SPRING, COMPRESSION		X
5	1	39000069	O-RING, (-903)	X	
6	1	39050008	O-RING, (-014)	X	
7	1	39050085	O-RING, (-022)	X	
8	1	39052057	SEAL, BEVEL, 3/32 X 5/32 X 11/32	X	
9	1	39054035	BU RING, (.157 X .089)	X	
10	1	41040604	BOLT, CONTACT, WS, FA, 6.2KN, LS		
11	1	81010618	PISTON, WS, FA, HC, 2000, LS		
12	1	39V53003	WIPER, PRESS-IN, (9/16), VBGV	X	
N/A	N/A	60100248	KIT, SEAL, WS, FA, CM, HC, 8.9KN, LS	NOTED	N/A
N/A	N/A	61100224	KIT, SPRING, WS, FA, HC, 2000, LS	N/A	NOTED
N/A	N/A	ISI023	INSTRUCTION SHEET	N/A	N/A

PARTS LIST



VEKTEK, INC.
1334 E. SIXTH AVE. P.O. BOX 625
EMPORIA, KS. 66801 U.S.A.

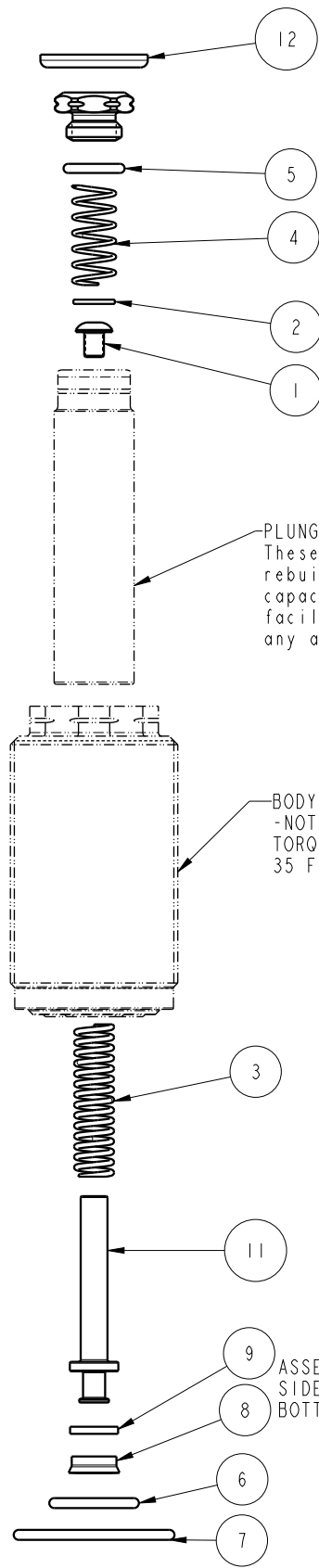
ASSEMBLIES AFFECTED
41070617

PARTS LIST, ASSY, WS, FA, CM, HC, 8.9KN, LS, M30
REPLACEMENT FOR 41017112

SIZE
A MPL1073

REV
A

FORM FEG035_PL_ASIZE, REV. B



A	4631	RELEASE	RLK	2/28/22
REV	IN ACCORDANCE WITH ECN	EFFECTIVE DATE	REVISED BY	DATE
DRW BY:	RLK	DRAWING STATUS: Released		
DATE:	11/4/21	PRODUCTION APPROVED FOR RELEASED STATUS ONLY		

SHEET 1 OF 1