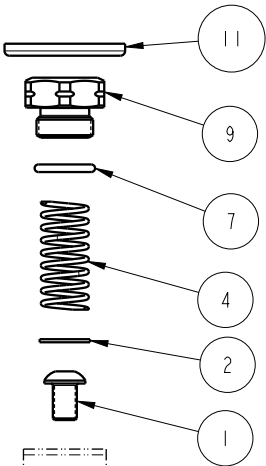


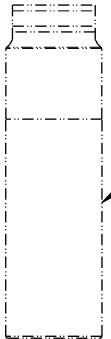


SEE IS1023 FOR SERVICE INSTRUCTIONS.  
LUBRICATE ALL SEALS WITH CLEAN HYDRAULIC OIL  
PRIOR TO ASSEMBLY.  
DO NOT USE SILICONE BASED LUBRICANTS.

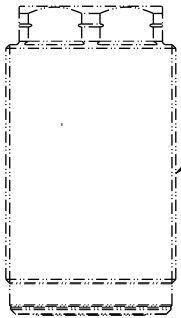
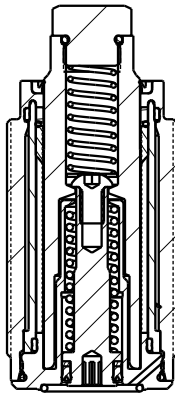


APPLY MEDIUM STRENGTH  
THREAD LOCKER (BLUE)  
TORQUE TO 21.69Nm (16 FT-LB)

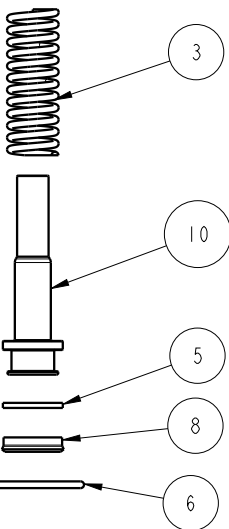
TORQUE TO  
4.5Nm (40 IN-LB)



PLUNGER  
These work supports are fully  
rebuildable to full factory original  
capacity by any authorized Vekttek repair  
facility. All seals can be replaced by  
any authorized repair facility.




BODY ASSEMBLY  
-NOT REPLACEABLE  
TORQUE TO 135.6Nm (100 FT-LB)



ASSEMBLE LIP  
SIDE TOWARD  
BOTTOM OF PISTON

NO	QTY	PART NO	DESCRIPTION	STD SEAL KIT	SPRING KIT
1	1	21410130	BHCS, 1/4-20 x 3/8, SELFLOCK, SST		
2	1	21430011	WASHER		
3	1	23350143	SPRING, COMPRESSION		X
4	1	23350144	SPRING, COMPRESSION		X
5	1	39010072	BU RING, (-111)	X	
6	1	39051175	O-RING, (-021)	X	
7	1	39051176	O-RING, 12mm X 2.0mm	X	
8	1	39052028	SEAL, U-CUP, 7/16 x 3/32 x 5/8	X	
9	1	41010839	BOLT, CONTACT, WS, FA, HC, 35.6kN		
10	1	81011002	PISTON, WS, FA, HC, 8000		
11	1	39V53005	WIPER,PRESS-IN, (1), VBGV	X	
N/A	N/A	60100154	KIT, SEAL, WS, FA, CM, HC, 35.6kN	NOTED	N/A
N/A	N/A	61100227	KIT, SPRING, WS, FA, HC, 8000	N/A	NOTED
N/A	N/A	IS1023	INSTRUCTION SHEET	N/A	N/A

<b>PARTS LIST</b>	 <b>VEKTEK</b> VEKTEK, INC. 1334 E. SIXTH AVE. P.O. BOX 625 EMPORIA, KS. 66801 U.S.A.
	ASSEMBLIES AFFECTED 41071010
PARTS LIST, ASSY, WS, FA, CM, HC, 35.6kN	SIZE A
MPL1076	REV A

A	4631	RELEASE	RLK	2/28/22
REV	IN ACCORDANCE WITH ECN	EFFECTIVE DATE	REVISED BY	DATE
DRW BY:	RLK	<b>DRAWING STATUS: Released</b>		
DATE:	11/22/21	PRODUCTION APPROVED FOR RELEASED STATUS ONLY		

SHEET 1 OF 1