

APPLY MEDIUM STRENGTH
THREAD LOCKER (BLUE)
TORQUE TO 21.69Nm (16 FT-LB)

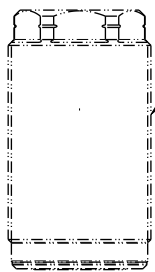


SEE IS1023 FOR SERVICE INSTRUCTIONS.
LUBRICATE ALL SEALS WITH CLEAN HYDRAULIC OIL
PRIOR TO ASSEMBLY.
DO NOT USE SILICONE BASED LUBRICANTS.



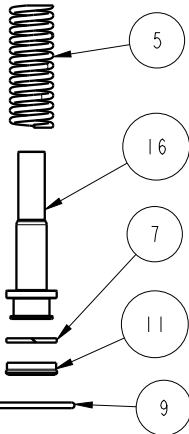
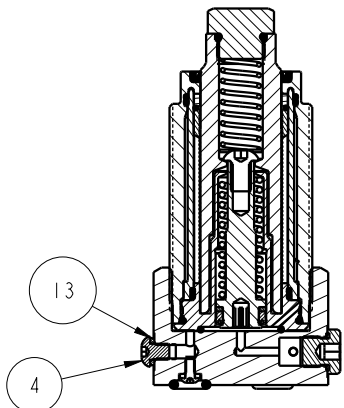
TORQUE TO
4.5kN (40 IN-LB)

PLUNGER
These work supports are fully
rebuildable to full factory original
capacity by any authorized Vekttek repair
facility. All seals can be replaced by
any authorized repair facility.



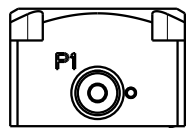
BODY ASSEMBLY
- NOT REPLACEABLE
TORQUE TO 135.6Nm (100 FT-LB)

TORQUE TO
5.7Nm (50 IN-LB)

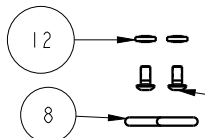


ASSEMBLE LIP
SIDE TOWARD
BOTTOM OF PISTON

TORQUE TO
13.5Nm (77 IN-LB)



TORQUE TO
1.24Nm (11 IN-LB)



TORQUE TO
1.24Nm (11 IN-LB)

| NO | QTY | PART NO | DESCRIPTION | STD SEAL KIT | SPRING KIT |
|-----|-----|----------|-----------------------------------|--------------|------------|
| 1 | 1 | 21410130 | BHCS, 1/4-20 x 3/8, SELFLOCK, SST | | |
| 2 | 1 | 21430011 | WASHER | | |
| 3 | 2 | 21500019 | SCREW, CAP, BTNH, M3 X 6, ALY | | |
| 4 | 1 | 21500046 | SCREW, CAP, BTNH, M5-0.8 X 6, ALY | | |
| 5 | 1 | 23350143 | SPRING, COMPRESSION | | X |
| 6 | 1 | 23350144 | SPRING, COMPRESSION | | X |
| 7 | 1 | 39010072 | BU RING, (-111) | X | |
| 8 | 2 | 39051012 | O-RING, (-109) | X | |
| 9 | 1 | 39051175 | O-RING, (-021) | X | |
| 10 | 1 | 39051176 | O-RING, 12mm X 2.0mm | X | |
| 11 | 1 | 39052028 | SEAL, U-CUP, 7/16 x 3/32 x 5/8 | X | |
| 12 | 2 | 39055011 | SEAL, BONDED, M3 | | |
| 13 | 1 | 39055013 | SEAL, BONDED, M5 | | |
| 14 | 1 | 41010839 | BOLT, CONTACT, WS, FA, HC, 35.6kN | | |
| 15 | 2 | 43068004 | PLUG, SOCH, G1/8 | | |
| 16 | 1 | 81011002 | PISTON, WS, FA, HC, 8000 | | |
| 17 | 1 | 91040618 | KIT, BASE, WS, FA, MM, HC, 35.6kN | | |
| 18 | 1 | 39V53005 | WIPER, PRESS-IN, (1), VBGV | X | |
| N/A | N/A | 60100144 | KIT, SEAL, WS, FA, BM, HC, 35.6kN | NOTED | N/A |
| N/A | N/A | 61100227 | KIT, SPRING, WS, FA, HC, 35.6kN | N/A | NOTED |
| N/A | N/A | IS1023 | INSTRUCTION SHEET | N/A | N/A |

| | |
|---------------------------------|---|
| <h2>PARTS LIST</h2> | |
| | <small>VEKTEK, INC. 1334 E. SIXTH AVE. P.O. BOX 625 EMPORIA, KS. 66801 U.S.A.</small> |
| ASSEMBLIES AFFECTED 41081020 | PARTS LIST, ASSY, WS, FA, BM, HC, 35.6kN |
| SIZE A | MPL1077 |
| DATE: 11/22/21 | REV C |

| | | | | |
|---------|------------------------|---|------------|---------|
| C | 5367 | RELEASE | BDC | 7/22/24 |
| REV | IN ACCORDANCE WITH ECN | EFFECTIVE DATE | REVISED BY | DATE |
| DRW BY: | RLK | DRAWING STATUS: Released PRODUCTION APPROVED FOR RELEASED STATUS ONLY | | |
| DATE: | 11/22/21 | | | |