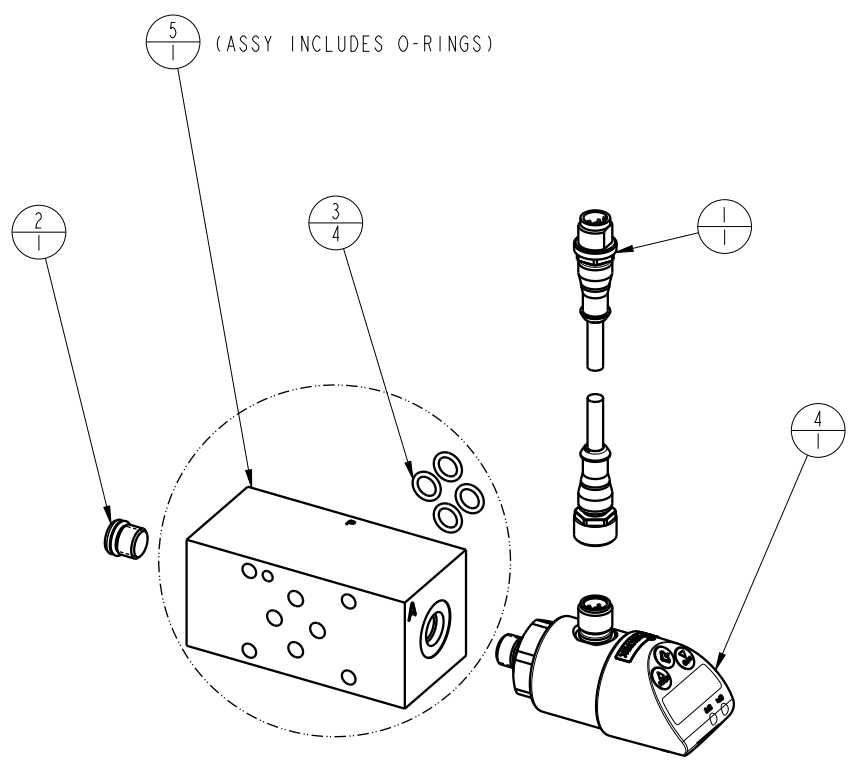
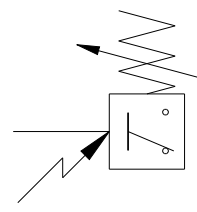


PARTS LIST  
NPN, ELECTRONIC PRESSURE SWITCH, A-B TAPPING PLATE

| NO  | QTY | PART NO  | DESCRIPTION                             |
|-----|-----|----------|-----------------------------------------|
| N/A | N/A | 95595466 | KIT, NPN, ELECT PRESS SWITCH, A PORT    |
| N/A | N/A | 95595467 | KIT, NPN, ELECT PRESS SWITCH, B PORT    |
| N/A | N/A | 95595468 | KIT, NPN, ELECT PRESS SWITCH, A-B PORT  |
| 1   | 1   | 27742203 | CABLE, M12 MALE, M12 FEMALE, 5 POLE, 5M |
| 2   | 1   | 30601144 | PLUG, SOCH, SAE 4                       |
| 3   | 4   | 55250005 | O-RING, (-011)                          |
| 4   | 1   | 70740075 | SWITCH, PRESSURE, ELCT, 5800 PSI, SAE 4 |
| 5   | 1   | 70942500 | ASSY, PLATE, TAPPING, A-B, DO3, THICK   |
| 6   | N/A | 1S7075   | INSTRUCTION SHEET, ELECT PRESS SWITCH   |



NOTE:  
 1. PROGRAM I.A.W 1S7079 WITH THE FOLLOWING EXCEPTIONS:  
 A. CHANGE OUTPUT 1 (Ou1) TO Hno (NORMALLY OPEN).  
 B. CHANGE SWITCHING LOGIC POL1 AND POL2 TO NPN.  
 C. CHANGE FUNCTION DISPLAY DISR to YES.  
 D. METRIC PUMPS ONLY, CHANGE UNITS (un1) TO BAR.