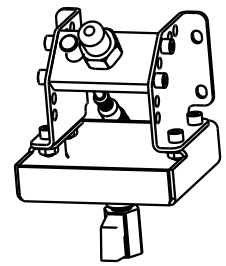
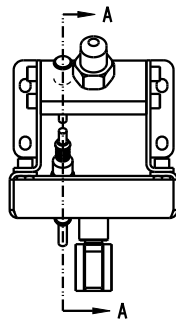


.610±.010
PROX SENSOR
HEIGHT FROM
DOCKING PLATE

SECTION A-A
SCALE 0.200



ORIENT PLATE
WITH MACHINED
SURFACE FACING UP

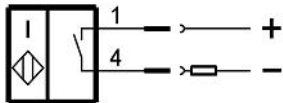
APPLY HIGH STRENGTH
THREAD LOCKER TO THREADS.
TIGHTEN TO 23 FT-LBS TORQUE
INSTALL INTO MACHINED SIDE OF PLATE

INSTALL MOUNTING TAB BETWEEN
1/4-20 SCREW AND DRAIN PAN

INSTALL LOCK NUT ON BACKSIDE OF
DOCKING STATION PLATE

4X
APPLY MEDIUM STRENGTH
THREAD LOCKER TO THREADS.
TIGHTEN TO 7 FT-LBS TORQUE

PROX SENSOR WIRE DIAGRAM



PROX SENSOR PINOUT



4X
APPLY MEDIUM STRENGTH
THREAD LOCKER TO THREADS.
TIGHTEN TO 7 FT-LBS TORQUE

INSTALL BENEATH DRAIN
PAN FLANGE

9	1	85600563	PLATE, DOCKING STATION, QD TRIGGER COUPLER
8	1	85600548	WELDMENT, DOCKING STATION, DRAIN PAN
7	2	85600547	TAB, MOUNTING, DOCKING STATION
6	1	85600546	BLANK, COUPLING, QUICK CONNECT
5	1	70300730	VALVE, BALL, 1/4 NPT
4	1	29700105	SENSOR, PROX, M12 W/M12 CONNECTOR
3	1	27642201	CABLE, M12 FEMALE, PIGTAIL, 5 POLE, 2M
2	4	21420009	NUT, HEX, 1/4-20
1	8	21410063	S.H.C.S. 1/4-20 UNC X .50 LG.
No.	QTY	PART No.	DESCRIPTION

WEIGHT 3.00 LBS

PARTS LIST



VEKTEK, INC.
1334 E. SIXTH AVE. P.O. BOX 625
EMPORIA, KS. 66801 U.S.A.

ASSEMBLIES AFFECTED
56000807

PARTS LIST, ASSY, DOCKING STATION, QD TRIGGER COUPLER, PROX SENSOR

A	5059	RELEASE	JDW	03/24/23
REV	IN ACCORDANCE WITH ECN	EFFECTIVE DATE	REVISED BY	DATE
DRW BY:	JDW	DRAWING STATUS: Released		
DATE:	03/24/23	PRODUCTION APPROVED FOR RELEASED STATUS ONLY		

SIZE
A PL5648

REV
A

FORM FEG035_PL_ASIZE, REV. B

SHEET 1 OF 1