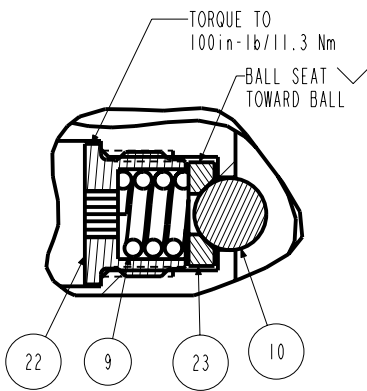
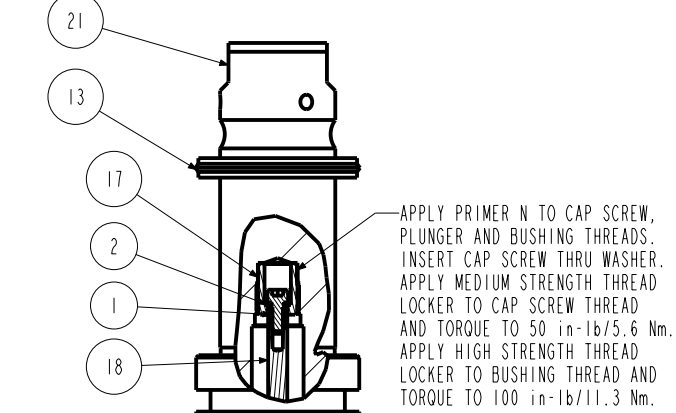


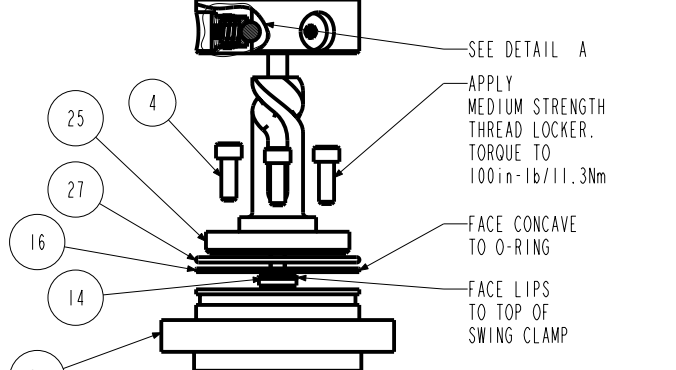
APPLY LUBRICANT TO ALL SEALS  
PRIOR TO INSTALLATION.  
DO NOT USE SILICONE TYPE LUBRICANTS.  
FOR PROPER ARM MOUNTING SEE IS1505.



DETAIL A  
SCALE 1.500



APPLY PRIMER N TO CAP SCREW,  
PLUNGER AND BUSHING THREADS.  
INSERT CAP SCREW THRU WASHER.  
APPLY MEDIUM STRENGTH THREAD  
LOCKER TO CAP SCREW THREAD  
AND TORQUE TO 50 in-lb/5.6 Nm.  
APPLY HIGH STRENGTH THREAD  
LOCKER TO BUSHING THREAD AND  
TORQUE TO 100 in-lb/11.3 Nm.



SEE DETAIL A  
APPLY  
MEDIUM STRENGTH  
THREAD LOCKER.  
TORQUE TO  
100in-lb/11.3Nm  
FACE CONCAVE  
TO O-RING  
FACE LIPS  
TO TOP OF  
SWING CLAMP  
TORQUE TO  
13ft-lb/17.6 Nm  
APPLY LOW STRENGTH  
THREAD LOCKER. TIGHTEN  
TO 11in-lb/1.2Nm TORQUE.  
APPLY LOW STRENGTH  
THREAD LOCKER.  
TIGHTEN SCREW AGAINST  
MAGNET TO PREVENT ANY  
MAGNET MOVEMENT.  
CAUTION: DO NOT CRACK MAGNET  
APPLY LOW STRENGTH  
THREAD LOCKER. TIGHTEN  
TO 11in-lb/1.2Nm TORQUE.

N/A	N/A	IS1505	INSTRUCTION SHEET, ARM INSTALLATION		
N/A	N/A	6V711054	SEAL KIT, FKM		
N/A	N/A	60711054	SEAL KIT, STANDARD		
30	1	39V11051	WIPER, PRESS-IN, (1-1/2)	X	X
29	1	39V10029	WIPER, PRESS-IN, (1/4)	X	X
28	1	39H52000	SEAL, U-CUP, 1-1/2 x 1/8 x 1-3/4	X	39V52000
27	1	39H51002	O-RING, (-033)	X	39V51002
26	1	91100001	MAGNET, .130 x .312, PS		
25	1	81592132	CAM, SC, LP, 7500/33KN, LH, TC, PR		
24	1	81532115	CAP, END, SC, LP, 33KN/7500, PR		
23	3	81532108	SEAT, BALL, SC, LP, TC		
22	3	81532107	RETAINER, SC, LP, TC		
21	1	81512121	PLUNGER, SC, LP, 7500/33KN, DA, TC, PR		
20	1	81500061	HOUSING, PS, MAG, SC, LP		
19	1	81500060	ADAPTOR, PS, MAG, SC, LP		
18	1	81500051	ROD, ACTUATOR, SC, LP, TF, 7500/33KN		
17	1	81500039	BUSHING, PLUNGER, PR, SC, LP		
16	1	39054017	BU RING, (-033)	X	39054023
15	1	39054016	BU RING, (1.5x.125x.063)	X	X
14	1	39052043	SEAL, LL, (1/4 X 1/8 X 1/8 X 1/2)	X	39V52043
13	1	39052030	SEAL, CROWN, 1-3/4x2-1/8x1/4	X	39V52030
12	2	39050042	O-RING, (-011)	X	39051025
11	2	30601144	PLUG, SOCH, SAE 4		
10	3	23650004	BALL, TUNGSTEN-CARBIDE .250		
9	3	23350066	SPRING, COMPRESSION		
8	10	21500304	SHCS, M6 X 1.0-6G X 20MM		
7	2	21500200	WASHER		
6	1	21500044	SCREW, CAP, BTNH, M3-0.5 X 6, SSTL		
5	3	21500043	SHCS, M3-0.5 X 6 ALY		
4	3	21500031	SHCS, M5 X 0.8 X 14, ALY		
3	2	21500019	SCREW, CAP, BTNH, M3 X 6, ALY		
2	1	21430022	WASHER		
1	1	21410049	SCREW, CAP, SOCH, 8-32 X 3/8, ALY		
No.	QTY	PART No.	DESCRIPTION	Std. Seal Kit	FKM Seal Kit

**PARTS LIST**



VEKTEK, INC.  
1334 E. SIXTH AVE. P.O. BOX 625  
EMPORIA, KS. 66801 U.S.A.

ASSEMBLIES AFFECTED  
14062101PS  
14062101FPS

**PARTS LIST, ASST, SC, LP, TC, TF, 7500, DA, LH, PS**

SIZE  
A **PL7214**

REV  
A

SHEET 1 OF 1

A	2679	RELEASE	JDW	12/06/13
REV	IN ACCORDANCE WITH ECN	EFFECTIVE DATE	REVISED BY	DATE
DRW BY:	JDW	<b>DRAWING STATUS: Released</b>		
DATE:	10/16/13	PRODUCTION APPROVED FOR RELEASED STATUS ONLY		

