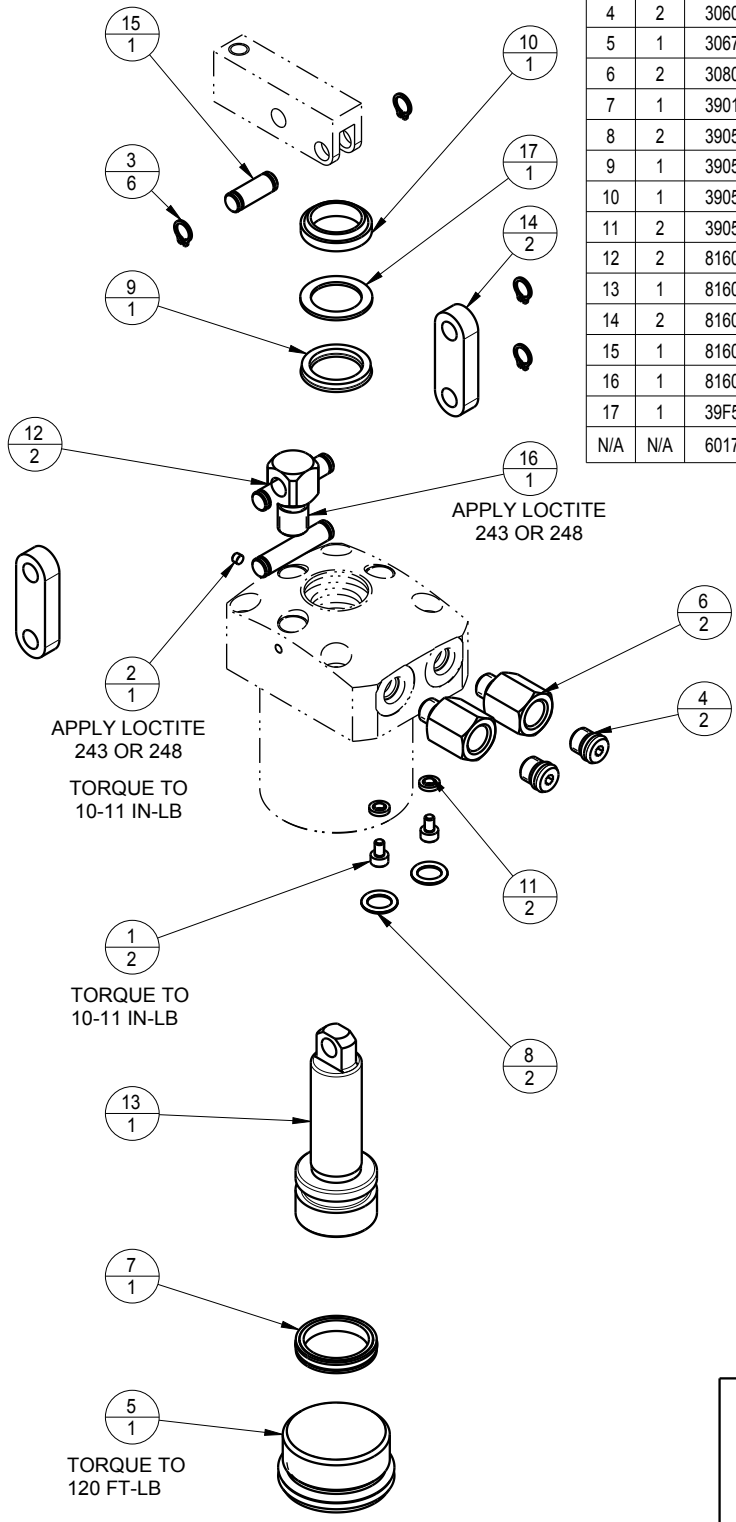



NO	QTY	PART NO	DESCRIPTION	STD SEAL KIT
1	2	21500018	SCREW, CAP, SOCH, M3 X 5, ALY	
2	1	21500314	SCREW, SET, CONE PT, M3 X .5-6g X 3	
3	6	23050021	RING, RTNG, EXT, 0.250	X
4	2	30601122	PLUG, SOCH, SAE 2	
5	1	30670006	PLUG, SAE 16, FKM	X
6	2	30801422	ADAPTER, MALE SAE 2 - FEMALE 1/8 NPT	
7	1	39010023	SEAL, T, (13/16 X 5/32 X 1)	X
8	2	39051025	O-RING, (-011)	X
9	1	39052018	SEAL, U-CUP, 5/8 x 1/8 x 7/8	X
10	1	39053027	WIPER, SNAP-IN, (5/8)	X
11	2	39055011	SEAL, BONDED, M3	
12	2	81600081	PIN, LC, LONG, 450	
13	1	81600089	PLUNGER, LC, LPRESS, 550/2.5 KN, DA	
14	2	81600095	LINK, LC, LPRESS, 550/2.5 KN	
15	1	81600098	PIN, LC, SHORT, LPRESS, 550/2.5 KN	
16	1	81600104	PIVOT, LC, LPRESS, 550/2.5 KN	
17	1	39F54001	BU RING, (-208 CUSTOM)	X
N/A	N/A	60170201	KIT, SEAL, LC, PNEU, 1	NOTED



SILICONE ~~SEALS~~ APPLY LUBRICANT TO ALL SEALS PRIOR TO ASSEMBLY.

PARTS LIST			
	VEKTEK, INC. 1334 E. SIXTH AVE. P.O. BOX 625 EMPORIA, KS. 66801 U.S.A.		
	PARTS LIST, PNEU, 1, DA		
ASSEMBLIES AFFECTED	P1662110	P1662111	P1662112
SIZE	A PPL1660		REV C

C	2741	RELEASE	GAR	6/21/17
REV	IN ACCORDANCE WITH ECN	EFFECTIVE DATE	REVISED BY	DATE
DRW BY: G. ROMINE	DRAWING STATUS: Released			
DATE: 6-04-07	PRODUCTION APPROVED FOR RELEASED STATUS ONLY			