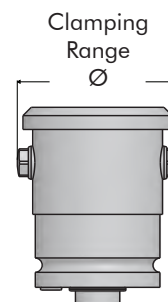


Special Use Clamps

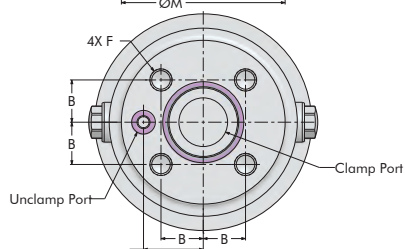
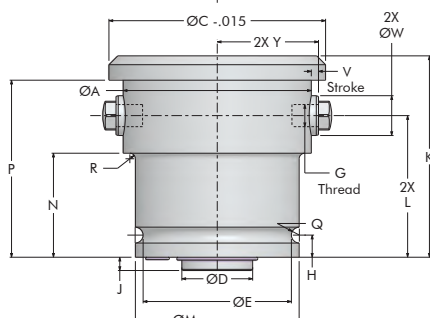
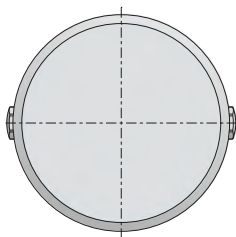
Centering Clamp, Large Bore – 2 Point Contact

Double Acting

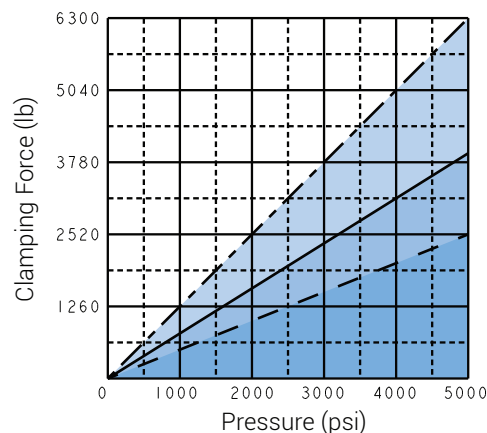
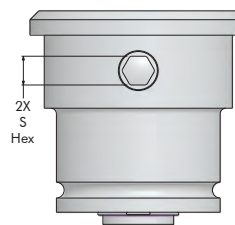
- Often used when trying to locate using 2 bores on the same part. Use the 3 point Centering Clamp for the first bore, the 2 point unit for the second bore often in an engine block. This allows for minimal part variance of the second bore in a third "clocking" axis, while centralizing both. Functioning similar to using round and diamond locators.
- Bore clamp with 2 points used for concentric positioning of a bore, internal clamping expands radially to center the bore.
- Capable of moving a part approximately 0.100" after the part is placed over the center mandrel.
- The clamping points retract for easy loading.
- Repeatability of $\pm .001$ ".
- May be manifold mounted as shown or purchase the optional Mounting Plate for bolt-down or access to porting when mounting.
- Fits bore sizes from 2.13" to 5.12".
- Can be used to center a slot, cavity, or other non-round feature, but normally the 2nd bore in 1 part. Requires the use of fixed stops and or additional clamps to resist direct rotational torque.



ILS158205 REV B



ILS158206 REV B



*Clamp force is the specified force divided by the number of clamping points 1/2 force per point.

Model No.	A	B	C	D	E	F	G	H	J	K	L	M	N	P	Q	R	S	T	V	W	Y
15-8219-00			2.122	.6297																	
15-8221-00	1.77	.445	2.398	.6293	1.575	M6-1.0 x .47		.315		2.56	1.77	1.77	N/A	2.24	.10	N/A	.39	.661	.16	.47	.90
15-8224-00			2.673																		
15-8226-00			2.988				M6														
15-8229-00	2.56	.614	3.264	.9840	2.126	M8-1.25 x .63		.354	.236	3.03	2.21	2.36	1.61	2.68	.12	.02	.43	.866	.20	.55	1.28
15-8231-00			3.539	.9835																	
15-8234-00			3.854																		
15-8237-00	3.35	.752	4.287	1.2595	2.638	M10-1.5 x .79	M8	.394		3.58	2.52	2.91	1.85	3.15	.14	.1	.51	1.063	.27	.71	1.67
15-8241-00			4.681	1.2589																	