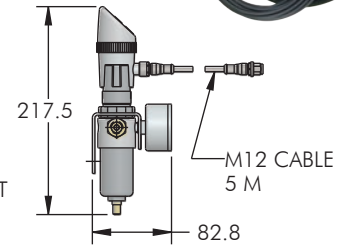
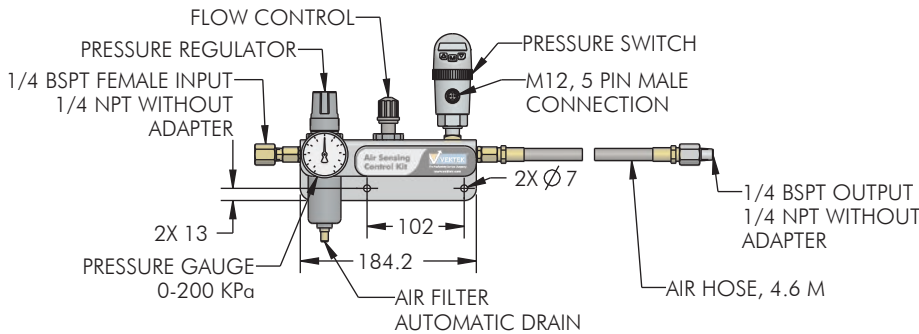
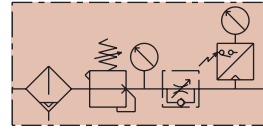


## NEW Air Sensing Control Kit for Pneumatic Confirmation Systems

- Adjustable air pressure and flow gives you the ability to monitor most confirmation valves, part present or clamp position systems.
- Easy electronic pressure switch adjustment with 2 PNP\* digital set points and 1 analog output to meet your specific needs.
- Can be used with Pallet Decouplers, Pneumatic Confirmation Valves, Part Present Sensing Work Supports or self-made part location orifices.
- Ready-to-use kit with everything you need to feed back a confirmation signal of your choice!



ILMV450800 REV A

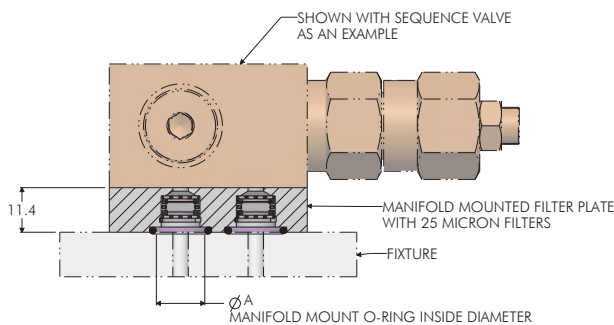
### Specifications

Model No.	Max Air Pressure(KPa)	Operating Pressure Range (KPa)	Max Air Flow Rate (CM/H)	Filtration Element (micron)	Power Supply (VDC)	Power Consumption (mA)	2 Digital Contacts	1 Analog Output
45-0824-00	1379	0-172	20	5	15-32	50	N/O or N/C	0-10V or 4-20 mA

\* For NPN applications order signal converter cable 27-8420-00.

## NEW Subplate isolation filters to protect your valves from debris and contamination

- Compact sandwich subplate design adds only 11.4 mm to the device height.
- Filter Plate dimensions match the mating product footprint. (See mating product catalog specifications)
- 25 micron filters are easily replaceable.
- Service kits available for easy and simple maintenance.



ILMV708403 REV A

### Filter Plates

Model No.	Valve Type	Used With Model No.	A (in.)
47-0842-01	Combination Sequence & Pressure Reducing Valve	47-0940-00 47-0940-01 47-0940-02 47-0940-03	12
47-0842-02	Pressure Reducing Valve	47-0540-01 47-0540-03	12
47-0842-03	Sequence Valve	47-0440-02 47-0440-03	12
47-0842-04	Sequence Valve Manifold Mount Only	47-0440-10 47-0440-11	12
47-0842-05	Pallet Decoupler Bottom Mount	45-6007-03, 45-6007-20 45-6007-21, 45-6007-22 45-6007-23, 45-6007-24 45-6007-25, 45-6007-26 45-6007-27, 45-6007-28 45-6007-29, 45-6007-30 45-6007-31, 45-6007-32 45-6007-33, 45-6007-34 45-6007-35	18
47-0842-06	Pallet Decoupler Rear Mount	45-6007-03, 45-6007-20 45-6007-21, 45-6007-22 45-6007-23, 45-6007-24 45-6007-25, 45-6007-26 45-6007-27, 45-6007-28 45-6007-29, 45-6007-30 45-6007-31, 45-6007-32 45-6007-33, 45-6007-34 45-6007-35	18

M-4