

Directional Control Valves

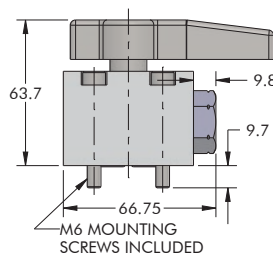
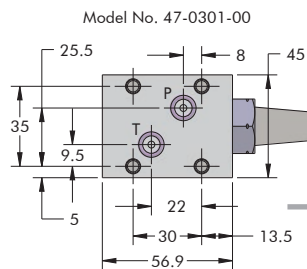
Manual Seat Valve 2-Position 2-Port / 2-Position 3-Port

Manual 2-Position 2-Port Seat Valve

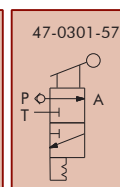
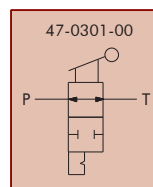
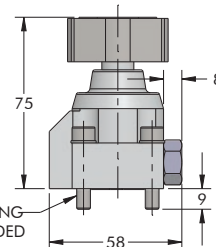
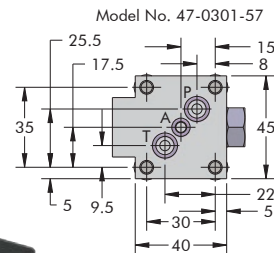
Manual 2-Position 3-Port Seat Valve

- Oil channel can be closed or open by means of a manual 2-Position 2-Port seat valve.
- Manual 2-Position 3-Port seat valve allows determination of oil flow direction.
- Seat valve has complete hydraulic pressure compensation and negative switching.
- Position of installation is optional.

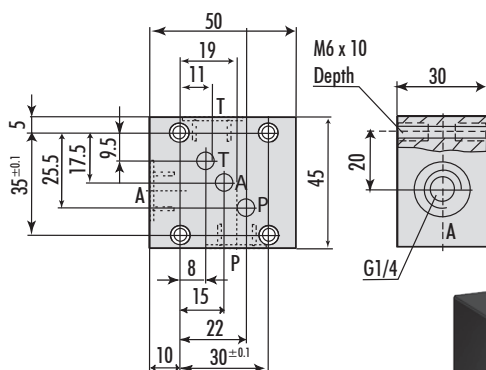
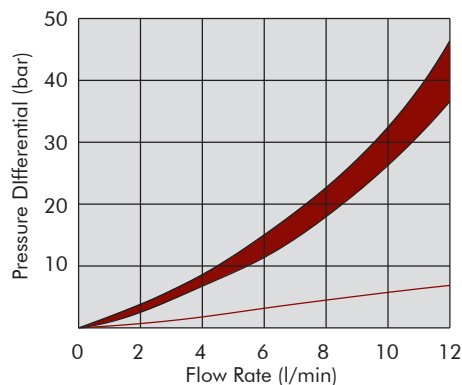
NOTE: The flow direction must be the direction of the arrow according to the symbol. The position of installation is optional.



ILMV703000 REV A



Specifications			
Model No.	Valve Type	Fluid Flow Maximum (l/min)	Maximum Operating Pressure Bar (MPa)
47-0301-00	2 Position 2 Port	5.7	350 (35)
47-0301-57	2 Position 3 Port	12	500 (50)



Specifications			
Model No.	Dimensions	Connection	Weight (g)
47-0941-57	50 x 45 x 30	3 x G 1/4	450

For pipe connection in combination with:

- 3/2-way Seat Valve Model No. 47-1112-52
- 2/2-way Manual Seat Valve Model No. 47-0301-56
- 3/2-way Manual Seat Valve Model No. 47-0301-57



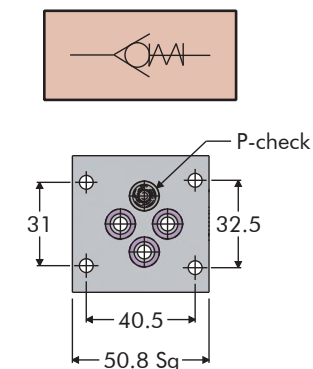
Directional Control Valves

CETOP 3 Mounted Pressure Check Valve Sandwich Plate & Sub-plate

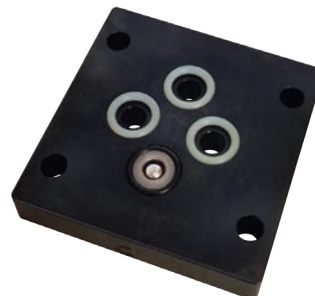
CETOP 3 Mounted Pressure Check Valve Sandwich Plate

- P-Check Valve prevents pressure drop in the pressure line of the valve.
- Valve plate is installed between the valve and the supply manifold.

Model No.	Contents
47-0342-55	Contains P-Check Valve Plate

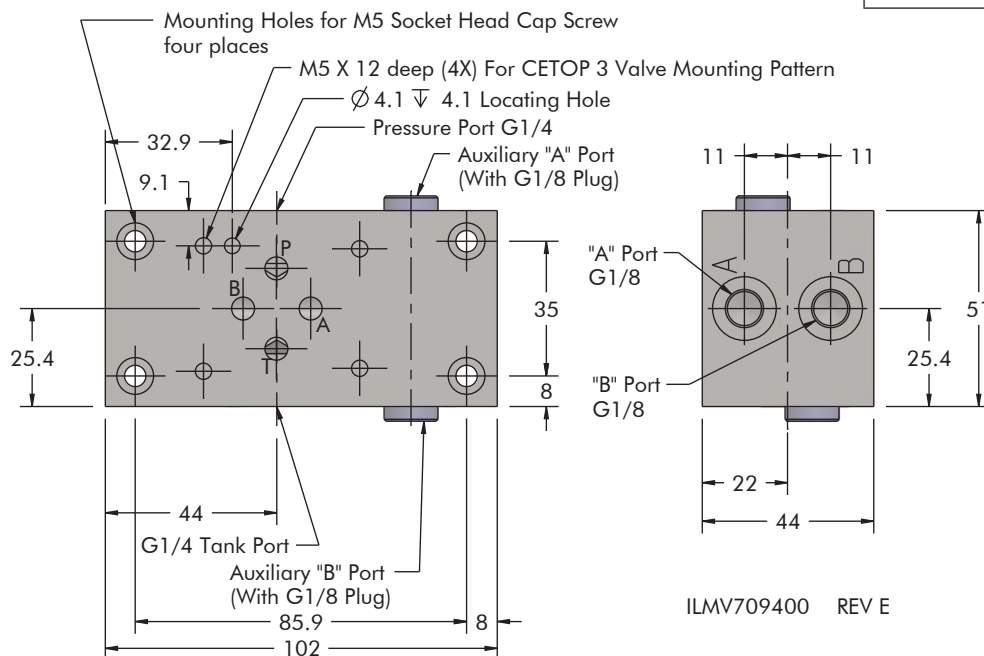


9.65
P
ILMV711107 REV B



CETOP Sub-plate

Model No.	Description
47-0941-10	Subplate, Valve, CETOP 3



ILMV709400 REV E

N-6