

Work Supports

Part Present Sensing, High Capacity, Fluid Advance

NEW

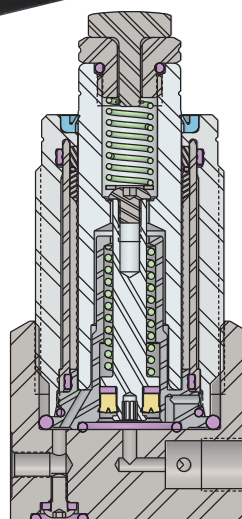
B-7

Confirm part is present and contacted even on as-cast surfaces!

Plungers stay retracted during part loading while air flow travels through the work support. Hydraulic pressure advances the plunger exerting only spring force as it makes contact with the part. This closes the integral air valve to indicate part is present and contacted. Hydraulic pressure then automatically sequences, "freezing" the plunger.

- Available in 8.9 kN or 17.8 kN capacity.
- Order with four bolt base or cartridge only.
- Once support is locked, air sensing positively confirms both contact and part present.
- Use Vektek's Air Sensing Control Kit 45-0824-00 for easy setup.
- Four bolt base is compatible with Vektek In The Port Flow Control and In The Port Sequence Valves.
- Uses Vektek's BHC technology to guard against corrosion.
- O-Ring face seal design makes machining cavities easier.
- Max air operating pressure is 1 bar.

Standard G-Series porting and alternate O-Ring manifold face seal is located in the base of the support for bolt down installation. The base can be removed for direct cartridge mounting.



Now with Part Present Sensing built in!

ILMV100724 REV D
U.S. PATENT NO. 10,799,992

Specifications

Model No.	Support Capacity (kN)*	Mounting Style***	Contact Force (N)	Stroke (mm)	Base Dimensions (mm)	Retracted Height (mm)	Working Oil Capacity (cm ³)**	Port X Depth for Optional In-Port Valves****
Fluid Advance Work Supports, hydraulic pressure pushes a spring which lifts plunger, hydraulic pressure locks in place.								
41-0706-10-PS	8.9	Cartridge	4.4-26.7	6.5	M26 x 1.5	57.8	0.8	N/A
41-0706-16-PS				12.5		70.6	1.1	
41-0806-20-PS	8.9	Base/Manifold	4.4-26.7	6.5	37 x 36 x 36	74.8	0.8	G1/8 x 15.16
41-0806-26-PS				12.5		87.5	1.1	
41-0708-10-PS	17.8	Cartridge	13.5-44.5	6.5	M35 x 1.5	77.2	3.3	N/A
41-0708-16-PS				12.5		89.7	3.7	
41-0808-20-PS	17.8	Base/Manifold	13.5-44.5	6.5	37 x 44 x 44	94.2	3.3	G1/8 x 15.16
41-0808-26-PS				12.5		106.8	3.7	

* Support capacities are listed at 350 Bar maximum pressure. Support capacities for other pressures are shown in the fluid advance High Capacity and Part Present Sensing load capacity chart.

** Restrict flow rate to a maximum of 2.13 l/min.

*** For cartridge mount models, see cavity dimensions drawings in this catalog section.

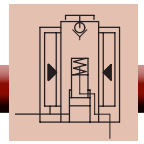
**** For complete dimensions, see fluid advance work supports (Section B)

PORT
DEVICE READY

NOTE: The maximum system back-pressure a fluid advance work support can overcome is 0.7 bar (0.07 MPa). Returning back-pressure greater than 0.7 bar (0.07 MPa) may cause slow or failed retraction.

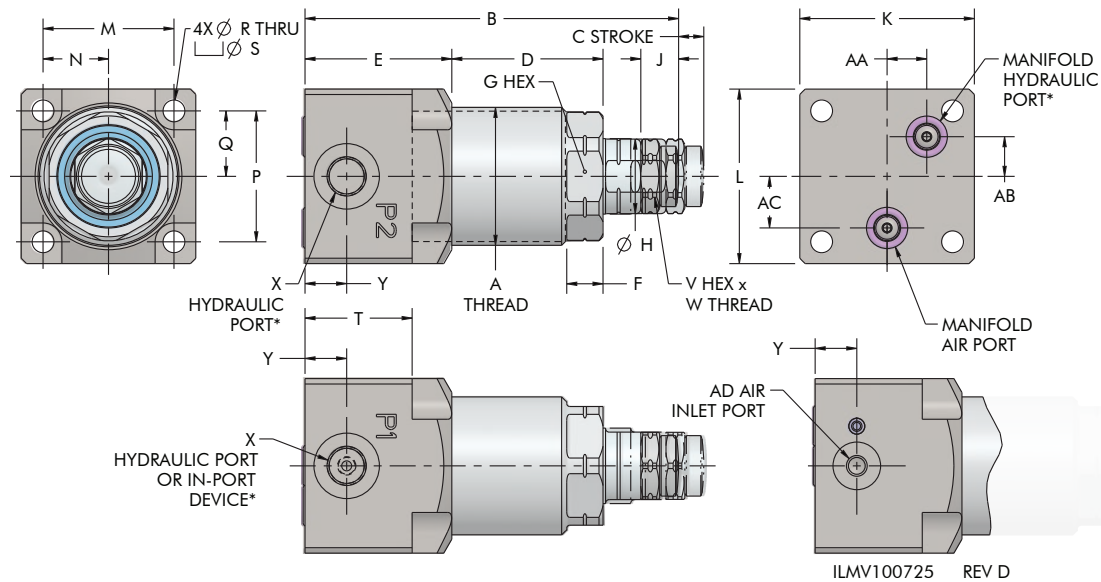


Work Supports



Part Present Sensing, High Capacity, Fluid Advance

B-8



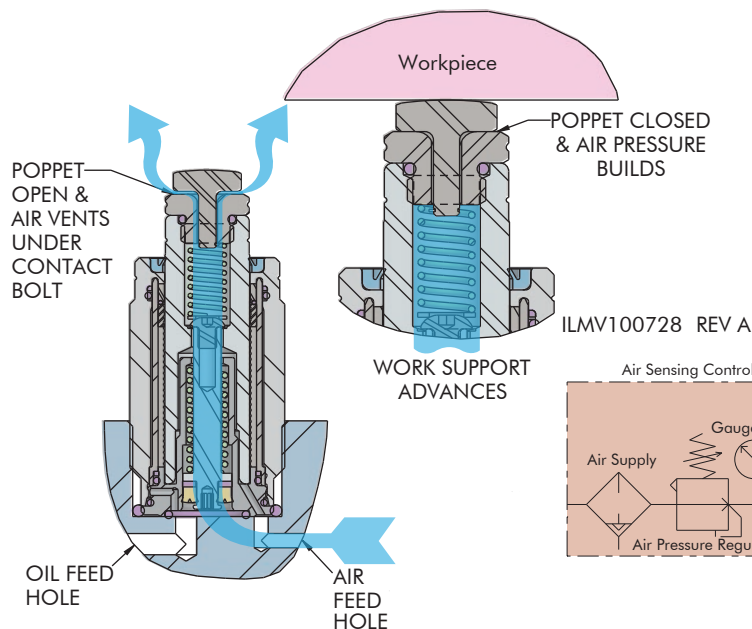
*THE P1, P2 AND MANIFOLD PORTS ARE ALL CONNECTED AND ANY OF THEM CAN BE CHOSEN TO CONNECT HYDRAULIC PRESSURE. IN-PORT DEVICES CAN ONLY BE INSTALLED IN P1.

Cartridge Dimensions

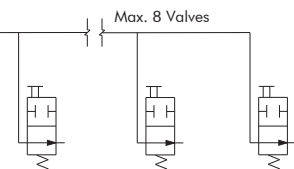
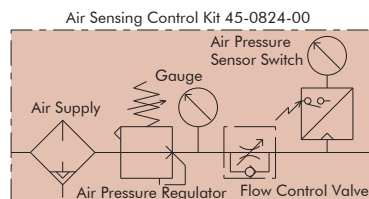
Model No.	A	B	C	D	E	F	G	H	J	K	L	M	N	P	Q
41-0806-20-PS	M26 X 1.5	74.8	6.5	23.7	37	5.3	23	14.3	7.1	36	36	27	13.5	27	13.5
41-0806-26-PS	M26 X 1.5	87.5	12.5	35.4	37	5.3	23	14.3	7.1	36	36	27	13.5	27	13.5
41-0808-20-PS	M35 X 1.5	94.2	6.5	38.1	37	9.3	30	19	9.5	44	44	33	16.5	33	16.5
41-0808-26-PS	M35 X 1.5	106.8	12.5	47.9	37	9.3	30	19	9.5	44	44	33	16.5	33	16.5

Model No.	R	S	T	V	W	X	Y	AA	AB	AC	AD
41-0806-20-PS	4.5	8	28	11	M8 x 1.25 x 5	G1/8	10.5	7	7	9	M5 x .8
41-0806-26-PS	4.5	8	28	13	M10 x 1.50 x 5	G1/8	10.5	7	7	9	M5 x .8
41-0808-20-PS	5.5	9.5	27	17	M12 x 1.75 x 6.5	G1/8	10.5	10	10	13	M5 x .8
41-0808-26-PS	5.5	9.5	27	17	M12 x 1.75 x 6.5	G1/8	10.5	10	10	13	M5 x .8

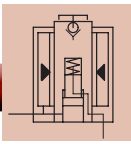
PART PRESENT SENSING WORK SUPPORT AIR FLOW



For proper sealing, the mating surface must be flat within 0.08 mm with a maximum surface roughness of 1.6 μm R_a .



ILMV504087 REV C



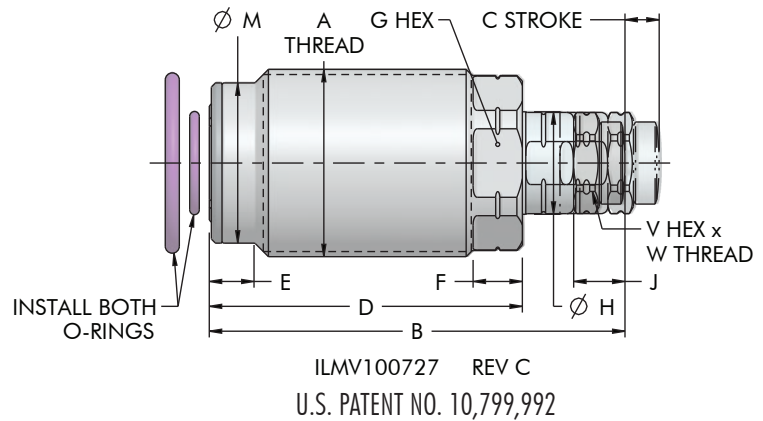
Work Supports

Part Present Sensing, High Capacity, Fluid Advance

B-9

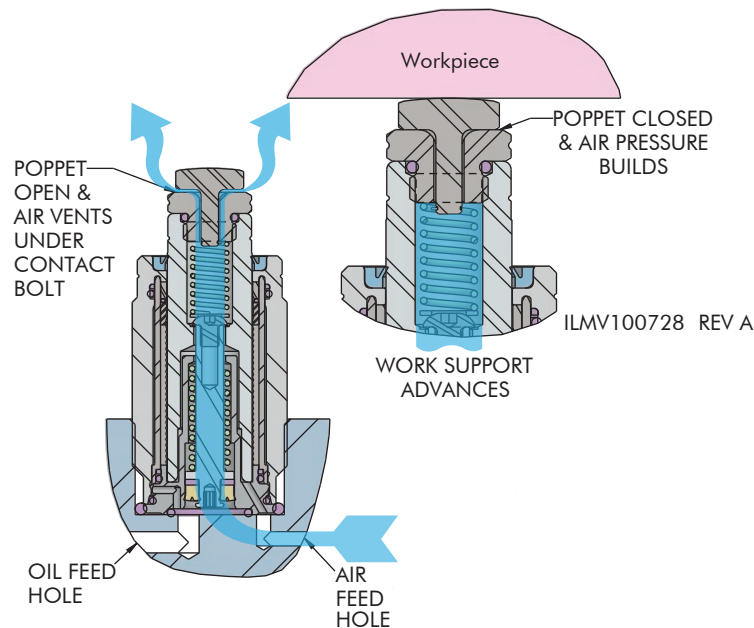
Fluid Advance Part Present Sensing Cartridge Mount Cavity Check List ✓

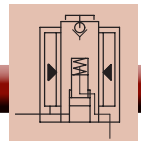
- ☐ Confirm capacity of item selected.
- ☐ Note the sealing surface finish requirements.
- ☐ Minimum depth specification represents the nominal depth of the standard Vektek base dimension.
- ☐ Confirm cavity drawing is appropriate for the model number used.
- ☐ Note specified thread depth when cutting threads.
- ☐ When using a bottoming tap tool, modifications may be required.
- ☐ When hand tapping threads, perpendicularity is essential.



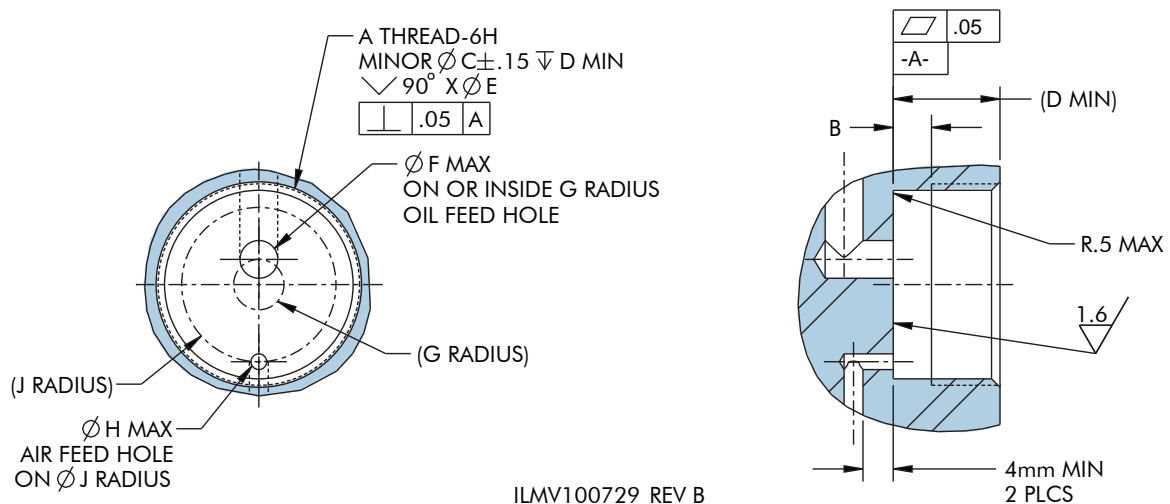
Dimensions												
Model No.	A	B	C	D	E	F	G	H	J	M	V	W
Cartridge Mount, High Capacity Fluid Advance Work Support												
41-0706-10-PS	M26 x 1.5	57.8	6.5	43.7	6.3	5.5	23	14.3	7.1	23.3	11	M8 x 1.25 x 5
41-0706-16-PS	M26 x 1.5	70.6	12.5	55.4	6.3	5.5	23	14.3	7.1	23.3	13	M10 x 1.5 x 5
41-0708-10-PS	M35 x 1.5	77.2	6.5	58.1	8.5	9.3	30	19	9.5	29.7	17	M12 x 1.75 x 6.5
41-0708-16-PS	M35 x 1.5	89.7	12.5	67.9	8.5	9.3	30	19	9.5	29.7	17	M12 x 1.75 x 6.5

PART PRESENT SENSING WORK SUPPORT AIR FLOW





VEKTEK FLUID ADVANCE PART PRESENT SENSING HIGH CAPACITY CARTRIDGE MOUNT WORK SUPPORT CAVITY DIMENSIONS



Dimensions										Installation Torque
Model No.	A	B	C	D	E	F	G	H	J	
Cartridge Mount, High Capacity Fluid Advance Work Support										
41-0706-10-PS	M26 x 1.5	4.3	24.5	13.5	27	5	3.2	2	9.8	50 N-m
41-0706-16-PS	M26 x 1.5	4.3	24.5	13.5	27	5	3.2	2	9.8	50 N-m
41-0708-10-PS	M35 x 1.5	6.6	33.5	21.5	36	5	4.7	3	12	70 N-m
41-0708-16-PS	M35 x 1.5	6.6	33.5	21.5	36	5	4.7	3	12	70 N-m