

ADVANCED AUTOMATION WORKHOLDING PUMP

- **REVOLUTIONARY HMI/Controller** Human / Machine Interface Controls and Displays Pump Status and MORE!
- **M-CODE REDUCTION**
Create Clamping Processes within Vektek's Pump Controller and Reduce the Need for Costly M-Codes!
- **INTEGRATES EASILY** with Machine M-Codes, Robots and Other Controllers!



NEW FULL AUTOMATION PUMPS

Vektek's new line of HMI Pump Control Packages streamline your installation and ongoing operations with simplified one cable ethernet connection.

Added Features

- Vektek's pump control:
Controls pump, valve, and monitoring
- Electronic sequencing by Part Program
- Ethernet RJ45 Connection
- Oil Level/Temperature Switch
- Electronic Clog Indicator Return Line Filter

Options

- Choice of Solenoid Directional Control Valve
- Electronic Pressure Confirmation Switches
- Pressure Reducing Valves to individual circuits
- Accumulator

Options **MUST** be configured to your application. Call us for assistance.



ADVANCED AUTOMATION WORKHOLDING PUMP

As Shown Complete Package Pump with HMI mounted on Power Boss Cart

The new [Advanced Automation Workholding Pump](#) builds upon all the features and benefits you've come to expect from our core pump and adds complete circuit control from pump to fixture / CNC to pump in one complete package.

ADVANCED
AUTOMATION
WORKHOLDING PUMP



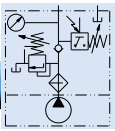
OKUMA THINC-APP WORKHOLDING PUMP

Direct app-based ethernet integration with your [OKUMA](#) machine.

If you're currently using [OKUMA](#) machines, we have a [THINC App](#) equipped version of our [Advanced Workholding Pump](#) which turns your [OKUMA](#) control into the [HMI](#) allowing for easy pump and clamp control with one ethernet cable.

OKUMA

	Pump Flow Rate (cu. in.)		Pump Pressure Range (psi)		Reservoir Capacity (Gallons)		Oil Viscosity cSt 40C Min to Max	Basic Weight (#s) No Valves
	Stage 1	Stage 2	Stage 1	Stage 2	Gross	Usable		
1HP	350	51	0 - 700	700 - 5,000				160
2HP	420	125	0 - 1450	1,450 - 5,000	5.0	3.5	22 to 46	180
2HP LP	250	N/A	0-1500	N/A				175



Power Supplies

Advanced Automation Pump Features and Accessories

Advanced Automation Pump:

- Fully installed Touch Screen on Pump.
- Complete Operator Interactive Control Panel.
- The Vektek Touch Screen Operator Panel controls all aspects of the Vektek Pump settings, including valves and pressure feedback signal to the CNC Machine, Robots, Assembly Stations and/or Test Stands.
- Includes Plug and Play Interface with Ethernet Cable.
- Customers can select from a variety of functions and commands such as:
 - Clamp sequence and confirmation
 - Unclamp sequence and confirmation
 - Confirmation of pneumatic sensing
 - Clamping status
 - Unclamping status
 - Filter status
 - Oil level and temperature status
- Available in:
 - High or Low operating pressure (1500-5000psi or 300-1500psi)
 - Operates either continuously connected or decoupled fixtures
 - Several 3 phase electrical choices in multiple voltages
- Vektek's automation specialists developed the preloaded programming to speed up your decision-making process when needing to control your Precision Hydraulic clamping in any manufacturing process.
- Call Vektek today and talk to an automation specialist about your application.

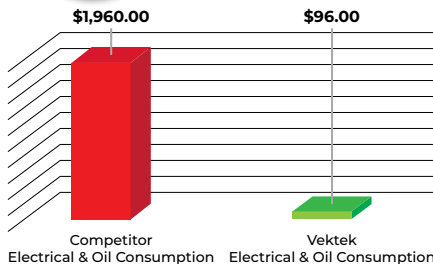
ADVANCED AUTOMATION WORKHOLDING PUMP



95% MORE EFFICIENT

Less Maintenance with More Productivity Time.

Customers save **THOUSANDS** in Operating Cost Yearly!



Don't Let Your Fixture Pump be an Afterthought!

Pump/Machine Tool Interface
Ethernet Cable with HMI Interface
(Power Boss Cart or CNC Machine mounted)

6 Electrical Service Inputs
Available for Worldwide
Power Requirements

Replacement Filter
Order # 31-0500-18

Electronic Pressure Switch

Pressure Reducing Valve

Solenoid Operated Valves
2/3 or 3/4

Accumulator

I/O Station
Basic Interface
included with HMI

*Job Interface optional
**Fixture Interface optional

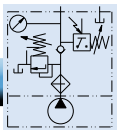
ILS559512 REV A



Manual

*Job Interface - Call Job clamping/unclamping programs during CNC machining process.

**Fixture Interface - Call Fixture clamping/unclamping programs from CNC machine.

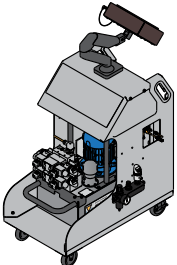
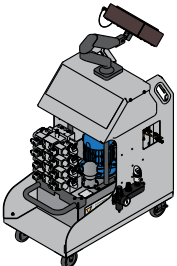


Power Supplies

Example configurations of Advanced Automation Workholding Pumps



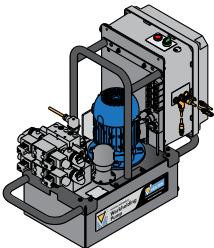
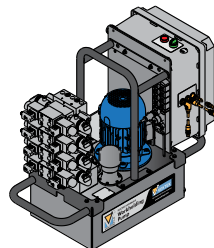
Advanced Automation Workholding Pumps (Custom configuration required)

AAWP Fixture Decoupling Pump		200-240 VAC 3-Phase	380-500 VAC 3-Phase
	Options:	Call Sales Representative for Custom Configuration	
	<ul style="list-style-type: none"> • 1 HP, 2HP, 2 HP Low Pressure • P-Blocked Center Valves for Decoupling Fixtures • Pressure Reduction Valves on all A and B ports • Pressure Switch Confirmation on all A and B ports • Air Sensing Control Kit for Part Confirmation Valves • Power Boss Cart • HMI Mounting Arm for Cart or Machine 		
AAWP Continuously Connected Pump			
	Options:	Call Sales Representative for Custom Configuration	
	<ul style="list-style-type: none"> • 1 HP, 2HP, 2 HP Low Pressure • Closed Center Valves for Continuously Connected Fixtures • Pressure Reduction Valves on all A and B ports • Pressure Switch Confirmation on all A and B ports • Air Sensing Control Kit for Part Confirmation Valves • Power Boss Cart • HMI Mounting Arm for Cart or Machine 		

J-19



Advanced Workholding Pump with OKUMA THINC® App (Custom configuration required)

THINC® App Fixture Decoupling Pump		200-240 VAC 3-Phase	380-500 VAC 3-Phase
	Options:	Call Sales Representative for Custom Configuration	
	<ul style="list-style-type: none"> • 1 HP, 2HP, 2 HP Low Pressure • P-Blocked Center Valves for Decoupling Fixtures • Pressure Reduction Valves on all A and B ports • Pressure Switch Confirmation on all A and B ports • Air Sensing Control Kit for Part Confirmation Valves • Power Boss Cart 		
THINC® App Continuously Connected Models			
	Options:	Call Sales Representative for Custom Configuration	
	<ul style="list-style-type: none"> • 1 HP, 2HP, 2 HP Low Pressure • Closed Center Valves for Continuously Connected Fixtures • Pressure Reduction Valves on all A and B ports • Pressure Switch Confirmation on all A and B ports • Air Sensing Control Kit for Part Confirmation Valves • Power Boss Cart 		

All Automation grade pumps are custom configured to order and for a specific fixture circuit function. Each Automation grade pump is assigned a specific part number for repeatable ordering, service, or replacement. Available in 1, 2 and 2 HP Low Pressure models and alternate voltage of 525-600 VAC on request. Example pumps are preconfigured illustrations which require additional customization for your specific application.