

ADVANCED AUTOMATION WORKHOLDING PUMP

- **REVOLUTIONARY HMI/Controller** Human / Machine Interface Controls and Displays Pump Status and MORE!
- **M-CODE REDUCTION**
Create Clamping Processes within Vektek's Pump Controller and Reduce the Need for Costly M-Codes!
- **INTEGRATES EASILY** with Machine M-Codes, Robots and Other Controllers!



NEW FULL AUTOMATION PUMPS

Vektek's new line of HMI Pump Control Packages streamline your installation and ongoing operations with simplified one cable ethernet connection.

Added Features

- Vektek's pump control:
Controls pump, valve, and monitoring
- Electronic sequencing by Part Program
- Ethernet RJ45 Connection
- Oil Level/Temperature Switch
- Electronic Clog Indicator Return Line Filter

Options

- Choice of Solenoid Directional Control Valve
- Electronic Pressure Confirmation Switches
- Pressure Reducing Valves to individual circuits
- Accumulator

Options **MUST** be configured to your application. Call us for assistance.

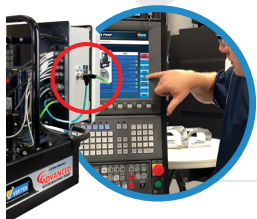


ADVANCED AUTOMATION WORKHOLDING PUMP

As Shown Complete Package Pump with HMI mounted on Power Boss Cart

The new [Advanced Automation Workholding Pump](#) builds upon all the features and benefits you've come to expect from our core pump and adds complete circuit control from pump to fixture / CNC to pump in one complete package.

**ADVANCED
AUTOMATION**
WORKHOLDING PUMP



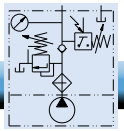
OKUMA THINC-APP WORKHOLDING PUMP

Direct app-based ethernet integration with your [OKUMA](#) machine.

If you're currently using [OKUMA](#) machines, we have a [THINC App](#) equipped version of our [Advanced Workholding Pump](#) which turns your [OKUMA](#) control into the [HMI](#) allowing for easy pump and clamp control with one ethernet cable.

OKUMA

	Pump Flow Rate (cu. in.)		Pump Pressure Range (psi)		Reservoir Capacity (Gallons)		Oil Viscosity cSt 40C Min to Max	Basic Weight (#s) No Valves
	Stage 1	Stage 2	Stage 1	Stage 2	Gross	Usable		
1HP	350	51	0 - 700	700 - 5,000				160
2HP	420	125	0 - 1450	1,450 - 5,000	5.0	3.5	22 to 46	180
2HP LP	250	N/A	0-1500	N/A				175



Okuma THINC® App Pump Features and Accessories

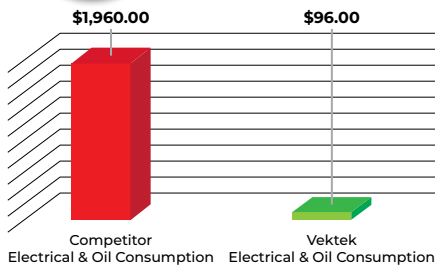
Vektek's THINC App for OKUMA CNC Machines:

- Runs on your Okuma Machine with OSP-200 or OSP-300 HMI controller.
- Clamp & Unclamp desired sequences are displayed on your OKUMA Controller (HMI) and available for configuration within minutes of installation.
- Installation:
 - 1.) Plug the RJ45 Ethernet connection from pump to CNC electrical panel.
 - 2.) Install via a USB the Vektek Thinc app directly to the HMI of the OKUMA CNC. The Vektek Thinc App program is included in your pump package.
 - 3.) With the download completed your OKUMA Control Panel (HMI) becomes your complete interface between pump and machine. The HMI will display all valve functions, pressure switches and other important signals.
 - 4.) Select and Edit the pump functions including:
 - Clamp sequence and confirmation
 - Unclamp sequence and confirmation
 - Confirmation of pneumatic sensing
 - Clamping status
 - Unclamping status
 - Filter status
 - Oil level and temperature status
 - 5.) Run on manual mode, test, and switch to automatic. You are ready to start production!
 - High or Low operating pressure (1500-5000psi or 300-1500psi)
 - Operates either continuously connected or decoupled fixtures
 - Several 3 phase electrical choices in multiple voltages
- Call Vektek today and talk to an automation specialist about your application.



95% MORE EFFICIENT

Less Maintenance with More Productivity Time.
Customers save **THOUSANDS** in Operating Cost Yearly!



Don't Let Your Fixture Pump be an Afterthought!



Manual

Pump/Machine Tool Interface
Ethernet Cable with Okuma THINC® App

6 Electrical Service Inputs
Available for Worldwide
Power Requirements

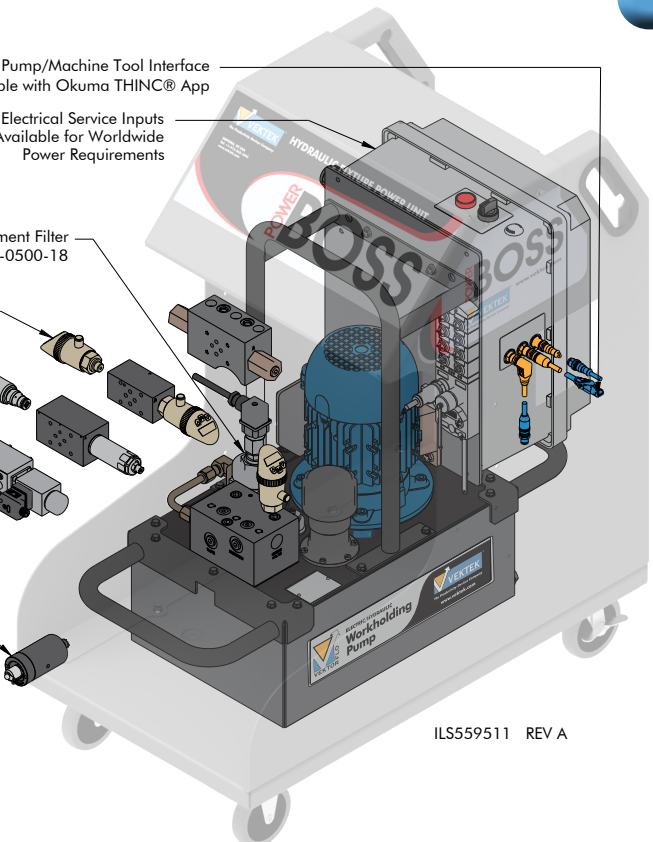
Replacement Filter
Order # 31-0500-18

Electronic Pressure Switch

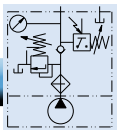
Pressure Reducing Valve

Solenoid Operated Valves
2/3 or 3/4

Accumulator



ILS559511 REV A

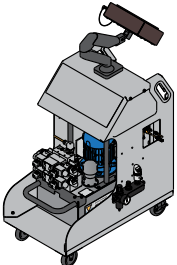
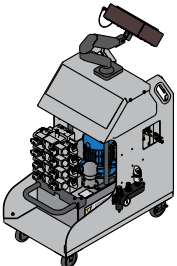


Power Supplies

Example configurations of Advanced Automation Workholding Pumps



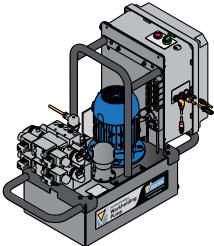
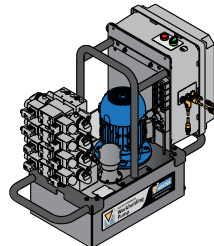
Advanced Automation Workholding Pumps (Custom configuration required)

AAWP Fixture Decoupling Pump		200-240 VAC 3-Phase	380-500 VAC 3-Phase
	Options:	Call Sales Representative for Custom Configuration	
	<ul style="list-style-type: none"> • 1 HP, 2HP, 2 HP Low Pressure • P-Blocked Center Valves for Decoupling Fixtures • Pressure Reduction Valves on all A and B ports • Pressure Switch Confirmation on all A and B ports • Air Sensing Control Kit for Part Confirmation Valves • Power Boss Cart • HMI Mounting Arm for Cart or Machine 		
AAWP Continuously Connected Pump			
	Options:	Call Sales Representative for Custom Configuration	
	<ul style="list-style-type: none"> • 1 HP, 2HP, 2 HP Low Pressure • Closed Center Valves for Continuously Connected Fixtures • Pressure Reduction Valves on all A and B ports • Pressure Switch Confirmation on all A and B ports • Air Sensing Control Kit for Part Confirmation Valves • Power Boss Cart • HMI Mounting Arm for Cart or Machine 		

J-19



Advanced Workholding Pump with OKUMA THINC® App (Custom configuration required)

THINC® App Fixture Decoupling Pump		200-240 VAC 3-Phase	380-500 VAC 3-Phase
	Options:	Call Sales Representative for Custom Configuration	
	<ul style="list-style-type: none"> • 1 HP, 2HP, 2 HP Low Pressure • P-Blocked Center Valves for Decoupling Fixtures • Pressure Reduction Valves on all A and B ports • Pressure Switch Confirmation on all A and B ports • Air Sensing Control Kit for Part Confirmation Valves • Power Boss Cart 		
THINC® App Continuously Connected Models			
	Options:	Call Sales Representative for Custom Configuration	
	<ul style="list-style-type: none"> • 1 HP, 2HP, 2 HP Low Pressure • Closed Center Valves for Continuously Connected Fixtures • Pressure Reduction Valves on all A and B ports • Pressure Switch Confirmation on all A and B ports • Air Sensing Control Kit for Part Confirmation Valves • Power Boss Cart 		

All Automation grade pumps are custom configured to order and for a specific fixture circuit function. Each Automation grade pump is assigned a specific part number for repeatable ordering, service, or replacement. Available in 1, 2 and 2 HP Low Pressure models and alternate voltage of 525-600 VAC on request. Example pumps are preconfigured illustrations which require additional customization for your specific application.