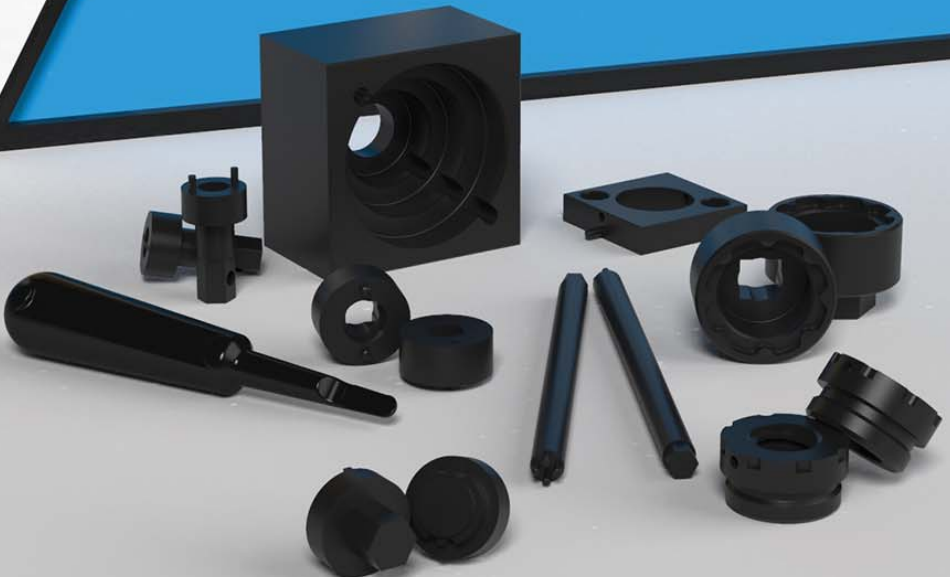


SPECIAL MAINTENANCE & PRODUCTION TOOLS

VEK



VEKTEK LLC

INDEX SPECIAL TOOLS

For Part No. Page

14-0105-01	Page 4	15-0605-00	Page 5	20-0210-04	Page 10	21-1210-01	Page 8
14-0109-01	Page 4	15-0613-11	Page 5	20-0215-00	Page 9	21-1210-02	Page 8
14-0113-01	Page 4	15-0618-00	Page 5	20-0215-00	Page 10	21-1210-04	Page 8
14-0205-01	Page 4	15-1105-01	Page 5	20-0215-01	Page 9	21-1215-01	Page 9
14-0209-01	Page 4	15-1109-01	Page 5	20-0215-01	Page 10	21-1215-02	Page 9
14-0213-01	Page 4	15-1113-01	Page 5	20-0215-02	Page 9	21-1215-04	Page 9
14-1105-01	Page 4	15-1205-01	Page 5	20-0215-02	Page 10	21-1215-05	Page 9
14-1105-01	Page 4	15-1209-01	Page 5	20-0215-04	Page 10	21-1410-04	Page 8
14-1105-01	Page 5	15-1213-01	Page 5	20-0215-04	Page 9	25-1110-11	Page 8
14-1109-01	Page 4	15-2109-01	Page 5	20-0410-00	Page 8	25-1110-12	Page 8
14-1113-01	Page 4	15-2113-01	Page 5	20-0410-02	Page 8	25-1115-11	Page 9
14-1205-01	Page 4	15-2209-01	Page 5	20-0415-02	Page 9	25-1115-12	Page 9
14-1205-01	Page 5	15-2213-01	Page 5	20-1108-00	Page 8	41-4202-11	Page 4
14-1209-01	Page 4	16-6104-00	Page 6	20-1108-01	Page 8	41-4202-11	Page 4
14-1213-01	Page 4	16-6104-00	Page 6	20-1110-00	Page 8	41-4202-12	Page 4
14-2105-01	Page 4	16-6106-00	Page 6	20-1110-01	Page 8	41-4202-12	Page 4
14-2109-01	Page 4	16-6106-00	Page 6	20-1110-02	Page 8	41-4202-21	Page 4
14-2113-01	Page 4	16-6109-00	Page 6	20-1110-04	Page 8	41-4202-21	Page 4
14-2118-02	Page 4	16-6109-00	Page 6	20-1115-00	Page 9	41-4202-22	Page 4
14-2205-01	Page 4	16-6109-00	Page 6	20-1115-02	Page 9	41-4202-22	Page 4
14-2209-01	Page 4	16-6114-00	Page 6	20-1208-00	Page 8	41-4205-11	Page 4
14-2213-01	Page 4	16-6114-00	Page 6	20-1208-01	Page 8	41-4205-12	Page 4
14-2213-10	Page 4	16-6116-00	Page 6	20-1208-02	Page 8	41-4205-21	Page 4
14-2218-02	Page 4	16-6116-00	Page 6	20-1210-00	Page 8	41-4205-22	Page 4
14-6105-01	Page 4	16-6204-00	Page 6	20-1210-01	Page 8	41-4205-23	Page 4
14-6109-01	Page 4	16-6204-00	Page 6	20-1210-02	Page 8	41-4205-24	Page 4
14-6113-01	Page 4	16-6206-00	Page 6	20-1210-04	Page 8	41-4211-11	Page 4
14-6118-02	Page 4	16-6209-00	Page 6	20-1215-00	Page 9	41-4211-12	Page 4
14-6205-01	Page 4	16-6209-00	Page 6	20-1215-02	Page 9	41-4211-21	Page 4
14-6209-01	Page 4	16-6214-00	Page 6	20-1215-04	Page 9	41-4211-22	Page 4
14-6209-10	Page 4	16-6214-00	Page 6	20-1408-00	Page 8	41-4211-23	Page 4
14-6213-01	Page 4	16-6216-00	Page 6	20-1408-01	Page 8	41-4211-24	Page 4
14-6213-10	Page 4	16-6216-00	Page 6	20-1410-01	Page 8	41-4602-11	Page 4
14-6218-02	Page 4	20-0110-00	Page 8	20-1410-02	Page 8	41-4602-11	Page 4
15-0105-00	Page 5	20-0110-00	Page 10	20-1415-00	Page 9	41-4602-12	Page 4
15-0109-08	Page 5	20-0110-01	Page 8	21-0206-00	Page 7	41-4602-12	Page 4
15-0113-11	Page 5	20-0110-01	Page 10	21-0206-01	Page 7	41-4602-21	Page 4
15-0113-12	Page 5	20-0110-02	Page 8	21-0209-00	Page 7	41-4602-21	Page 4
15-0118-00	Page 5	20-0110-02	Page 10	21-0209-01	Page 7	41-4602-22	Page 4
15-0205-00	Page 5	20-0110-04	Page 8	21-0210-00	Page 7	41-4602-22	Page 4
15-0209-08	Page 5	20-0110-04	Page 10	21-0210-01	Page 7	41-4605-11	Page 4
15-0209-10	Page 5	20-0115-00	Page 9	21-0213-00	Page 7	41-4605-12	Page 4
15-0209-12	Page 5	20-0115-00	Page 10	21-0213-01	Page 7	41-4605-21	Page 4
15-0213-20	Page 5	20-0115-01	Page 9	21-0216-00	Page 7	41-4605-22	Page 4
15-0213-22	Page 5	20-0115-01	Page 10	21-0216-01	Page 7	41-4605-23	Page 4
15-0218-00	Page 5	20-0115-02	Page 9	21-0221-00	Page 7	41-4605-24	Page 4
15-0505-00	Page 5	20-0115-02	Page 10	21-1108-00	Page 8	41-4611-11	Page 4
15-0509-08	Page 5	20-0115-04	Page 9	21-1108-01	Page 8	41-4611-12	Page 4
15-0513-11	Page 5	20-0115-04	Page 10	21-1110-00	Page 8	41-4611-21	Page 4
15-0518-00	Page 5	20-0210-00	Page 8	21-1110-01	Page 8	41-4611-22	Page 4
		20-0210-01	Page 8	21-1110-04	Page 8	41-4611-23	Page 4
		20-0210-01	Page 10	21-1115-00	Page 9	41-4611-24	Page 4
		20-0210-02	Page 8	21-1115-01	Page 9	41-5002-11	Page 5
		20-0210-02	Page 10	21-1115-02	Page 9	41-5002-12	Page 5
		20-0210-04	Page 8	21-1208-00	Page 8	41-5002-15	Page 5
				21-1208-01	Page 8	41-5005-11	Page 5
						41-5005-12	Page 5
						41-5005-15	Page 5

CAVITY TOOLS

Page 11

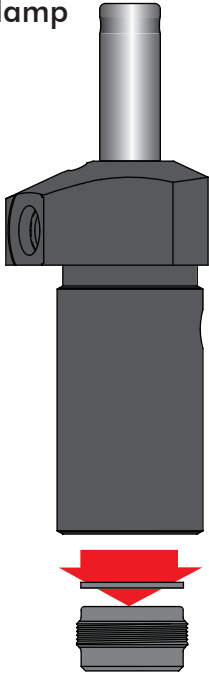
For Part No.

47-0440-00
47-0440-01
47-0540-00
47-0540-04
70-4430-01
70-4430-02
70-5430-06
70-5430-07
70-5430-08
70-5437-70
70-5437-71

41-5005-23	Page 5	41-6611-40	Page 6	42-1120-02	Page 8
41-5005-24	Page 5	41-6611-40	Page 6	42-1120-03	Page 8
41-5005-25	Page 5	41-6611-60	Page 6	42-1120-04	Page 8
41-5005-26	Page 5	41-6611-60	Page 6	42-1120-04	Page 8
41-5011-11	Page 5	41-6620-40	Page 6	42-1120-05	Page 9
41-5011-12	Page 5	41-6620-40	Page 6	42-1120-06	Page 9
41-5011-15	Page 5	41-6620-60	Page 6	42-1120-07	Page 9
41-5011-21	Page 5	41-6620-60	Page 6	42-1120-08	Page 8
41-5011-22	Page 5	41-6620-90	Page 6	42-1120-08	Page 8
41-5011-23	Page 5	41-6620-90	Page 6	42-1120-09	Page 9
41-5011-24	Page 5	41-6621-40	Page 6	42-1621-32	Page 5
41-5011-25	Page 5	41-6621-40	Page 6	42-5010-91	Page 5
41-5011-26	Page 5	41-6621-60	Page 6	42-5011-31	Page 5
41-5022-11	Page 4	41-6621-60	Page 6	42-5018-00	Page 5
41-5022-12	Page 4	42-0010-03	Page 8	42-5020-91	Page 5
41-5022-15	Page 4	42-0010-04	Page 8	42-5021-31	Page 5
41-5022-21	Page 4	42-0010-05	Page 8	42-5028-00	Page 5
41-5022-22	Page 5	42-0010-06	Page 9	42-5111-01	Page 8
41-5022-25	Page 5	42-0010-07	Page 9	42-5111-01	Page 8
41-5202-11	Page 5	42-0020-00	Page 8	42-5111-01	Page 8
41-5202-12	Page 5	42-0020-01	Page 8	42-5111-02	Page 8
41-5202-15	Page 5	42-0020-02	Page 9	42-5111-02	Page 8
41-5205-11	Page 5	42-0020-03	Page 9	42-5111-51	Page 9
41-5205-12	Page 5	42-0110-00	Page 8	42-5111-52	Page 9
41-5205-15	Page 5	42-0110-01	Page 8	45-6007-03	Page 10
41-5205-21	Page 5	42-0110-02	Page 8	45-6101-30	Page 7
41-5205-22	Page 5	42-0110-03	Page 8	45-6101-50	Page 7
41-5205-25	Page 5	42-0110-04	Page 8	45-6102-30	Page 7
41-5211-11	Page 5	42-0110-05	Page 9	45-6102-50	Page 7
41-5211-12	Page 5	42-0110-06	Page 9	56-0004-01	Page 10
41-5211-15	Page 5	42-0110-12	Page 8	56-0004-02	Page 10
41-5211-21	Page 5	42-0110-13	Page 9	56-0005-17	Page 10
41-5211-22	Page 5	42-0110-14	Page 9	56-0005-18	Page 10
41-5211-25	Page 5	42-0120-00	Page 8	56-0005-19	Page 10
41-5602-11	Page 5	42-0120-01	Page 8	56-0005-20	Page 10
41-5602-12	Page 5	42-0120-02	Page 8	56-0005-21	Page 10
41-5602-15	Page 5	42-0120-03	Page 8	56-0005-22	Page 10
41-5605-11	Page 5	42-0120-04	Page 8	56-0005-23	Page 10
41-5605-12	Page 5	42-0120-05	Page 9	56-0005-24	Page 10
41-5605-15	Page 5	42-0120-06	Page 9	56-0005-25	Page 10
41-5605-21	Page 5	42-0120-07	Page 9	56-0005-26	Page 10
41-5605-22	Page 5	42-0120-08	Page 8	56-1013-00	Page 7
41-5605-25	Page 5	42-0120-09	Page 9	56-1015-00	Page 7
41-5611-11	Page 5	42-1110-00	Page 8	56-1023-00	Page 7
41-5611-12	Page 5	42-1110-01	Page 8	56-1025-00	Page 7
41-5611-15	Page 5	42-1110-02	Page 8	62-7011-00	Page 10
41-5611-21	Page 5	42-1110-03	Page 8	65-6000-00	Page 10
41-5611-22	Page 5	42-1110-04	Page 8	70-1017-11	Page 10
41-5611-25	Page 5	42-1110-05	Page 9	70-1017-12	Page 10
41-6610-40	Page 6	42-1110-06	Page 9	70-3311-11	Page 10
41-6610-40	Page 6	42-1110-07	Page 9	70-3311-12	Page 10
41-6610-60	Page 6	42-1110-08	Page 8	93-1072-02	Page 10
41-6610-60	Page 6	42-1110-09	Page 9	93-1072-04	Page 10
41-6610-90	Page 6	42-1120-00	Page 8		
41-6610-90	Page 6	42-1120-01	Page 8		

**SPANNER
ASSEMBLY
TOOL**

For
Swing
Clamp



Tool required to
remove the
RETAINER from
the bottom of
a Swing Clamp



Clamp #	Torque (ft-lb)
---------	-------------------



450 lb. / 2 kN

ORDER NUMBER: AT-1400-50

14-0105-01	13	41-4202-11	13
14-0205-01	13	41-4202-12	13
14-1105-01	13	41-4202-21	13
14-1205-01	13	41-4202-22	13
14-2105-01	13	41-4602-11	13
14-2205-01	13	41-4602-12	13
14-6105-01	13	41-4602-21	13
14-6205-01	13	41-4602-22	13

1100 lb. / 4.9 kN

ORDER NUMBER: AT-1400-90

14-0109-01	30	41-4205-11	30
14-0209-01	30	41-4205-12	30
14-1109-01	13	41-4205-21	30
14-1209-01	13	41-4205-22	30
14-2109-01	30	41-4205-23	30
14-2209-01	30	41-4205-24	30
14-6109-01	30	41-4605-11	30
14-6209-01	30	41-4605-12	30
14-6209-10	30	41-4605-21	30
		41-4605-22	30
		41-4605-23	30
		41-4605-24	30

2600 lb. / 11.6 kN

ORDER NUMBER: AT-1401-30

14-0113-01	30	41-4211-11	30
14-0213-01	30	41-4211-12	30
14-1113-01	13	41-4211-21	30
14-1213-01	13	41-4211-22	30
14-2113-01	30	41-4211-23	30
14-2213-01	30	41-4211-24	30
14-2213-10	30	41-4611-11	13
14-6113-01	13	41-4611-12	13
14-6213-01	13	41-4611-21	13
14-6213-10	13	41-4611-22	13
		41-4611-23	13
		41-4611-24	13

5000 lb. / 22kN

ORDER NUMBER: AT-1501-80

14-2118-02	30	41-5022-11	30
14-2218-02	30	41-5022-12	30
14-6118-02	30	41-5022-15	30
14-6218-02	30	41-5022-21	30

Clamp #	Torque (ft-lb)
---------	-------------------



450 lb. / 2 kN

ORDER NUMBER: AT-1500-50

15-0105-00	13	41-5002-11	13
15-0205-00	13	41-5002-12	13
15-0505-00	13	41-5002-15	13
15-0605-00	13	41-5602-11	13
15-1105-01	13	41-5602-12	13
15-1205-01	13	41-5602-15	13
15-2105-01	13	41-5202-11	13
15-2205-01	13	41-5202-12	13
		41-5202-15	13

1100 lb. / 4.9 kN

ORDER NUMBER: AT-1500-90

15-0109-08	13	41-5005-11	13	41-5205-21	13
15-0209-08	13	41-5005-12	13	41-5205-22	13
15-0209-10	13	41-5005-15	13	41-5205-25	13
15-0209-12	13	41-5005-21	13	41-5605-11	13
15-0509-08	13	41-5005-22	13	41-5605-12	13
15-1109-01	13	41-5005-23	13	41-5605-15	13
15-1209-01	13	41-5005-24	13	41-5605-21	13
15-2109-01	13	41-5005-25	13	41-5605-22	13
15-2209-01	13	41-5005-26	13	41-5605-25	13
		41-5205-11	13	42-5010-91	13
		41-5205-12	13	42-5020-91	13
		41-5205-15	13		

2600 lb. / 11.6 kN

ORDER NUMBER: AT-1501-30

15-0113-11	13	41-5011-11	13	41-5211-21	13
15-0113-12	13	41-5011-12	13	41-5211-22	13
15-0213-20	13	41-5011-15	13	41-5211-25	13
15-0213-22	13	41-5011-21	13	41-5611-11	13
15-0513-11	13	41-5011-22	13	41-5611-12	13
15-0613-11	13	41-5011-23	13	41-5611-15	13
15-1113-01	13	41-5011-24	13	41-5611-21	13
15-1213-01	13	41-5011-25	13	41-5611-22	13
15-2113-01	13	41-5011-26	13	41-5611-25	13
15-2213-01	13	41-5211-11	13	42-1621-32	13
		41-5211-12	13	42-5011-31	13
		41-5211-15	13	42-5021-31	13

5000 lb. / 22kN

ORDER NUMBER: AT-1501-80

15-0118-00	30	41-5022-22	30
15-0218-00	30	41-5022-25	30
15-0518-00	30	42-5018-00	30
15-0618-00	30	42-5028-00	30

SPANNER ASSEMBLY TOOL

For Link Clamp
Retainer

ORDER NUMBER: AT-1600-40

350 lb. & 450 lb. / 1.5 kN & 2 kN

Retainer Torque (in-lb) 50

16-6104-00 41-6610-40

16-6204-00 41-6620-40

ORDER NUMBER: AT-1600-60

700 lb. & 1100 lb. / 3 kN & 5 kN

Retainer Torque (in-lb) 50

16-6106-00 41-6610-60

16-6206-00 41-6620-60

ORDER NUMBER: AT-1600-90

1300 lb. & 2600 lb. / 6 kN & 11 kN

Retainer Torque (in-lb) 50

16-6109-00 41-6610-90

16-6209-00 41-6620-90

ORDER NUMBER: AT-1601-40

3000 lb. & 5000 lb. / 13 kN & 22 kN

Retainer Torque (in-lb) 50

16-6114-00 41-6611-40

16-6214-00 41-6621-40

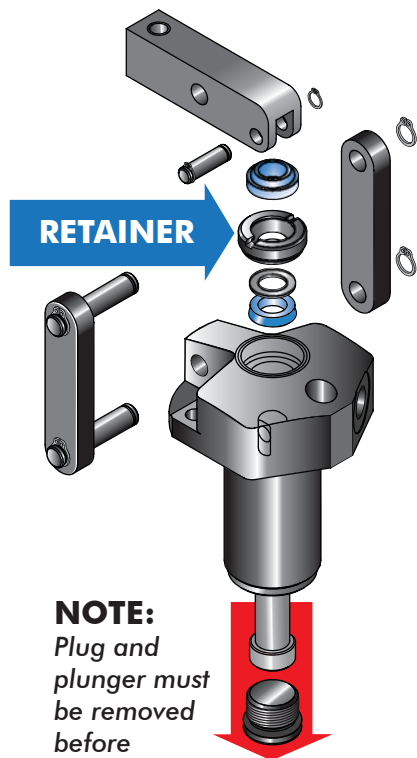
ORDER NUMBER: AT-1601-60

5000 lb. & 6800 lb. / 22 kN & 30 kN

Retainer Torque (in-lb) 30

16-6116-00 41-6611-60

16-6216-00 41-6621-60



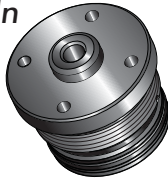
**SEAL INSTALLATION TOOL
FOR LINK CLAMP, WORK SUPPORT,
SWING CLAMP AND CYLINDERS**

ORDER NUMBER: AT-6510-00



SPANNER

To Remove Thread-In
Cartridge Mount
Push/Pull Cylinder
From Fixture



ORDER NUMBER: AT-2107-01
**1500 lb CARTRIDGE MOUNT
PUSH/PULL CYLINDER**

Torque (ft-lb): 25
21-0206-00
21-0206-01

ORDER NUMBER: AT-2107-05
**2900 lb & 3900 lb CARTRIDGE
MOUNT PUSH/PULL CYLINDER**

Torque (ft-lb): 35 Torque (ft-lb): 60
21-0209-00 21-0210-00
21-0209-01 21-0210-01

ORDER NUMBER: AT-2107-02
**7400 lb CARTRIDGE MOUNT
PUSH/PULL CYLINDER**

Torque (ft-lb): 65
21-0213-00
21-0213-01

ORDER NUMBER: AT-2107-03
**12,000 lb CARTRIDGE MOUNT
PUSH/PULL CYLINDER**

Torque (ft-lb): 160
21-0216-00
21-0216-01

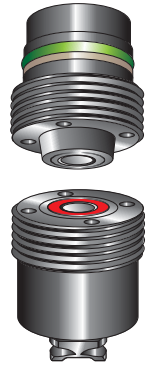
ORDER NUMBER: AT-2107-04
**22,000 lb CARTRIDGE MOUNT
PUSH/PULL CYLINDER**

Torque (ft-lb): 200
21-0221-00



SPANNER AND SEAL ASSEMBLY TOOL

For
Thread-In
Coupling
Elements



SPANNER TOOL: AT-5613-00
SEAL TOOL: AT-5603-00

THREAD-IN COUPLING ELEMENTS

56-1013-00 45-6101-30
56-1023-00 45-6102-30

SPANNER TOOL: AT-5615-00
SEAL TOOL: AT-5605-00

THREAD-IN COUPLING ELEMENTS

56-1015-00 45-6101-50
56-1025-00 45-6102-50



SPANNER TOOL



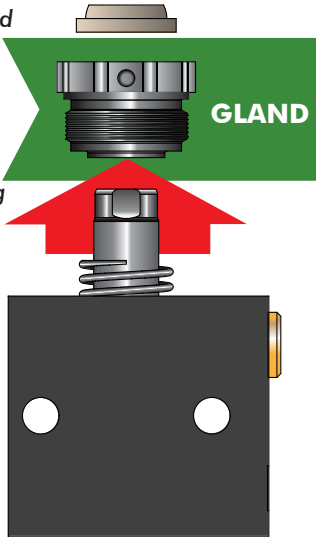
SEAL TOOL

SPANNER ASSEMBLY TOOL

For Cylinder Gland

NOTE:

Cylinder gland can be damaged when removed. Vekttek suggests replacing the gland with the new revision when rebuilding all cylinders.



**NEW STYLE
GLAND**



**ORIGINAL
STYLE GLAND**

NEW STYLE GLAND SPANNER

ORDER NUMBER: AT-2000-81

GLAND NUMBER: 82-0308-02

ORIGINAL STYLE GLAND SPANNER

ORDER NUMBER: AT-2000-80

Single Acting • Torque (in-lb) 55

20-1108-00	42-0110-00
20-1108-01	42-0110-01
20-1208-00	42-0120-00
20-1208-01	42-0120-01
20-1208-02	42-1110-00
20-1408-00	42-1110-01
20-1408-01	42-1120-00
21-1108-00	42-1120-01
21-1108-01	
21-1208-00	
21-1208-01	

NEW STYLE GLAND SPANNER

ORDER NUMBER: AT-2001-02

GLAND NUMBER: 82-0310-01

ORIGINAL STYLE GLAND SPANNER

ORDER NUMBER: AT-2001-00

3900 lb / 17.8 kN

Single Acting • Torque (in-lb) 55

20-0110-00	42-0010-03
20-0110-01	42-0010-04
20-0110-02	42-0010-05
20-0110-04	

NEW STYLE GLAND SPANNER

ORDER NUMBER: AT-2001-03

GLAND NUMBER: 82-0310-02

ORIGINAL STYLE GLAND SPANNER

ORDER NUMBER: AT-2001-51

3900 lb / 17.8 kN

Double Acting • Torque (in-lb) 55

20-0210-00	42-0020-00
20-0210-01	42-0020-01
20-0210-02	42-0110-02
20-0210-04	42-0110-03
20-0410-00	42-0110-04
20-0410-02	42-0110-12
20-1110-00	42-0120-02
20-1110-01	42-0120-03
20-1110-02	42-0120-04
20-1110-04	42-0120-08
20-1210-00	42-1110-02
20-1210-01	42-1110-03
20-1210-02	42-1110-04
20-1210-04	42-1110-08
20-1410-01	42-1120-02
20-1410-02	42-1120-03
21-1110-00	42-1120-04
21-1110-01	42-1120-08
21-1110-04	42-5111-01
21-1210-01	42-5111-01
21-1210-02	42-5111-02
21-1210-04	42-1120-04
21-1410-04	42-1120-08
25-1110-11	42-5111-01
25-1110-12	42-5111-02

NEW STYLE GLAND SPANNER

ORDER NUMBER: AT-2001-51
GLAND NUMBER: 82-0315-01

ORIGINAL STYLE GLAND SPANNER
ORDER NUMBER: AT-2001-50

8800 lb / 39.9 kN

Threaded Body / Block Body

Double Acting • Torque (in-lb) 55

- 20-0115-00 42-0010-06
- 20-0115-01 42-0010-07
- 20-0115-02 42-0020-02
- 20-0115-04 42-0020-03
- 20-0215-00 42-0110-05
- 20-0215-01 42-0110-06
- 20-0215-02 42-0110-13
- 20-0215-04 42-0110-14
- 20-0415-02 42-0120-05
- 20-1115-00 42-0120-06
- 20-1115-02 42-0120-07
- 20-1215-00 42-0120-09
- 20-1215-02 42-1110-05
- 20-1215-04 42-1110-06
- 20-1415-00 42-1110-07
- 21-1115-00 42-1110-09
- 21-1115-01 42-1120-05
- 21-1115-02 42-1120-06
- 21-1215-01 42-1120-07
- 21-1215-02 42-1120-09
- 21-1215-04
- 21-1215-05

NEW STYLE GLAND SPANNER

ORDER NUMBER: AT-2501-00
GLAND NUMBER: 82-0315-01

ORIGINAL STYLE GLAND SPANNER
ORDER NUMBER: AT-2001-00

1300 lb / 5.9 kN

PUSH/PULL CYLINDER

Torque (ft-lb) 55

- 25-1110-11 42-5111-01
- 25-1110-12 42-5111-02

NEW STYLE GLAND SPANNER

ORDER NUMBER: AT-2501-50
GLAND NUMBER: 82-0315-01

ORIGINAL STYLE GLAND SPANNER
ORDER NUMBER: AT-2001-50

3800 lb / 17.5 kN

PUSH/PULL CYLINDER

Torque (ft-lb) 55

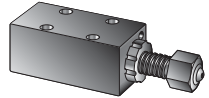
- 25-1115-11 42-5111-51
- 25-1115-12 42-5111-52

ORDER NUMBER: AT-2501-00
GLAND NUMBER: 85-5310-00

SCREW PUMP
Block Body

Torque (ft-lb) 55

- 55-8190-00 45-5890-00

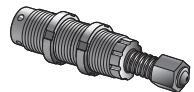


ORDER NUMBER: AT-5508-80
GLAND NUMBER: 85-5310-01

SCREW PUMP
Threaded Body

Torque (ft-lb) 55

- 55-8190-01 45-5890-01



SPANNER for Original Style Gland

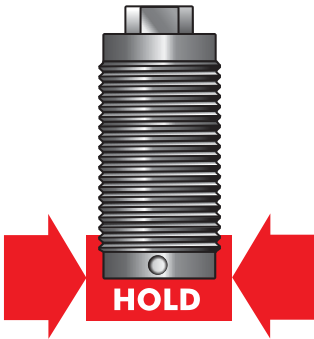


SPANNER for New Style Gland



ASSEMBLY TOOL

To Hold Cylinder at Base



ORDER NUMBER: **AT-2070-00**

3900 lb & 8800 lb

Cylinder

Single and Double Acting

Threaded Body

Torque (ft-lb) 55

- 20-0110-00
- 20-0110-01
- 20-0110-04
- 20-0110-02
- 20-0115-00
- 20-0115-01
- 20-0115-04
- 20-0115-02
- 20-0210-00
- 20-0210-01
- 20-0210-04
- 20-0210-02
- 20-0215-00
- 20-0215-01
- 20-0215-04
- 20-0215-02



10

ASSEMBLY TOOL

To Insert Check Valve

#70-3437-92

ORDER NUMBER: **65-6000-00**

CHECK VALVE

NUMBER: 70-3437-92

Torque (in-lb): 25

- 56-0004-01 45-6007-03
- 56-0004-02
- 56-0005-17
- 56-0005-18
- 56-0005-19
- 56-0005-20
- 56-0005-21
- 56-0005-22
- 56-0005-23
- 56-0005-24
- 56-0005-25
- 56-0005-26
- 62-7011-00
- 65-6000-00
- 70-1017-11
- 70-1017-12
- 70-3311-11
- 70-3311-12
- 93-1072-02
- 93-1072-04



CAVITY TOOLS

SEQUENCE VALVE CARTRIDGE CAVITY TOOL KIT

ORDER NUMBER: 62-7040-00

KIT DESCRIPTION

MULTI-STEP CARBIDE CAVITY
CONTOUR TOOL WITH
REAMER AND M20 X 1.5 TAP

ORDER NUMBER: 65-3002-02

CARBIDE CAVITY CONTOUR
TOOL ONLY

70-4430-01 47-0440-00
70-4430-02 47-0440-01

PRESSURE REDUCING AND PRESSURE LIMITING CARTRIDGE CAVITY TOOL

ORDER NUMBER: 62-7050-00

TOOL DESCRIPTION
MULTI-STEP CARBIDE CAVITY
CONTOUR TOOL

PRV

70-5437-70 47-0540-00
70-5437-71 47-0540-04

PLV

70-5430-06
70-5430-07
70-5430-08

PILOT OPERATED CHECK VALVE CARTRIDGE CAVITY TOOLS

TOOL DESCRIPTION

ORDER NUMBER: 65-3300-02

T-11A CAVITY FORM DRILL

ORDER NUMBER: 65-3300-03

T-11A CAVITY FORM REAMER

ORDER NUMBER: 65-3002-01

M20 X 1.5 (METRIC) STRAIGHT
FLUTE, BOTTOMING TAP



The Productivity Devices Company

TO ORDER -

800-992-0236

FAX: 816-364-0471

sales@vektek.com

INTERNATIONAL

+1-913-365-1045

FAX: +1-816-364-0471

internationalsales@vektek.com

QUESTIONS -

customersupport@vektek.com



VEKTEK LLC



The Productivity Devices Company

1334 E 6th Avenue
Emporia, KS 66801 USA

www.vektek.com

TO ORDER -

800-992-0236

FAX: 816-364-0471

sales@vektek.com

INTERNATIONAL

+1-913-365-1045

FAX: +1-816-364-0471

internationalsales@vektek.com

QUESTIONS -

customersupport@vektek.com



Brasil - brasilsales@vektek.com
+55-11-4398-7300

Canada - canadasales@vektek.com
905-238-3267

China - chinasales@vektek.com
Shanghai: +86-21-58683679
Dalian: +0411-87566805

Europe - internationalsales@vektek.com

Israel - israelsales@vektek.com

India - indiasales@vektek.com
+91-40-27844279

Japan - japansales@vektek.com
+048-987-1371

Korea - koreasales@vektek.com
+82-2-26315755

Mexico - mexicosales@vektek.com
+52-(81) 2032-9910