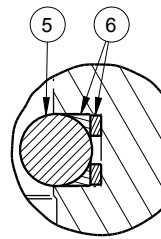
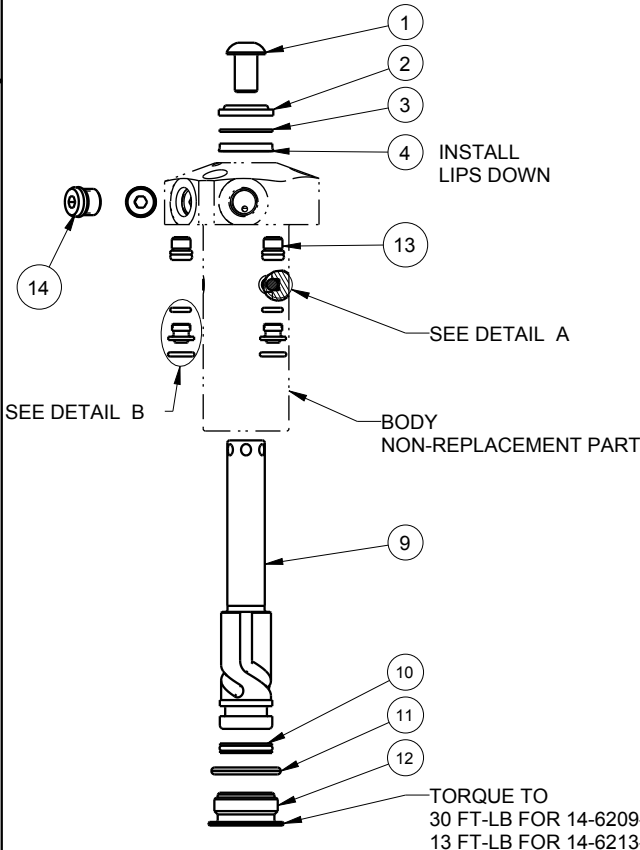
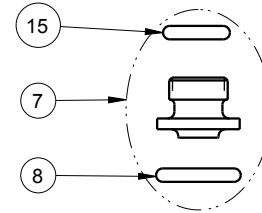


NO.	QTY.	DESCRIPTION	MODEL NO.		STANDARD SEAL KIT	FLUOROCARBON SEAL KIT
			14-6209-10-X	14-6213-10-X		
1	1	BUTTON HEAD CAP SCREW	21-4100-09	21-4100-39	NO	NO
2	1	WIPER, ROD (FLUOROCARBON)	39-0530-01	39-0530-00	YES	YES
3	1	BACK-UP RING, ROD	39-F540-01	39-F540-02	YES	YES
4	1	SEAL, ROD (STANDARD)	39-0100-20	39-0110-46	YES	NO
	1	SEAL, ROD (FLUOROCARBON)	39-V100-20	39-V110-46	NO	YES
5	3	BALL, TUNGSTEN CARBIDE	23-6500-03	23-6500-04	YES	YES
6	3	BALL SEAT ASSEMBLY	90-1999-57	90-1999-58	YES	YES
7	2	MANIFOLD MOUNT ADAPTOR	30-8711-20	30-8711-20	YES	NO
	2	MANIFOLD MOUNT ADAPTOR (FLUOROCARBON)	30-8711-20F	30-8711-20F	NO	YES
8	2	O-RING, MANIFOLD (STANDARD)	39-0500-42	39-0500-42	YES*	NO
	2	O-RING, MANIFOLD (FLUOROCARBON)	39-0510-25	39-0510-25	NO	YES*
9	1	PLUNGER, LEFT HAND (SHOWN)	81-4000-68	81-4000-70	NO	NO
	1	PLUNGER, RIGHT HAND	81-4000-69	81-4000-71	NO	NO
	1	PLUNGER, STRAIGHT	81-4000-76	81-4000-77	NO	NO
10	1	SEAL, PLUNGER (STANDARD)	39-H100-18	39-H110-30	YES	NO
	1	SEAL, PLUNGER (FLUOROCARBON)	39-V100-18	39-V110-30	NO	YES
11	1	O-RING, RETAINER (FLUOROCARBON)	39-0510-31	N/A	YES	YES
	1	GASKET	N/A	39-T550-03	YES	YES
12	1	RETAINER	81-4000-29	81-4000-30	NO	NO
13	2	PLUG, SOCH, SAE 2	30-6011-22	30-6011-22	NO	NO
14	2	PLUG, SOCH, SAE 4	30-6011-44	30-6011-44	NO	NO
15	2	O-RING, ADAPTOR (STANDARD)	39-0500-36	39-0500-36	YES*	NO
	2	O-RING, ADAPTOR (FLUOROCARBON)	39-0510-24	39-0510-24	NO	YES*
N/A	N/A	SEAL KIT (STANDARD)	60-1400-08	60-1400-10	INCLUDED IN KIT	
N/A	N/A	SEAL KIT (FLUOROCARBON)	6V-1400-08	6V-1400-10		



DETAIL A  
SCALE 2.000



DETAIL B  
SCALE 1.000

\*NOTE: ITEMS INCLUDED IN NO.7



Lubricate all seals with clean hydraulic fluid prior to assembly.

**PARTS LIST**



VEKTEK, INC.  
1334 E. SIXTH AVE. P.O. BOX 625  
EMPORIA, KS. 66801 U.S.A.

ASSEMBLIES AFFECTED  
14-6209-10-L, 14-6209-10-R, 14-6209-10-S  
14-6213-10-L, 14-6213-10-R, 14-6213-10-S

PARTS LIST, SC, HS, TF, LS, DA

E	3414	RELEASE	JDW	02/05/18
REV	IN ACCORDANCE WITH ECN	EFFECTIVE DATE	REVISED BY	DATE
DRW BY:	DRAWING STATUS: <b>Released</b>			
DATE:	PRODUCTION APPROVED FOR RELEASED STATUS ONLY			

SIZE  
A **PL1428**

REV  
E

SHEET 1 OF 1

FORM FEG035\_PL\_ASIZE, REV. B