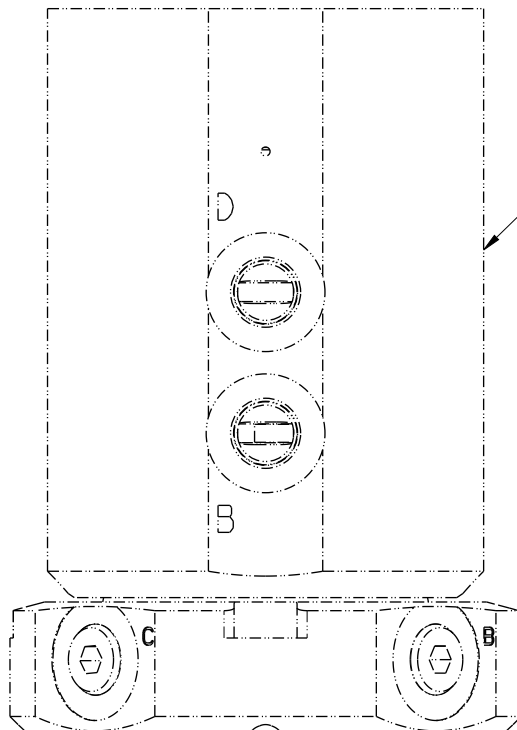


1

2

B

B




NOT FIELD SERVICEABLE.
 These Rotary Unions can
 be factory refurbished
 at any authorized
 Vekttek repair facility.



A

A

No.	QTY	PART No.	DESCRIPTION
1	4	39000050	O-RING, (-204)

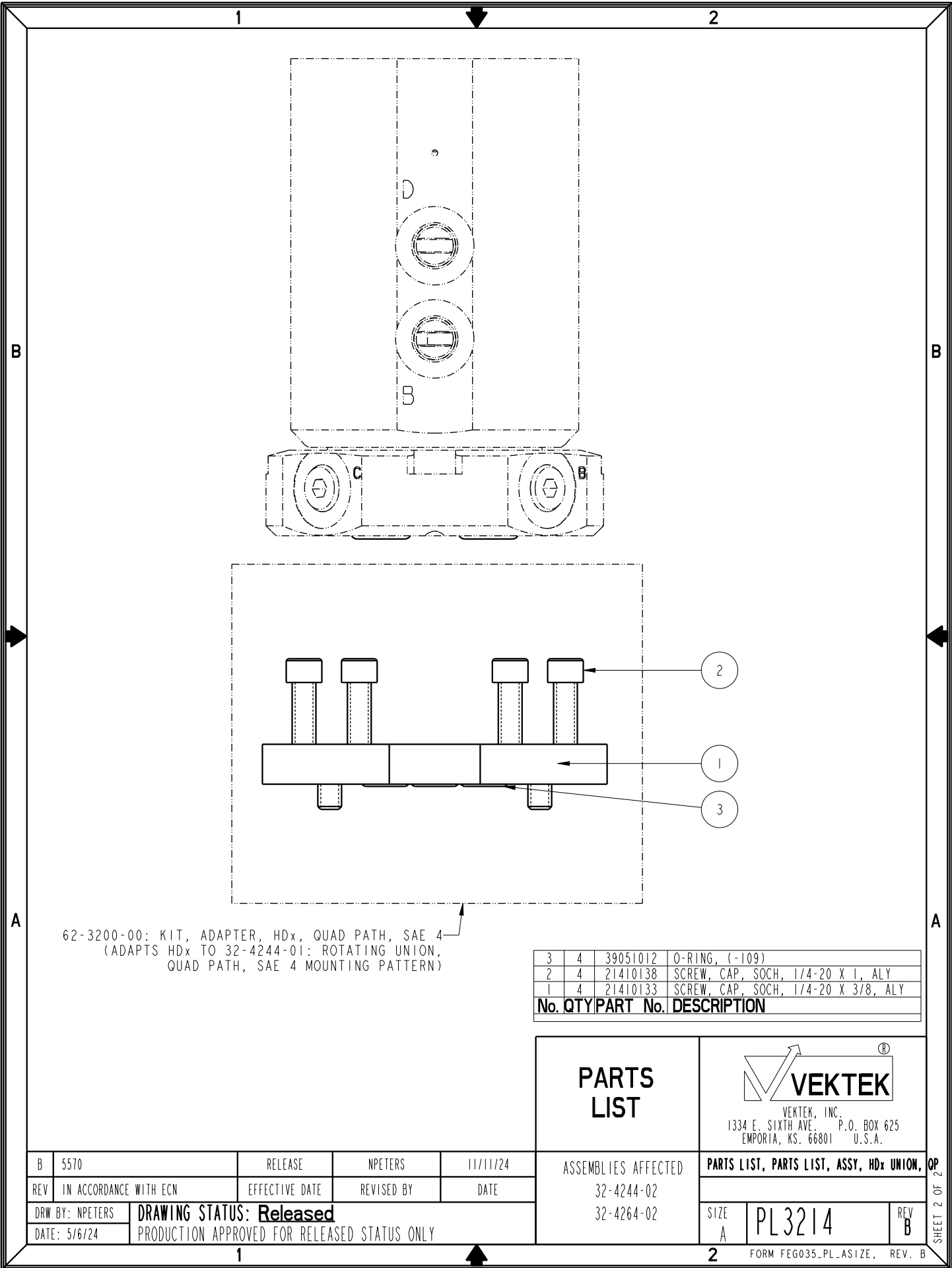
PARTS LIST	 VEKTEK <small>VEKTEK, INC. 1334 E. SIXTH AVE. P.O. BOX 625 EMPORIA, KS. 66801 U.S.A.</small>						
	PARTS LIST, ASSY, HDx UNION, OP <table border="1" style="width: 100%;"> <tr> <td style="width: 30%;">ASSEMBLIES AFFECTED</td> <td style="width: 70%;">REV B</td> </tr> <tr> <td>32-4244-02</td> <td rowspan="2">PL3214</td> </tr> <tr> <td>32-4264-02</td> </tr> <tr> <td>SIZE A</td> <td>FORM FEG035_PL_ASIZE, REV. B</td> </tr> </table>	ASSEMBLIES AFFECTED	REV B	32-4244-02	PL3214	32-4264-02	SIZE A
ASSEMBLIES AFFECTED	REV B						
32-4244-02	PL3214						
32-4264-02							
SIZE A	FORM FEG035_PL_ASIZE, REV. B						

B	5570	RELEASE	NPETERS	11/11/24
REV	IN ACCORDANCE WITH ECN	EFFECTIVE DATE	REVISED BY	DATE
DRW BY:	NPETERS	DRAWING STATUS: Released		
DATE:	5/6/24	PRODUCTION APPROVED FOR RELEASED STATUS ONLY		

1


2

SHEET 1 OF 2



62-3200-00: KIT, ADAPTER, HDx, QUAD PATH, SAE 4
 (ADAPTS HDx TO 32-4244-01: ROTATING UNION,
 QUAD PATH, SAE 4 MOUNTING PATTERN)

3	4	39051012	O-RING, (-109)
2	4	21410138	SCREW, CAP, SOCH, 1/4-20 X 1, ALY
1	4	21410133	SCREW, CAP, SOCH, 1/4-20 X 3/8, ALY
No.		QTY	PART No. DESCRIPTION

PARTS LIST	 VEKTEK VEKTEK, INC. 1334 E. SIXTH AVE. P.O. BOX 625 EMPORIA, KS. 66801 U.S.A.	
	ASSEMBLIES AFFECTED	PARTS LIST, PARTS LIST, ASSY, HDx UNION, OP
32-4244-02	32-4264-02	SIZE A
		PL3214
		REV B

B	5570	RELEASE	NPETERS	11/11/24
REV	IN ACCORDANCE WITH ECN	EFFECTIVE DATE	REVISED BY	DATE
DRW BY:	NPETERS	DRAWING STATUS: Released		
DATE:	5/6/24	PRODUCTION APPROVED FOR RELEASED STATUS ONLY		

SHEET 2 OF 2