



VEKTEK, INC.
 1334 E. SIXTH AVE.
 P.O. BOX 625
 EMPORIA, KS. 66801
 U.S.A.

INSTALLATION INSTRUCTIONS

IS3100
 REV. C ECN 1557
 PAGE 1 OF 1

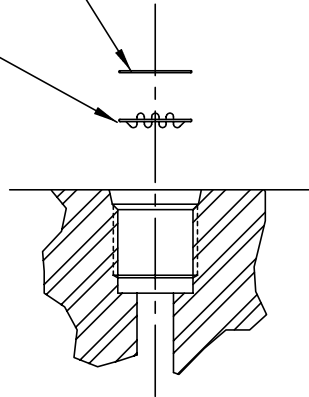
INSTALLATION OF FILTER
 SCREENS INTO SAE PORTS

DRAWN/DATE JACOB
 061295

SAE 4 O-RING PORT

RETAINING RING
 23-0020-15

FILTER DISK
 31-0500-00

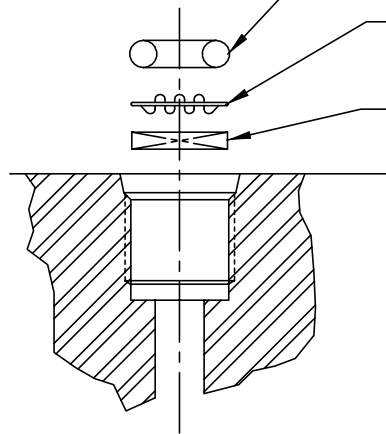


SAE 6 O-RING PORT

O-RING
 39-V000-68

FILTER DISK
 31-0500-01

SPRING
 23-3550-04



INSTALLATION INSTRUCTIONS:

FOR SAE 4 PORT:

1. PRESS FILTER DISK INTO BOTTOM OF PORT.
2. COMPRESS RETAINER RING, AND PLACE INTO LAST THREAD OF PORT, TO CAPTURE FILTER DISK.

FOR SAE 6 PORT:

1. INSERT SPRING INTO PORT.
2. INSERT FILTER DISK INTO PORT.
3. INSERT O-RING INTO PORT TO RETAIN FILTER DISK.

CAUTION:

DO NOT INSTALL FILTER DISK INTO PORTS WITH OTHER THAN FLAT BOTTOM INLINE SUPPLY PASSAGES.

