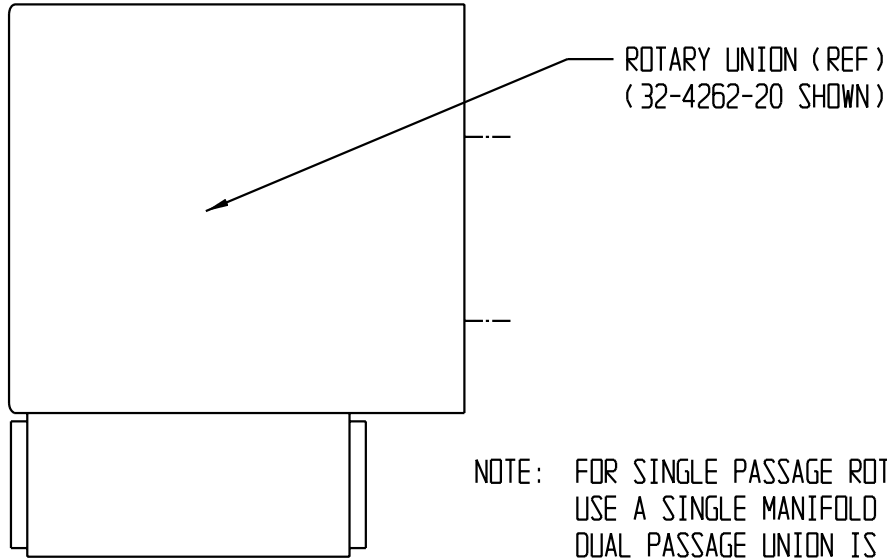




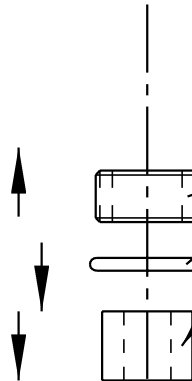
VEKTEK, INC.
 1334 E. SIXTH AVE.
 P.O. BOX 625
 EMPORIA, KS. 66801
 U.S.A.

INSTALLATION INSTRUCTIONS

MANIFOLD MOUNTING
 OF ROTATING UNION ROTORS



NOTE: FOR SINGLE PASSAGE ROTARY UNION, USE A SINGLE MANIFOLD KIT. IF A DUAL PASSAGE UNION IS USED, TWO KITS WITH TWO PORTS ARE NEEDED FOR MOUNTING HOLE LOCATIONS, SEE CATALOG DESCRIPTION.



COMPONENTS FROM 62-3000-06 MANIFOLD MOUNTING KIT
 (ASSEMBLE PER INSTRUCTIONS BELOW)

1. THREAD SET SCREW INTO ROTOR PORT FOR DEPTH TO GIVE 3/16" DEEP POCKET
2. PRESS SUPPORT INTO CAVITY COUNTERBORE
3. SILICONE GREASE O-RING AND STRETCH OVER SUPPORT

