



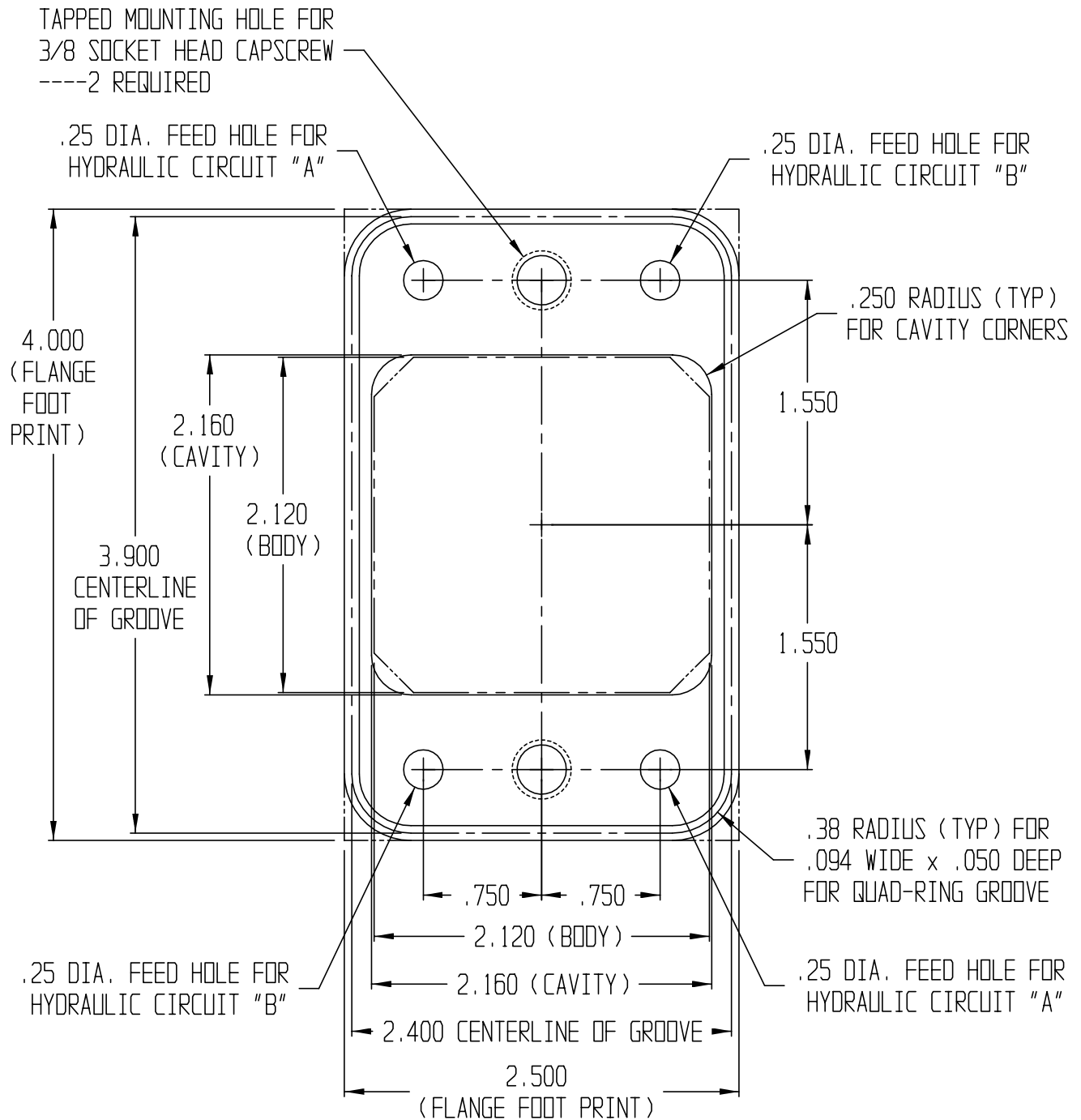
VEKTEK, INC.
 1334 E. SIXTH AVE.
 P.O. BOX 625
 EMPORIA, KS. 66801
 U.S.A.

INSTALLATION INSTRUCTIONS

IS3201
 REV. D, ECN1492
 PAGE 1 OF 1

MOUNTING INSTRUCTIONS FOR
 32-4264-80 ROTARY UNION

DRAWN/DATE
 VANDALSEM
 10/28/94



3. FEATURES OF ROTARY UNION ARE SYMMETRICAL; THEREFORE, MAKE CAVITY ON CENTER WITHIN .010
 2. SURFACE WITHIN .25 OF OF FEED HOLES NOT TO HAVE ANY MARKS RADIATING FROM HOLE CENTER.
 NOTE: 1. MOUNTING SURFACE OF (2.500 x 4.000) FLANGE FOOT PRINT TO BE FLAT WITHIN .005

| LINE SCHEDULE | | TOL. UNLESS NOTED |
|---------------|--------------------------------------------------------|-------------------|
| ————— | = PROFILE OF MOUNTING HOLES, GROOVES, & CLEARANCE HOLE | XX = ±.03 |
| ----- | = CENTERLINE OF HOLES IN LINE & CENTERLINE OF GROOVE | XXX = ±.010 |
| ----- | = PROFILE OF FLANGE MEMBER OF ROTARY UNION | FINISH = 64/ |